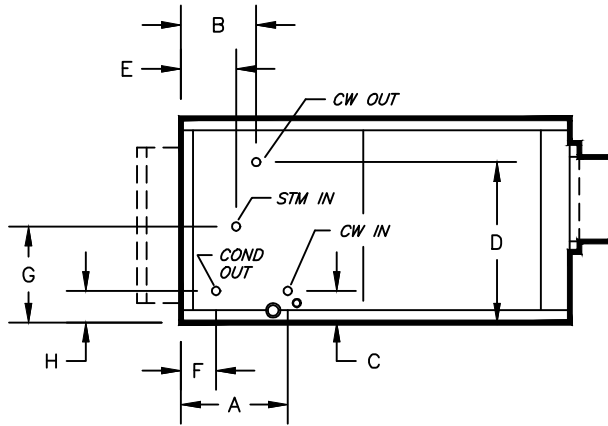


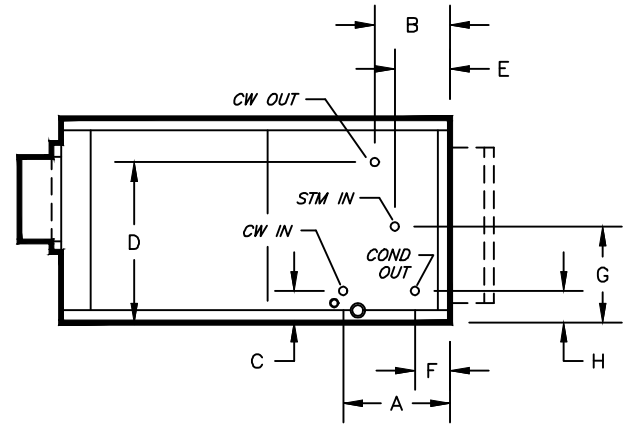
# KBH, KBV - HORIZONTAL & VERTICAL BLOWER COIL

COIL CONNECTION LOCATION - 3 ROW WATER COIL IN COOLING WITH 1 OR 2 ROW STEAM, PRE-HEAT

## SUBMITTAL SHEET

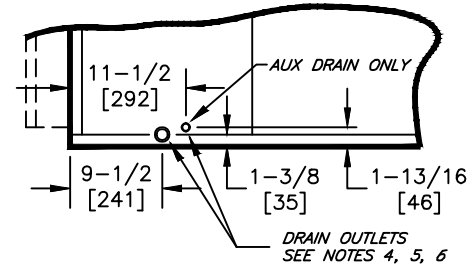


**RIGHT HAND**



**LEFT HAND**

STANDARD CIRCULATION					
SIZE	COIL CONNECTION	A	B	C	D
08	7/8 [23]	12-1/8 [308]	9-7/8 [251]	4-1/8 [105]	15-3/4 [401]
12					
16					
20	1-1/8 [29]				18-3/8 [467]
30					20-7/8 [531]
40	1-3/8 [35]				23-3/8 [594]



**TYPICAL DRAIN LOCATIONS**

"LO GPM" CIRCULATION					
SIZE	COIL CONNECTION	A	B	C	D
08	5/8 [16]				15-3/4 [401]
12					
16	7/8 [23]	12-1/8 [308]	9-7/8 [251]	4-1/8 [105]	18-3/8 [467]
20					20-7/8 [531]
30	1-1/8 [29]				23-3/8 [594]
40					

"HIGH GPM" CIRCULATION					
SIZE	COIL CONNECTION	A	B	C	D
08	7/8 [23]				15-3/4 [401]
12					
16	1-1/8 [29]	12-1/8 [308]	9-7/8 [251]	4-1/8 [105]	18-3/8 [467]
20					20-5/8 [524]
30	1-3/8 [35]				23-1/8 [588]
40					

### NOTES:

- ALL DIMENSIONS ARE INCHES [MM]
- ALL DIMENSIONS ARE  $\pm 1/2"$  [13]
- METRIC VALUES ARE SOFT CONVERSION
- STANDARD GALVANIZED IAQ DRAIN PAN HAS 1-1/8" ODM COPPER CONNECTION ON ONE SIDE. STAINLESS STEEL IAQ DRAIN PAN HAS 1" GALVANIZED SCH. 40 THREADED STEEL CONNECTION ON ONE SIDE ONLY. OPTIONAL AUX CONNECTION IS 3/8" GALVANIZED SCH. 40 THREADED STEEL ON SAME SIDE AS COIL HAND.
- OPTIONAL FLAT GALVANIZED DRAIN PAN HAS 1-1/8" ODM COPPER CONNECTION. OPTIONAL AUX CONNECTION IS 5/8" ODM COPPER. STANDARD AND AUX CONNECTIONS ARE ON BOTH SIDES. CAP UNUSED CONNECTIONS.
- HEATING-ONLY UNITS MAY NOT INCLUDE A DRAIN PAN UNDER HEATING COIL. SEE ACTUAL ORDER DOCUMENTS.
- HORIZONTAL UNIT SHOWN. COIL CONNECTION LOCATIONS ARE TYPICAL FOR VERTICAL UNITS RELATIVE TO LOWER BOTTOM CORNER AT ENTERING AIR SIDE
- ALL CONNECTIONS ARE ODM COPPER SWEAT UNLESS OTHER NOTED
- FIELD PIPING SHOULD BE BASED ON JOB REQUIREMENTS, NOT UNIT CONNECTION SIZE

Revision Date: 12/14

Form: BCS11-WC22

Replaces: NEW