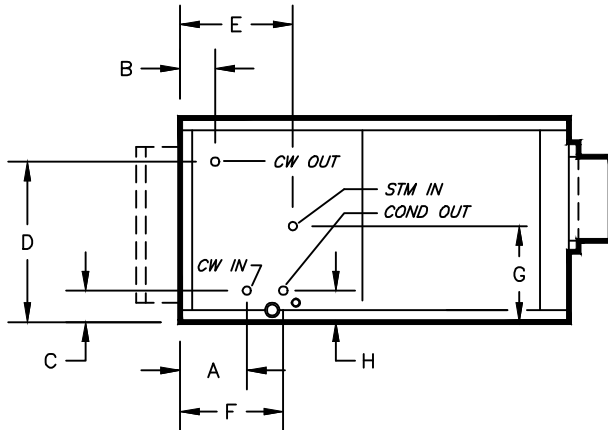


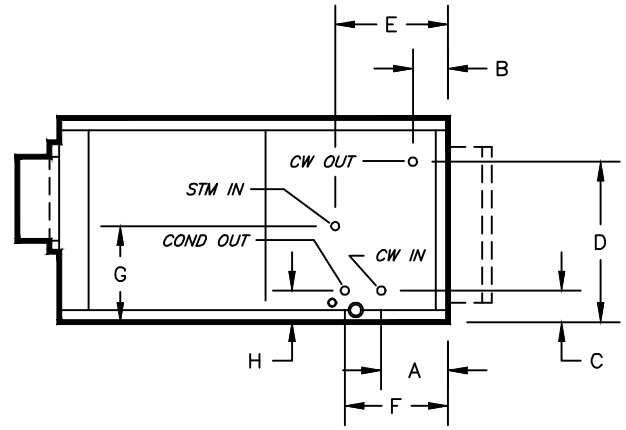
KBH, KBV - HORIZONTAL & VERTICAL BLOWER COIL

COIL CONNECTION LOCATION - 6 ROW WATER COIL IN COOLING WITH STEAM RE-HEAT COIL

SUBMITTAL SHEET

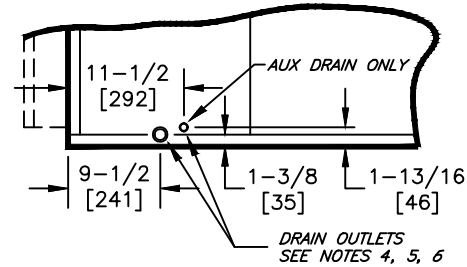


RIGHT HAND



LEFT HAND

STANDARD CIRCULATION					
SIZE	COIL CONNECTION	A	B	C	D
08	7/8 [23]	9-1/8 [232]	3-5/8 [92]	4-1/8 [105]	15-3/4 [401]
12					
16	1-1/8 [29]				
20					20-5/8 [523]
30	1-3/8 [35]				
40	1-5/8 [42]				4-3/8 [112]



TYPICAL DRAIN LOCATIONS

"LO GPM" CIRCULATION					
SIZE	COIL CONNECTION	A	B	C	D
08	7/8 [23]	9-1/8 [232]	3-5/8 [92]	4-1/8 [105]	15-3/4 [401]
12					
16					
20					15-7/8 [404]
30	1-1/8 [29]				20-7/8 [531]
40					23-3/8 [594]

"HIGH GPM" CIRCULATION					
SIZE	COIL CONNECTION	A	B	C	D
08	7/8 [23]	9-1/8 [232]	3-5/8 [92]	4-1/8 [105]	15-3/4 [401]
12					
16	1-1/8 [29]			4-3/8 [112]	15-7/8 [404]
20	1-3/8 [35]				20-5/8 [523]
30	1-5/8 [42]			4-5/8 [118]	22-7/8 [582]
40	2-1/8 [54]				

NOTES:

- ALL DIMENSIONS ARE INCHES [MM]
- ALL DIMENSIONS ARE $\pm 1/2"$ [13]
- METRIC VALUES ARE SOFT CONVERSION
- STANDARD GALVANIZED IAQ DRAIN PAN HAS 1-1/8" ODM COPPER CONNECTION ON ONE SIDE. STAINLESS STEEL IAQ DRAIN PAN HAS 1" GALVANIZED SCH. 40 THREADED STEEL CONNECTION ON ONE SIDE ONLY. OPTIONAL AUX CONNECTION IS 3/8" GALVANIZED SCH. 40 THREADED STEEL ON SAME SIDE AS COIL HAND.
- OPTIONAL FLAT GALVANIZED DRAIN PAN HAS 1-1/8" ODM COPPER CONNECTION. OPTIONAL AUX CONNECTION IS 5/8" ODM COPPER. STANDARD AND AUX CONNECTIONS ARE ON BOTH SIDES. CAP UNUSED CONNECTIONS.
- HEATING-ONLY UNITS MAY NOT INCLUDE A DRAIN PAN UNDER HEATING COIL. SEE ACTUAL ORDER DOCUMENTS.
- HORIZONTAL UNIT SHOWN. COIL CONNECTION LOCATIONS ARE TYPICAL FOR VERTICAL UNITS RELATIVE TO LOWER BOTTOM CORNER AT ENTERING AIR SIDE
- ALL CONNECTIONS ARE ODM COPPER SWEAT UNLESS OTHER NOTED
- FIELD PIPING SHOULD BE BASED ON JOB REQUIREMENTS, NOT UNIT CONNECTION SIZE

Revision Date: 12/14

Form: BCS11-WC11

Replaces: NEW