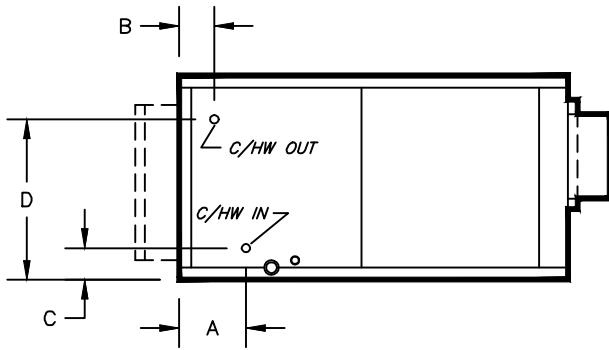
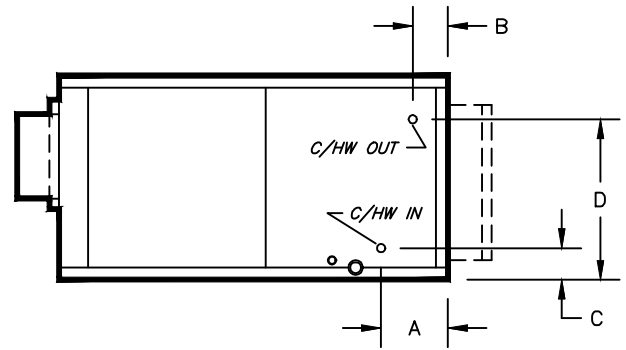
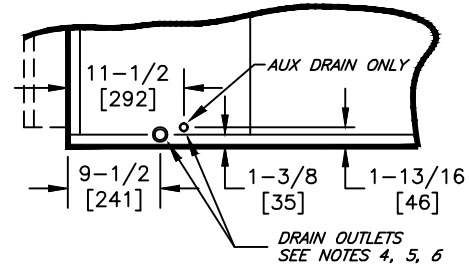


**KBH, KBV - HORIZONTAL & VERTICAL BLOWER COIL**  
 COIL CONNECTION LOCATION - 1 ROW HOT WATER COIL, HEATING ONLY

**SUBMITTAL SHEET**

**RIGHT HAND**

**LEFT HAND**

STANDARD CIRCULATION					
SIZE	COIL CONNECTION	A	B	C	D
08	5/8 [16]	4-1/2 [115]	2-5/8 [67]	4-1/8 [105]	15-3/4 [401]
12					
16					
20					
30	7/8 [23]	4-5/8 [117]	2-3/8 [60]	4-1/8 [105]	20-7/8 [531]
40	1-1/8 [29]				23-3/8 [594]


**TYPICAL DRAIN LOCATIONS**

"LO GPM" CIRCULATION					
SIZE	COIL CONNECTION	A	B	C	D
08	5/8 [16]	4-1/4 [108]	2-3/4 [70]	3-3/8 [86]	17-1/8 [435]
12					
16					
20					
30	7/8 [23]	4-1/2 [115]	2-5/8 [67]	4-1/8 [105]	20-7/8 [531]
40					23-3/8 [594]

"HIGH GPM" CIRCULATION					
SIZE	COIL CONNECTION	A	B	C	D
08	7/8 [23]	4-1/2 [115]	2-5/8 [67]	4-1/8 [105]	15-3/4 [401]
12					
16					
20					
30	1-1/8 [29]	4-1/2 [115]	2-1/2 [64]	4-1/8 [105]	20-7/8 [531]
40					23-3/8 [594]

**NOTES:**

- ALL DIMENSIONS ARE INCHES [MM]
- ALL DIMENSIONS ARE ±1/2" [13]
- METRIC VALUES ARE SOFT CONVERSION
- STANDARD GALVANIZED IAQ DRAIN PAN HAS 1-1/8" ODM COPPER CONNECTION ON ONE SIDE. STAINLESS STEEL IAQ DRAIN PAN HAS 1" GALVANIZED SCH. 40 THREADED STEEL CONNECTION ON ONE SIDE ONLY. OPTIONAL AUX CONNECTION IS 3/8" GALVANIZED SCH. 40 THREADED STEEL ON SAME SIDE AS COIL HAND.
- OPTIONAL FLAT GALVANIZED DRAIN PAN HAS 1-1/8" ODM COPPER CONNECTION. OPTIONAL AUX CONNECTION IS 5/8" ODM COPPER. STANDARD AND AUX CONNECTIONS ARE ON BOTH SIDES. CAP UNUSED CONNECTIONS.
- HEATING-ONLY UNITS MAY NOT INCLUDE A DRAIN PAN UNDER HEATING COIL. SEE ACTUAL ORDER DOCUMENTS.
- HORIZONTAL UNIT SHOWN. COIL CONNECTION LOCATIONS ARE TYPICAL FOR VERTICAL UNITS RELATIVE TO LOWER BOTTOM CORNER AT ENTERING AIR SIDE
- ALL CONNECTIONS ARE ODM COPPER SWEAT UNLESS OTHER NOTED
- FIELD PIPING SHOULD BE BASED ON JOB REQUIREMENTS, NOT UNIT CONNECTION SIZE

Revision Date: 12/14	Form: BCS11-WC01	Replaces: NEW
----------------------	------------------	---------------