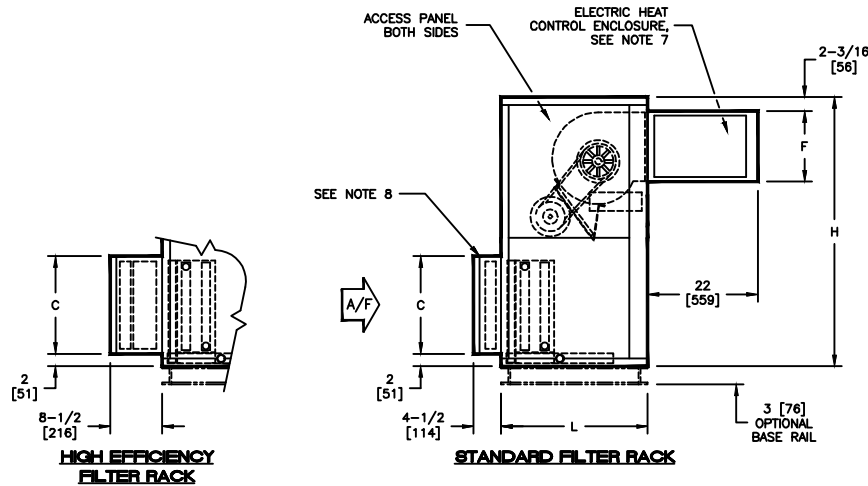
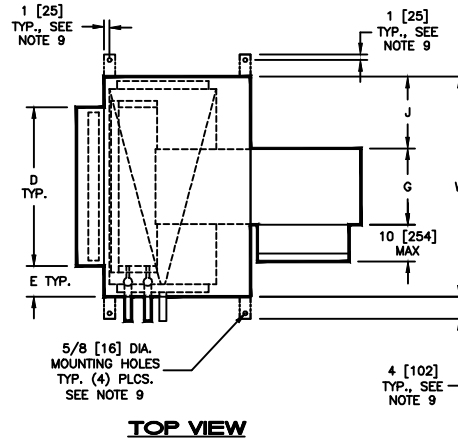


**KBV - VERTICAL BLOWER COIL**

BASIC UNIT - DISCHARGE ARRANGEMENT 3 WITH BLOW-THRU ELECTRIC HEAT

**SUBMITTAL SHEET**


SIZE	FAN SIZE	L	W	H	C	D	E	F	G	J
08	9 X 4 [229 X 102]	24 [610]	30 [762]	44 [1118]	16 [406]	20 [508]	5 [127]	11-7/8 [302]	8-7/8 [225]	10-9/16 [268]
12	9 X 6 [229 X 152]	24 [610]	36 [914]	44 [1118]	16 [406]	25 [635]	5-1/2 [140]	11-7/8 [302]	8-7/8 [225]	13-9/16 [344]
16	10 X 8 [254 X 203]	24 [610]	44 [1118]	44 [1118]	16 [406]	39-1/2 [1003]	2-1/4 [57]	12 [305]	10-7/8 [276]	16-9/16 [421]
20	10 X 10 [254 X 254]	30 [762]	50 [1270]	50 [1270]	16 [406]	44-1/2 [1130]	2-3/4 [70]	12 [305]	13-7/8 [352]	18-1/16 [459]
30	15 X 9 [381 X 229]	30 [762]	59 [1499]	56 [1422]	25 [635]	51 [1295]	4 [102]	16-5/8 [422]	13-7/8 [352]	22-9/16 [573]
40	15 X 11 [381 X 279]	30 [762]	68 [1727]	59 [1499]	25 [635]	59 [1499]	4-1/2 [114]	16-5/8 [422]	15-5/8 [397]	21-11/16 [551]

**NOTES:**

- ALL DIMENSIONS ARE INCHES [MM]
- ALL DIMENSIONS ARE  $\pm 1/4"$  [6]
- METRIC VALUES ARE SOFT CONVERSION
- RIGHT HAND UNIT SHOWN, LEFT HAND UNIT OPPOSITE
- MOTOR/DRIVE LOCATION MAY BE SPECIFIED LEFT HAND OR RIGHT HAND
- STANDARD CONTROL ENCLOSURE LOCATION MATCHES MOTOR/DRIVE POSITION
- PROVIDE SUFFICIENT CLEARANCE TO PERMIT ACCESS TO CONTROLS AND COMPLY WITH APPLICABLE CODES AND ORDINANCES
- SEE SUBMITTAL BCS08-FR01 FOR FILTER RACK DETAILS
- BASE RAIL IS OPTIONAL ON BASE UNIT; SEE DRAWING BCS09-BR01; BASE RAILS MUST BE USED WITH MIXING BOX
- SEE COIL CONNECTION DETAIL DRAWINGS FOR COIL CONNECTION SIZES AND LOCATIONS
- UNITS WITH ELECTRIC HEAT ONLY (NO CHILLED WATER, DX, HOT WATER OR STEAM COILS) AND A DRAIN PAN WILL BE SUPPLIED WITH CONDENSATE DRAIN OUTLET THE SAME SIDE AS THE ELECTRIC HEAT CONTROL ENCLOSURE

Revision Date: 12/14

Form: BCS02-KBV09

Replaces: NEW