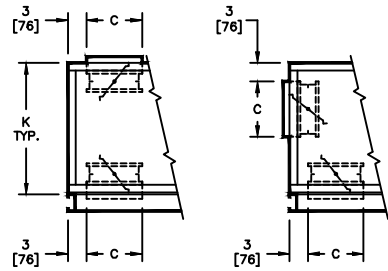
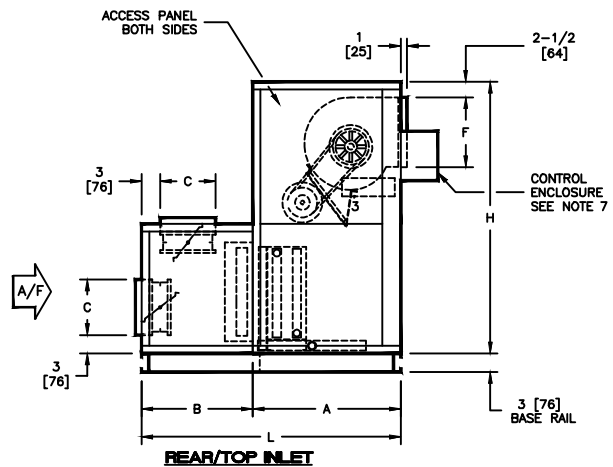

TOP VIEW

TOP/BTM INLET
REAR/BTM INLET

REAR/TOP INLET
SIDE VIEWS

SIZE	FAN SIZE	L	W	H	A	B	C	D	E	F	G	J	K
08	9 X 4 [229 X 102]	42 [1067]	30 [762]	44 [1118]	24 [610]	18 [457]	9 [229]	18 [457]	6 [152]	10-1/4 [260]	6-7/8 [175]	11-9/16 [294]	21 [533]
12	9 X 6 [229 X 152]	42 [1067]	36 [914]	44 [1118]	24 [610]	18 [457]	9 [229]	24 [610]	6 [152]	11-1/4 [286]	8-1/4 [210]	13-7/8 [352]	21 [533]
16	10 X 8 [254 X 203]	42 [1067]	44 [1118]	44 [1118]	24 [610]	18 [457]	9 [229]	30 [762]	7 [178]	13-1/2 [343]	10-1/4 [260]	16-7/8 [429]	21 [533]
20	10 X 10 [254 X 254]	51 [1295]	50 [1270]	50 [1270]	30 [762]	21 [533]	12 [305]	36 [914]	7 [178]	13-1/2 [343]	13-1/4 [337]	18-3/8 [467]	21 [533]
30	15 X 9 [381 X 229]	51 [1295]	59 [1499]	56 [1422]	30 [762]	21 [533]	12 [305]	45 [1143]	7 [178]	16 [406]	13-1/4 [337]	22-7/8 [581]	30 [762]
40	15 X 11 [381 X 279]	54 [1372]	68 [1727]	59 [1499]	30 [762]	24 [610]	15 [381]	48 [1219]	10 [254]	16 [406]	15 [381]	26-1/2 [673]	30 [762]

NOTES:

- ALL DIMENSIONS ARE INCHES [MM]
- ALL DIMENSIONS ARE $\pm 1/4"$ [6]
- METRIC VALUES ARE SOFT CONVERSION
- RIGHT HAND UNIT SHOWN, LEFT HAND UNIT OPPOSITE
- MOTOR/DRIVE LOCATION MAY BE SPECIFIED LEFT HAND OR RIGHT HAND
- STANDARD CONTROL ENCLOSURE LOCATION MATCHES MOTOR/DRIVE POSITION
- PROVIDE SUFFICIENT CLEARANCE TO PERMIT ACCESS TO CONTROLS AND COMPLY WITH APPLICABLE CODES AND ORDINANCES
- SEE SUBMITTAL BCS08-FR01 FOR FILTER RACK DETAILS
- OUTSIDE AND RETURN AIR DAMPER LINKAGE IS OPTIONAL
- SEE COIL CONNECTION DETAIL DRAWINGS FOR COIL CONNECTION SIZES AND LOCATIONS
- HIGH EFFICIENCY FILTER RACK NOT AVAILABLE WITH MIXING BOX

Revision Date: 12/14

Form: BCS02-KBV07

Replaces: NEW