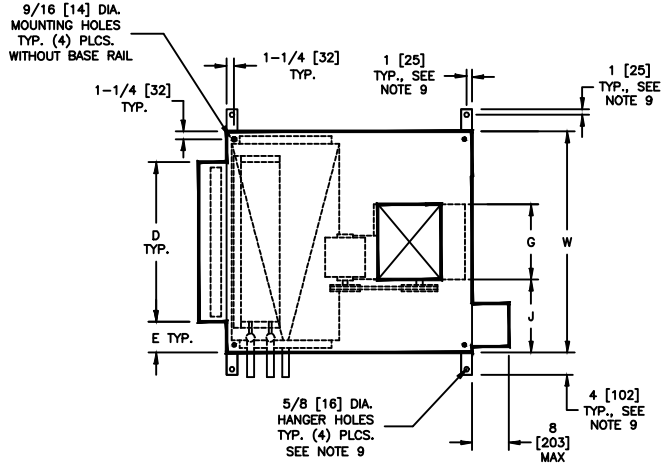
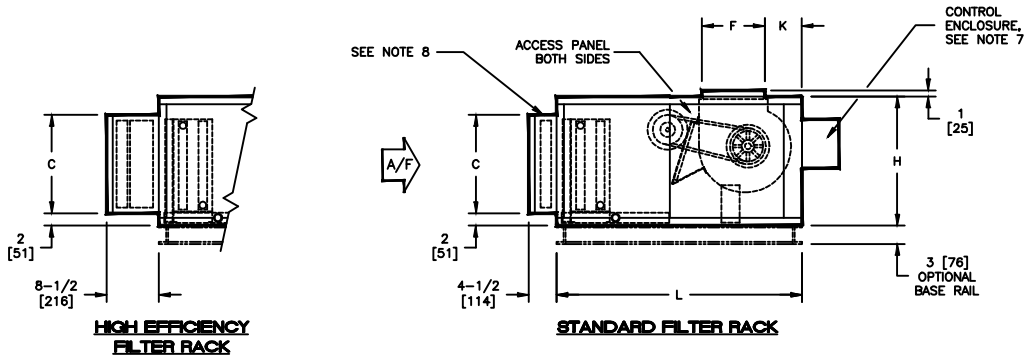


KBH - HORIZONTAL BLOWER COIL
BASIC UNIT - DISCHARGE ARRANGEMENT 1
SUBMITTAL SHEET

TOP VIEW

SIDE VIEWS

SIZE	FAN SIZE	L	W	H	C	D	E	F	G	J	K
08	9 X 4 [229 X 102]	40 [1016]	30 [762]	21 [533]	16 [406]	20 [508]	5 [127]	10-1/4 [260]	6-7/8 [175]	11-9/16 [294]	7 [178]
12	9 X 6 [229 X 152]	40 [1016]	36 [914]	21 [533]	16 [406]	25 [635]	5-1/2 [140]	11-1/4 [286]	8-1/4 [210]	13-7/8 [352]	7 [178]
16	10 X 8 [254 X 203]	40 [1016]	44 [1118]	21 [533]	16 [406]	39-1/2 [1003]	2-1/4 [57]	11-3/8 [289]	10-1/4 [260]	16-7/8 [429]	7 [178]
20	10 X 10 [254 X 254]	40 [1016]	50 [1270]	21 [533]	16 [406]	44-1/2 [1130]	2-3/4 [70]	11-3/8 [289]	13-1/4 [337]	18-3/8 [467]	7 [178]
30	15 X 9 [381 X 229]	46 [1168]	59 [1499]	30 [762]	25 [635]	51 [1295]	4 [102]	16 [406]	13-1/4 [337]	22-7/8 [581]	10-1/4 [260]
40	15 X 11 [381 X 279]	46 [1168]	68 [1727]	30 [762]	25 [635]	59 [1499]	4-1/2 [114]	16 [406]	15 [381]	26-1/2 [673]	10-1/4 [260]

NOTES:

- ALL DIMENSIONS ARE INCHES [MM]
- ALL DIMENSIONS ARE $\pm 1/4"$ [6]
- METRIC VALUES ARE SOFT CONVERSION
- RIGHT HAND UNIT SHOWN, LEFT HAND UNIT OPPOSITE
- MOTOR/DRIVE LOCATION MAY BE SPECIFIED LEFT HAND OR RIGHT HAND
- STANDARD CONTROL ENCLOSURE LOCATION MATCHES MOTOR/DRIVE POSITION
- PROVIDE SUFFICIENT CLEARANCE TO PERMIT ACCESS TO CONTROLS AND COMPLY WITH APPLICABLE CODES AND ORDINANCES
- SEE SUBMITTAL BCS08-FR01 FOR FILTER RACK DETAILS
- BASE RAIL IS OPTIONAL ON BASE UNIT; SEE DRAWING BCS09-BR01; BASE RAILS MUST BE USED WITH MIXING BOX
- SEE COIL CONNECTION DETAIL DRAWINGS FOR COIL CONNECTION SIZES AND LOCATIONS

Revision Date:	12/14	Form:	BCS01-KBH01	Replaces:	NEW
----------------	-------	-------	-------------	-----------	-----