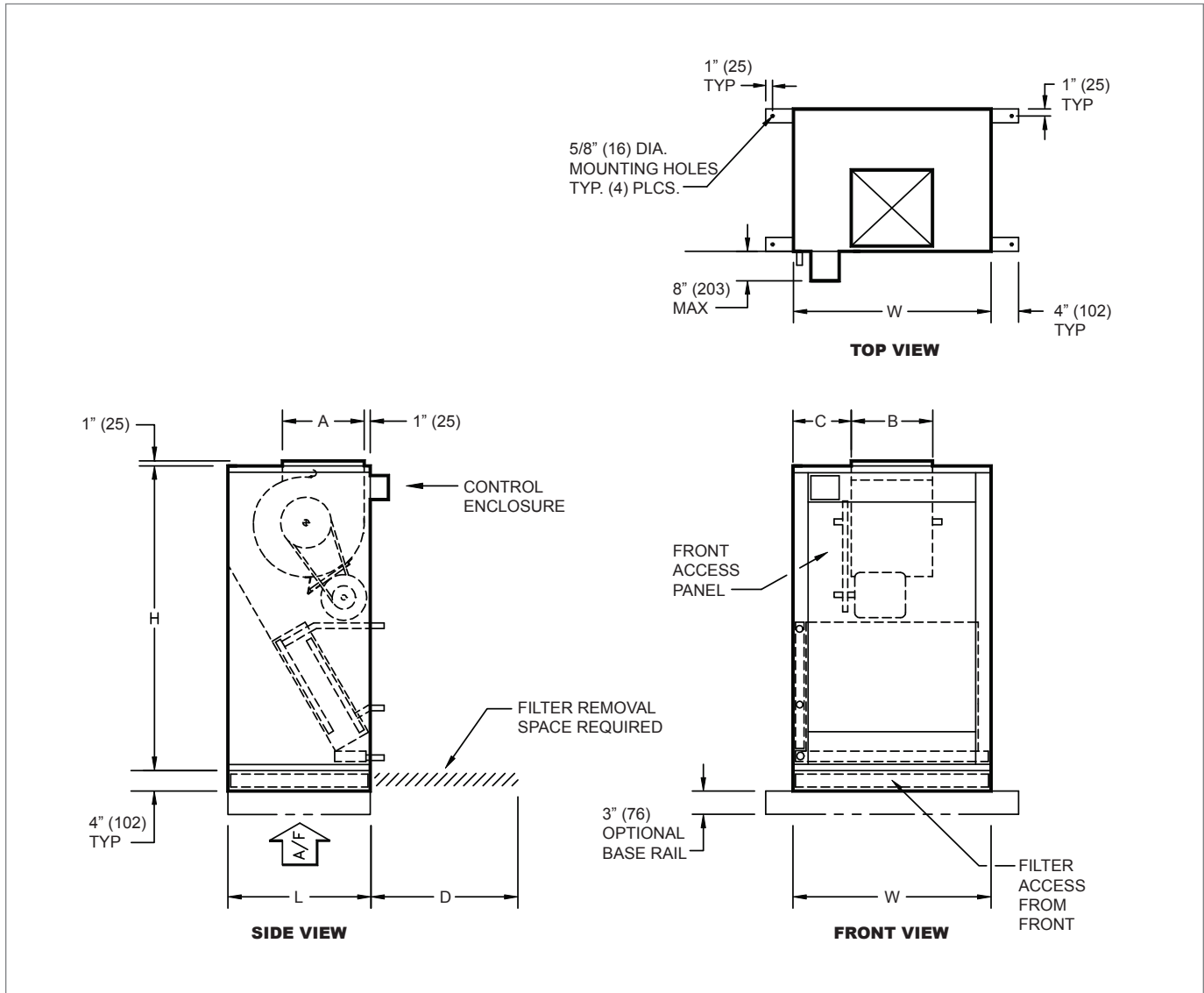


KSL (Bottom Return) Dimensional Information

KSL STANDARD UNIT TOP, FRONT AND SIDE VIEWS

BLOWER COILS



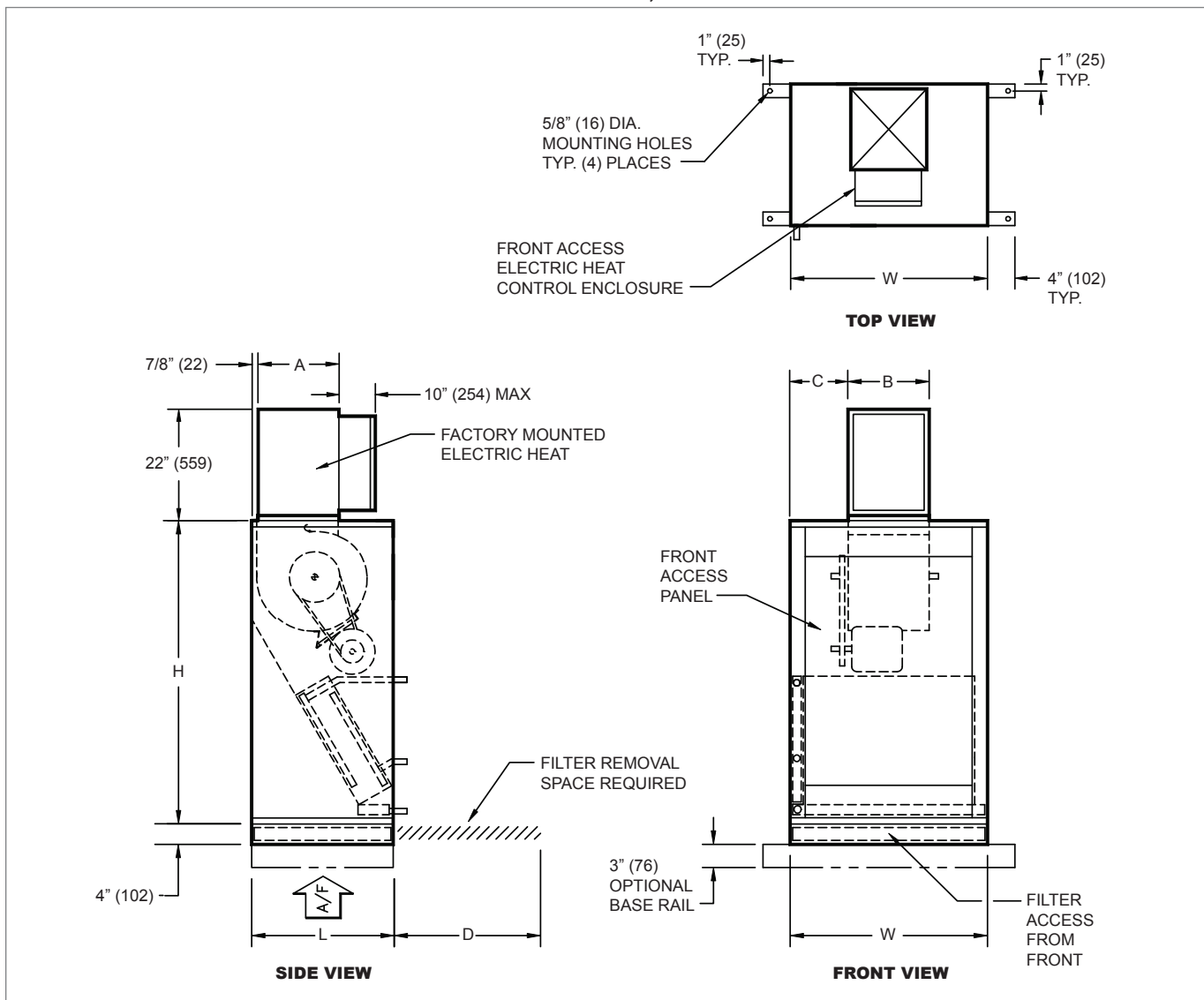
KSL DIMENSIONAL DETAILS

Unit Size	Fan Size	Quantity	H	W	L	A	B	C	D
8	16" x 20" x 2" (406 x 508 x 51)	1	46" (1168)	26" (660)	19" (483)	6 1/2" (165)	6 7/8" (175)	9 9/16" (243)	16" (406)
12	20" x 20" x 2" (508 x 508 x 51)	1	46" (1168)	26" (660)	21" (533)	7 1/2" (190)	8 1/4" (210)	8 7/8" (225)	20" (508)
16	24" x 24" x 2" (610 x 610 x 51)	1	54" (1372)	29" (737)	25" (635)	7 1/2" (190)	10 1/4" (260)	9 3/8" (238)	24" (610)
20	24" x 24" x 2" (610 x 610 x 51)	1	54" (1372)	29" (737)	28" (711)	11 3/8" (289)	13 1/4" (337)	7 7/8" (200)	24" (610)
25	24" x 24" x 2" (610 x 610 x 51)	1 / ea.	60" (1524)	39" (991)	28" (711)	16" (406)	12 7/8" (327)	13 1/16" (332)	24" (610)
30	12" x 24" x 2" (305 x 610 x 51)	1 / ea.	60" (1524)	39" (991)	28" (711)	16" (406)	15" (381)	12" (305)	24" (610)

NOTES: Dimensions in parentheses are mm. All dimensions are ±1/4" (6mm). Metric values are soft conversions. Motor/drive location may be specified left or right hand. Standard control enclosure location matches motor/drive position. Provide sufficient clearance to access electrical controls and comply with all applicable codes and ordinances. Maximum total internal coil rows: 6. Left hand unit shown; right hand unit has CW and HW piping connections mirrored. Filter assembly runs the full length of the unit size.

© KRUEGER 2014

K
S
L
-
K
S
B

KSL (Bottom Return) with Blow Thru Electric Heat Dimensional Information
KSL STANDARD UNIT WITH BLOW THRU ELECTRIC HEAT TOP, FRONT AND SIDE VIEWS

KSL DIMENSIONAL DETAILS

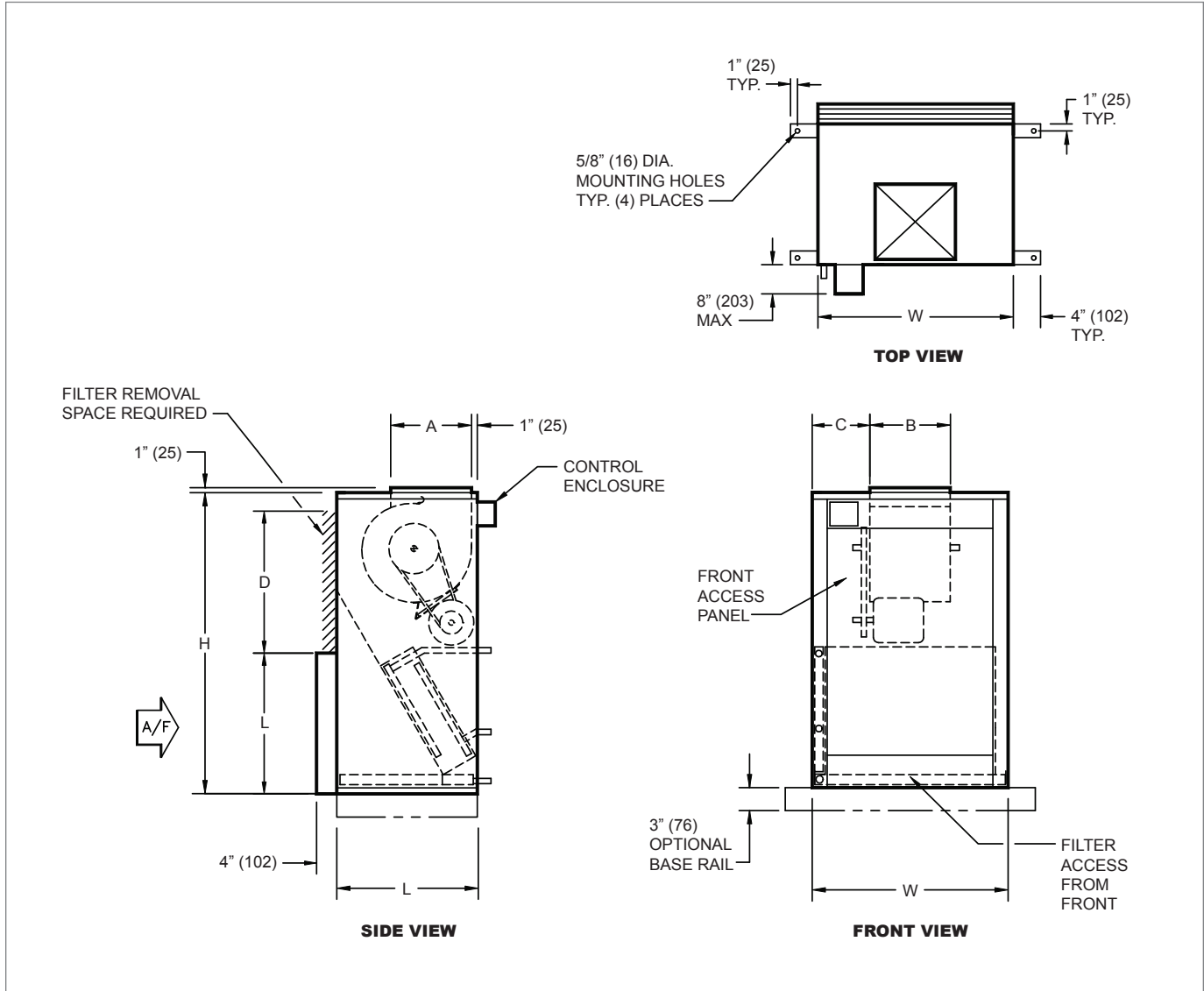
Unit Size	Fan Size	Quantity	H	W	L	A	B	C	D
8	16" x 20" x 2" (406 x 508 x 51)	1	46" (1168)	26" (660)	19" (483)	8 7/8" (226)	11 7/8" (302)	7 1/16" (180)	16" (406)
12	20" x 20" x 2" (508 x 508 x 51)	1	46" (1168)	26" (660)	21" (533)	8 7/8" (226)	11 7/8" (302)	7 1/16" (180)	20" (508)
16	24" x 24" x 2" (610 x 610 x 51)	1	54" (1372)	29" (737)	25" (635)	10 7/8" (277)	12" (305)	8 1/2" (216)	24" (610)
20	24" x 24" x 2" (610 x 610 x 51)	1	54" (1372)	29" (737)	28" (711)	13 7/8" (353)	14" (356)	7 1/2" (190)	24" (610)
25	24" x 24" x 2" (610 x 610 x 51)	1 / ea.	60" (1524)	39" (991)	28" (711)	13 7/8" (353)	16 5/8" (422)	11 1/16" (281)	24" (610)
30	12" x 24" x 2" (305 x 610 x 51)	1 / ea.	60" (1524)	39" (991)	28" (711)	15 5/8" (397)	16 5/8" (422)	11 1/16" (281)	24" (610)

NOTES: Dimensions in parentheses are $\pm 1/4"$ (6mm). Metric values are soft conversions. Left hand unit shown. Motor/drive location may be specified left or right hand. Standard control enclosure location matches motor/drive position. Provide sufficient clearance to access electrical controls and comply with all applicable codes and ordinances. Optional base rail designed for use with floor mount vibration isolators. Blow-thru electric heat may not be combined with supply plenum or discharge section.

KSB (Rear Return) Dimensional Information

KSB STANDARD UNIT TOP, FRONT AND SIDE VIEWS

BLOWER COILS



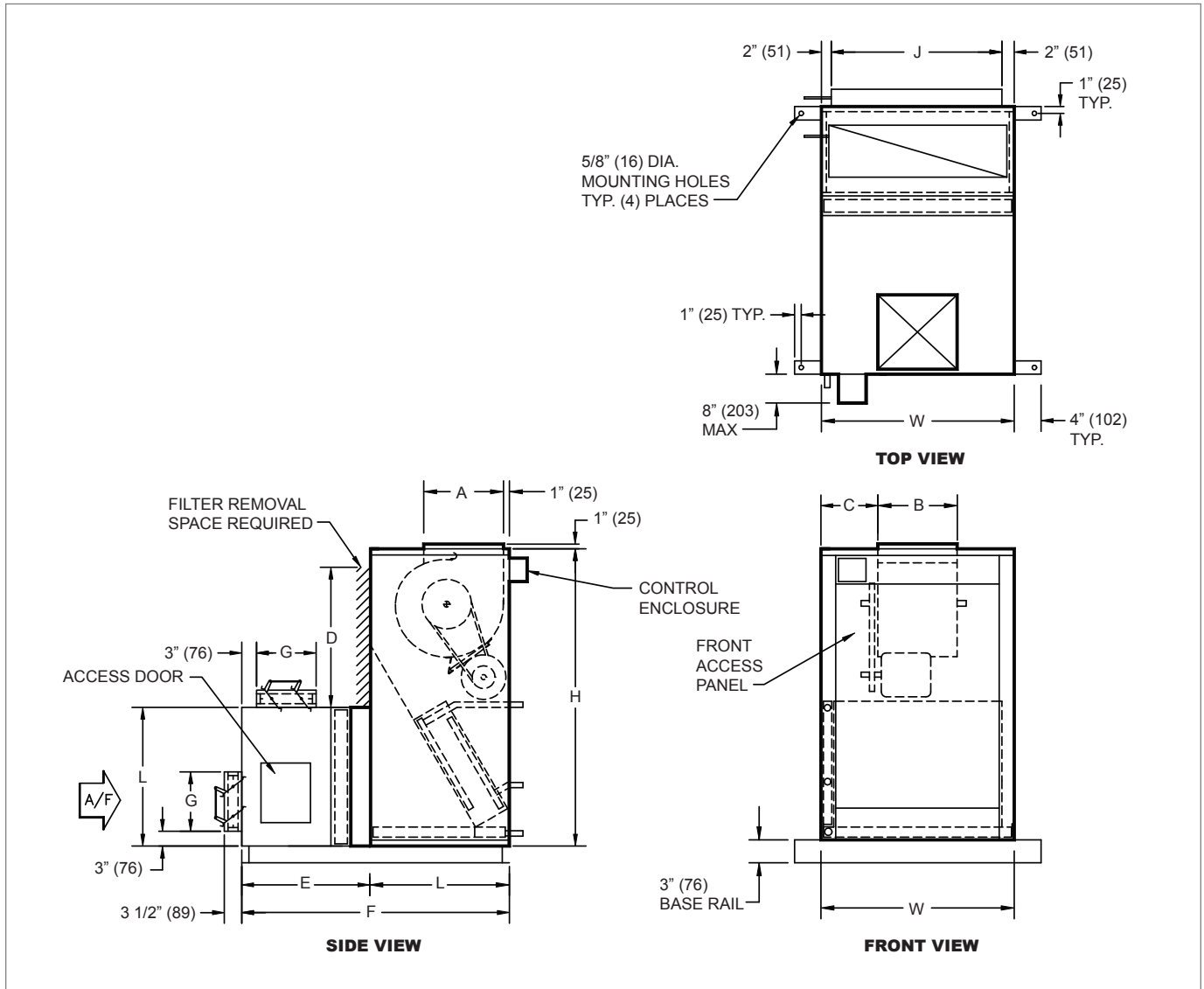
KSB DIMENSIONAL DETAILS

Unit Size	Fan Size	Quantity	H	W	L	A	B	C	D
8	16" x 20" x 2" (406 x 508 x 51)	1	46" (1168)	26" (660)	19" (483)	6 1/2" (165)	6 7/8" (175)	9 9/16" (243)	16" (406)
12	20" x 20" x 2" (508 x 508 x 51)	1	46" (1168)	26" (660)	21" (533)	7 1/2" (190)	8 1/4" (210)	8 7/8" (225)	20" (508)
16	24" x 24" x 2" (610 x 610 x 51)	1	54" (1372)	29" (737)	25" (635)	7 1/2" (190)	10 1/4" (260)	9 3/8" (238)	24" (610)
20	24" x 24" x 2" (610 x 610 x 51)	1	54" (1372)	29" (737)	28" (711)	11 3/8" (289)	13 1/4" (337)	7 7/8" (200)	24" (610)
25	24" x 24" x 2" (610 x 610 x 51)	1 / ea.	60" (1524)	39" (991)	28" (711)	16" (406)	12 7/8" (327)	13 1/16" (332)	24" (610)
30	12" x 24" x 2" (305 x 610 x 51)	1 / ea.	60" (1524)	39" (991)	28" (711)	16" (406)	15" (381)	12" (305)	24" (610)

NOTES: Dimensions in parentheses are mm. All dimensions are ±1/4" (6mm). Metric values are soft conversions. Motor/drive location may be specified Left or Right Hand. Standard control enclosure location matches motor/drive position. Provide sufficient clearance to access electrical controls and comply with all applicable codes and ordinances. Maximum total internal coil rows: 6. Left hand unit shown; right hand unit has CW and HW piping connections mirrored. Filter assembly runs the full length of the unit size.

© KRUEGER 2014

K
S
L
-
K
S
B

KSB (Rear Return) with Inlet Damper Section Dimensional Information
KSB STANDARD UNIT WITH INLET DAMPER SECTION TOP, FRONT AND SIDE VIEWS

KSB DIMENSIONAL DETAILS

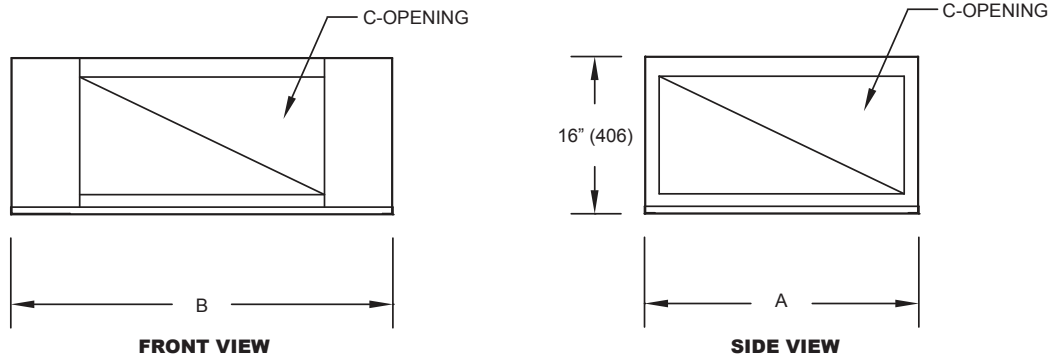
Unit Size	Fan Size	Qty	H	W	L	A	B	C	D	E	F	G	J
8	16" x 20" x 2" (406 x 508 x 51)	1	46" (1168)	26" (660)	19" (483)	6 1/2" (165)	6 7/8" (175)	9 9/16" (243)	16" (406)	15" (381)	35" (889)	6" (152)	22" (559)
12	20" x 20" x 2" (508 x 508 x 51)	1	46" (1168)	26" (660)	21" (533)	7 1/2" (190)	8 1/4" (210)	8 7/8" (225)	20" (508)	18" (457)	40" (1016)	9" (229)	22" (559)
16	24" x 24" x 2" (610 x 610 x 51)	1	54" (1372)	29" (737)	25" (635)	7 1/2" (190)	10 1/4" (260)	9 3/8" (238)	24" (610)	18" (457)	44" (1118)	9" (229)	25" (635)
20	24" x 24" x 2" (610 x 610 x 51)	1	54" (1372)	29" (737)	28" (711)	11 3/8" (289)	13 1/4" (337)	7 7/8" (200)	24" (610)	21" (533)	50" (1270)	12" (305)	25" (635)
25	24" x 24" x 2" (610 x 610 x 51)	1 ea.	60" (1524)	39" (991)	28" (711)	16" (406)	12 7/8" (327)	13 1/16" (332)	24" (610)	21" (533)	50" (1270)	12" (305)	35" (889)
30	12" x 24" x 2" (305 x 610 x 51)	1 ea.	60" (1524)	39" (991)	28" (711)	16" (406)	15" (381)	12" (305)	24" (610)	21" (533)	50" (1270)	12" (305)	35" (889)

NOTES: Dimensions in parentheses are mm. All dimensions are $\pm 1/4"$ (6mm). Metric values are soft conversions. Left hand unit shown. Motor/drive location may be specified left or right hand. Standard control enclosure location matches motor/drive position. Provide sufficient clearance to access electrical controls and comply with all applicable codes and ordinances. Optional base rail designed for use with floor mount vibration isolators. Blow-thru electric heat may not be combined with supply plenum or discharge section.

KSL Return Plenum Dimensional Information

KSL RETURN PLENUM FRONT AND SIDE VIEWS

BLOWER COILS

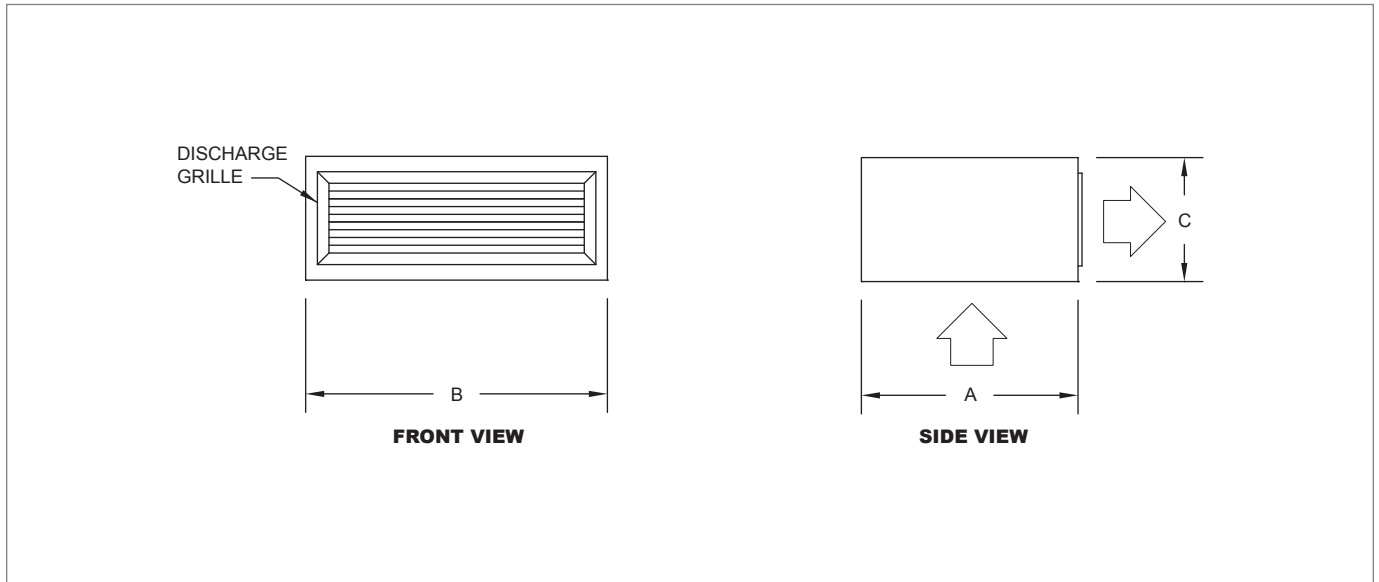


KSL RETURN PLENUM DIMENSIONAL DETAILS

Unit Size	A	B	Supply Grille
8	19" (483)	26" (660)	9" x 16" (229 x 406)
12	21" (533)	26" (660)	9" x 18" (229 x 457)
16	25" (635)	29" (737)	9" x 22" (229 x 559)
20	28" (711)	29" (737)	12" x 22" (305 x 559)
25	28" (711)	39" (991)	12" x 25" (305 x 635)
30	28" (711)	39" (991)	12" x 25" (305 x 635)

NOTES: Dimensions in parentheses are mm. All dimensions are ±1/4" (6mm). Metric values are soft conversions. Bottom and back panels are fixed. Both side panels are removable and can be used to cover the front opening.

K
S
L
-
K
S
B

KSL, KSB Discharge Plenum with Double Deflection Grille Dimensional Information –
DISCHARGE PLENUM WITH DOUBLE DEFLECTION GRILLE FRONT AND SIDE VIEWS


BLOWER COILS

DISCHARGE PLENUM WITH DOUBLE DEFLECTION GRILLE DIMENSIONAL DETAILS

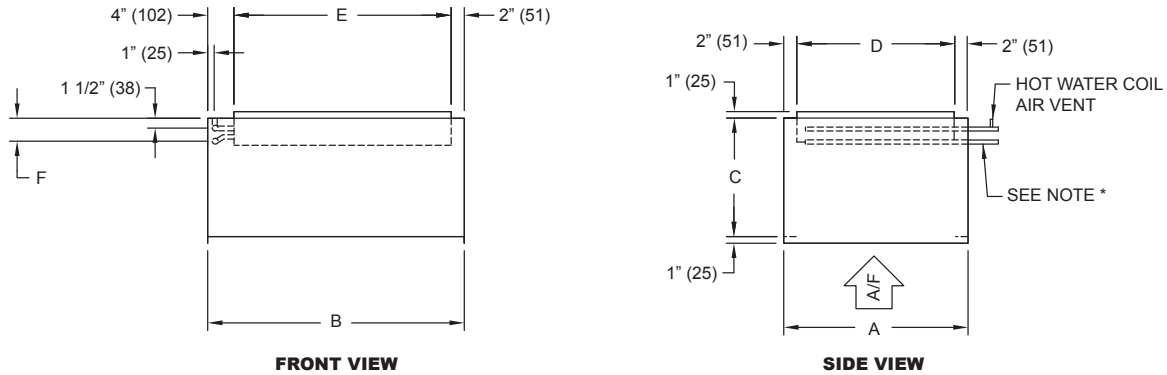
Unit Size	A	B	C	Supply Grille
8	19" (483)	26" (660)	12" (305)	18" x 8" (457 x 203)
12	21" (533)	26" (660)	12" (305)	22" x 8" (559 x 203)
16	25" (635)	29" (737)	14" (356)	24" x 10" (610 x 254)
20	28" (711)	29" (737)	16" (406)	24" x 12" (610 x 305)
25	28" (711)	39" (991)	16" (406)	30" x 12" (762 x 305)
30	28" (711)	39" (991)	16" (406)	36" x 12" (914 x 305)

NOTES: Dimensions in parentheses are mm. All dimensions are $\pm 1/4"$ (6mm). Metric values are soft conversions. Discharge plenum shipped attached to unit. Discharge plenum includes double deflection discharge grille; location is front as shown. Discharge plenum may not be combined with blow through electric heat.

KSL, KSB Discharge Section with Heating Coil Dimensional Information

DISCHARGE SECTION WITH HEATING COIL FRONT AND SIDE VIEWS

BLOWER COILS



DISCHARGE SECTION WITH HEATING COIL DIMENSIONAL DETAILS

Unit Size	A	B	C	D	E	F				Weight lbs [kg]
						Hot Water		Steam		
						1 Row	2 Row	1 Row	2 Row	
8	19" (483)	26" (660)	12" (305)	15" (381)	20" (508)	2 3/4" (70)	2 3/4" (70)	2 3/4" (70)	2 3/4" (70)	35 [16]
12	21" (533)	26" (660)	12" (305)	17" (432)	20" (508)	2 3/4" (70)	2 3/4" (70)	2 3/4" (70)	2 3/4" (70)	37 [17]
16	25" (635)	29" (737)	14" (356)	21" (533)	23" (584)	2 3/4" (70)	3" (76)	2 3/4" (70)	3 1/4" (83)	49 [22]
20	28" (711)	29" (737)	14" (356)	24" (610)	23" (584)	2 3/4" (70)	3" (76)	3 1/4" (83)	3 1/4" (83)	53 [24]
25	28" (711)	39" (991)	18" (457)	24" (610)	33" (838)	2 3/4" (70)	3" (76)	3 1/4" (83)	3 3/4" (95)	76 [35]
30	28" (711)	39" (991)	18" (457)	24" (610)	33" (838)	3" (76)	3 1/4" (83)	3 3/4" (95)	3 3/4" (95)	80 [36]

COIL CONNECTION SIZES

Unit Size	Hot Water		Steam			
	1 Row	2 Row	1 Row		2 Row	
			Supply	Condensate	Supply	Condensate
8	5/8" (16)	5/8" (16)	1 1/8" (29)	7/8" (22)	1 1/8" (29)	7/8" (22)
12	5/8" (16)	5/8" (16)	1 1/8" (29)	7/8" (22)	1 1/8" (29)	7/8" (22)
16	5/8" (16)	5/8" (16)	1 1/8" (29)	7/8" (22)	1 3/8" (35)	1 1/8" (29)
20	5/8" (16)	5/8" (16)	1 3/8" (35)	1 1/8" (29)	1 3/8" (35)	1 1/8" (29)
25	5/8" (16)	7/8" (22)	1 3/8" (35)	1 1/8" (29)	1 5/8" (41)	1 1/8" (29)
30	7/8" (22)	7/8" (22)	1 5/8" (41)	1 1/8" (29)	1 5/8" (41)	1 1/8" (29)

NOTES: Dimensions in parentheses are mm. All dimensions are ±1/4" (6mm). Metric values are soft conversions. This section required with 6 row cooling in conjunction with hot water and all steam heating. Weight with 2 row dry coil. Coil connection dimension + 1/2" (13mm). Discharge section may not be combined with blow thru electric heat.

*Hot Water Coils: Supply, bottom; Return, top. Steam Coils: Supply, top; Condensate, bottom.

K
S
L
-
K
S
B