

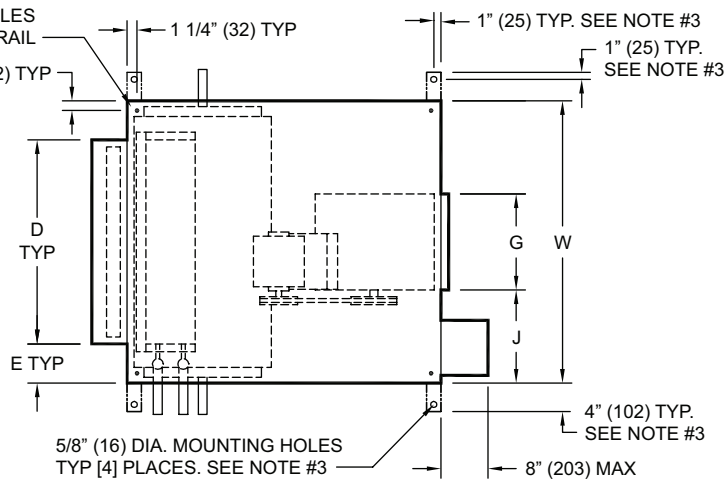
**KBH Dimensional Information**

**KBH TOP AND SIDE VIEWS (ARR 3)**

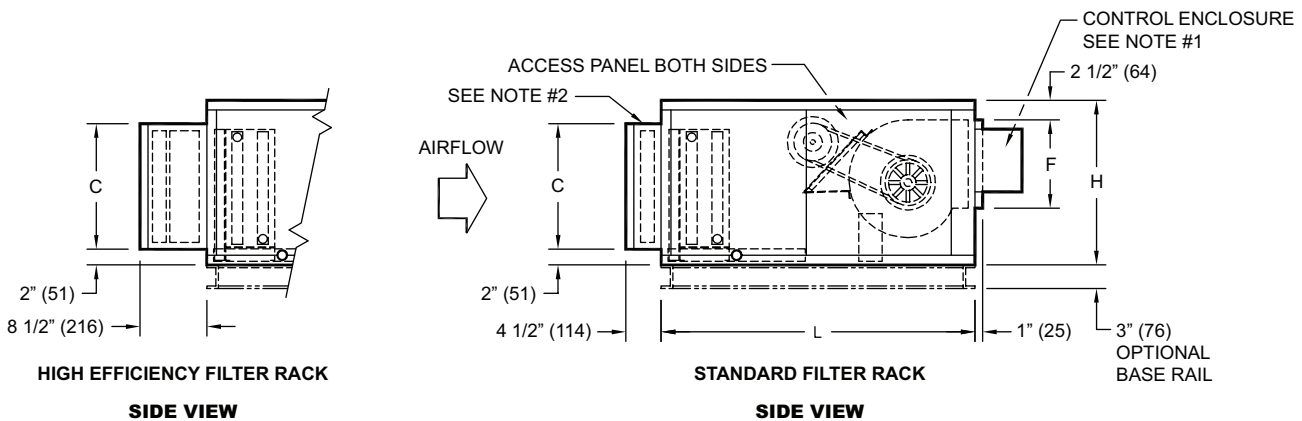
BLOWER COILS

**NOTES:**

1. Provide sufficient clearance to permit access to controls and comply with applicable codes and ordinances.
2. See drawing BCS06-FR01 for filter rack details.
3. Base rail is optional on the base unit. See drawing BCS07-BR01. Base rails must be used with mixing box.



**TOP VIEW**



**HIGH EFFICIENCY FILTER RACK**

**SIDE VIEW**

**STANDARD FILTER RACK**

**SIDE VIEW**

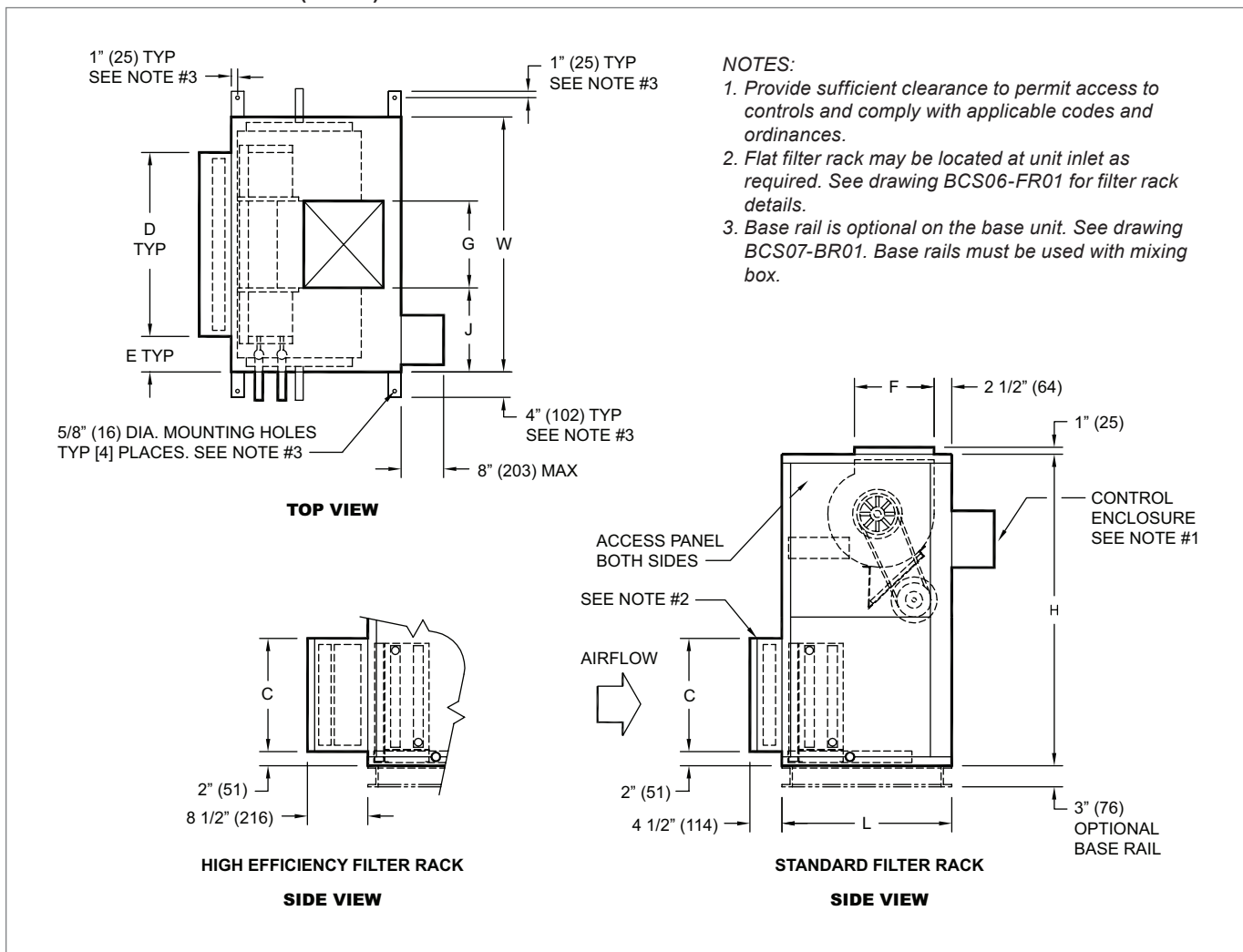
**KBH DIMENSIONAL DETAILS**

Unit Size	Fan Size	L	W	H	C	D	E	F	G	J
8	9" x 4" (229 x 102)	40" (1016)	30" (762)	21" (533)	16" (406)	20" (508)	5" (127)	10 1/4" (260)	6 7/8" (175)	11 9/16" (294)
12	9" x 6" (229 x 152)	40" (1016)	36" (914)	21" (533)	16" (406)	25" (635)	5 1/2" (140)	11 1/4" (286)	8 1/4" (210)	13 7/8" (352)
16	10" x 8" (254 x 203)	40" (1016)	44" (1118)	21" (533)	16" (406)	39 1/2" (1003)	2 1/4" (57)	11 3/8" (289)	10 1/4" (260)	16 7/8" (429)
20	10" x 10" (254 x 254)	40" (1016)	50" (1270)	21" (533)	16" (406)	44 1/2" (1130)	2 3/4" (70)	11 3/8" (289)	13 1/4" (337)	18 3/8" (467)
30	15" x 9" (381 x 229)	46" (1168)	59" (1499)	30" (762)	25" (635)	51" (1295)	4" (102)	16" (406)	13 1/4" (337)	22 7/8" (581)
40	15" x 11" (381 x 279)	46" (1168)	68" (1727)	30" (762)	25" (635)	59" (1499)	4 1/2" (114)	16" (406)	15" (381)	26 1/2" (673)

NOTES: Dimensions in parentheses are mm. All dimensions are ±1/4" (6mm). Metric values are soft conversion. Right hand unit shown, left hand unit opposite. Motor/drive location may be specified left hand or right hand. Standard control enclosure location matches motor/drive position. See coil connection sizes and locations.

K  
B  
H  
-  
K  
B  
V

© KRUEGER 2014

**KBV Dimensional Information**
**KBV TOP AND SIDE VIEWS (ARR 2)**

**KBV DIMENSIONAL DETAILS**

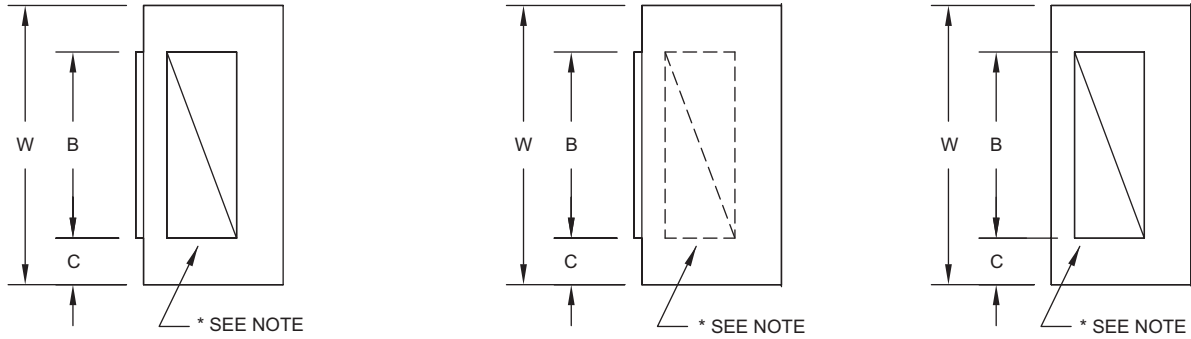
Unit Size	Fan Size	L	W	H	C	D	E	F	G	J
8	9" x 4" (229 x 102)	24" (610)	30" (762)	44" (1118)	16" (406)	20" (508)	5" (127)	10 1/4" (260)	6 7/8" (175)	11 9/16" (294)
12	9" x 6" (229 x 152)	24" (610)	36" (914)	44" (1118)	16" (406)	25" (635)	5 1/2" (140)	11 1/4" (286)	8 1/4" (210)	13 7/8" (352)
16	10" x 8" (254 x 203)	24" (610)	44" (1118)	44" (1118)	16" (406)	39 1/2" (1003)	2 1/4" (57)	13 1/2" (343)	10 1/4" (260)	16 7/8" (429)
20	10" x 10" (254 x 254)	30" (762)	50" (1270)	50" (1270)	16" (406)	44 1/2" (1130)	2 3/4" (70)	13 1/2" (343)	13 1/4" (337)	18 3/8" (467)
30	15" x 9" (381 x 229)	30" (762)	59" (1499)	56" (1422)	25" (635)	51" (1295)	4" (102)	16" (406)	13 1/4" (337)	22 7/8" (581)
40	15" x 11" (381 x 279)	30" (762)	68" (1727)	59" (1499)	25" (635)	59" (1499)	4 1/2" (114)	16" (406)	15" (381)	26 1/2" (673)

**NOTES:** Dimensions in parentheses are mm. All dimensions are ±1/4" (6mm). Metric values are soft conversion. Right hand unit shown, left hand unit opposite. Motor/drive location may be specified left hand or right hand. Standard control enclosure location matches motor/drive position. See coil connection drawings for coil connection sizes and locations.

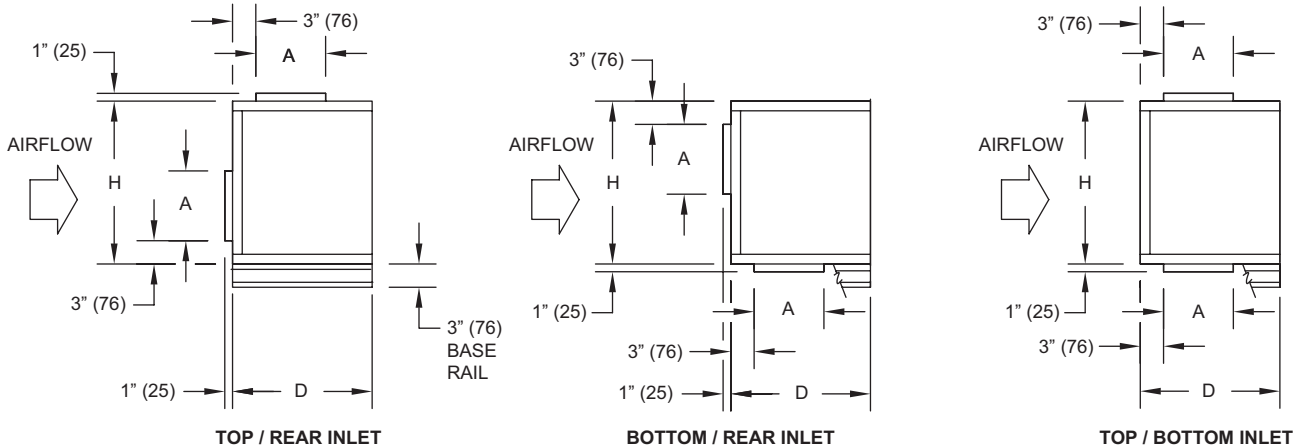
**KBH, BHV Standard Mixing Box Dimensional Information**

**STANDARD MIXING BOX TOP AND SIDE VIEWS**

BLOWER COILS



**TOP VIEWS**



**SIDE VIEWS**

\* Damper drive rods are internal, located on both sides of unit.

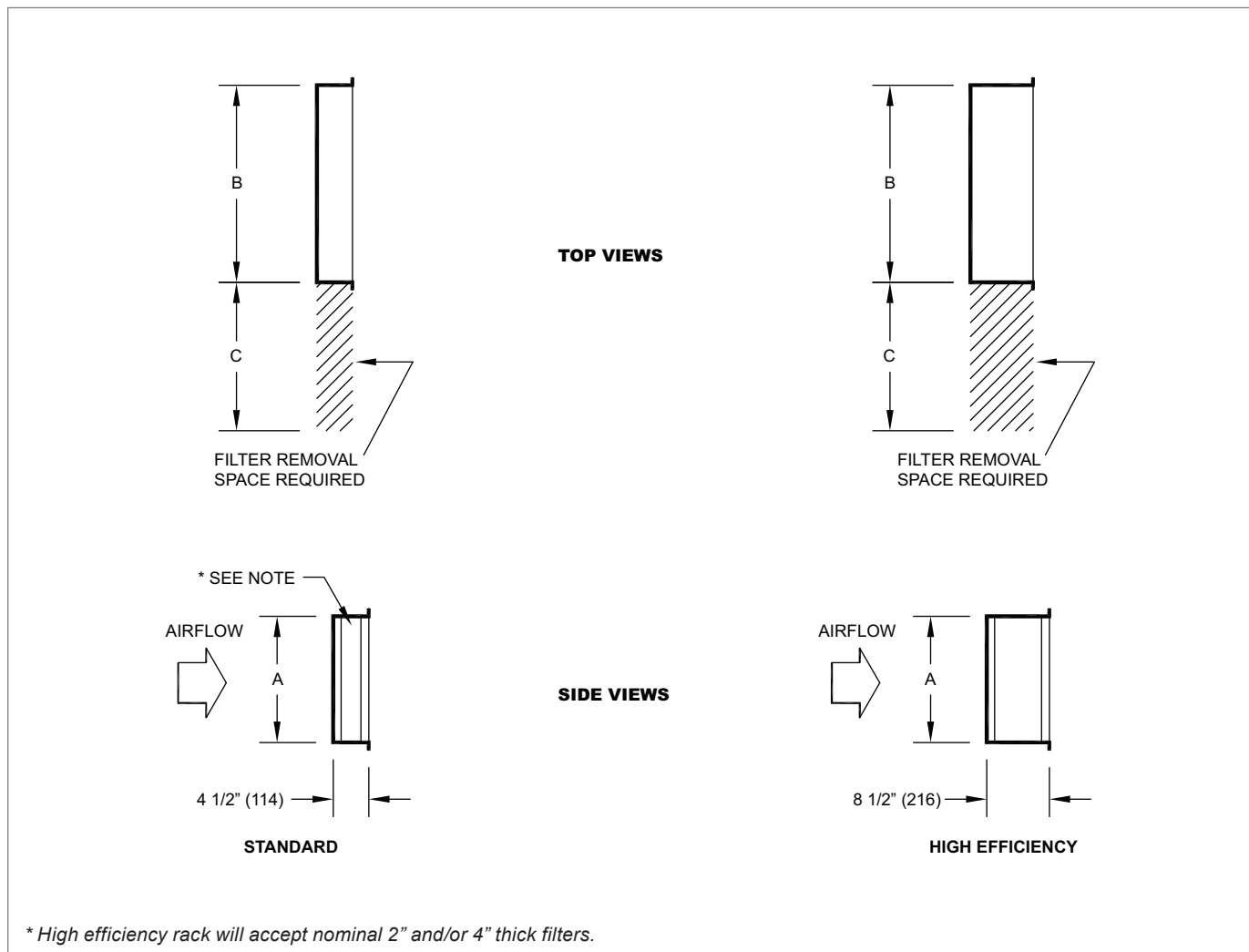
**STANDARD MIXING BOX, DIMENSIONAL DETAILS**

Unit Size	H	W	A	B	C	D
8	21" (533)	30" (762)	9" (229)	18" (457)	6" (152)	18" (457)
12	21" (533)	36" (914)	9" (229)	24" (610)	6" (152)	18" (457)
16	21" (533)	44" (1118)	9" (229)	30" (762)	7" (178)	18" (457)
20	21" (533)	50" (1270)	12" (305)	36" (914)	7" (178)	21" (533)
30	30" (762)	59" (1499)	12" (305)	45" (1143)	7" (178)	21" (533)
40	30" (762)	68" (1727)	15" (381)	48" (1219)	10" (254)	24" (610)

NOTES: Dimensions in parentheses are mm. All dimensions are ±1/4" (6mm). Metric values are soft conversion. Mixing box includes space for standard flat filter rack. See drawing BCS07-BR01. Base rails are including with mixing box.

KBH - KBV

© KRUEGER 2014

**KBH, BHV Standard Flat Filter Rack Dimensional Information**
**STANDARD FLAT FILTER RACK TOP AND SIDE VIEWS**


BLOWER COILS

\* High efficiency rack will accept nominal 2" and/or 4" thick filters.

**STANDARD MIXING BOX, DIMENSIONAL DETAILS**

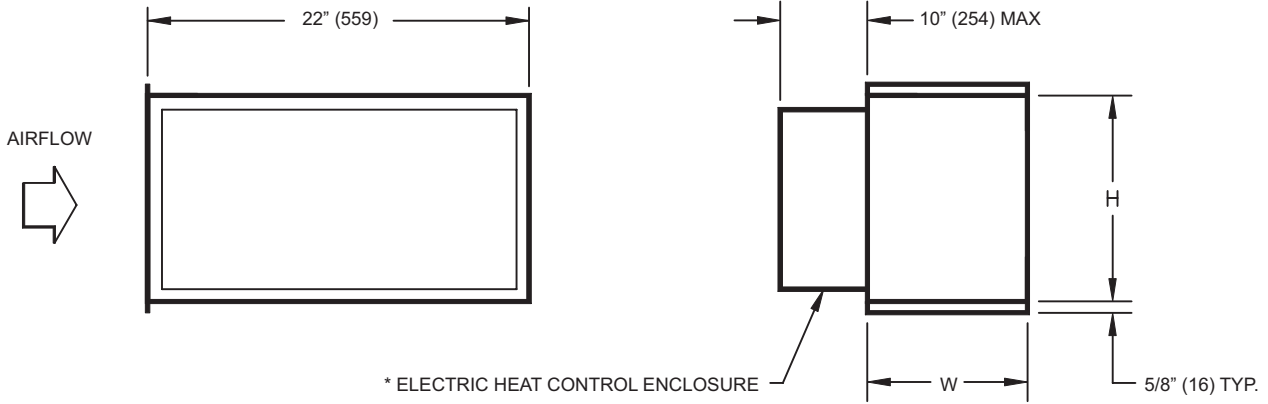
Unit Size	H	W	A	Filter Quantity	Filter Size
8	16" (406)	20" (508)	20" (508)	1	16" x 20"
12	16" (406)	25" (635)	25" (635)	1	16" x 25"
16	16" (406)	39 1/2" (1003)	20" (508)	2	16" x 20"
20	16" (406)	44 1/2" (1130)	25" (635)	1 1	16" x 20" 16" x 25"
30	25" (635)	51" (1295)	25" (635)	2 1	16" x 25" 20" x 25"
40	25" (635)	59" (1499)	25" (635)	3	20" x 25"

NOTES: Dimensions in parentheses are mm. All dimensions are  $\pm 1/4"$  (6mm). Metric values are soft conversion. Flat filter rack may be located at unit inlet as required. Standard rack will accept nominal 1" or 2" thick filters. 1" duct connections space provided on entering side of rack for connection of field ductwork. Hinged cover provided in both sides of externally mounted filter racks. Internal standard filter racks have pivoting bar type filter retainer. See individual unit submittal drawings for location of filter rack on unit. High efficiency rack not available with mixing box option.

**KBH, KBV Electric Heat Dimensional Information**

**BLOW THRU ELECTRIC HEAT TOP AND SIDE VIEWS**

BLOWER COILS



\*Provide sufficient clearance to permit access to controls and comply with applicable codes and ordinances.

**BLOW THRU ELECTRIC HEAT DIMENSIONAL DETAILS**

Unit Size	H	W	Weight lbs (kg)
8	11 7/8" (302)	8 7/8" (225)	42" (19)
12	11 7/8" (302)	8 7/8" (225)	42" (19)
16	12" (305)	10 7/8" (278)	42" (19)
20	12" (305)	13 7/8" (352)	50" (23)
30	16 5/8" (422)	13 7/8" (352)	55" (25)
40	16 5/8" (422)	15 5/8" (397)	55" (25)

NOTES: Dimensions in parentheses are mm. All dimensions are ±1/4" (6mm). Metric values are soft conversion. Motor/drive location may be specified left or right hand. Standard control enclosure location matches motor/drive position. Available for horizontal discharge only.

KBH - KBV

© KRUEGER 2014