

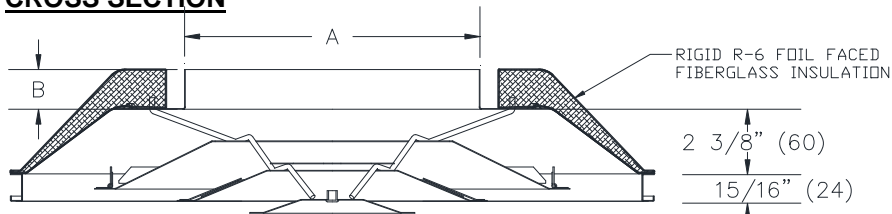
JOB NAME \_\_\_\_\_  
 ARCHITECT \_\_\_\_\_  
 ENGINEER \_\_\_\_\_  
 CONTRACTOR \_\_\_\_\_  
 LOCATION \_\_\_\_\_

**SUBMITTALSHEET**  
 Form Number: R6011 Effective Date 12/13  
**NEW**

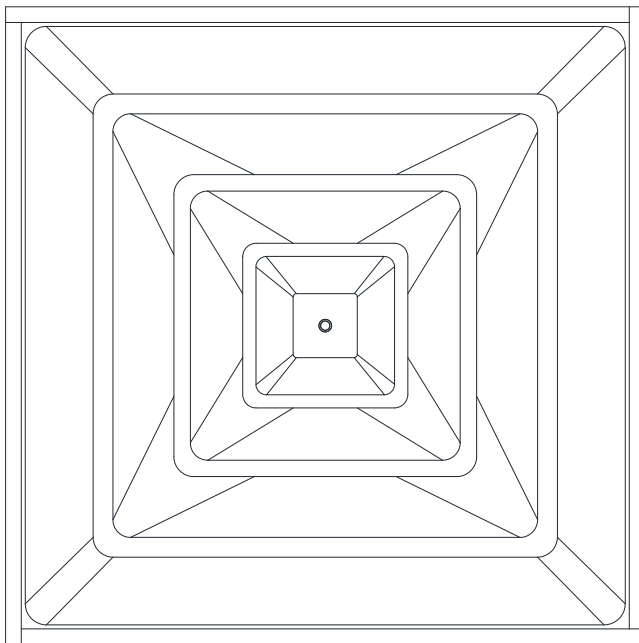


**SERIES 1400A & 51400A**  
**24"X 24" SQUARE FACE – ROUND NECK WITH R-6 INSULATION**

**CROSS SECTION**

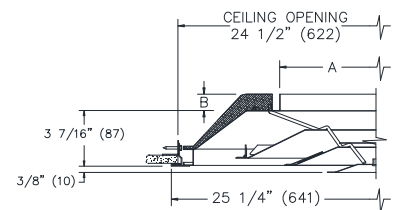


**FACE VIEW**

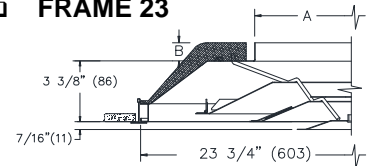


24" (610)  
 PANEL SIZE

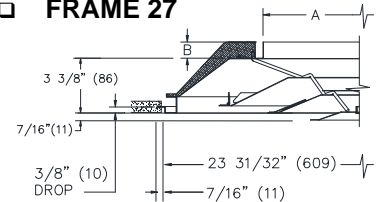
**FRAME 22**



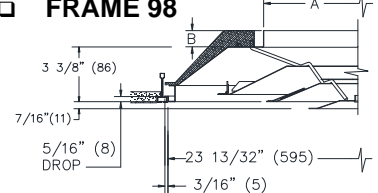
**FRAME 23**



**FRAME 27**



**FRAME 98**



**NOTES:**

1. **1400A** CONSTRUCTION IS STEEL
2. **51400A** CONSTRUCTION IS ALUMINUM
3. **R6** RIGID FOIL FACED FIBERGLASS INSULATION HAS AN R-VALUE OF 6
4. STANDARD FINISH IS 44 – BRITISH WHITE
5. EQ TABS ARE NOT ACCESSIBLE WITH INSULATION OPTION
6. INSULATION P/N: 72413401

**ACCESSORIES:**

- DAMPERS ARE TO BE ORDERED SEPARATELY

NOMINAL NECK SIZE	A	B
6	5 7/8" (149)	1" (25)
8	7 7/8" (200)	1" (25)
10	9 7/8" (251)	1 1/2" (38)
12	11 7/8" (302)	1 1/2" (38)
14	13 7/8" (353)	1 1/2" (38)
15	14 7/8" (378)	1 1/2" (38)