

JOB NAME \_\_\_\_\_  
 ARCHITECT \_\_\_\_\_  
 ENGINEER \_\_\_\_\_  
 CONTRACTOR \_\_\_\_\_  
 LOCATION \_\_\_\_\_

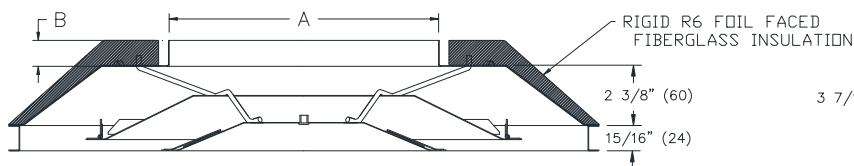
**SUBMITTALSHEET**  
 Form Number: R6004 Effective Date 10/13  
**NEW**



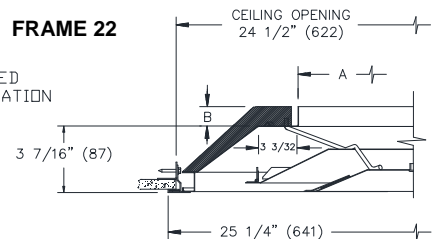
## SERIES 1450A & 51450A

### 24"x 24" SQUARE FACE – ROUND NECK WITH R-6 INSULATION

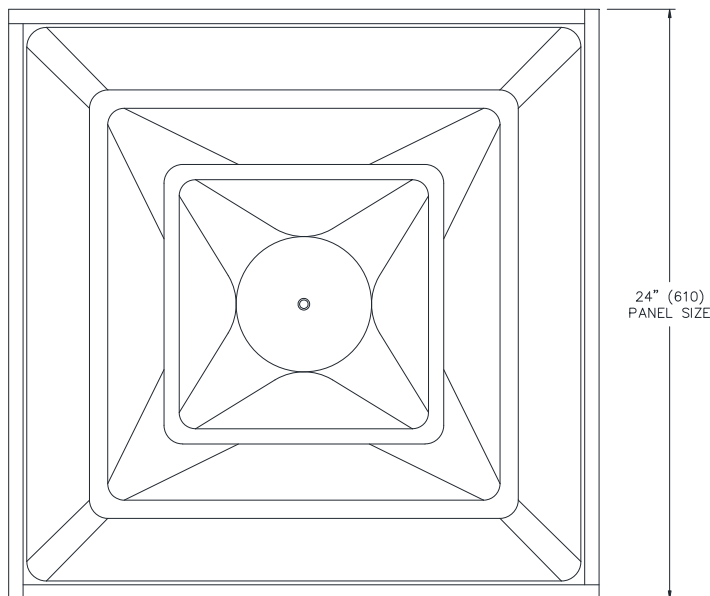
#### CROSS SECTION



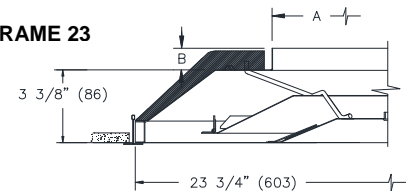
#### □ FRAME 22



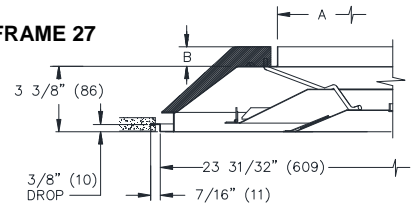
#### FACE VIEW



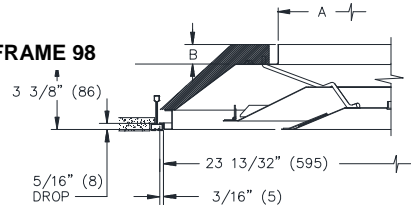
#### □ FRAME 23



#### □ FRAME 27



#### □ FRAME 98



#### NOTES:

1. **1450A** CONSTRUCTION IS STEEL
2. **51450A** CONSTRUCTION IS ALUMINUM
3. **R6** RIGID FOIL FACED FIBERGLASS INSULATION HAS AN R-VALUE OF 6
4. STANDARD FINISH IS 44 – BRITISH WHITE
5. EQ TABS ARE NOT ACCESSIBLE WITH INSULATION OPTION
6. INSULATION P/N: 72413401

#### ACCESSORIES:

- DAMPERS ARE TO BE ORDERED SEPARATELY

NOMINAL NECK SIZE	A	B
6	5 7/8" (149)	1" (25)
8	7 7/8" (200)	1" (25)
10	9 7/8" (251)	1 1/2" (38)
12	11 7/8" (302)	1 1/2" (38)
14	13 7/8" (353)	1 1/2" (38)
15	14 7/8" (378)	1 1/2" (38)