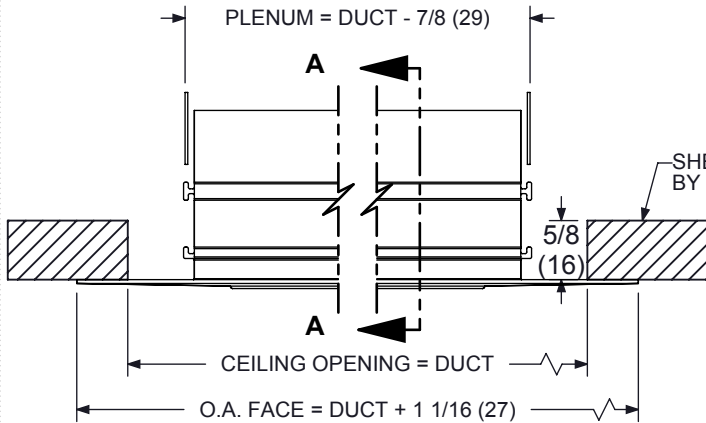


1900 SERIES LINEAR SLOT DIFFUSER

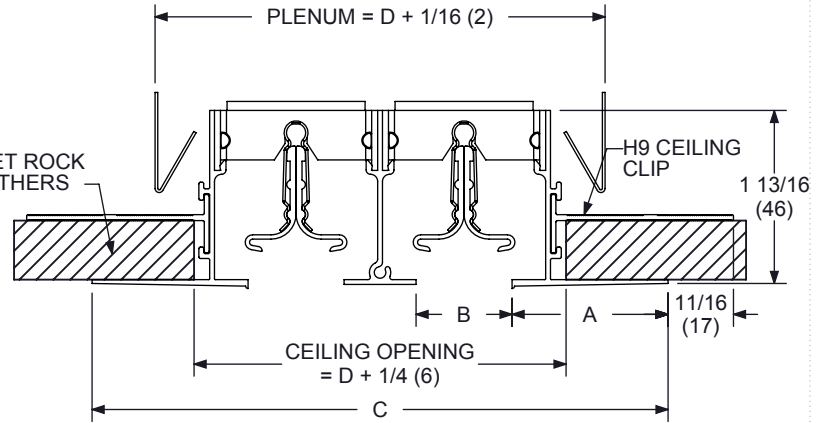
FRAME M
MUD FLANGE

JOB NAME _____
ENGINEER _____
CONTRACTOR _____
TAG _____

SUBMITTAL SHEET



SIDE VIEW



**SECTION A-A
WITH BLADES**

1975M (3/4" Spacing)				
SLOT	A	B	C	D
1	1-5/8 (41)	3/4 (19)	4 (102)	1-5/8 (41)
2	1-5/8 (41)	3/4 (19)	5-1/2 (140)	3-1/8 (79)
3	1-5/8 (41)	3/4 (19)	7 (178)	4-5/8 (117)
4	1-5/8 (41)	3/4 (19)	8-1/2 (216)	6-1/8 (156)
5	1-5/8 (41)	3/4 (19)	10 (254)	7-5/8 (194)
6	1-5/8 (41)	3/4 (19)	11-1/2 (292)	9-1/8 (232)
7	1-5/8 (41)	3/4 (19)	13 (330)	10-5/8 (270)
8	1-5/8 (41)	3/4 (19)	14-1/2 (368)	12-1/8 (308)

1910M (1" Spacing)				
SLOT	A	B	C	D
1	1-5/8 (41)	1 (25)	4-1/4 (108)	1-7/8 (48)
2	1-5/8 (41)	1 (25)	6 (152)	3-5/8 (92)
3	1-5/8 (41)	1 (25)	7-3/4 (197)	5-3/8 (137)
4	1-5/8 (41)	1 (25)	9-1/2 (241)	7-1/8 (181)
5	1-5/8 (41)	1 (25)	11-1/4 (286)	8-7/8 (225)
6	1-5/8 (41)	1 (25)	13 (330)	10-5/8 (270)
7	1-5/8 (41)	1 (25)	14-3/4 (375)	12-3/8 (314)
8	1-5/8 (41)	1 (25)	16-1/2 (419)	14-1/8 (359)

1915M (1-1/2" Spacing)				
SLOT	A	B	C	D
1	1-5/8 (41)	1-1/2 (38)	4-3/4 (121)	2-3/8 (60)
2	1-5/8 (41)	1-1/2 (38)	7 (178)	4-5/8 (117)
3	1-5/8 (41)	1-1/2 (38)	9-1/4 (235)	6-7/8 (175)
4	1-5/8 (41)	1-1/2 (38)	11-1/2 (292)	9-1/8 (232)

1920M (2" Spacing)				
SLOT	A	B	C	D
1	1-5/8 (41)	2 (51)	5-1/4 (133)	2-7/8 (73)
2	1-5/8 (41)	2 (51)	8 (203)	5-5/8 (143)
3	1-5/8 (41)	2 (51)	10-3/4 (273)	8-3/8 (213)
4	1-5/8 (41)	2 (51)	13-1/2 (343)	11-1/8 (282)

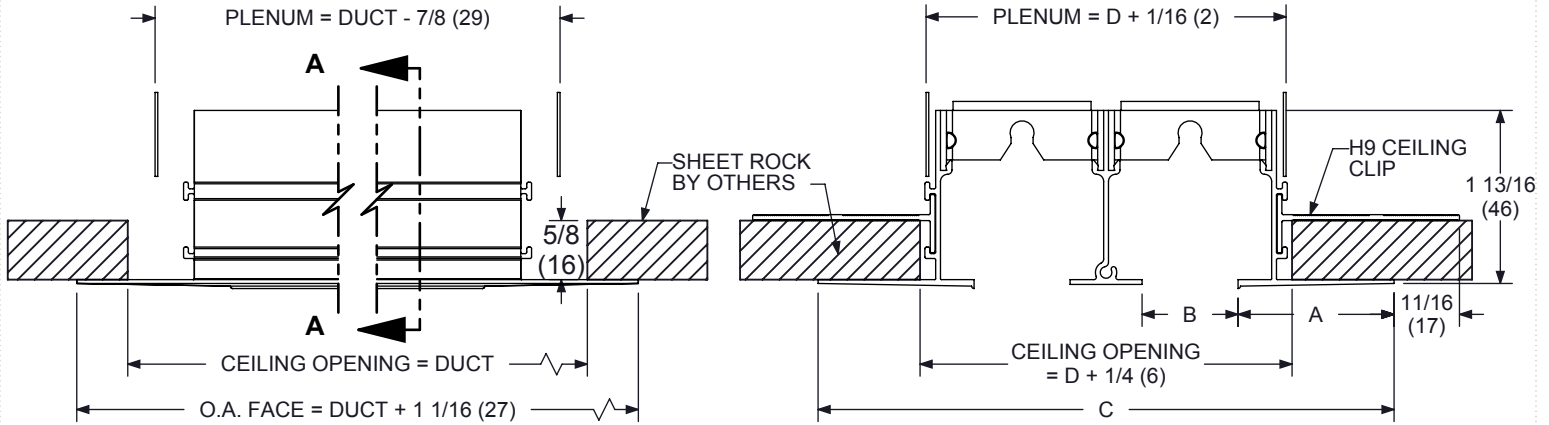
NOTES :

- Individual Sections Range from 12" (305) to 72" (1829) Long. Longer Units will Consist of Sections Butted Together with Alignment Pins
- See Form DS0710 for Length Details
- See Form DS0711 for 1900 Boot Information
- Construction is Extruded Aluminum with Steel Clip
- If an EndCap is selected, ends will always be mitered, non-removable
- Standard Finish : Straight Frame - White, Blades - Back
- Standard Finish : Curved Frame - White, Deflectors - White

OPTIONS :

- STEEL BLANK OFF STRIPS
- NO BLADES

**DIMENSIONS GIVEN AS
INCHES (MM)**



SIDE VIEW

**SECTION A-A
NO BLADES**

1975M (3/4" Spacing)				
SLOT	A	B	C	D
1	1-5/8 (41)	3/4 (19)	4 (102)	1-5/8 (41)
2	1-5/8 (41)	3/4 (19)	5-1/2 (140)	3-1/8 (79)
3	1-5/8 (41)	3/4 (19)	7 (178)	4-5/8 (117)
4	1-5/8 (41)	3/4 (19)	8-1/2 (216)	6-1/8 (156)
5	1-5/8 (41)	3/4 (19)	10 (254)	7-5/8 (194)
6	1-5/8 (41)	3/4 (19)	11-1/2 (292)	9-1/8 (232)
7	1-5/8 (41)	3/4 (19)	13 (330)	10-5/8 (270)
8	1-5/8 (41)	3/4 (19)	14-1/2 (368)	12-1/8 (308)

1910M (1" Spacing)				
SLOT	A	B	C	D
1	1-5/8 (41)	1 (25)	4-1/4 (108)	1-7/8 (48)
2	1-5/8 (41)	1 (25)	6 (152)	3-5/8 (92)
3	1-5/8 (41)	1 (25)	7-3/4 (197)	5-3/8 (137)
4	1-5/8 (41)	1 (25)	9-1/2 (241)	7-1/8 (181)
5	1-5/8 (41)	1 (25)	11-1/4 (286)	8-7/8 (225)
6	1-5/8 (41)	1 (25)	13 (330)	10-5/8 (270)
7	1-5/8 (41)	1 (25)	14-3/4 (375)	12-3/8 (314)
8	1-5/8 (41)	1 (25)	16-1/2 (419)	14-1/8 (359)

1915M (1-1/2" Spacing)				
SLOT	A	B	C	D
1	1-5/8 (41)	1-1/2 (38)	4-3/4 (121)	2-3/8 (60)
2	1-5/8 (41)	1-1/2 (38)	7 (178)	4-5/8 (117)
3	1-5/8 (41)	1-1/2 (38)	9-1/4 (235)	6-7/8 (175)
4	1-5/8 (41)	1-1/2 (38)	11-1/2 (292)	9-1/8 (232)

1920M (2" Spacing)				
SLOT	A	B	C	D
1	1-5/8 (41)	2 (51)	5-1/4 (133)	2-7/8 (73)
2	1-5/8 (41)	2 (51)	8 (203)	5-5/8 (143)
3	1-5/8 (41)	2 (51)	10-3/4 (273)	8-3/8 (213)
4	1-5/8 (41)	2 (51)	13-1/2 (343)	11-1/8 (282)

NOTES :

- Individual Sections Range from 12" (305) to 72" (1829) Long. Longer Units will Consist of Sections Butted Together with Alignment Pins
- See Form DS0710 for Length Details
- See Form DS0711 for 1900 Boot Information
- Construction is Extruded Aluminum with Steel Clips
- If an EndCap is selected, ends will always be mitered, non-removable
- Standard Finish : Straight Frame - White, Blades - Back
- Standard Finish : Curved Frame - White, Deflectors - White

OPTIONS :

- STEEL BLANK OFF STRIPS
- WITH BLADES

**DIMENSIONS GIVEN AS
INCHES (MM)**