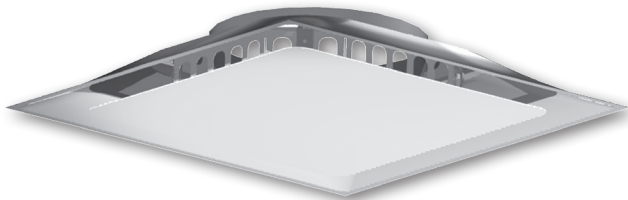




PLQIMP



PLQIMP, Angled View

Introduction: PLQIMP

The PLQIMP integrated multi-port architectural ceiling diffuser provides the building designer with the desired appearance and superior performance of a uniform radial discharge air pattern. A 360° horizontal pattern delivers even air throughout the space. The PLQIMP is designed with an integral multi-port diffusion ring to increase localized room air mixing and induction. The diffuser has a square faceplate made of one-piece, nonfolded material with rounded corners resulting in a clean appearance that is unobtrusive to ceiling systems. The single faceplate gives the diffuser reduced pressure drops and a quiet sound profile and is held in place by hooks that lock into the backpan. The one-piece, stamped backpan provides smooth, consistent corners, exacting dimensions, and performance tolerances. The removable faceplate offers easy duct and damper access.

MODELS

PLQIMP - Square Plaque-Style Ceiling Diffuser with Integrated Multi-port Ring

FEATURES

- Integral multi-port diffusion ring.
- Significantly increases room air mixing.
- Excellent choice for VAV applications.
- High induction at diffuser face.
- Low pressure drop ensures efficient system design.
- Easy removal of diffuser face for access to neck mounted dampers.

PANEL SIZE

- 24"x24" (Plaque drops 1/4" below ceiling.)

ACCESSORIES

- Dampers
- Straightening Grid

FINISHES

- Standard finish is #44 British White.
- Optional finishes available.