

Introduction: Active Chilled Beams

The *Krueger by Halton* active chilled beams are water assisted air distribution devices designed to maximize on thermal comfort, indoor air quality, and energy savings. They accomplish this through the combined use of pressurized supply air, sensible cooling or heating water coils, and induced room air.

These devices are best suited for use in areas such as office buildings, health care facilities, or any other type of building with open spaces or individual offices. Active chilled beams work in rooms with up to 12 ft. ceilings and where both heating and cooling may be needed. They are available for both lay-in and exposed mounting applications in various widths and lengths, making them a flexible option for just about any architectural preference. Low sound levels coupled with peak energy efficiency make these chilled beams the ideal choice for not only new building construction, but retrofit projects as well.

MODELS

- ASB - Active High Capacity
- ABD - Active 12" Wide Sustainable
- AHH - Active Bulkhead
- AHB - Active Bulkhead, Booster Fan
- ABH - Active Corner Mounted, Exposed
- ABX - Active 4-Way Discharge

STANDARD FEATURES

- Standard finish is Polyester Painted White (RAL 9010).
- Combined cooling and heating coil.
- 2 and 4 pipe coil configuration.
- Cooling/heating water pipe connections are copper 1/2" and 3/8" diameter, respectively.
- Aluminum fins on water coil.
- Multiple nozzle sizes available for demand based performance.
- 1-way and 2-way supply.
- Perforated, hinged access panel for easy room side access to coil.
- 20 gauge, galvanized steel casing.
- 5" diameter primary air duct connections. (6.4" on ASB, 4" on ABD)
- Low sound levels.
- *Krueger by Halton* Velocity Control (HVC). (Available on most active models)



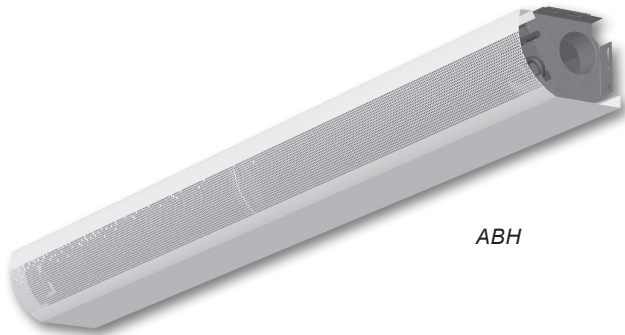
Open Office Application



Bulkhead Application

PERFORMANCE DATA:

Unlike a typical grille, register, or diffuser; chilled beams have a level of complexity which demands a more robust presentation of performance. Download KHIT, our chilled beam software, from our website at www.krueger-hvac.com. This powerful tool provides an accurate representation of a given product's performance. Each input allows you to understand the room and/or unit performance based on your exact input parameters. For further assistance in selecting or specifying *Krueger by Halton* chilled beams, contact your local representative or send us an email at kruegerinfo@krueger-hvac.com.



ABH

Introduction: ABH

The ABH exposed corner mounted chilled beam is great for smaller rooms where the supply air will only be needed in one direction, such as a hotel room or office. This product has several options available to meet different engineering requirements and building needs.

MODEL

ABH - Active Corner Mounted Exposed

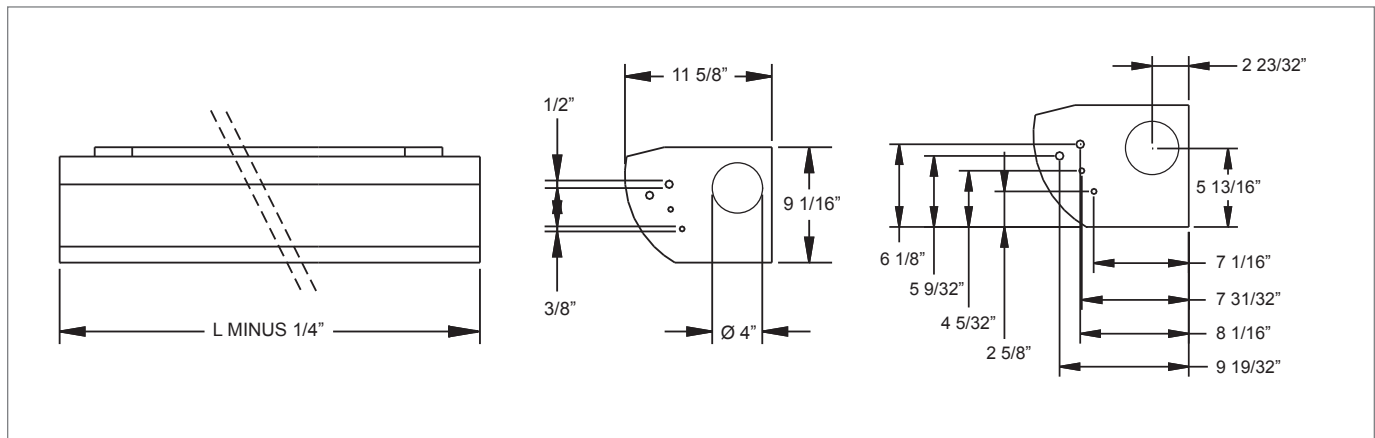
FEATURED OPTIONS

(See **STANDARD OPTIONS** on Page C3-17)

- 2 nozzle sizes available.
- Available in lengths from 72" to 196" (4" increments).
- Same side or opposite side of supply air, water coil connections.
- Venting valves for cooling and/or heating coil.
- Custom color matching available.
- Duct cover upon request (32" - 100" in 4" increments).

ABH Dimensional Information

ABH DUCT & SIDE VIEWS



NOTES: All dimensions in inches. Cooling/heating water pipe connections are copper 1/2" and 3/8" with a wall thickness of 0.04". The maximum operating pressure of chilled/hot water pipework is 150 psi.

ABH Suggested Specification & Configuration**ABH**

The active chilled beam shall have an integral recirculation air path through the perforated front panel.

The supply airflow rate shall be manually adjustable using an airflow damper. The hinged front panel can easily be opened and detached for general maintenance and cleaning. The bottom panel shall be removable without any special tools.

The supply air to the room space shall be 1-way.

The active chilled beam shall be 12" wide and 9" high. The active chilled beam shall have an inlet duct diameter of 4".

All exterior panels shall be made of galvanized steel. All visible parts shall be white, painted to #44 White (RAL 9010), 20% gloss.

All pipes shall be manufactured from copper, and connection pipes with a wall thickness of 0.04". The fins shall be manufactured from aluminum. Coil fins shall be spaced at 6 FPI. Optionally, heating shall be incorporated within the heat exchanger by means of two 3/8" pipes, connected in series.

All joints shall be soldered and factory pressure-tested. The pipework's maximum operation pressure is 150 psi.

Active chilled beams shall be protected by a removable plastic coating and individually packed in a plastic bag. The duct connection and pipe ends shall remain sealed during transport.

The active chilled beams shall be identified by a serial number printed on a label attached to the beam.

- 1. MODEL: (XXX)**
ABH - Active Corner Mounted, Exposed Chilled Beam
- 2. AIR PATTERN / NOZZLE TYPE: (X)**
F - 1-Way / Right / Nozzle 3
K - 1-Way / Left / Nozzle 3
G - 1-Way / Right / Nozzle 4
M - 1-Way / Left / Nozzle 4
- 3. DUCT CONNECTION : (XXX)**
S1N - Straight / 4" / Without Damper
- 4. BEAM LENGTH: (XXX)**
72" - 196" (Increments of 4")
- 5. COIL LENGTH: (XXX)**
XXX - Beam Length <= 116",
59" - 116" (Increments of 4") *
XXX - Beam Length >= 120",
57" - 183" (Increments of 4") *
- 6. COIL CONNECTION LOCATION: (X)**
S - Straight
O - Opposite
- 7. COIL TYPE: (X)**
C - Cooling Only
H - Cooling and Heating
D - Cooling Only, Venting Valves
F - Cooling and Heating, Venting Valves
- 8. FINISH: (XXX)**
WHT - White (RAL-9010)
BLK - Black
GRY - Gray
SPL - Special

* Maximum Coil Length is Beam Length less 13".

CHILLED BEAMS

A
B
H

SAMPLE CONFIGURATION: ABH - M - S1N - 80 - 59 - O - H - BLK