

Introduction: Passive Chilled Beams

The *Krueger by Halton* passive chilled beams are the perfect solution for perimeter zone cooling or complementary cooling in areas such as open office spaces or hallways. Due to their silent operation, they are a great fit for libraries and classrooms as well. Using only a cooling coil, passive chilled beams provide sensible cooling for a space, making them a great fit for retrofit applications or where additional sensible cooling may be necessary due to changes in room layout and demand. Because the passive beams do not receive any ventilation air from an air handler or VAV terminal unit, they use a negligible amount of energy, making them an energy efficient alternative for space cooling.

MODELS

APA - Passive, Exposed Chilled Beam

APT - Passive, Above Ceiling Mount Chilled Beam

STANDARD FEATURES

- Standard finish is Polyester Painted White (RAL 9010, APA Only).
- Pre-painted sheet metal, modular perforated screen with 50% free area (APA only).
- Steel outer mounted end cap (APA only).
- Galvanized steel side panels (APT only).
- 1/2" diameter copper coiling coil pipes.
- Aluminum fins on water coil.
- Low sound levels.



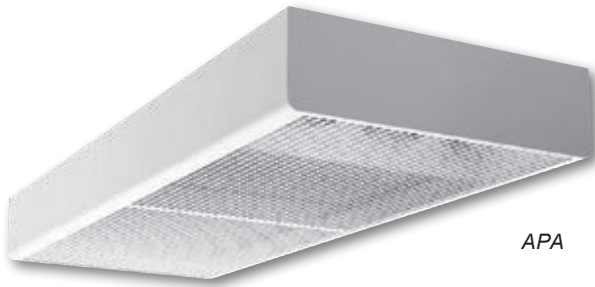
Retail Application

CHILLED BEAMS

P
A
S
S
I
V
E

PERFORMANCE DATA:

Unlike a typical grille, register, or diffuser; chilled beams have a level of complexity which demands a more robust presentation of performance. Download KHIT, our chilled beam software, from our website at www.krueger-hvac.com. This powerful tool provides an accurate representation of a given product's performance. Each input allows you to understand the room and/or unit performance based on your exact input parameters. For further assistance in selecting or specifying *Krueger by Halton* chilled beams, contact your local representative or send us an email at kruegerinfo@krueger-hvac.com.



APA

Introduction: APA

The APA exposed chilled beam is the perfect solution for spaces requiring sensible cooling loads where ceiling space may be limited. Additionally, the aesthetics of this chilled beam make it a great choice for architects.

MODEL

APA - Passive Exposed Chilled Beam

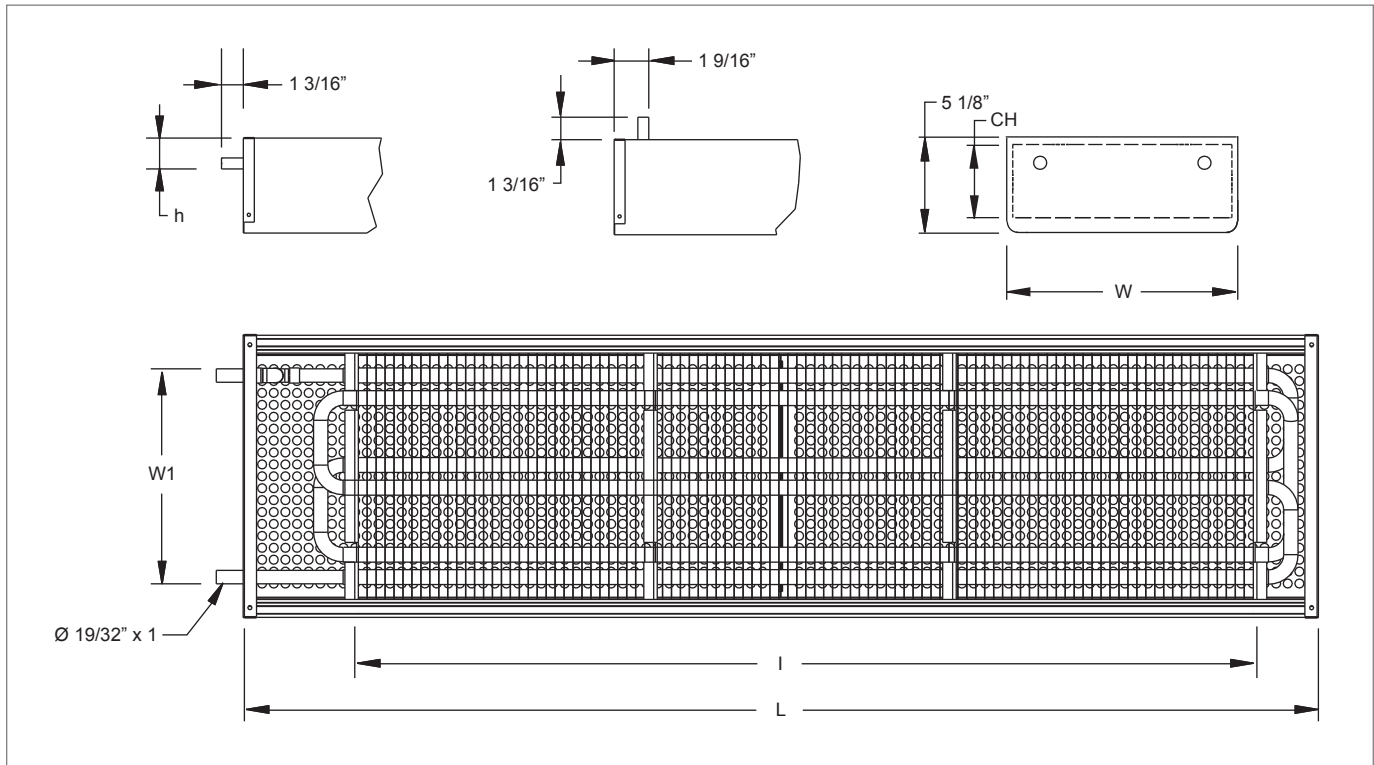
FEATURED OPTIONS

(See STANDARD OPTIONS on Page C3-37)

- 3" or 4" coil height.
- Available in lengths from 48" to 200" (4" increments).
- 12", 18", or 24" unit width.
- 1 or 2 loop water coil.
- Custom color matching available.
- Front or top coil connection.
- Factory mounted 2-way control valve.
- Rounded or angular edges on casing.

APA Dimensional Data

APA TOP & SIDE VIEWS



APA DIMENSIONAL REFERENCES

W	CH	h	W1	I	L
12"	3"	1 19/32"	9"	40" - 189"	I + 8"
18"			15"		
24"			21"		
12"	4"	1 3/16"	9"	40" - 189"	I + 8"
18"			15"		
24"			21"		

APA

© KRUEGER 2012