



AFD

### Introduction: AFD

The *Krueger by Halton* AFD provides a 180° discharge pattern making it ideal for auditoriums, classrooms, retail centers, and offices. The triangular design works well where seamless diffuser integration into a sensitive architectural space is required. The detachable face facilitates easy cleaning of the internal baffle.

#### MODEL

AFD - Rounded Triangle, Low-Velocity Supply Unit

#### FEATURES

- 20 gage front panel.
- Horizontal low velocity discharge at floor level.
- Flow pattern at an angle of 180° enables large airflow rates with low residual velocities in the occupied zone.
- Detachable front panel and removable baffle enables cleaning of the unit and duct work.
- Round duct connection with integral gasket on top or bottom.

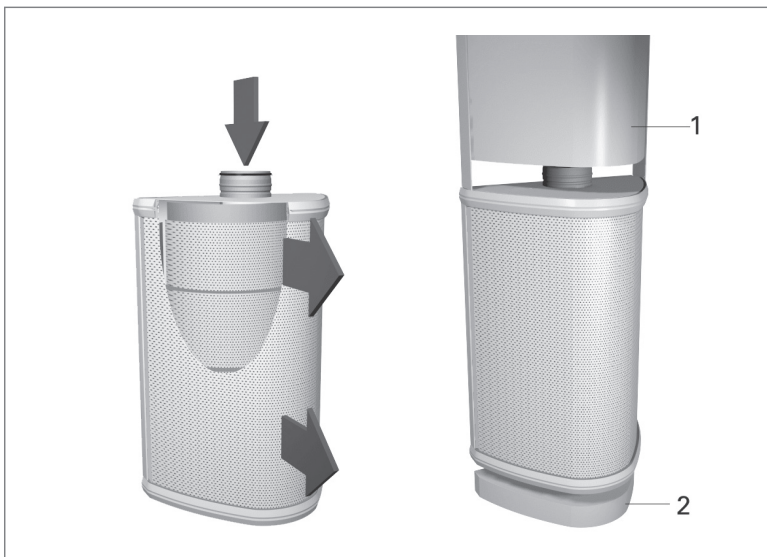
#### OPTIONS

- Stainless steel (AISI 316) design.
- 16 gage front panel.
- Duct cover (solid or perforated).
- Installation base (2", 4", 6").
- Vinyl trim in white or black.
- Metal trim (painted to match).

#### FINISHES

- Standard is Polyester Painted White (RAL 9010).
- Custom colors available.

### AFD Application



#### FUNCTION

Air is discharged into the space through the front panel of the unit, normally at a slightly lower temperature than setpoint.

The supply air flows at floor level and gradually pervades through the occupied space before rising due to the convection of warm surfaces.

The low velocity flow pattern is semi-circular (180°).

*NOTES: The flow pattern data has been defined for floor installation. (1) Duct cover is for covering the duct work and is optional. (2) Installation base is used to raise the unit off the floor and is also optional.*