

CRFF SERIES

Fan Filter Unit

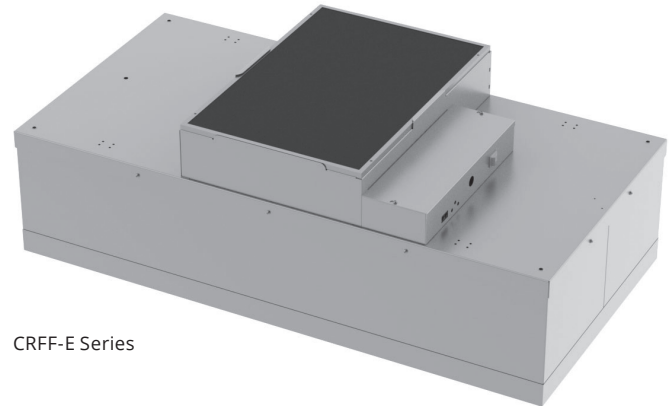


INTRODUCTION

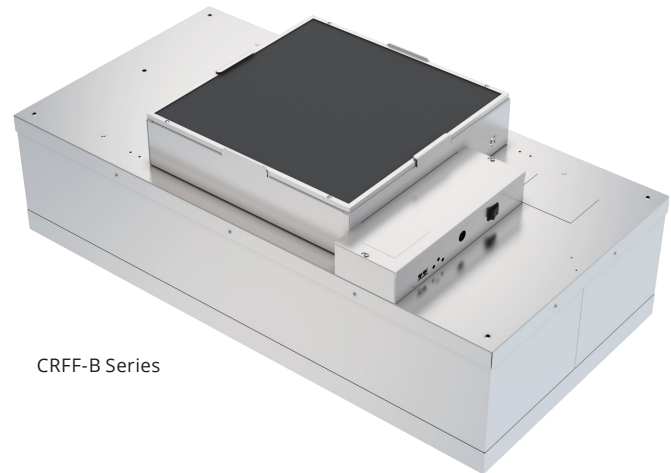
Krueger's CRFF, CRFF-E, CRFF-B, CRFF-L series of critical room fan filter units are intended for environments that demand the highest levels of cleanliness such as laboratories, clean rooms and microprocessor assembly areas. Each unit contains an integral HEPA filter for improving contaminant and particulate removal from supply air. These devices combine quiet operation, low power consumption and a space saving low profile design to meet a variety of applications. Additionally, these devices are modular and can be used in nominally sized 24" x 24" and 24" x 48" grid systems.

MODELS

- | | | |
|-------------|---|---|
| CRFF | - | Critical Room Fan Filter with HEPA Filter |
| CRFF-ARS | - | Critical Room Fan Filter with HEPA Filter and Room Side Access |
| CRFF-ARSM | - | Critical Room Fan Filter with HEPA Filter and Room Side Access to PSC Motor and Filter |
| CRFF-E | - | Critical Room Fan Filter with HEPA Filter, ECM Motor, and Forward Inclined Fan |
| CRFF-E-ARS | - | Critical Room Fan Filter with HEPA Filter, ECM Motor, Forward Inclined Fan, and Room Side Access |
| CRFF-E-ARSM | - | Critical Room Fan Filter with HEPA Filter and Room Side Access to ECM Motor, Forward Inclined Fan, and Filter |
| CRFF-E-ARSC | - | Critical Room Fan Filter with HEPA Filter and Room Side Access to ECM Motor and Controls, Forward Inclined Fan, and Filter |
| CRFF-B | - | Critical Room Fan Filter with HEPA Filter, ECM Motor, and Backward Inclined Fan |
| CRFF-B-ARS | - | Critical Room Fan Filter with HEPA Filter, ECM Motor, Backward Inclined Fan, and Room Side Access |
| CRFF-B-ARSM | - | Critical Room Fan Filter with HEPA Filter and Room Side Access to ECM Motor, Backward Inclined Fan, and Filter |
| CRFF-B-ARSC | - | Critical Room Fan Filter with HEPA Filter and Room Side Access to ECM Motor and Controls, Backward Inclined Fan, and Filter |
| CRFF-L | - | Critical Room Fan Filter with HEPA Filter, PSC Motor, Backward Inclined Fan, Low Energy, Low Profile, High Airflow |
| CRFF-L-ARSM | - | Critical Room Fan Filter with HEPA Filter and Room Side Access to PSC Motor, Backward Inclined Fan, and Filter, Low Energy, Low Profile, High Airflow |



CRFF-E Series



CRFF-B Series

FEATURES

- Space saving low profile design, less than 13" in height (CRFF only).
- PSC motor with solid state speed control or 3-speed switch.
- Forward or backward inclined centrifugal-type fan.
- High Efficiency Particulate Air (HEPA) Filter: 99.99% @ 0.3 micron, Type J.
- Low power consumption.
- Snap-in prefilter.
- Walkable plenum (excluding prefilter).
- Available in 24" x 24" or 24" x 48".
- ECM Brushless DC Motor: Constant airflow over a wide range of external static pressures. *
- Challenge and pressure ports. **
- 1/2 - 20 threaded bushings (located on casing).
- ECM motor with universal control card: VCU *
- Meets IEST-RP CC001.5 and IEST-RP-CC0034.3 leak testing.
- UL listed with Standard UL 900.
- Combinations of Mill and White are available. See Engineering Specifications for options.

* Feature applies to CRFF-E, CRFF-E-ARS, CRFF-E-ARSM, CRFF-E-ARSC, CRFF-B, CRFF-B-ARS, CRFF-B-ARSM, and CRFF-B-ARSC Series only.

** Feature applies to CRFF-ARS, CRFF-ARSM, CRFF-E-ARS, CRFF-E-ARSM, CRFF-E-ARSC, CRFF-B-ARS, CRFF-B-ARSM, and CRFF-B-ARSC Series only.

OPTIONS

- Ultra-Low Penetration Air (ULPA) Filter: 99.9995% @ 0.12 micron, Type F
- Loose shipped filters
- Continuous filter monitoring
- Filter Indicator Light **
- Run Indicator Light **
- Insulation
- A/C Collar: Allows direct connection to air conditioning supply
- Stainless steel or extruded aluminum plaster frame for hard ceilings
- 304 stainless steel construction
- Power Cord: Provides convenient plug-in (Voids UL listing.)
- Infrared Speed Control: Room-side airflow adjustment with hand-held remote control (ECM motors only)
- Challenge and pressure ports on non-ARS units
- Wall mounted control enclosure (ECM motors only)

APPLICATION

Constant Volume Airflow

The CRFF-E and CRFF-B series of critical room fan filter units contain an electronically commutative (ECM) brushless DC motor which delivers constant airflow by adjusting the motor rpm or torque. The adjustment compensates for changes in static pressure, filter loading or other local conditions, which reduces the need for post installation adjustments.

Filter Options and Accessibility

With the ARS option, the perforated face can be removed for periodic cleaning, HEPA filters are easily accessible and replaceable from the room side. Utilizing industry proven gel seal filter technology these units possess an integral continuous knife edge that penetrates the filter's gel filled pocket, delivering a leak proof sealed unit. The HEPA filter is protected by an expanded metal face that minimizes unnecessary or accidental contact with the filter media. To increase particulate removal, a ULPA filter is available.