



**RPN**  
This round punkah nozzle features a surface mounting frame.



**CRNRR, 5CRNRR**  
These concentric ring nozzles feature a stub duct mounting frame for smaller duct work



**RPNRD**  
This round punkah nozzle features a stub duct mounting frame.



**CRNP, 5CRNP**  
These products feature a surface mounting frame with two round concentric ring nozzles.



**RPNRR**  
This round punkah nozzle features a stub duct mounting frame for smaller duct work.



**CRNLP, 5CRNLP**  
This product features a lay-in T-bar frame with one round concentric ring nozzle



**RPN2P**  
This product features a surface mounting frame with two round punkah nozzles.



**R580, R5880**  
These round single and double deflection grilles feature a concealed mounting frame.



**RPN4P**  
This product features a surface mounting frame with four round punkah nozzles.



**R580RD, R5880RD**  
These round single and double deflection grilles feature a round duct adapter frame.



**RPNLP**  
This product features a lay-in T-bar frame with one round punkah nozzle.



**R580RR, R5880RR**  
These round single and double deflection grilles feature a duct reducing mounting frame for smaller duct work.



**K-JET**  
This round jet nozzle mounts to a ceiling tile and supplies a non-adjustable jet of air.



**REGC5**  
These round egg-crate grilles feature a round duct adapter.



**K-JET**  
This round jet nozzle mounts to a ceiling tile and supplies a non-adjustable jet of air.



**REGC5RD**  
These round egg-crate grilles feature a duct reducing mounting frame for smaller duct work.



**CRN, 5CRN**  
These concentric ring nozzles feature a surface mounting frame.



**REGC5RR**  
These round egg-crate grilles feature a duct reducing mounting frame for smaller duct work.



**CRNRD, 5CRNRD**  
These concentric ring nozzles feature a stub duct mounting frame.

**RPN Series**

Introduction & Dimensional Information....H1-3  
Reference Chart & Performance Data .....H1-8  
Engineering Specifications.....H1-10

**K-JET, K-JETA**

Introduction .....H1-12  
Dimensional Information .....H1-13  
Reference Chart ..... H1-13  
Performance Data.....H1-14  
Engineering Specifications.....H1-16

**CRN, 5CRN Series**

Introduction & Dimensional Information....H1-17  
Reference Chart.....H1-23  
Performance Data.....H1-24  
Engineering Specifications.....H1-29

**R580, R5880 Series**

Introduction & Dimensional Information....H1-31  
Reference Chart.....H1-34  
Performance Data.....H1-35  
Engineering Specifications.....H1-39

**REGC5 Series**

Introduction & Dimensional Information....H1-41  
Reference Chart.....H1-44  
Performance Data.....H1-45  
Engineering Specifications.....H1-49

## Introduction: REGC5

Designed for surface mount applications, this round architectural return or non-adjustable supply grille provides aesthetically appeal and are well suited for architectural, commercial and industrial applications.

### MODEL

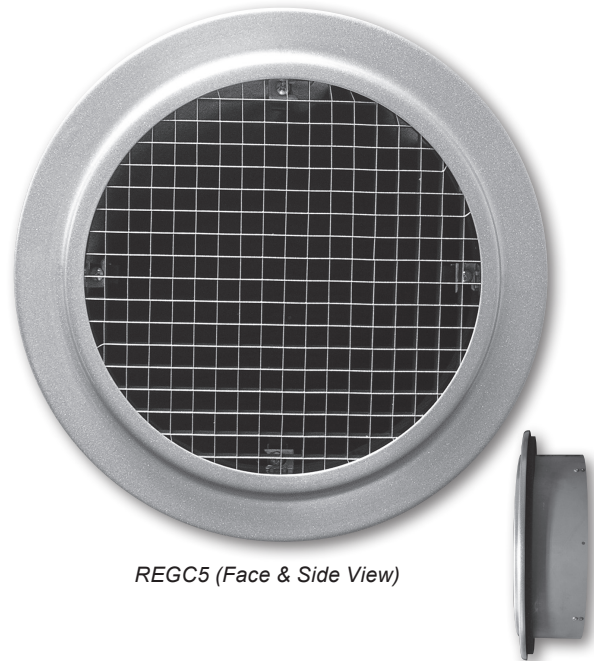
REGC5 - Aluminum, Round Egg-Crate, Round Duct Adaptor

### FEATURES

- Aluminum construction.
- Round 1/2"x1/2"x1/2" egg-crate grille.
- For use in surface mount applications.
- Flex duct mounting frame available.
- Concealed mounting system standard.

### FINISHES

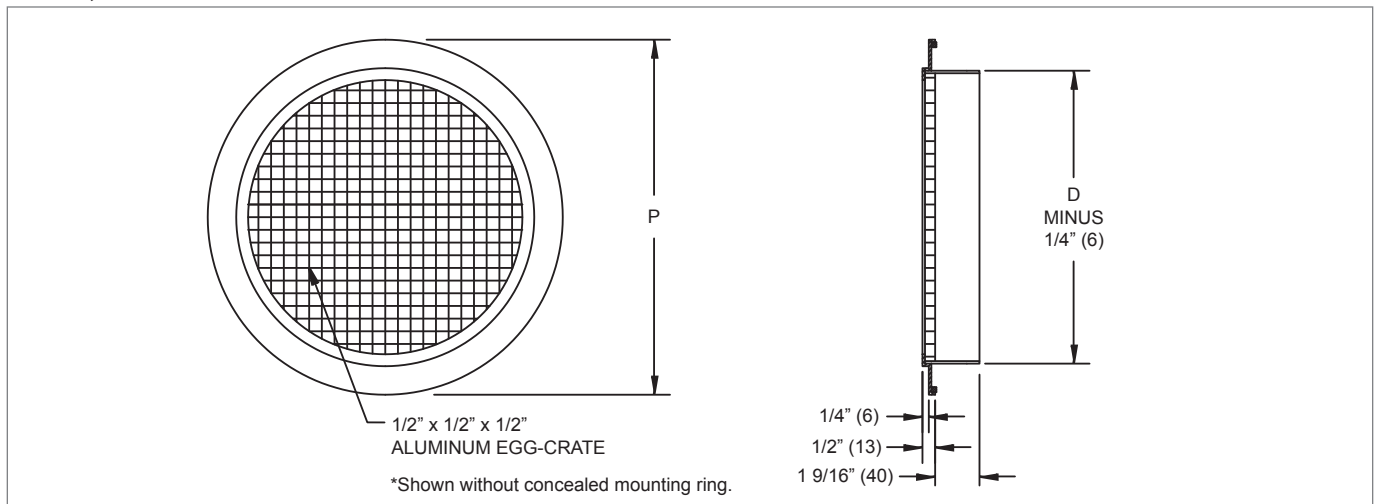
- Standard finish is #70 Silver Metallic.
- Optional finishes available.



REGC5 (Face & Side View)

## REGC5 Dimensional Information

### REGC5, FACE AND SIDE VIEWS



### REGC5, DIMENSIONAL DETAILS

Nominal Size	Duct D	P
6	6" (152)	8 1/4" (210)
8	8" (203)	10 1/4" (260)
10	10" (254)	12 1/4" (311)
12	12" (305)	14 1/4" (362)
14	14" (356)	16 1/4" (413)
16	16" (406)	18 1/4" (464)
18	18" (457)	20 1/4" (514)
20	20" (508)	22 1/4" (565)
22	22" (559)	24 1/4" (616)
24	24" (610)	26 1/4" (667)
30	30" (762)	32 1/4" (819)

NOTE: Dimensions in parentheses are mm.



REGC5RD (Face & Side View)

**Introduction: REGC5RD**

Designed to fit cleanly over the end of spiral or round duct work, this round architectural return or non-adjustable supply grille with an integrated round duct adaptor works great in exposed duct applications.

**MODEL**

REGC5RD - Aluminum, Round Egg-Crate, Round Duct Reducer

**FEATURES**

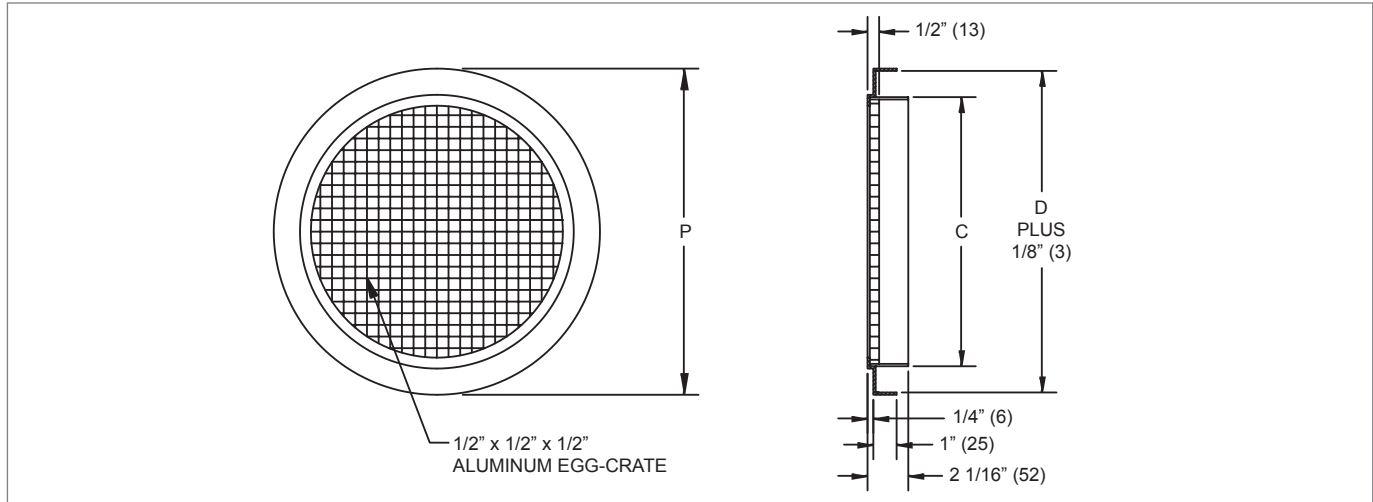
- Aluminum construction.
- Round 1/2"x1/2"x1/2" egg-crate grille.
- For use in exposed duct mount applications.
- Frame slides cleanly over end of exposed duct.

**FINISHES**

- Standard finish is #70 Silver Metallic.
- Optional finishes available.

**REGC5RD Dimensional Information**

**REGC5RD, FACE AND SIDE VIEWS**



**REGC5RD, DIMENSIONAL DETAILS**

Nominal Size *	Core Size C	Duct D	P
6	5 5/8" (143)	8" (203)	8 1/4" (210)
8	7 5/8" (194)	10" (254)	10 1/4" (260)
10	9 5/8" (244)	12" (305)	12 1/4" (311)
12	11 5/8" (295)	14" (356)	14 1/4" (362)
14	13 5/8" (346)	16" (406)	16 1/4" (413)
16	15 5/8" (397)	18" (457)	18 1/4" (464)
18	17 5/8" (448)	20" (508)	20 1/4" (514)
20	19 5/8" (498)	22" (559)	22 1/4" (565)
22	21 5/8" (549)	24" (610)	24 1/4" (616)
24	23 5/8" (600)	26" (660)	26 1/4" (667)
30	29 5/8" (752)	32" (813)	32 1/4" (819)

NOTES: Dimensions in parentheses are mm.

\* The nominal size is 2" (51) smaller than the duct size to which it mounts. Example: A size 10 mounts on a 12" (305) duct.

### Introduction: REGC5RR

The architectural round return or non-adjustable supply grilles with an integrated round duct reducer are designed to fit cleanly inside the end of spiral or round duct runs, which makes it a great choice for exposed duct applications.

#### MODEL

REGC5RR - Aluminum, Round Egg-Crate, Round Duct Adaptor

#### FEATURES

- Aluminum construction.
- Round 1/2"x1/2"x1/2" egg-crate grille.
- For use in exposed duct mount applications.
- Frame slides cleanly into end of exposed duct.

#### FINISHES

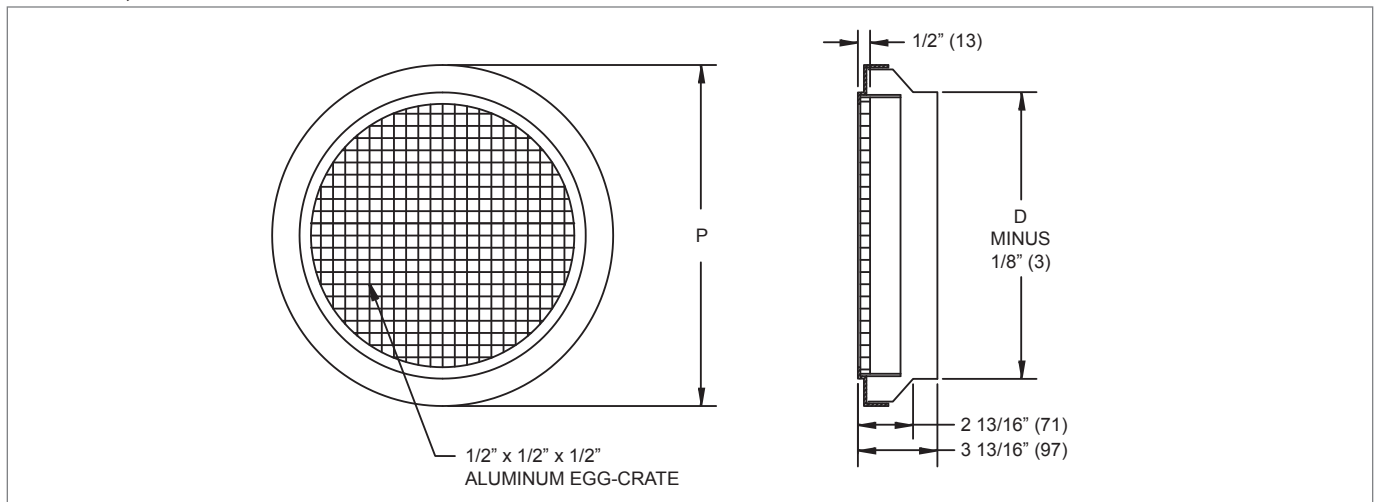
- Standard finish is #70 Silver Metallic.
- Optional finishes available.



REGC5RR (Face & Side View)

### REGC5RR Dimensional Information

#### REGC5RR, FACE AND SIDE VIEWS



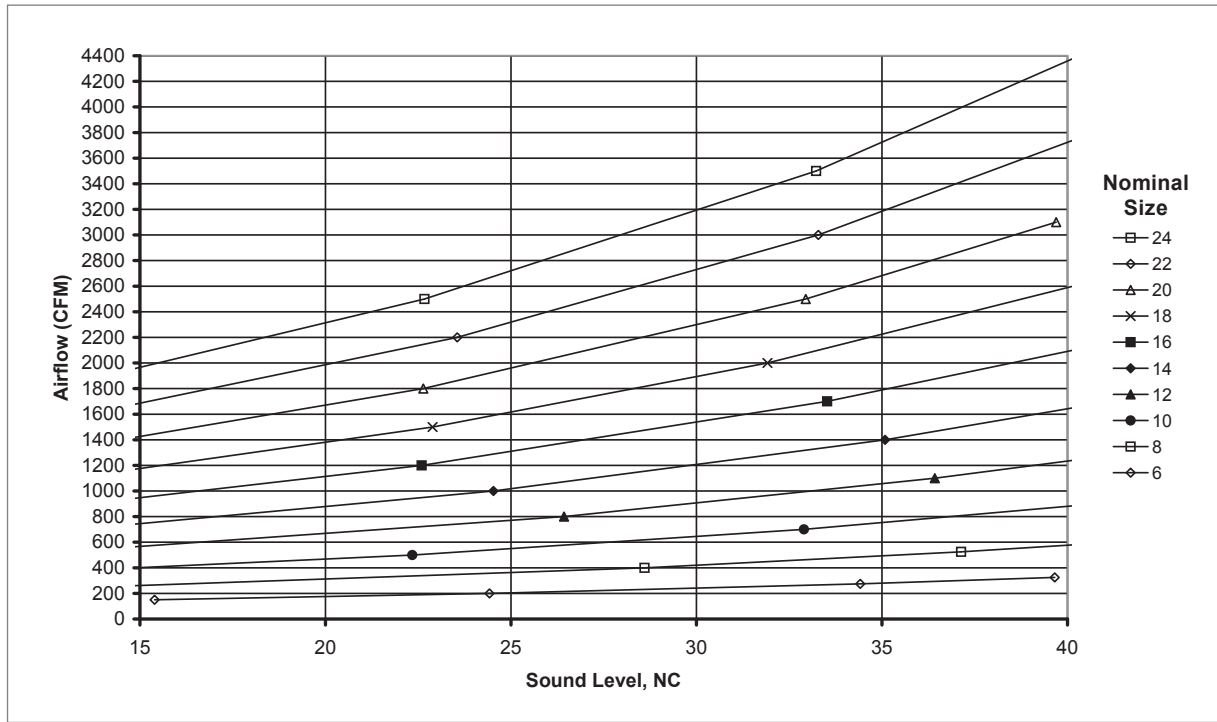
#### REGC5RR, DIMENSIONAL DETAILS

Nominal Size	Duct D	P
6	6" (152)	8 1/4" (210)
8	8" (203)	10 1/4" (260)
10	10" (254)	12 1/4" (311)
12	12" (305)	14 1/4" (362)
14	14" (356)	16 1/4" (413)
16	16" (406)	18 1/4" (464)
18	18" (457)	20 1/4" (514)
20	20" (508)	22 1/4" (565)
22	22" (559)	24 1/4" (616)
24	24" (610)	26 1/4" (667)

NOTE: Dimensions in parentheses are mm.

**REGC5, REGC5RD, REGC5RR Supply Series Reference Chart**

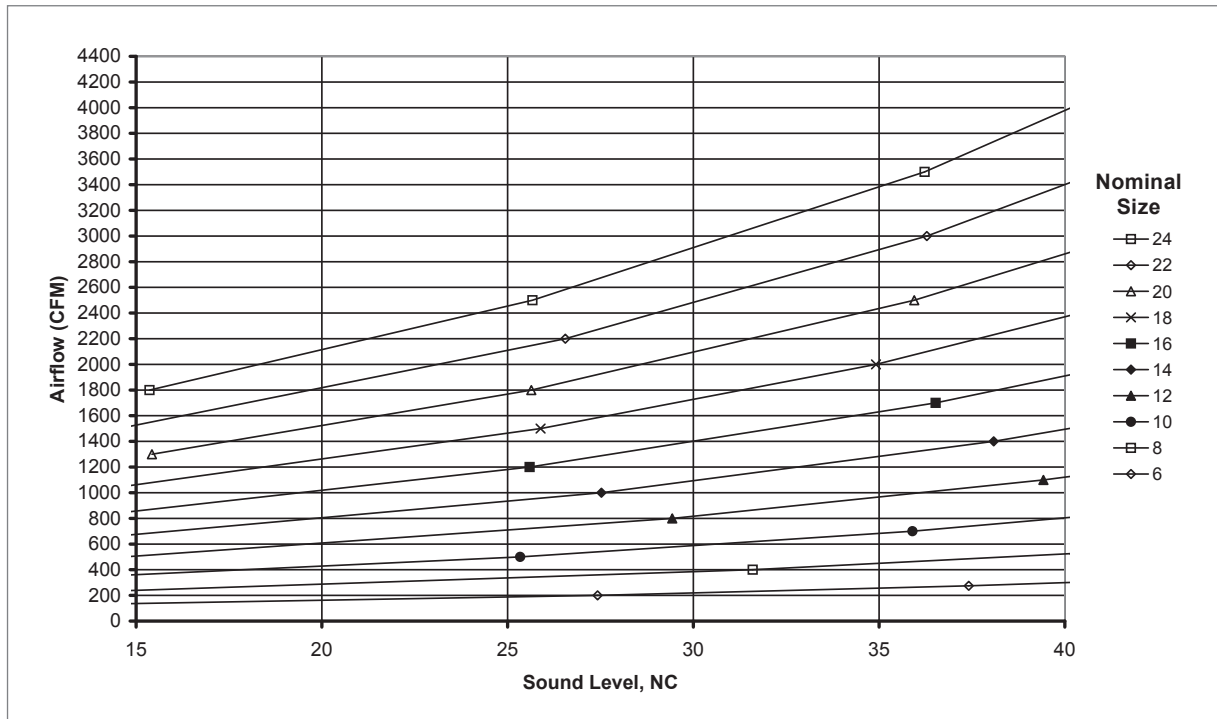
AIRFLOW VS. NC: REGC5, REGC5RD, REGC5RR



NOTE: Size 30 not charted.

**REGC5, REGC5RD, REGC5RR Return Series Reference Chart**

AIRFLOW VS. NC: REGC5, REGC5RD, REGC5RR



NOTE: Size 30 not charted.

AIR NOZZLES & ROUND GRILLES

REGC5



**REGC5, REGC5RR Return Performance Data**

IP/METRIC DATA: REGC5, REGC5RR

IP		Metric Data					Octave Band									
Duct Size	Duct Area	Duct Vel.	Air Flow	Pt	NC	Duct Size	Duct Area	Duct Vel.	Air Flow	Pt	2	3	4	5	6	7
in	ft <sup>2</sup>	FPM	CFM	"WG		mm	m <sup>2</sup>	m/s	L/s	Pa						
6	0.196	382	75	.037	-	152	0.018	1.94	35	9.2	34	16	13	12	-	-
		637	125	.103	13			3.24	59	25.6	41	29	25	24	24	19
		1019	200	.264	27			5.18	94	65.6	48	41	37	36	38	38
		1402	275	.498	37			7.12	130	124.1	52	49	44	44	47	50
		1656	325	.696	43			8.41	153	173.3	55	53	49	48	52	57
8	0.349	430	150	.047	-	203	0.032	2.18	71	11.7	38	20	17	16	13	-
		645	225	.106	14			3.28	106	26.3	43	30	27	26	25	20
		1147	400	.334	32			5.83	189	83.1	51	45	41	40	42	42
		1505	525	.575	40			7.65	248	143.1	55	52	47	47	50	53
		1720	600	.751	44			8.74	283	186.9	57	55	51	50	54	58
10	0.545	367	200	.034	-	254	0.051	1.86	94	8.5	37	17	14	13	-	-
		642	350	.105	14			3.26	165	26.1	45	31	28	27	26	20
		917	500	.214	25			4.66	236	53.2	50	40	36	35	36	34
		1284	700	.419	36			6.52	330	104.2	54	49	45	44	46	47
		1651	900	.692	44			8.39	425	172.3	58	55	51	50	53	57
12	0.785	382	300	.037	-	305	0.073	1.94	142	9.2	39	19	16	15	12	-
		637	500	.103	15			3.24	236	25.6	46	32	29	27	26	21
		1019	800	.264	29			5.18	378	65.6	53	44	40	39	40	39
		1402	1100	.498	39			7.12	519	124.1	57	52	48	47	50	51
		1593	1250	.644	43			8.09	590	160.3	59	55	51	50	53	56
14	1.068	374	400	.036	-	356	0.099	1.90	189	8.9	40	20	17	15	12	-
		609	650	.094	14			3.09	307	23.4	47	32	29	27	26	20
		936	1000	.222	28			4.76	472	55.4	53	43	39	38	39	36
		1311	1400	.436	38			6.66	661	108.5	57	51	47	46	48	49
		1591	1700	.643	44			8.08	802	160.0	60	56	52	51	54	57
16	1.395	358	500	.033	-	406	0.130	1.82	236	8.1	40	19	17	15	11	-
		609	850	.094	15			3.09	401	23.4	48	33	29	28	27	20
		860	1200	.188	26			4.37	566	46.7	52	41	38	37	37	34
		1218	1700	.377	37			6.19	802	93.8	57	50	46	45	47	47
		1505	2100	.575	43			7.65	991	143.1	60	55	51	51	53	55
18	1.766	396	700	.040	-	457	0.164	2.01	330	9.9	43	23	20	18	15	-
		595	1050	.090	15			3.02	496	22.3	48	33	30	28	27	20
		849	1500	.183	26			4.32	708	45.6	53	42	38	37	37	34
		1133	2000	.325	35			5.75	944	81.0	57	49	45	44	46	45
		1472	2600	.550	43			7.48	1227	137.0	61	56	52	51	53	55
20	2.180	367	800	.034	-	508	0.203	1.86	378	8.5	42	21	19	17	13	-
		596	1300	.090	15			3.03	614	22.5	49	34	30	29	28	21
		826	1800	.173	26			4.19	850	43.1	54	42	38	37	37	33
		1147	2500	.334	36			5.83	1180	83.1	58	50	46	45	47	46
		1422	3100	.513	43			7.22	1463	127.7	61	56	51	51	53	55
22	2.638	341	900	.030	-	559	0.245	1.73	425	7.4	42	20	18	16	12	-
		569	1500	.082	15			2.89	708	20.4	49	33	30	29	27	19
		834	2200	.176	27			4.24	1038	43.9	54	43	39	38	38	34
		1137	3000	.328	36			5.78	1416	81.7	59	51	47	46	47	46
		1441	3800	.526	44			7.32	1793	131.1	62	57	52	52	54	56
24	3.139	319	1000	.026	-	610	0.292	1.62	472	6.4	42	19	17	15	11	-
		573	1800	.083	15			2.91	850	20.8	50	34	31	29	28	20
		796	2500	.161	26			4.05	1180	40.1	55	42	39	38	37	33
		1115	3500	.315	36			5.66	1652	78.5	59	51	47	46	47	46
		1433	4500	.521	44			7.28	2124	129.8	63	57	53	52	55	56
30	4.905	306	1500	.024	-	762	0.456	1.55	708	5.9	43	20	17	15	11	-
		612	3000	.095	19			3.11	1416	23.6	53	37	34	33	31	24
		815	4000	.169	28			4.14	1888	42.0	57	45	41	40	40	35
		1019	5000	.264	35			5.18	2360	65.6	60	50	46	45	46	44
		1223	6000	.380	41			6.21	2832	94.5	62	55	51	50	52	51

NOTES: NC values are based on octave band 2 - 7 sound power levels minus a room absorption 10dB, re 10<sup>-12</sup> Watts. Dash in space denotes a NC value less than 10. Data was obtained from tests conducted in accordance with ANSI/ASHRAE Standard 70. \* Size 30 (face size) available in model REGC5 only.

AIR NOZZLES & ROUND GRILLES

REGC5

© KRUEGER 2012





**REGC5RD Return Performance Data**

**IP/METRIC DATA: REGC5RD**

IP		NC	Metric Data					Octave Band								
Duct Size	Duct Area		Duct Vel.	Air Flow	Pt	Duct Size	Duct Area	Duct Vel.	Air Flow	Pt	2	3	4	5	6	7
in	ft <sup>2</sup>		FPM	CFM	"WG	mm	m <sup>2</sup>	m/s	L/s	Pa						
6	0.349	215	75	.023	-	152	0.032	1.09	35	5.6	34	16	13	12	-	-
		358	125	.063	13			1.82	59	15.6	41	29	25	24	24	19
		573	200	.160	27			2.91	94	39.9	48	41	37	36	38	38
		788	275	.303	37			4.01	130	75.4	52	49	44	44	47	50
		932	325	.423	43			4.73	153	105.4	55	53	49	48	52	57
8	0.545	275	150	.037	-	203	0.051	1.40	71	9.2	38	20	17	16	13	-
		413	225	.083	14			2.10	106	20.7	43	30	27	26	25	20
		734	400	.263	32			3.73	189	65.4	51	45	41	40	42	42
		963	525	.452	40			4.89	248	112.6	55	52	47	47	50	53
		1101	600	.591	44			5.59	283	147.1	57	55	51	50	54	58
10	0.785	255	200	.032	-	254	0.073	1.29	94	7.9	37	17	14	13	-	-
		446	350	.097	14			2.27	165	24.1	45	31	28	27	26	20
		637	500	.198	25			3.24	236	49.3	50	40	36	35	36	34
		892	700	.388	36			4.53	330	96.6	54	49	45	44	46	47
		1147	900	.641	44			5.83	425	159.6	58	55	51	50	53	57
12	1.068	281	300	.038	-	305	0.099	1.43	142	9.6	39	19	16	15	12	-
		468	500	.107	15			2.38	236	26.6	46	32	29	27	26	21
		749	800	.273	29			3.80	378	68.1	53	44	40	39	40	39
		1030	1100	.517	39			5.23	519	128.7	57	52	48	47	50	51
		1170	1250	.667	43			5.94	590	166.2	59	55	51	50	53	56
14	1.395	287	400	.040	-	356	0.130	1.46	189	10.0	40	20	17	15	12	-
		466	650	.106	14			2.37	307	26.3	47	32	29	27	26	20
		717	1000	.250	28			3.64	472	62.4	53	43	39	38	39	36
		1003	1400	.491	38			5.10	661	122.2	57	51	47	46	48	49
		1218	1700	.724	44			6.19	802	180.2	60	56	52	51	54	57
16	1.766	283	500	.039	-	406	0.164	1.44	236	9.7	40	19	17	15	11	-
		481	850	.113	15			2.45	401	28.1	48	33	29	28	27	20
		680	1200	.225	26			3.45	566	56.1	52	41	38	37	37	34
		963	1700	.452	37			4.89	802	112.5	57	50	46	45	47	47
		1189	2100	.689	43			6.04	991	171.7	60	55	51	51	53	55
18	2.180	321	700	.050	-	457	0.203	1.63	330	12.5	43	23	20	18	15	-
		482	1050	.113	15			2.45	496	28.2	48	33	30	28	27	20
		688	1500	.231	26			3.50	708	57.5	53	42	38	37	37	34
		917	2000	.410	35			4.66	944	102.2	57	49	45	44	46	45
		1193	2600	.693	43			6.06	1227	172.6	61	56	52	51	53	55
20	2.638	303	800	.045	-	508	0.245	1.54	378	11.2	42	21	19	17	13	-
		493	1300	.118	15			2.50	614	29.5	49	34	30	29	28	21
		682	1800	.227	26			3.47	850	56.5	54	42	38	37	37	33
		948	2500	.438	36			4.81	1180	109.0	58	50	46	45	47	46
		1175	3100	.673	43			5.97	1463	167.6	61	56	51	51	53	55
22	3.139	287	900	.040	-	559	0.292	1.46	425	10.0	42	20	18	16	12	-
		478	1500	.111	15			2.43	708	27.7	49	33	30	29	27	19
		701	2200	.239	27			3.56	1038	59.6	54	43	39	38	38	34
		956	3000	.445	36			4.85	1416	110.8	59	51	47	46	47	46
		1210	3800	.714	44			6.15	1793	177.9	62	57	52	52	54	56
24	3.684	271	1000	.036	-	610	0.342	1.38	472	8.9	42	19	17	15	11	-
		489	1800	.116	15			2.48	850	29.0	50	34	31	29	28	20
		679	2500	.224	26			3.45	1180	55.9	55	42	39	38	37	33
		950	3500	.440	36			4.83	1652	109.5	59	51	47	46	47	46
		1221	4500	.727	44			6.20	2124	181.1	63	57	53	52	55	56
30	5.581	269	1500	.035	-	762	0.518	1.37	708	8.8	43	20	17	15	11	-
		538	3000	.141	19			2.73	1416	35.1	53	37	34	33	31	24
		717	4000	.250	28			3.64	1888	62.4	57	45	41	40	40	35
		896	5000	.391	35			4.55	2360	97.4	60	50	46	45	46	44
		1075	6000	.563	41			5.46	2832	140.3	62	55	51	50	52	51

NOTES: NC values are based on octave band 2 - 7 sound power levels minus a room absorption 10dB, re 10<sup>-12</sup> Watts. Dash in space denotes a NC value less than 10. Data was obtained from tests conducted in accordance with ANSI/ASHRAE Standard 70.

AIR NOZZLES & ROUND GRILLES

REGC5

© KRUEGER 2012

**REGC5, REGC5RD, REGC5RR Suggested Specification & Configuration**
**1. SERIES: (XXXXXXX)**

- REGC5 - Aluminum, Round Egg-Crate, Concealed Mount
- REGC5RD - Aluminum, Round Egg-Crate, Round Duct Adaptor
- REGC5RR - Aluminum, Round Egg-Crate, Round Duct Reducer

**2. SIZE: (XX) \***

- 06 - 6" Unit Size
- 08 - 8" Unit Size
- 10 - 10" Unit Size
- 12 - 12" Unit Size
- 14 - 14" Unit Size
- 16 - 16" Unit Size
- 18 - 18" Unit Size
- 20 - 20" Unit Size
- 22 - 22" Unit Size
- 24 - 24" Unit Size
- 30 - 30" Unit Size\*

**3. FINISH: (XX)**

- 01 - Mill
- 36 - Black
- 44 - British White
- 50 - Bright White
- 61 - Gray Prime
- 70 - Silver Metallic
- 99 - Custom Color

\* Unit and duct sizes are not the same for model REGC5RD.

\*\* Model REGC5RR not available in size 30.

**REGC5**

The round egg-crate grille shall be a Krueger model REGC5. This grille must have 1/2"x1/2"x1/2" aluminum core. The flange of the REGC5 shall be made of aluminum and have a minimum thickness of .072". A foam gasket on the reverse side of the flange shall be provided by the manufacturer. The round egg-crate grille shall have a concealed mounting system that includes a separate duct mounting ring. Screw holes on the face of the unit are not acceptable.

**REGC5RD**

The round egg-crate grille shall be a Krueger model REGC5RD. This grille must have 1/2"x1/2"x1/2" aluminum core. The flange of the REGC5RD shall be made of aluminum and have a minimum thickness of .072". The round egg-crate grille shall slide cleanly over the end of exposed duct work and be secured with screws provided by the manufacturer. The screws shall mount to the side of the grille. Screw holes on the face of the unit are not acceptable.

**REGC5RR**

The round egg-crate grille shall be a Krueger model REGC5RR. This grille must have 1/2"x1/2"x1/2" aluminum core. The flange of the REGC5RR shall be made of aluminum and have a minimum thickness of .072". The round egg-crate grille shall slide cleanly into end of exposed duct work and be secured with screws provided by the manufacturer. The screws shall mount to the side of the grille. Screw holes on the face of the unit are not acceptable.

**PERFORMANCE**

The manufacturer shall provide published performance data for the grille. The grille shall be tested in accordance to the data standards at the time of product introduction or ANSI/ASHRAE Standard 70.

**FINISH**

The paint finish shall be #70 Silver Metallic and be a P-Series Powder Coating finish, baked at 400°F for 7 minutes. The paint thickness shall be 1.8 – 2.2 mils, pencil hardness per ASTM D3363 of H – 2H, crosshatch adhesion per ASTM D3359 of 4B, impact per ASTM D2794 of direct and reverse impact range of 40 to 160 in/lb depending on formulation, salt spray per ASTM B117 of 1000 hours, humidity per ASTM D2247 of 1000 hours and water soak per ASTM D8702 of 500 hours.