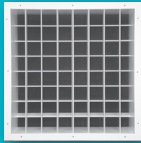


**680 & 5680**

These industrial supply grilles feature adjustable, single deflection, extruded aluminum airfoil blades with a steel or extruded aluminum frame. Horizontal or vertical blades at 1 1/4", 2", or 3" spacing available.



**6880 & 56880**

These industrial supply grilles feature adjustable, double deflection, extruded aluminum airfoil blades with a steel or extruded aluminum frame. Horizontal or vertical front blades at 1 1/4", 2", or 3" spacing available.



**680MP & 5680MP**

These industrial supply grilles feature fully adjustable extruded aluminum front blades with pole operated rear blades, with a steel or extruded aluminum frame. Horizontal or vertical front blades at 3/4" spacing.



**DPL**

This industrial supply drum louver features extruded aluminum, rear hinged vanes, aluminum frame, and up to 60° of rotation.



**DPL2**

This industrial supply drum louver features extruded aluminum, rear hinged, split vanes, an aluminum frame, and up to 60° of rotation.

**680, 5680, 6880, 56880, 680MP, 5680MP**

Introduction ..... M1-3  
 Dimensional Data..... M1-4  
 Reference Charts..... M1-8  
 Performance Data..... M1-11  
 Engineering Specifications..... M1-23

**DPL, DPL2**

Introduction & Dimensional Data ..... M1-25  
 Pattern Selection & Detail..... M1-26  
 Heavy Duty Damper (Model DOBHD) ..... M1-27  
 Reference Charts..... M1-28  
 Performance Data..... M1-30  
 Engineering Specification ..... M1-34

**Introduction: 680, 6880, 680MP Series —**

The 680/6880 series industrial grilles feature aluminum extruded airfoil blades enhancing the look and performance of the grille. The 680/6880 blade spacing ranges from 1 1/4" to 3" resulting in single section airflow ranges from 75 CFM to 7,200 CFM. Multi-section construction allows for an unlimited airflow range. These grilles are an excellent choice for large room applications where high volumes of air are required.

**MODEL**

- 680 - Single Deflection Industrial Supply Grille with Steel Frame Construction
- 5680 - Single Deflection Industrial Supply Grille with Extruded Aluminum Frame Construction
- 6880 - Double Deflection Industrial Supply Grille with Steel Frame Construction
- 56880 - Double Deflection Industrial Supply Grille with Extruded Aluminum Frame Construction
- 680MP - Industrial Supply Grille with Fully Adjustable Front Blades and Pole Operated Rear Blades with Steel Frame Construction
- 5680MP - Industrial Supply Grille with Fully Adjustable Front Blades and Pole Operated Rear Blades with Extruded Aluminum Frame Construction

**FEATURES**

- Extruded aluminum blades.
- Border: 1 1/4".
- Blade Spacing: 1 1/4", 2", or 3" (680, 5680, 6880, and 56880 only); 3/4" front and 1" rear (680MP and 5680MP only).

**ACCESSORY**

- Heavy Duty Damper (Model OBDHD)\*
- Steel Opposed Blade Damper (Model OBD)\*\*
- Steel Painted Opposed Blade Damper (Model POBD)\*\*
- Aluminum Opposed Blade Damper (Model 5OBD)\*\*

**FINISHES**

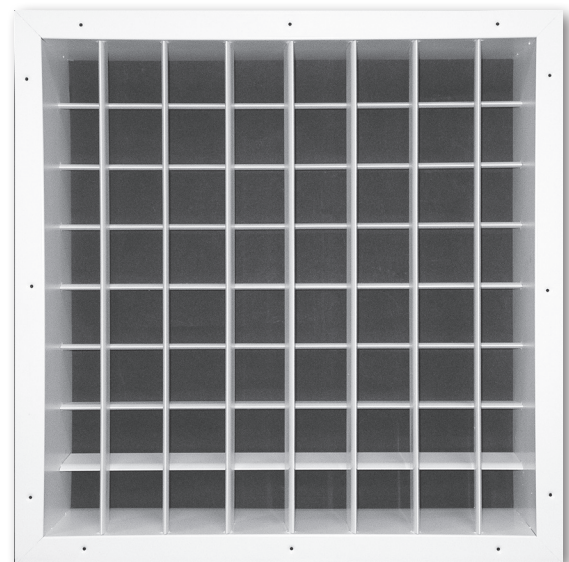
- Standard finish is #44 British White.
- Optional finishes available.

\* Accessory available with 680, 5680, 6880, 56880 Series only.

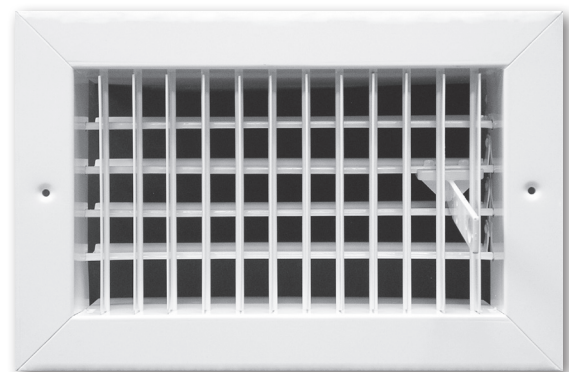
\*\* Accessory available with 680MP, 5680MP Series only.



680



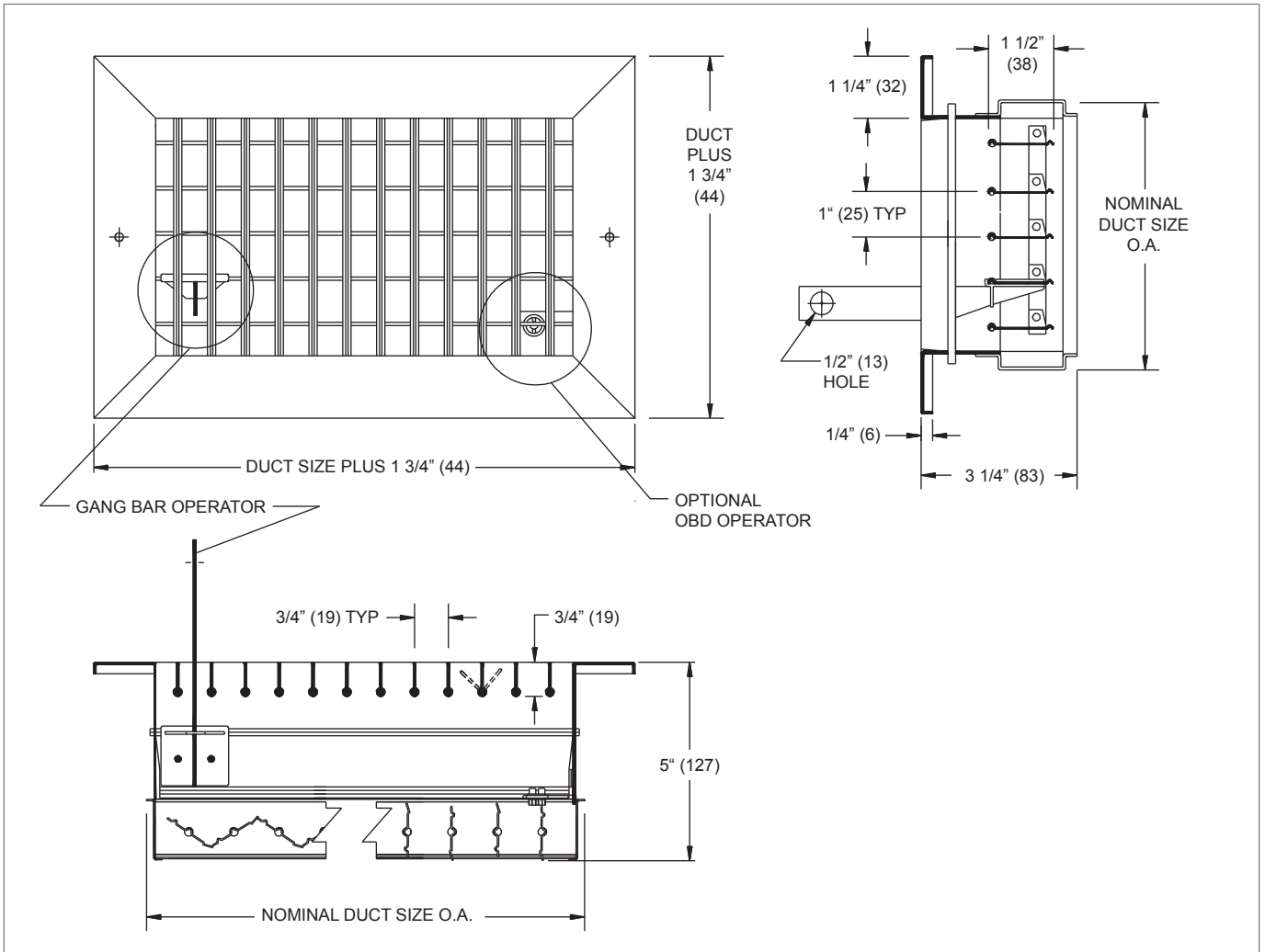
6880



680MP

**680MP, 5680MP Dimensional Data**

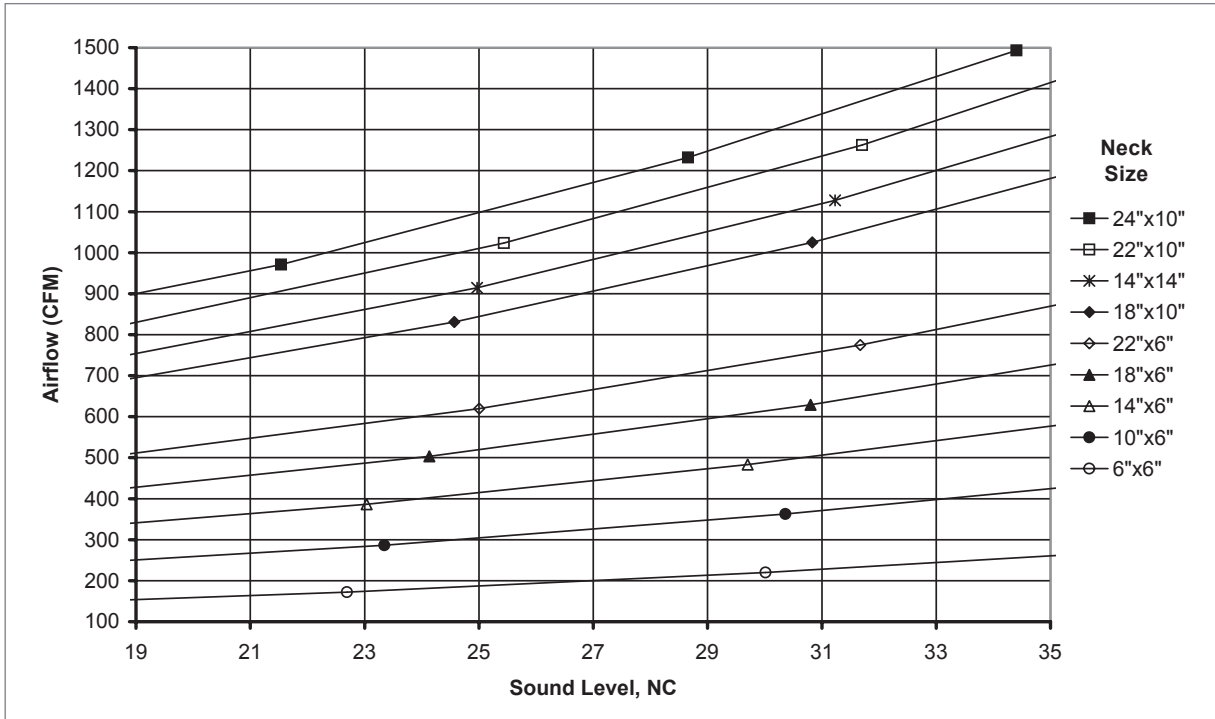
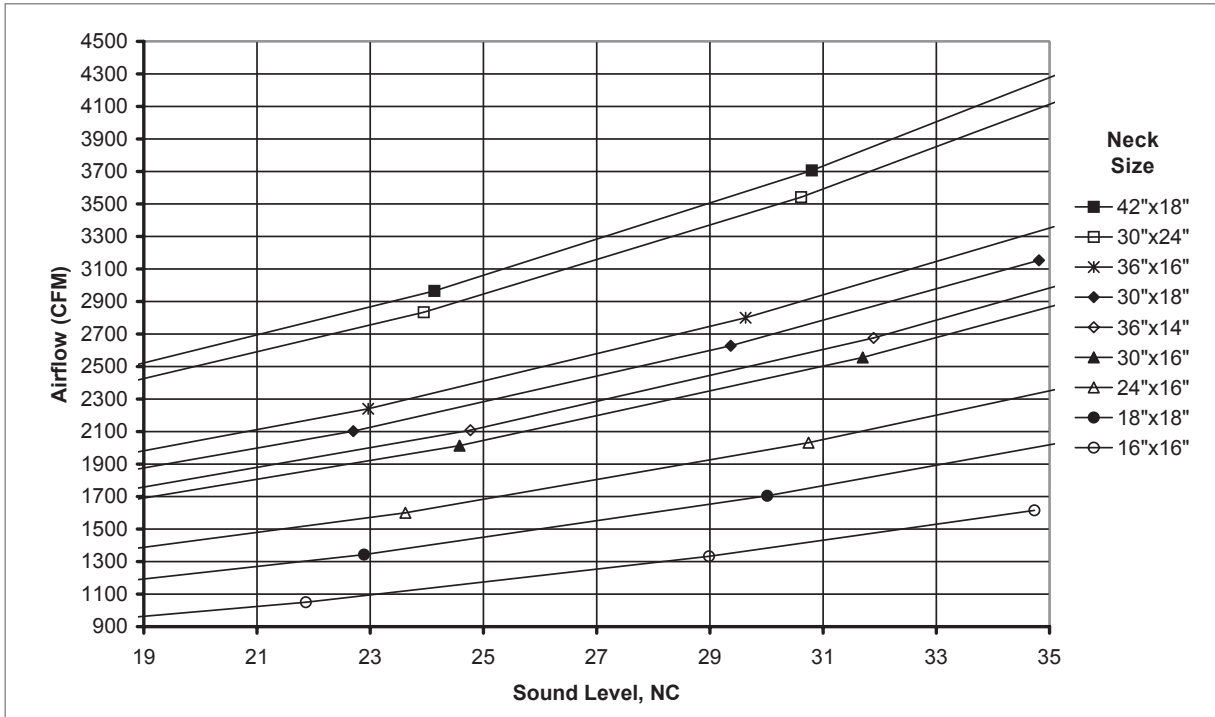
**680MP, 5680MP, 3/4" BLADE SPACING: FACE VIEW, SIDE VIEW, & CROSS SECTIONS**



NOTES: Dimensions in parentheses are mm. See Supply Grille section on page I1-49 for reference charts and performance data.

INDUSTRIAL GRILLES

680MP - 5680MP

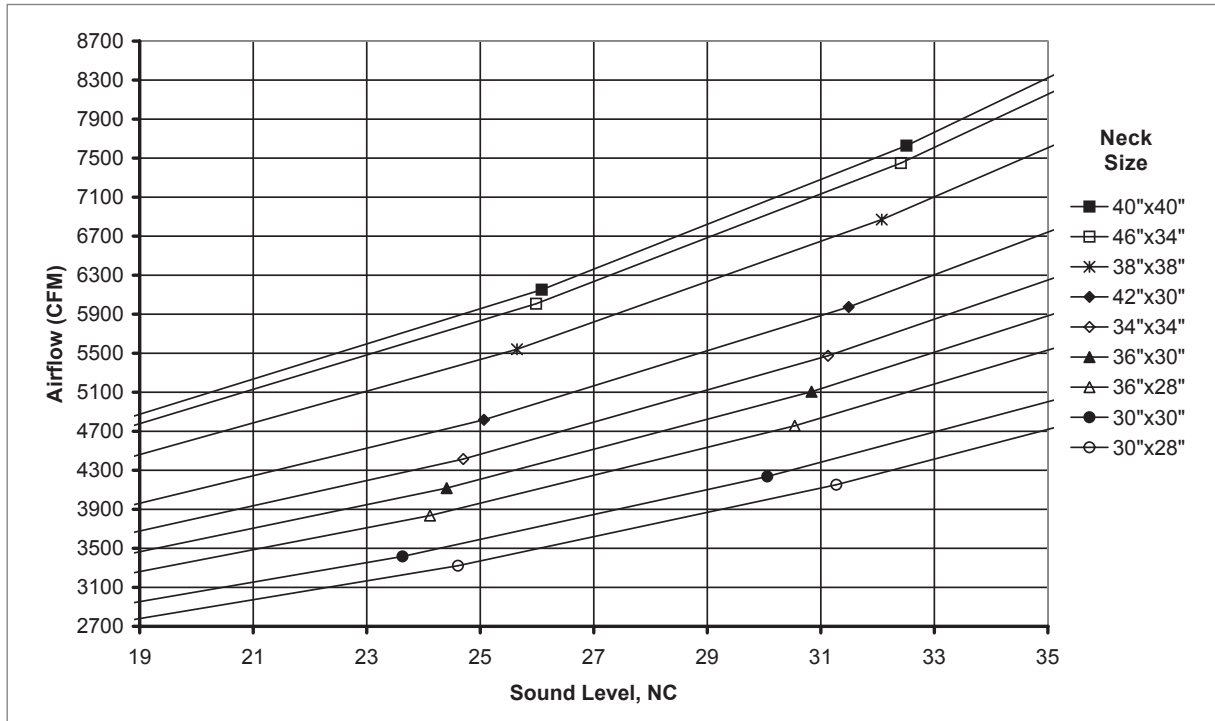
**AF80, AF580, AF880, AF5880 Reference Charts**
**AIRFLOW VS. NC: AF80, AF580, AF880, AF5880 (NO DAMPER)**

**AIRFLOW VS. NC: AF80, AF580, AF880, AF5880 (NO DAMPER)**


SUPPLY GRILLES

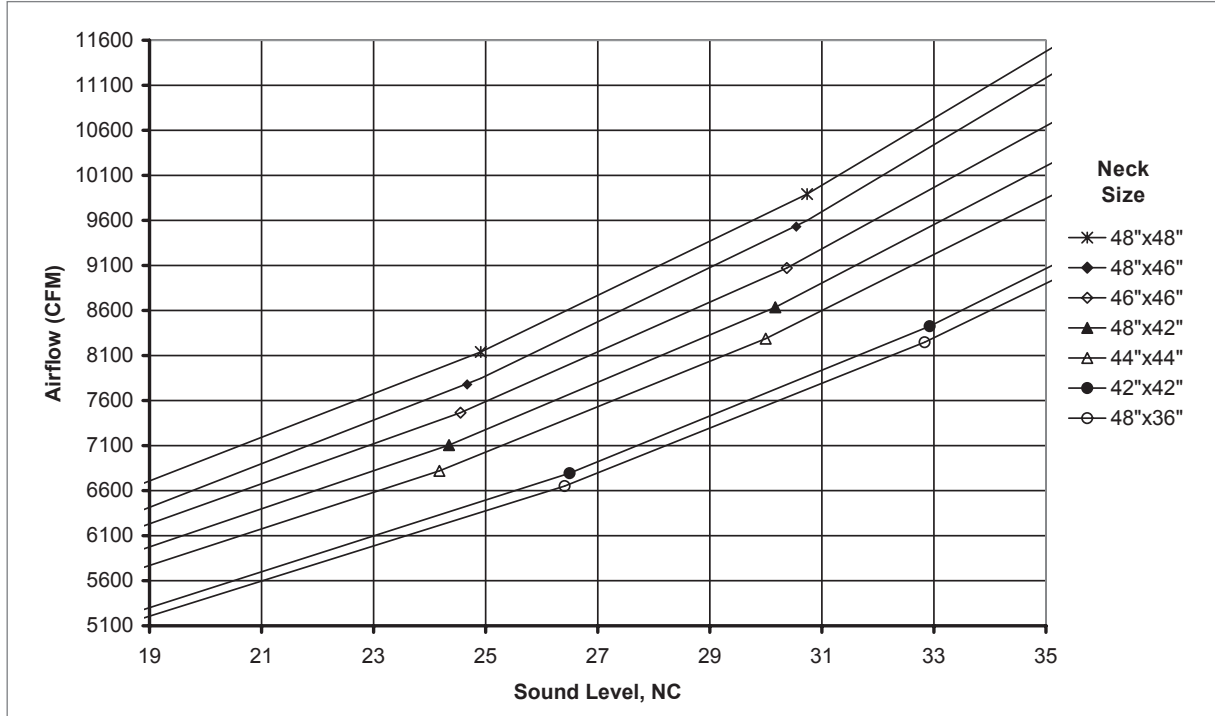
AF80 - AF880

**AF80, AF580, AF880, AF5880 Reference Charts**

**AIRFLOW VS. NC: AF80, AF580, AF880, AF5880 (NO DAMPER)**



**AIRFLOW VS. NC: AF80, AF580, AF880, AF5880 (NO DAMPER)**



SUPPLY GRILLES

AF80 - AF880

**AF80, AF580, AF880, AF5880 Performance Data: Horizontal Throw**
**IP DATA: AF80, AF580, AF880, AF5880 (NO DAMPER)**

Nom Duct in	Duct Area ft²	Neck Vel FPM	Air Flow CFM	0°		22.5°		45°		NC	Octave Band, dB					
				Pt	Throw	Pt	Throw	Pt	Throw		2	3	4	5	6	7
				"WG	ft	"WG	ft	"WG	ft							
<b>6" x 6"</b>	<b>0.250</b>	400	77	.017	7 - 10 - 16	.023	5 - 8 - 12	.029	3 - 4 - 7	-	26	15	16	-	-	-
		650	124	.044	11 - 15 - 21	.060	8 - 11 - 16	.076	5 - 7 - 9	<b>13</b>	38	28	29	20	-	-
		900	172	.084	14 - 17 - 24	.114	11 - 13 - 19	.145	6 - 8 - 11	<b>23</b>	45	37	38	32	26	21
		1150	220	.137	16 - 19 - 27	.187	12 - 15 - 21	.236	7 - 9 - 12	<b>30</b>	51	44	44	41	38	34
		1400	268	.204	17 - 21 - 30	.277	13 - 16 - 23	.350	8 - 10 - 14	<b>36</b>	55	49	49	49	48	44
<b>8" x 6"</b>	<b>0.330</b>	400	106	.017	8 - 12 - 19	.023	6 - 9 - 15	.029	3 - 5 - 9	-	28	16	17	-	-	-
		650	172	.044	13 - 17 - 24	.060	10 - 13 - 19	.076	6 - 8 - 11	<b>14</b>	39	29	30	21	12	-
		900	238	.084	16 - 20 - 28	.114	13 - 16 - 22	.145	7 - 9 - 13	<b>24</b>	47	38	39	34	28	23
		1150	304	.137	19 - 23 - 32	.187	14 - 18 - 25	.236	8 - 10 - 14	<b>31</b>	52	45	46	43	40	35
		1400	370	.204	20 - 25 - 35	.277	16 - 19 - 27	.350	9 - 11 - 16	<b>37</b>	57	50	51	50	50	45
<b>10" x 6"</b>	<b>0.420</b>	400	135	.017	9 - 13 - 21	.023	7 - 10 - 17	.029	4 - 6 - 10	-	29	17	18	-	-	-
		625	211	.041	14 - 19 - 27	.055	11 - 15 - 21	.070	6 - 8 - 12	<b>14</b>	39	29	30	21	11	-
		850	287	.075	18 - 22 - 31	.102	14 - 17 - 24	.129	8 - 10 - 14	<b>23</b>	46	38	38	32	26	21
		1075	363	.120	20 - 25 - 35	.163	16 - 19 - 27	.207	9 - 11 - 16	<b>30</b>	52	44	45	41	38	33
		1300	438	.176	22 - 27 - 38	.239	17 - 21 - 30	.302	10 - 12 - 17	<b>36</b>	56	49	50	48	47	42
<b>8" x 8"</b>	<b>0.440</b>	400	146	.017	9 - 14 - 22	.023	7 - 11 - 17	.029	4 - 6 - 10	-	29	17	19	-	-	-
		625	228	.041	14 - 20 - 28	.055	11 - 15 - 22	.070	6 - 9 - 12	<b>14</b>	39	30	31	21	11	-
		850	310	.075	19 - 23 - 32	.102	14 - 18 - 25	.129	8 - 10 - 15	<b>24</b>	47	38	39	33	26	21
		1075	392	.120	21 - 26 - 36	.163	16 - 20 - 28	.207	9 - 12 - 16	<b>31</b>	52	44	45	42	38	33
		1300	475	.176	23 - 28 - 40	.239	18 - 22 - 31	.302	10 - 13 - 18	<b>36</b>	57	50	50	49	47	43
<b>12" x 6"</b>	<b>0.500</b>	400	164	.017	10 - 15 - 24	.023	7 - 11 - 18	.029	4 - 7 - 11	-	30	18	19	-	-	-
		600	246	.037	15 - 20 - 29	.051	11 - 16 - 22	.064	7 - 9 - 13	<b>14</b>	39	29	30	20	-	-
		800	328	.067	19 - 24 - 33	.090	15 - 18 - 26	.114	9 - 11 - 15	<b>22</b>	46	37	38	31	24	19
		1000	410	.104	21 - 26 - 37	.141	17 - 20 - 29	.179	10 - 12 - 17	<b>29</b>	51	43	44	39	35	30
		1200	492	.150	24 - 29 - 41	.204	18 - 22 - 32	.257	11 - 13 - 18	<b>34</b>	55	48	49	46	44	39
<b>14" x 6"</b>	<b>0.580</b>	400	193	.017	10 - 16 - 26	.023	8 - 12 - 20	.029	5 - 7 - 12	-	30	19	20	-	-	-
		600	290	.037	16 - 22 - 31	.051	12 - 17 - 24	.064	7 - 10 - 14	<b>14</b>	40	30	31	21	-	-
		800	386	.067	21 - 26 - 36	.090	16 - 20 - 28	.114	9 - 12 - 16	<b>23</b>	46	38	38	32	25	19
		1000	483	.104	23 - 29 - 40	.141	18 - 22 - 31	.179	10 - 13 - 18	<b>30</b>	52	44	44	40	36	31
		1200	580	.150	26 - 31 - 44	.204	20 - 24 - 34	.257	12 - 14 - 20	<b>35</b>	56	49	49	47	45	40
<b>12" x 8"</b>	<b>0.670</b>	400	227	.017	11 - 17 - 28	.023	9 - 13 - 21	.029	5 - 8 - 12	-	31	19	20	-	-	-
		600	340	.037	17 - 24 - 34	.051	13 - 19 - 26	.064	8 - 11 - 15	<b>15</b>	40	30	31	22	11	-
		800	453	.067	23 - 28 - 39	.090	18 - 21 - 30	.114	10 - 12 - 18	<b>24</b>	47	38	39	32	25	20
		1000	566	.104	25 - 31 - 44	.141	20 - 24 - 34	.179	11 - 14 - 20	<b>30</b>	52	44	45	41	36	31
		1200	680	.150	28 - 34 - 48	.204	21 - 26 - 37	.257	12 - 15 - 22	<b>36</b>	57	49	50	48	45	41
<b>10" x 10"</b>	<b>0.690</b>	400	238	.017	12 - 17 - 28	.023	9 - 14 - 22	.029	5 - 8 - 13	-	31	19	21	-	-	-
		600	357	.037	17 - 25 - 35	.051	14 - 19 - 27	.064	8 - 11 - 16	<b>15</b>	41	31	32	22	11	-
		800	475	.067	23 - 28 - 40	.090	18 - 22 - 31	.114	10 - 13 - 18	<b>24</b>	47	38	39	33	25	20
		1000	594	.104	26 - 32 - 45	.141	20 - 25 - 35	.179	12 - 14 - 20	<b>31</b>	53	45	45	41	36	32
		1200	713	.150	28 - 35 - 49	.204	22 - 27 - 38	.257	13 - 16 - 22	<b>36</b>	57	50	50	48	45	41
<b>18" x 6"</b>	<b>0.750</b>	400	252	.017	12 - 18 - 29	.023	9 - 14 - 23	.029	5 - 8 - 13	-	31	20	21	-	-	-
		600	377	.037	18 - 25 - 36	.051	14 - 20 - 28	.064	8 - 11 - 16	<b>16</b>	41	31	32	22	12	-
		800	503	.067	24 - 29 - 41	.090	18 - 23 - 32	.114	11 - 13 - 19	<b>24</b>	48	39	40	33	26	20
		1000	629	.104	27 - 33 - 46	.141	21 - 25 - 36	.179	12 - 15 - 21	<b>31</b>	53	45	46	41	37	32
		1200	755	.150	29 - 36 - 51	.204	23 - 28 - 39	.257	13 - 16 - 23	<b>36</b>	57	50	51	48	46	41
<b>12" x 10"</b>	<b>0.833</b>	400	289	.017	13 - 19 - 31	.023	10 - 15 - 24	.029	6 - 9 - 14	-	32	20	21	-	-	-
		600	434	.037	19 - 27 - 38	.051	15 - 21 - 30	.064	9 - 12 - 17	<b>16</b>	41	31	32	23	12	-
		800	578	.067	26 - 31 - 44	.090	20 - 24 - 34	.114	11 - 14 - 20	<b>25</b>	48	39	40	33	26	21
		1000	723	.104	29 - 35 - 49	.141	22 - 27 - 38	.179	13 - 16 - 22	<b>31</b>	53	45	46	42	37	32
		1200	867	.150	31 - 38 - 54	.204	24 - 30 - 42	.257	14 - 17 - 24	<b>37</b>	58	50	51	49	46	42
<b>22" x 6"</b>	<b>0.917</b>	400	310	.017	13 - 20 - 32	.023	10 - 15 - 25	.029	6 - 9 - 15	-	32	21	22	-	-	-
		600	465	.037	20 - 28 - 40	.051	15 - 22 - 31	.064	9 - 13 - 18	<b>16</b>	42	32	33	23	12	-
		800	620	.067	26 - 32 - 46	.090	20 - 25 - 35	.114	12 - 15 - 21	<b>25</b>	48	40	40	34	27	21
		1000	775	.104	30 - 36 - 51	.141	23 - 28 - 40	.179	13 - 16 - 23	<b>32</b>	54	46	46	42	38	33
		1200	930	.150	32 - 40 - 56	.204	25 - 31 - 43	.257	15 - 18 - 25	<b>37</b>	58	51	51	49	47	42

SUPPLY GRILLES

AF80 - AF880

© KRUEGER 2012 NOTE: See notes on page I1-56.



### AF80, AF580, AF880, AF5880 Performance Data: Horizontal Throw

IP DATA: AF80, AF580, AF880, AF5880 (NO DAMPER)

Nom Duct	Duct Area	Neck Vel	Air Flow	0°		22.5°		45°		NC	Octave Band, dB					
				Pt	Throw	Pt	Throw	Pt	Throw		2	3	4	5	6	7
in	ft²	FPM	CFM	"WG	ft	"WG	ft	"WG	ft							
12" x 12"	1.000	400	352	.017	14 - 21 - 34	.023	11 - 16 - 27	.029	6 - 10 - 16	-	33	21	22	-	-	-
		575	505	.034	20 - 29 - 41	.047	16 - 23 - 32	.059	9 - 13 - 19	16	41	31	32	22	11	-
		750	659	.058	27 - 33 - 47	.079	21 - 26 - 37	.101	12 - 15 - 21	24	48	38	39	32	24	19
		925	813	.089	30 - 37 - 52	.121	23 - 29 - 41	.153	14 - 17 - 24	30	52	44	45	40	34	29
		1100	967	.126	33 - 40 - 57	.171	26 - 31 - 44	.216	15 - 18 - 26	35	56	49	50	46	43	38
18" x 10"	1.250	400	443	.017	16 - 24 - 39	.023	12 - 18 - 30	.029	7 - 11 - 17	-	34	22	23	-	-	-
		575	637	.034	23 - 33 - 46	.047	18 - 25 - 36	.059	10 - 15 - 21	17	42	32	33	23	12	-
		750	831	.058	30 - 37 - 53	.079	23 - 29 - 41	.101	13 - 17 - 24	25	49	39	40	33	25	20
		925	1025	.089	34 - 42 - 59	.121	26 - 32 - 46	.153	15 - 19 - 26	31	53	45	46	41	35	30
		1100	1219	.126	37 - 45 - 64	.171	29 - 35 - 50	.216	17 - 20 - 29	36	57	50	51	47	44	39
14" x 14"	1.361	400	488	.017	17 - 25 - 41	.023	13 - 19 - 31	.029	8 - 11 - 18	-	34	23	24	-	-	-
		575	701	.034	24 - 34 - 49	.047	19 - 27 - 38	.059	11 - 15 - 22	17	43	33	34	23	12	-
		750	914	.058	31 - 39 - 56	.079	24 - 30 - 43	.101	14 - 18 - 25	25	49	40	41	33	25	20
		925	1128	.089	36 - 44 - 62	.121	28 - 34 - 48	.153	16 - 20 - 28	31	54	46	46	41	36	31
		1100	1341	.126	39 - 48 - 67	.171	30 - 37 - 52	.216	17 - 21 - 30	36	58	50	51	48	44	39
27" x 8"	1.500	400	529	.017	17 - 26 - 42	.023	13 - 20 - 33	.029	8 - 12 - 19	-	35	23	24	-	-	-
		575	760	.034	25 - 36 - 51	.047	19 - 28 - 39	.059	11 - 16 - 23	17	43	33	34	24	13	-
		750	991	.058	33 - 41 - 58	.079	25 - 32 - 45	.101	15 - 18 - 26	25	49	40	41	34	26	20
		925	1222	.089	37 - 45 - 64	.121	29 - 35 - 50	.153	17 - 20 - 29	32	54	46	47	42	36	31
		1100	1454	.126	40 - 50 - 70	.171	31 - 38 - 54	.216	18 - 22 - 32	37	58	51	51	48	45	40
22" x 10"	1.528	400	546	.017	18 - 26 - 43	.023	14 - 21 - 33	.029	8 - 12 - 19	-	35	23	24	-	-	-
		575	785	.034	25 - 36 - 52	.047	20 - 28 - 40	.059	11 - 16 - 23	17	43	33	34	24	13	-
		750	1024	.058	33 - 42 - 59	.079	26 - 32 - 46	.101	15 - 19 - 26	25	49	40	41	34	26	21
		925	1263	.089	38 - 46 - 65	.121	29 - 36 - 51	.153	17 - 21 - 29	32	54	46	47	42	36	31
		1100	1502	.126	41 - 50 - 71	.171	32 - 39 - 55	.216	19 - 23 - 32	37	58	51	52	48	45	40
24" x 10"	1.667	300	448	.009	13 - 21 - 39	.013	10 - 16 - 30	.016	6 - 9 - 18	-	28	16	17	-	-	-
		475	709	.023	22 - 33 - 49	.032	17 - 25 - 38	.040	10 - 15 - 22	12	39	28	29	17	-	-
		650	971	.044	30 - 41 - 57	.060	23 - 31 - 44	.076	13 - 18 - 26	22	46	37	38	29	19	14
		825	1232	.071	37 - 46 - 65	.096	29 - 35 - 50	.122	17 - 21 - 29	29	52	43	44	38	31	26
		1000	1493	.104	41 - 50 - 71	.141	32 - 39 - 55	.179	18 - 23 - 32	34	57	49	49	45	40	36
18" x 14"	1.750	300	476	.009	13 - 21 - 40	.013	10 - 17 - 31	.016	6 - 10 - 18	-	29	16	17	-	-	-
		475	754	.023	23 - 34 - 50	.032	18 - 26 - 39	.040	10 - 15 - 23	12	39	28	30	17	-	-
		650	1032	.044	31 - 42 - 59	.060	24 - 32 - 46	.076	14 - 19 - 27	22	47	37	38	29	19	14
		825	1309	.071	38 - 47 - 67	.096	30 - 36 - 52	.122	17 - 21 - 30	29	52	44	44	38	31	26
		1000	1587	.104	42 - 52 - 73	.141	33 - 40 - 57	.179	19 - 23 - 33	35	57	49	50	45	41	36
16" x 16"	1.778	300	485	.009	13 - 22 - 40	.013	10 - 17 - 31	.016	6 - 10 - 18	-	29	16	17	-	-	-
		475	767	.023	23 - 34 - 51	.032	18 - 26 - 39	.040	10 - 15 - 23	12	40	29	30	17	-	-
		650	1050	.044	31 - 42 - 60	.060	24 - 33 - 46	.076	14 - 19 - 27	22	47	37	38	29	20	14
		825	1332	.071	39 - 47 - 67	.096	30 - 37 - 52	.122	17 - 21 - 30	29	52	44	44	38	31	26
		1000	1615	.104	43 - 52 - 74	.141	33 - 40 - 57	.179	19 - 24 - 33	35	57	49	50	45	41	36
24" x 12"	2.000	300	545	.009	14 - 23 - 43	.013	11 - 18 - 33	.016	6 - 10 - 19	-	29	16	18	-	-	-
		475	863	.023	24 - 36 - 54	.032	19 - 28 - 42	.040	11 - 16 - 24	13	40	29	30	18	-	-
		650	1181	.044	33 - 45 - 63	.060	26 - 35 - 49	.076	15 - 20 - 28	22	47	38	39	30	20	15
		825	1499	.071	41 - 50 - 71	.096	32 - 39 - 55	.122	18 - 23 - 32	29	53	44	45	39	32	27
		1000	1816	.104	45 - 55 - 78	.141	35 - 43 - 61	.179	20 - 25 - 35	35	57	49	50	46	41	36
18" x 18"	2.250	300	620	.009	15 - 24 - 46	.013	12 - 19 - 35	.016	7 - 11 - 21	-	30	17	18	-	-	-
		475	982	.023	26 - 39 - 58	.032	20 - 30 - 45	.040	12 - 17 - 26	14	41	30	31	18	-	-
		650	1343	.044	35 - 48 - 67	.060	27 - 37 - 52	.076	16 - 21 - 30	23	48	38	39	30	21	15
		825	1705	.071	44 - 54 - 76	.096	34 - 42 - 59	.122	20 - 24 - 34	30	53	45	46	39	32	27
		1000	2066	.104	48 - 59 - 84	.141	37 - 46 - 65	.179	22 - 27 - 38	36	58	50	51	46	42	37
24" x 14"	2.333	300	642	.009	15 - 25 - 47	.013	12 - 19 - 36	.016	7 - 11 - 21	-	30	17	18	-	-	-
		475	1016	.023	26 - 39 - 59	.032	20 - 30 - 45	.040	12 - 18 - 26	14	41	30	31	19	-	-
		650	1391	.044	36 - 48 - 69	.060	28 - 38 - 53	.076	16 - 22 - 31	23	48	38	39	30	21	15
		825	1765	.071	45 - 55 - 77	.096	35 - 42 - 60	.122	20 - 25 - 35	30	54	45	46	39	33	27
		1000	2139	.104	49 - 60 - 85	.141	38 - 47 - 66	.179	22 - 27 - 38	36	58	50	51	47	42	37

NOTE: See notes on page I1-56.

SUPPLY GRILLES

AF80 - AF880

© KRUEGER 2012

**AF80, AF580, AF880, AF5880 Performance Data: Horizontal Throw**

IP DATA: AF80, AF580, AF880, AF5880 (NO DAMPER)

Nom Duct	Duct Area	Neck Vel	Air Flow	0°		22.5°		45°		NC	Octave Band, dB						
				Pt	Throw	Pt	Throw	Pt	Throw		2	3	4	5	6	7	
in	ft <sup>2</sup>	FPM	CFM	"WG	ft	"WG	ft	"WG	ft								
30" x 12"	2.500	300	686	.009	16 - 26 - 48	.013	12 - 20 - 37	.016	7 - 12 - 22	-	30	17	19	-	-	-	
		475	1085	.023	27 - 41 - 61	.032	21 - 32 - 47	.040	12 - 18 - 27	<b>14</b>	41	30	31	19	-	-	
		650	1485	.044	37 - 50 - 71	.060	29 - 39 - 55	.076	17 - 23 - 32	<b>23</b>	48	39	40	31	21	16	
		825	1885	.071	46 - 56 - 80	.096	36 - 44 - 62	.122	21 - 25 - 36	<b>30</b>	54	45	46	40	33	28	
		1000	2285	.104	51 - 62 - 88	.141	39 - 48 - 68	.179	23 - 28 - 40	<b>36</b>	58	50	51	47	42	37	
24" x 16"	2.667	300	739	.009	16 - 27 - 50	.013	13 - 21 - 39	.016	7 - 12 - 22	-	31	18	19	-	-	-	
		475	1170	.023	28 - 42 - 63	.032	22 - 33 - 49	.040	13 - 19 - 28	<b>14</b>	41	30	31	19	-	-	
		650	1600	.044	38 - 52 - 74	.060	30 - 40 - 57	.076	17 - 23 - 33	<b>24</b>	49	39	40	31	21	16	
		825	2031	.071	48 - 59 - 83	.096	37 - 45 - 64	.122	22 - 26 - 37	<b>31</b>	54	46	46	40	33	28	
		1000	2462	.104	53 - 65 - 91	.141	41 - 50 - 71	.179	24 - 29 - 41	<b>36</b>	59	51	52	47	43	38	
20" x 20"	2.778	300	772	.009	17 - 27 - 51	.013	13 - 21 - 40	.016	8 - 12 - 23	-	31	18	19	-	-	-	
		475	1222	.023	29 - 43 - 64	.032	22 - 33 - 50	.040	13 - 19 - 29	<b>14</b>	42	31	32	19	-	-	
		650	1673	.044	39 - 53 - 75	.060	30 - 41 - 58	.076	18 - 24 - 34	<b>24</b>	49	39	40	31	22	16	
		825	2123	.071	49 - 60 - 85	.096	38 - 46 - 66	.122	22 - 27 - 38	<b>31</b>	54	46	47	40	33	28	
		1000	2573	.104	54 - 66 - 93	.141	42 - 51 - 72	.179	24 - 30 - 42	<b>37</b>	59	51	52	47	43	38	
24" x 18"	3.000	300	836	.009	17 - 28 - 53	.013	14 - 22 - 41	.016	8 - 13 - 24	-	31	18	20	-	-	-	
		475	1323	.023	30 - 45 - 67	.032	23 - 35 - 52	.040	13 - 20 - 30	<b>15</b>	42	31	32	20	-	-	
		650	1810	.044	41 - 55 - 78	.060	32 - 43 - 61	.076	18 - 25 - 35	<b>24</b>	49	39	40	32	22	16	
		825	2298	.071	51 - 62 - 88	.096	39 - 48 - 68	.122	23 - 28 - 40	<b>31</b>	55	46	47	41	34	28	
		1000	2785	.104	56 - 69 - 97	.141	43 - 53 - 75	.179	25 - 31 - 44	<b>37</b>	59	51	52	48	43	38	
30" x 16"	3.333	300	929	.009	18 - 30 - 56	.013	14 - 23 - 43	.016	8 - 13 - 25	-	32	19	20	-	-	-	
		475	1471	.023	32 - 47 - 71	.032	24 - 37 - 55	.040	14 - 21 - 32	<b>15</b>	42	31	32	20	-	-	
		650	2013	.044	43 - 58 - 82	.060	33 - 45 - 64	.076	19 - 26 - 37	<b>25</b>	50	40	41	32	22	17	
		825	2556	.071	54 - 66 - 93	.096	42 - 51 - 72	.122	24 - 30 - 42	<b>32</b>	55	47	47	41	34	29	
		1000	3098	.104	59 - 72 - 102	.141	46 - 56 - 79	.179	27 - 33 - 46	<b>37</b>	60	52	53	48	44	39	
22" x 22"	3.361	300	941	.009	19 - 30 - 56	.013	14 - 23 - 44	.016	8 - 14 - 25	-	32	19	20	-	-	-	
		475	1490	.023	32 - 48 - 71	.032	25 - 37 - 55	.040	14 - 21 - 32	<b>15</b>	42	31	32	20	-	-	
		650	2038	.044	43 - 59 - 83	.060	34 - 45 - 64	.076	20 - 26 - 37	<b>25</b>	50	40	41	32	22	17	
		825	2587	.071	54 - 66 - 94	.096	42 - 51 - 72	.122	24 - 30 - 42	<b>32</b>	55	47	47	41	34	29	
		1000	3136	.104	59 - 73 - 103	.141	46 - 56 - 80	.179	27 - 33 - 46	<b>37</b>	60	52	53	48	44	39	
36" x 14"	3.500	300	973	.009	19 - 31 - 57	.013	15 - 24 - 44	.016	8 - 14 - 26	-	32	19	20	-	-	-	
		475	1541	.023	32 - 48 - 72	.032	25 - 38 - 56	.040	15 - 22 - 32	<b>15</b>	43	32	33	20	-	-	
		650	2108	.044	44 - 60 - 84	.060	34 - 46 - 65	.076	20 - 27 - 38	<b>25</b>	50	40	41	32	23	17	
		825	2676	.071	55 - 67 - 95	.096	43 - 52 - 74	.122	25 - 30 - 43	<b>32</b>	55	47	48	41	34	29	
		1000	3243	.104	60 - 74 - 105	.141	47 - 57 - 81	.179	27 - 33 - 47	<b>38</b>	60	52	53	48	44	39	
24" x 22"	3.667	300	1029	.009	19 - 31 - 59	.013	15 - 24 - 46	.016	9 - 14 - 27	-	32	19	20	-	-	-	
		450	1544	.021	31 - 47 - 72	.029	24 - 37 - 56	.036	14 - 21 - 33	<b>14</b>	42	30	31	19	-	-	
		600	2059	.037	42 - 59 - 83	.051	33 - 46 - 65	.064	19 - 27 - 38	<b>23</b>	48	38	39	29	19	13	
		750	2573	.058	52 - 66 - 93	.079	41 - 51 - 72	.101	24 - 30 - 42	<b>29</b>	53	44	45	38	30	25	
		900	3088	.084	59 - 72 - 102	.114	46 - 56 - 79	.145	27 - 33 - 46	<b>35</b>	58	49	50	45	39	34	
30" x 18"	3.750	300	1051	.009	20 - 32 - 60	.013	15 - 25 - 46	.016	9 - 14 - 27	-	32	19	21	-	-	-	
		450	1577	.021	32 - 48 - 73	.029	25 - 37 - 57	.036	14 - 21 - 33	<b>14</b>	42	30	32	19	-	-	
		600	2102	.037	42 - 60 - 84	.051	33 - 46 - 65	.064	19 - 27 - 38	<b>23</b>	48	38	39	30	19	13	
		750	2628	.058	53 - 67 - 94	.079	41 - 52 - 73	.101	24 - 30 - 42	<b>29</b>	54	44	45	38	30	25	
		900	3154	.084	60 - 73 - 103	.114	46 - 57 - 80	.145	27 - 33 - 46	<b>35</b>	58	49	50	45	39	34	
36" x 16"	4.000	300	1120	.009	20 - 33 - 62	.013	16 - 25 - 48	.016	9 - 15 - 28	-	32	20	21	-	-	-	
		450	1680	.021	33 - 49 - 75	.029	25 - 38 - 58	.036	15 - 22 - 34	<b>14</b>	42	31	32	19	-	-	
		600	2240	.037	44 - 62 - 87	.051	34 - 48 - 67	.064	20 - 28 - 39	<b>23</b>	49	39	40	30	19	14	
		750	2800	.058	55 - 69 - 97	.079	42 - 53 - 75	.101	25 - 31 - 44	<b>30</b>	54	45	46	38	30	25	
		900	3360	.084	62 - 75 - 107	.114	48 - 58 - 83	.145	28 - 34 - 48	<b>35</b>	58	50	50	45	39	34	
36" x 18"	4.500	300	1267	.009	21 - 35 - 65	.013	17 - 27 - 51	.016	10 - 16 - 29	-	33	20	21	-	-	-	
		450	1900	.021	35 - 52 - 80	.029	27 - 41 - 62	.036	16 - 24 - 36	<b>15</b>	42	31	32	19	-	-	
		600	2534	.037	47 - 65 - 93	.051	36 - 51 - 72	.064	21 - 29 - 42	<b>23</b>	49	39	40	30	20	14	
		750	3167	.058	58 - 73 - 103	.079	45 - 57 - 80	.101	26 - 33 - 47	<b>30</b>	54	45	46	39	31	25	
		900	3800	.084	65 - 80 - 113	.114	51 - 62 - 88	.145	29 - 36 - 51	<b>36</b>	59	50	51	46	40	35	

NOTE: See notes on page I1-56.

SUPPLY GRILLES

AF80 - AF880







**AF80, AF580, AF880, AF5880 Performance Data: Horizontal Throw**

IP DATA: AF80, AF580, AF880, AF5880 (NO DAMPER)

Nom Duct in	Duct Area ft <sup>2</sup>	Neck Vel FPM	Air Flow CFM	0°		22.5°		45°		NC	Octave Band, dB					
				Pt	Throw	Pt	Throw	Pt	Throw		2	3	4	5	6	7
				"WG	ft	"WG	ft	"WG	ft							
42" x 42"	12.250	300	3545	.009	36 - 58 - 109	.013	28 - 45 - 85	.016	16 - 26 - 49	-	37	25	26	-	-	-
		438	5176	.020	57 - 85 - 132	.027	44 - 66 - 103	.034	26 - 38 - 60	18	46	35	36	23	-	-
		575	6794	.034	75 - 107 - 152	.047	58 - 83 - 117	.059	34 - 48 - 68	26	53	42	43	33	22	16
		713	8425	.053	93 - 119 - 169	.072	72 - 92 - 131	.091	42 - 54 - 76	33	58	48	49	41	33	27
		850	10044	.075	106 - 130 - 184	.102	82 - 101 - 143	.129	48 - 59 - 83	38	62	53	54	48	41	36
44" x 44"	13.444	300	3897	.009	38 - 61 - 115	.013	29 - 47 - 89	.016	17 - 28 - 52	-	38	25	26	-	-	-
		413	5365	.018	56 - 84 - 135	.024	44 - 65 - 104	.030	25 - 38 - 61	17	45	34	35	21	-	-
		525	6820	.029	71 - 107 - 152	.039	55 - 83 - 118	.049	32 - 48 - 68	24	51	40	41	30	18	12
		638	8288	.042	87 - 118 - 167	.058	67 - 92 - 130	.073	39 - 53 - 75	30	55	46	47	38	28	22
		800	10392	.067	108 - 133 - 187	.090	84 - 103 - 145	.114	49 - 60 - 84	37	61	52	53	46	39	34
48" x 42"	14.000	300	4061	.009	38 - 62 - 117	.013	30 - 48 - 91	.016	17 - 28 - 53	-	38	25	26	-	-	-
		413	5590	.018	57 - 86 - 137	.024	44 - 67 - 107	.030	26 - 39 - 62	17	45	34	35	21	-	-
		525	7106	.029	73 - 109 - 155	.039	56 - 85 - 120	.049	33 - 49 - 70	24	51	40	42	30	18	12
		638	8635	.042	89 - 121 - 171	.058	69 - 94 - 132	.073	40 - 54 - 77	30	56	46	47	38	28	22
		800	10828	.067	110 - 135 - 191	.090	86 - 105 - 148	.114	50 - 61 - 86	37	61	52	53	46	39	34
46" x 46"	14.694	300	4266	.009	39 - 64 - 120	.013	31 - 50 - 93	.016	18 - 29 - 54	-	38	25	27	-	-	-
		413	5873	.018	59 - 88 - 141	.024	46 - 68 - 109	.030	26 - 40 - 63	17	46	34	35	22	-	-
		525	7465	.029	75 - 112 - 159	.039	58 - 87 - 123	.049	34 - 50 - 71	25	51	41	42	31	18	13
		638	9072	.042	91 - 124 - 175	.058	70 - 96 - 136	.073	41 - 56 - 79	30	56	46	47	38	28	23
		800	11375	.067	113 - 139 - 196	.090	88 - 107 - 152	.114	51 - 62 - 88	37	61	52	53	46	39	34
48" x 46"	15.333	300	4454	.009	40 - 65 - 123	.013	31 - 51 - 95	.016	18 - 29 - 55	-	38	26	27	-	-	-
		413	6132	.018	60 - 90 - 144	.024	47 - 70 - 112	.030	27 - 41 - 65	18	46	34	35	22	-	-
		525	7795	.029	76 - 115 - 162	.039	59 - 89 - 126	.049	34 - 52 - 73	25	51	41	42	31	19	13
		638	9473	.042	93 - 127 - 179	.058	72 - 98 - 139	.073	42 - 57 - 81	31	56	46	47	38	28	23
		800	11878	.067	116 - 142 - 200	.090	90 - 110 - 155	.114	52 - 64 - 90	37	61	52	53	47	39	34
48" x 48"	16.000	300	4651	.009	41 - 67 - 125	.013	32 - 52 - 97	.016	19 - 30 - 56	-	39	26	27	-	-	-
		413	6403	.018	61 - 92 - 147	.024	48 - 71 - 114	.030	28 - 41 - 66	18	46	34	36	22	-	-
		525	8140	.029	78 - 117 - 166	.039	60 - 91 - 129	.049	35 - 53 - 75	25	52	41	42	31	19	13
		638	9891	.042	95 - 129 - 183	.058	73 - 100 - 142	.073	43 - 58 - 82	31	56	46	47	38	28	23
		800	12403	.067	118 - 145 - 205	.090	92 - 112 - 159	.114	53 - 65 - 92	37	61	53	53	47	40	34

NOTES: Throw values are given for terminal velocities of 150, 100, and 50 FPM. Throw values are given for isothermal conditions. NC values are based on octave band 2 - 7 sound power levels minus a room absorption of 10dB, re 10<sup>-12</sup> Watts. Dash in space denotes a NC or dB value of less than 10. Data was obtained from tests conducted in accordance with ANSI/ASHRAE Standard 70, ISO Standard 5219, and ISO Standard 3741. See Krueger's selection software for performance data not shown, including octave band data.

SUPPLY GRILLES

AF80 - AF880













**AF80, AF580, AF880, AF5880 Performance Data: Horizontal Throw**

METRIC DATA: AF80, AF580, AF880, AF5880 (NO DAMPER)

Nom Duct mm	Duct Area m <sup>2</sup>	Neck Vel m/s	Air Flow L/s	0°			22.5°			45°			NC	Octave Band, dB					
				Pt	Throw		Pt	Throw		Pt	Throw			2	3	4	5	6	7
				Pa	m		Pa	m		Pa	m								
1067 x 1067	1.138	1.52	1673	2.3	10.9 - 17.7 - 33.3	3.2	8.5 - 13.8 - 25.8	4.0	4.9 - 8.0 - 15.0	-	37	25	26	-	-	-			
		2.23	2443	5.0	17.3 - 25.9 - 40.2	6.8	13.4 - 20.1 - 31.2	8.5	7.8 - 11.7 - 18.1	18	46	35	36	23	-	-			
		2.92	3207	8.6	22.7 - 32.6 - 46.1	11.6	17.6 - 25.2 - 35.7	14.7	10.2 - 14.7 - 20.7	26	53	42	43	33	22	16			
		3.62	3976	13.2	28.1 - 36.3 - 51.3	17.9	21.8 - 28.1 - 39.8	22.6	12.7 - 16.3 - 23.1	33	58	48	49	41	33	27			
		4.32	4740	18.7	32.3 - 39.6 - 56.0	25.4	25.1 - 30.7 - 43.4	32.2	14.6 - 17.8 - 25.2	38	62	53	54	48	41	36			
1118 x 1118	1.249	1.52	1839	2.3	11.5 - 18.6 - 34.9	3.2	8.9 - 14.4 - 27.0	4.0	5.2 - 8.4 - 15.7	-	38	25	26	-	-	-			
		2.10	2532	4.4	17.1 - 25.6 - 40.9	6.0	13.2 - 19.9 - 31.7	7.6	7.7 - 11.5 - 18.4	17	45	34	35	21	-	-			
		2.67	3219	7.1	21.7 - 32.6 - 46.2	9.7	16.8 - 25.2 - 35.8	12.3	9.8 - 14.7 - 20.8	24	51	40	41	30	18	12			
		3.24	3911	10.5	26.4 - 36.0 - 50.9	14.3	20.4 - 27.9 - 39.4	18.1	11.9 - 16.2 - 22.9	30	55	46	47	38	28	22			
		4.06	4904	16.6	32.9 - 40.3 - 57.0	22.5	25.5 - 31.2 - 44.2	28.5	14.8 - 18.1 - 25.6	37	61	52	53	46	39	34			
1220 x 1067	1.301	1.52	1916	2.3	11.7 - 19.0 - 35.6	3.2	9.1 - 14.7 - 27.6	4.0	5.3 - 8.5 - 16.0	-	38	25	26	-	-	-			
		2.10	2638	4.4	17.4 - 26.2 - 41.8	6.0	13.5 - 20.3 - 32.4	7.6	7.8 - 11.8 - 18.8	17	45	34	35	21	-	-			
		2.67	3354	7.1	22.2 - 33.2 - 47.1	9.7	17.2 - 25.8 - 36.5	12.3	10.0 - 15.0 - 21.2	24	51	40	42	30	18	12			
		3.24	4075	10.5	26.9 - 36.7 - 51.9	14.3	20.9 - 28.5 - 40.3	18.1	12.1 - 16.5 - 23.4	30	56	46	47	38	28	22			
		4.06	5110	16.6	33.6 - 41.1 - 58.2	22.5	26.0 - 31.9 - 45.1	28.5	15.1 - 18.5 - 26.2	37	61	52	53	46	39	34			
1169 x 1169	1.365	1.52	2013	2.3	12.0 - 19.5 - 36.5	3.2	9.3 - 15.1 - 28.3	4.0	5.4 - 8.8 - 16.4	-	38	25	27	-	-	-			
		2.10	2772	4.4	17.9 - 26.8 - 42.8	6.0	13.8 - 20.8 - 33.2	7.6	8.0 - 12.1 - 19.3	17	46	34	35	22	-	-			
		2.67	3523	7.1	22.7 - 34.1 - 48.3	9.7	17.6 - 26.4 - 37.4	12.3	10.2 - 15.3 - 21.7	25	51	41	42	31	18	13			
		3.24	4281	10.5	27.6 - 37.6 - 53.2	14.3	21.4 - 29.2 - 41.3	18.1	12.4 - 16.9 - 24.0	30	56	46	47	38	28	23			
		4.06	5369	16.6	34.4 - 42.2 - 59.6	22.5	26.7 - 32.7 - 46.2	28.5	15.5 - 19.0 - 26.8	37	61	52	53	46	39	34			
1220 x 1169	1.425	1.52	2102	2.3	12.2 - 19.9 - 37.3	3.2	9.5 - 15.4 - 28.9	4.0	5.5 - 9.0 - 16.8	-	38	26	27	-	-	-			
		2.10	2894	4.4	18.3 - 27.4 - 43.8	6.0	14.2 - 21.2 - 33.9	7.6	8.2 - 12.3 - 19.7	18	46	34	35	22	-	-			
		2.67	3679	7.1	23.2 - 34.8 - 49.3	9.7	18.0 - 27.0 - 38.2	12.3	10.4 - 15.7 - 22.2	25	51	41	42	31	19	13			
		3.24	4471	10.5	28.2 - 38.5 - 54.4	14.3	21.9 - 29.8 - 42.2	18.1	12.7 - 17.3 - 24.5	31	56	46	47	38	28	23			
		4.06	5606	16.6	35.2 - 43.1 - 60.9	22.5	27.3 - 33.4 - 47.2	28.5	15.8 - 19.4 - 27.4	37	61	52	53	47	39	34			
1220 x 1220	1.486	1.52	2195	2.3	12.5 - 20.3 - 38.1	3.2	9.7 - 15.8 - 29.5	4.0	5.6 - 9.1 - 17.2	-	39	26	27	-	-	-			
		2.10	3022	4.4	18.7 - 28.0 - 44.7	6.0	14.5 - 21.7 - 34.7	7.6	8.4 - 12.6 - 20.1	18	46	34	36	22	-	-			
		2.67	3841	7.1	23.7 - 35.6 - 50.4	9.7	18.4 - 27.6 - 39.1	12.3	10.7 - 16.0 - 22.7	25	52	41	42	31	19	13			
		3.24	4668	10.5	28.8 - 39.3 - 55.6	14.3	22.3 - 30.5 - 43.1	18.1	13.0 - 17.7 - 25.0	31	56	46	47	38	28	23			
		4.06	5854	16.6	35.9 - 44.0 - 62.2	22.5	27.9 - 34.1 - 48.2	28.5	16.2 - 19.8 - 28.0	37	61	53	53	47	40	34			

NOTES: Throw values are given for terminal velocities of 0.75, 0.50, and 0.25 m/s. Throw values are given for isothermal conditions. NC values are based on octave band 2 - 7 sound power levels minus a room absorption of 10dB, re 10<sup>-12</sup> Watts. Dash in space denotes a NC or dB value of less than 10. Data was obtained from tests conducted in accordance with ANSI/ASHRAE Standard 70, ISO Standard 5219, and ISO Standard 3741. See Krueger's selection software for performance data not shown, including octave band data.

SUPPLY GRILLES

AF80 - AF880

**680MP, 5680MP Suggested Specification & Configuration**

**680MP, 5680MP**

The industrial supply grille shall be a Krueger model 680MP/5680MP. This grille must have individually adjustable blades on 3/4" centers, held in place with a tensioning wire, which extend through the frame for added rigidity throughout the entire cataloged CFM range. A pole operator shall extend from the face of the grille for easy access to the rear deflection vanes. The blade shall be a solid aluminum extruded airfoil shape design. The frame of the grille shall be constructed of 18 gage steel (680MP) or extruded aluminum (5680MP) with screw holes for mounting. This frame must also produce a border of 1 1/4" around all sides of the grille with mitered corners.

Optional damper shall be available made of heavy gage steel (OBD) or aluminum (5OBD) and operable from the face of the supply grille.

**PERFORMANCE**

The manufacturer shall provide published (printed or electronic) performance data for the diffuser. Performance data shall include 2 - 7 octave band sound power levels. The diffuser shall be tested in accordance to the data standards at the time of product introduction or ANSI/ASHRAE Standard 70.

**FINISH**

The paint finish shall be #44 British White and be an anodic acrylic paint, baked at 315°F for 30 minutes. The paint thickness shall be 0.8 – 1.0 mils, gloss at 60° per ASTM D523-89 of 50 – 85%, pencil hardness per ASTM D3363-92A of HB – H, crosshatch adhesion per ASTM D3359-83 of 4B – 5B, impact per ASTM D2794-93 of direct impact >100 in/lb and reverse impact >80 in/lb, salt spray per ASTM B117-9048 of 96 hours, humidity per ASTM D2247-92 of >500 hours and water soak per ASTM D870-92 of 250 hours.

**1. SERIES: (XXXXXX)**

680MP - Industrial Supply Grille with Fully Adjustable Front Blades and Pole Operated Rear Blades with Steel Frame Construction

5680MP - Industrial Supply Grille with Fully Adjustable Front Blades and Pole Operated Rear Blades with Extruded Aluminum Frame Construction

**2. WIDTH: (XX)**

10" - 40" in 1" Increments

**3. HEIGHT: (XX)**

6" - 36" in 1" Increments

**4. DAMPER: (XX)**

00 - No Damper

01 - Steel Opposed Blade Damper (Model OBD)

13 - Painted Steel Opposed Blade Damper (Model POBD)

15 - Aluminum Opposed Blade Damper (Model 5OBD)

**5. FINISH: (XX)**

01 - Mill

10 - Alumican

35 - Black

44 - British White

*Use multiple sections for larger sizes.*

*Mounting hardware is to be provided by others.*

INDUSTRIAL GRILLES

6  
8  
0  
-  
5  
6  
8  
0  
-  
6  
8  
8  
0  
-  
5  
6  
8  
8  
0  
-  
6  
8  
0  
M  
P

**SAMPLE CONFIGURATION: 680MP - 20x20 - 00 - 44**