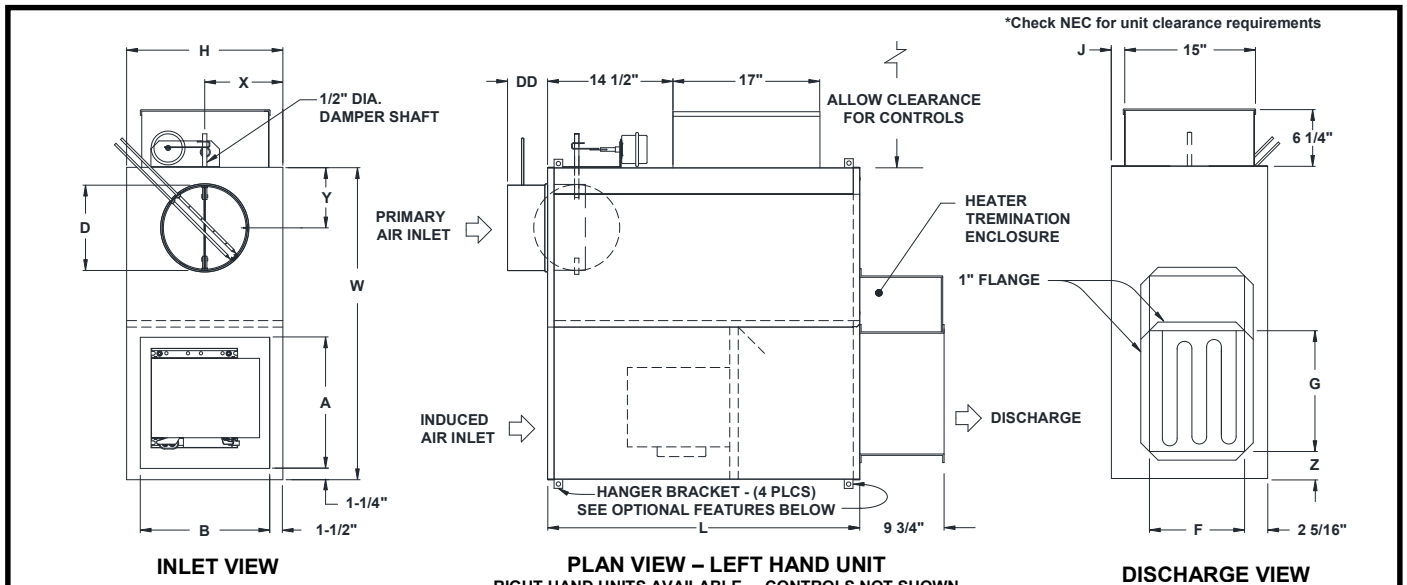


JOB NAME _____
 ARCHITECT _____
 ENGINEER _____
 CONTRACTOR _____
 LOCATION _____

SUBMITTAL SHEET
 Form Number TUS0331.4 Effective Date 8/20
 Replaces FORM TUS0331.3



KQFP w/ PNEUMATIC CONTROLS & ELECTRIC HEAT
VARIABLE VOLUME FAN TERMINAL UNIT, SIZES 2-7



STANDARD FEATURES:

- 20 Ga. galvanized steel construction
- Control enclosure for electronic components
- 1/2" thick dual density fiberglass insulation meeting **NFPA 90A** and **UL 181** safety requirements
- 120V 208V/240V 277V multi-voltage, single speed, single phase, permanently lubricated PSC motors
- Field adjustable fan speed control
- 80/20 Ni-cr element
- Integral induced air attenuator
- Motor/blower isolation
- Back draft damper assembly
- Four quadrant averaging cross flow sensor inlet sizes 6-10 (DD = 4 7/8") sizes 12-16 (DD = 6 7/8").
- Removable bottom panel allows easy access to motor-blower assembly and primary air damper
- Discharge requires a flanged duct connection by others.
- Factory supplied 24 volt control transformer
- **ETL** listed – Adherence to **UL1995** and **CSA C22.2 No.236.95**.
- **AHRI** certified sound ratings

OPTIONAL FEATURES:

- ECM Motor (Available on Unit Size 4 & 7)
- Manual Control
- 2-10Vdc Remote Control
- 120V 208V/240V 277V
- **Liners:**
 - 1" Dual density fiberglass insulation
 - 1/2" Cellular insulation
 - 1" Cellular insulation
 - 13/16" Steriliner Duct Board Insulation
 - 1/2" Foil encapsulated fiberglass insulation
 - 1" Foil encapsulated fiberglass insulation
 - Solid Metal Liner w/ 1/2" Dual Density Fiberglass
 - Perforated Metal Liner w/ 1/2" Dual Density Fiberglass
- Linear average sensor / inlet size 6-10 (DD = 4 7/8"), sizes 12 – 16 (DD = 6 7/8")
- Chicago Code
- Motor fusing
- Door Interlocking Disconnect Switch
 - Fused
 - Non-Fused
- Induced air filter (Unit Size 2-4: 17"x17"x1", Unit Size 5-7: 22"x19"x1")
- Dust tight control enclosure
- Hanger Brackets (not available with Double wall or Perf Double wall)

NOTE: Dimensions are given in inches

UNIT SIZE	MAX PRI. CFM	MAX FAN CFM	PSC MOTOR HP	INLET SIZE	L	W	H	INDUCED AIR		D	DISCHARGE		J	X	Y	Z
								A	B		F	G				
2	500	550	1/4	06	36 1/8	36 1/8	18 1/16	15 1/8	15	5 7/8	11 1/2	14 1/2	1 9/16	9	6	2 7/8
2	900	550	1/4	08	36 1/8	36 1/8	18 1/16	15 1/8	15	7 7/8	11 1/2	14 1/2	1 9/16	9	6	2 7/8
3	900	870	1/4	08	36 1/8	36 1/8	18 1/16	15 1/8	15	7 7/8	11 1/2	14 1/2	1 9/16	9	6	2 7/8
3	1450	870	1/4	10	36 1/8	36 1/8	18 1/16	15 1/8	15	9 7/8	11 1/2	14 1/2	1 9/16	9	7	2 7/8
4	1450	960	1/4	10	36 1/8	36 1/8	18 1/16	15 1/8	15	9 7/8	11 1/2	14 1/2	1 9/16	9	7	2 7/8
4	2100	960	1/4	12	36 1/8	36 1/8	18 1/16	15 1/8	15	11 7/8	11 1/2	14 1/2	1 9/16	9	8	2 7/8
5	2100	1900	1/2	12	42 1/8	46 1/8	20 1/16	20 1/8	17	11 7/8	15	17	2 9/16	10	8	5 1/2
5	2800	1900	1/2	14	42 1/8	46 1/8	20 1/16	20 1/8	17	13 7/8	15	17	2 9/16	10	10	5 1/2
6	2800	1900	1/2	14	42 1/8	46 1/8	20 1/16	20 1/8	17	13 7/8	15	17	2 9/16	10	10	5 1/2
6	3700	1900	1/2	16	42 1/8	46 1/8	20 1/16	20 1/8	17	15 7/8	15	17	2 9/16	10	10 1/4	5 1/2
7	3700	2300	3/4	16	42 1/8	46 1/8	20 1/16	20 1/8	17	15 7/8	15	17	2 9/16	10	10 1/4	5 1/2