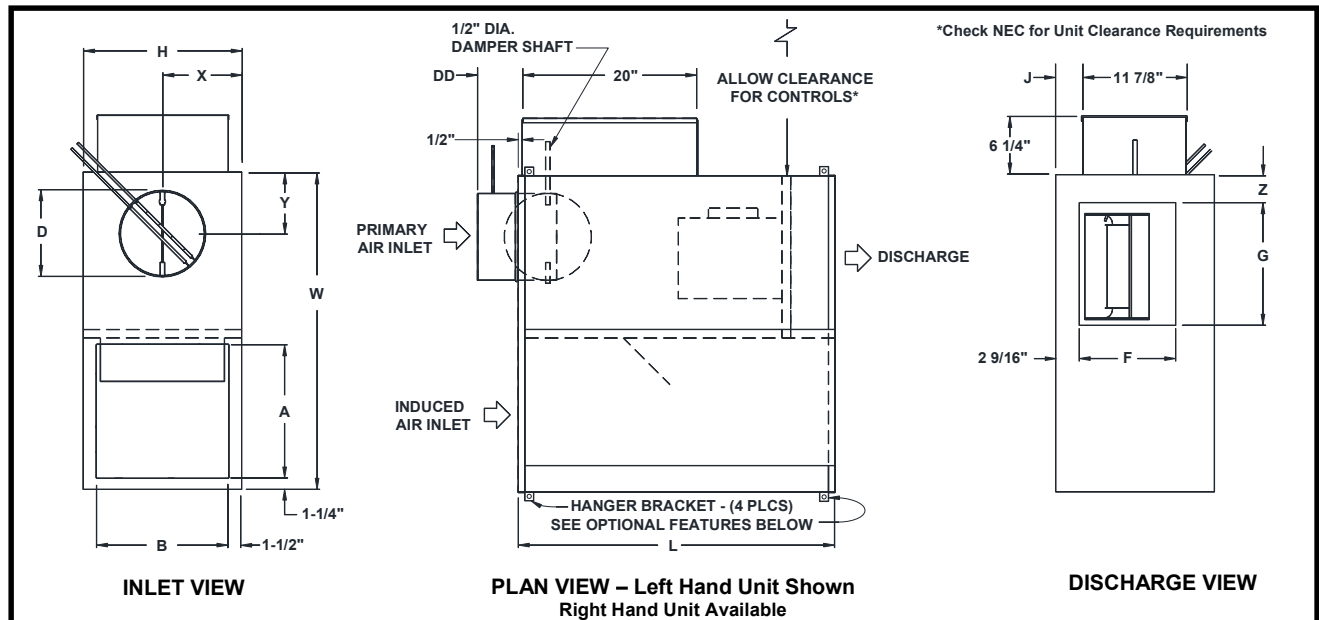


JOB NAME _____
 ARCHITECT _____
 ENGINEER _____
 CONTRACTOR _____
 LOCATION _____

SUBMITTAL SHEET
 Form Number TUS0316.9 Effective Date 8/20
 Replaces Form TUS316.8



KQFS w/ELECTRONIC CONTROLS
CONSTANT VOLUME FAN TERMINAL UNIT, SIZES 2-7



STANDARD FEATURES:

- 20 Ga. galvanized steel construction
- Control enclosure for electronic components.
- 1/2" thick dual density fiberglass insulation meeting **NFPA 90A** and **UL 181** safety requirements
- 120V 208V/240V 277V multi-voltage, single speed, single phase, permanently lubricated PSC motors (Unit Size 7 not available in 120V)
- Field adjustable fan speed control
- Integral induced air attenuator
- Motor/blower isolation
- Four quadrant averaging cross flow sensor inlet size 6-10 (DD=4 7/8") sizes 12-16 (DD=6 7/8")
- Removable bottom panel allows easy access to motor-blower assembly and primary air damper
- Discharge requires a flanged duct connection by others.
- Factory supplied 24 volt control transformer
- ETL listed – Adherence to **UL1995** and **CSA C22.2 No.236.95**.
- **AHRI** certified sound ratings

OPTIONAL FEATURES:

- ECM Motor (Available on Unit Size 3, 6, & 7)
 - Manual Control
 - 2-10Vdc Remote Control
 - 120V 208V/240V 277V
- Liners:
 - 1" Dual density fiberglass insulation
 - 1/2" Cellular insulation
 - 1" Cellular insulation
 - 13/16" Steriliner Duct Board Insulation
 - 1/2" Foil encapsulated fiberglass insulation
 - 1" Foil encapsulated fiberglass insulation
 - Solid Metal Liner w/ 1/2" Dual Density Fiberglass
 - Perforated Metal Liner w/ 1/2" Dual Density Fiberglass
- Linear average sensor / inlet sizes 6-10 (DD = 4 7/8"), sizes 12 – 16 (DD = 6 7/8")
- Cam lock bottom access
- Dust tight control enclosure
- Construction type induced air filter; Unit sizes 2 - 3 (17"x17"x1"); Unit sizes 4 - 7 (22"x19"x1")
- Hanger Brackets (not available with Double wall or Perf Double wall)
- Motor disconnect
- Motor fusing

NOTE: Dimensions are given in inches

UNIT SIZE	INLET SIZE	PSC HP	ECM HP	L	W	H	INDUCED AIR		D	DISCHARGE		J	X	Y	Z
							A	B		F	G				
2	06	1/10	-	39 1/2	36 1/8	18 1/16	15 1/8	15	5 7/8	11	14	3 1/8	9	6	2 5/8
2	08	1/10	-	39 1/2	36 1/8	18 1/16	15 1/8	15	7 7/8	11	14	3 1/8	9	6	2 5/8
3	06	1/4	1/2	39 1/2	36 1/8	18 1/16	15 1/8	15	5 7/8	11	14	3 1/8	9	6	2 5/8
3	08	1/4	1/2	39 1/2	36 1/8	18 1/16	15 1/8	15	7 7/8	11	14	3 1/8	9	6	2 5/8
3	10	1/4	1/2	39 1/2	36 1/8	18 1/16	15 1/8	15	9 7/8	11	14	3 1/8	9	7	2 5/8
3	12	1/4	1/2	39 1/2	36 1/8	18 1/16	15 1/8	15	11 7/8	11	14	3 1/8	9	8	2 5/8
4	10	1/4	-	42 1/8	46 1/8	20 1/16	20 1/8	17	9 7/8	11	14	4 1/8	10	7	5 5/8
4	12	1/4	-	42 1/8	46 1/8	20 1/16	20 1/8	17	11 7/8	11	14	4 1/8	10	8	5 5/8
5	12	1/2	-	42 1/8	46 1/8	20 1/16	20 1/8	17	11 7/8	15	17	4 1/8	10	8	4 7/8
5	14	1/2	-	42 1/8	46 1/8	20 1/16	20 1/8	17	13 7/8	15	17	4 1/8	10	10	4 7/8
6	10	3/4	1	42 1/8	46 1/8	20 1/16	20 1/8	17	9 7/8	15	17	4 1/8	10	7	4 7/8
6	12	3/4	1	42 1/8	46 1/8	20 1/16	20 1/8	17	11 7/8	15	17	4 1/8	10	8	4 7/8
6	14	3/4	1	42 1/8	46 1/8	20 1/16	20 1/8	17	13 7/8	15	17	4 1/8	10	10	4 7/8
7	14	1	1	42 1/8	46 1/8	20 1/16	20 1/8	17	13 7/8	15	17	4 1/8	10	10	4 7/8
7	16	1	1	42 1/8	46 1/8	20 1/16	20 1/8	17	15 7/8	15	17	4 1/8	10	10 1/4	4 7/8