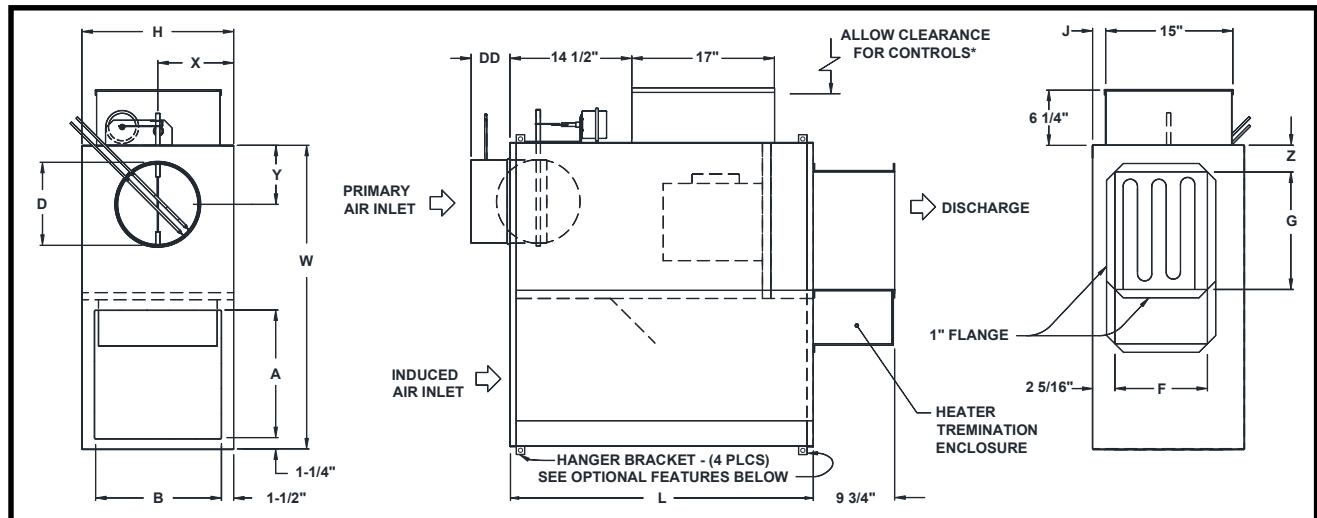


JOB NAME _____
 ARCHITECT _____
 ENGINEER _____
 CONTRACTOR _____
 LOCATION _____

SUBMITTAL SHEET
 Form Number TUS0313.7 Effective Date 05/20
 Replaces Form TUS0313.6



KQFS w/ PNEUMATIC CONTROLS and ELECTRIC HEAT
CONSTANT VOLUME FAN TERMINAL UNIT, SIZES 2-7



INLET VIEW

PLAN VIEW – LEFT HAND UNIT
 RIGHT HAND UNITS AVAILABLE - CONTROLS NOT SHOWN

DISCHARGE VIEW

STANDARD FEATURES:

- 20 Ga. galvanized steel construction.
- Control enclosure for electronic components.
- 1/2" thick dual density fiberglass insulation meeting **NFPA 90A** and **UL 181** safety requirements.
- 120V 208V/240V 277V multi-voltage, single speed, single phase, permanently lubricated PSC motors (Unit Size 7 not available in 120V).
- Field adjustable fan speed control.
- 80/20 Ni-Cr element.
- Integral induced air attenuator.
- Motor/blower isolation.
- Removable bottom panel allows easy access to motor-blower assembly and primary air damper.
- Four quadrant averaging cross flow sensor inlet size 6 – 10 (DD = 4 7/8"), sizes 12 – 16 (DD = 6 7/8").
- Discharge requires a flanged duct connection by others.
- Factory supplied 24 volt control transformer.
- **ETL** listed – Adherence to **UL1995** and **CSA C22.2 No.236.95**
- **AHRI** certified sound ratings.

OPTIONAL FEATURES:

- ECM Motor (Available on Unit Size 3, 6, & 7)
 - Manual Control 0-10Vdc Remote Control
 - 2-10Vdc Remote Control
 - 120V 208V/240V 277V
- Liners:
 - 1" Dual density fiberglass insulation
 - 1/2" Cellular insulation
 - 1" Cellular insulation
 - 13/16" Steriliner Duct Board Insulation
 - 1/2" Foil encapsulated fiberglass insulation
 - 1" Foil encapsulated fiberglass insulation
 - Solid Metal Liner w/ 1/2" Dual Density Fiberglass
 - Perforated Metal Liner w/ 1/2" Dual Density Fiberglass
- Linear average sensor / inlet sizes 6-10 (DD = 4 7/8"), sizes 12 – 16 (DD = 6 7/8")
- Door Interlocking Disconnect Switch
 - Fused Non-Fused
 - Cam lock bottom access Motor Fusing
- Dust tight control enclosure
- Construction type induced air filter; Unit sizes 2 - 3 (17"x17"x1"); Unit sizes 4 - 7 (22"x19"x1")
- Hanger Brackets (not available with Double wall or Perf Double wall)

NOTES: Dimensions are given in inches
 *Check NEC for unit clearance requirements.

UNIT SIZE	MAX PRI CFM	MAX FAN CFM	PSC MOTOR HP	INLET SIZE	L	W	H	INDUCED AIR			DISCHARGE		J	X	Y	Z
								A	B	D	F	G				
2	500	550	1/10	06	39 1/2	36 1/8	18 1/16	15 1/8	15	5 7/8	11 1/2	14 1/2	1 9/16	9	6	1 7/8
2	900	550	1/10	08	39 1/2	36 1/8	18 1/16	15 1/8	15	7 7/8	11 1/2	14 1/2	1 9/16	9	6	1 7/8
3	900	1150	1/4	08	39 1/2	36 1/8	18 1/16	15 1/8	15	7 7/8	11 1/2	14 1/2	1 9/16	9	6	1 7/8
3	1450	1150	1/4	10	39 1/2	36 1/8	18 1/16	15 1/8	15	9 7/8	11 1/2	14 1/2	1 9/16	9	7	1 7/8
4	1450	1425	1/4	10	42 1/8	46 1/8	20 1/16	20 1/8	17	9 7/8	11 1/2	14 1/2	2 9/16	10	7	4 7/8
4	2100	1425	1/4	12	42 1/8	46 1/8	20 1/16	20 1/8	17	11 7/8	11 1/2	14 1/2	2 9/16	10	8	4 7/8
5	2100	1900	1/2	12	42 1/8	46 1/8	20 1/16	20 1/8	17	11 7/8	15	17	2 9/16	10	8	4 3/8
5	2800	1900	1/2	14	42 1/8	46 1/8	20 1/16	20 1/8	17	13 7/8	15	17	2 9/16	10	10	4 3/8
6	2800	2700	3/4	14	42 1/8	46 1/8	20 1/16	20 1/8	17	13 7/8	15	17	2 9/16	10	10	4 3/8
6	3700	2700	3/4	16	42 1/8	46 1/8	20 1/16	20 1/8	17	15 7/8	15	17	2 9/16	10	10 1/4	4 3/8
7	3700	3000	1	16	42 1/8	46 1/8	20 1/16	20 1/8	17	15 7/8	15	17	2 9/16	10	10 1/4	4 3/8