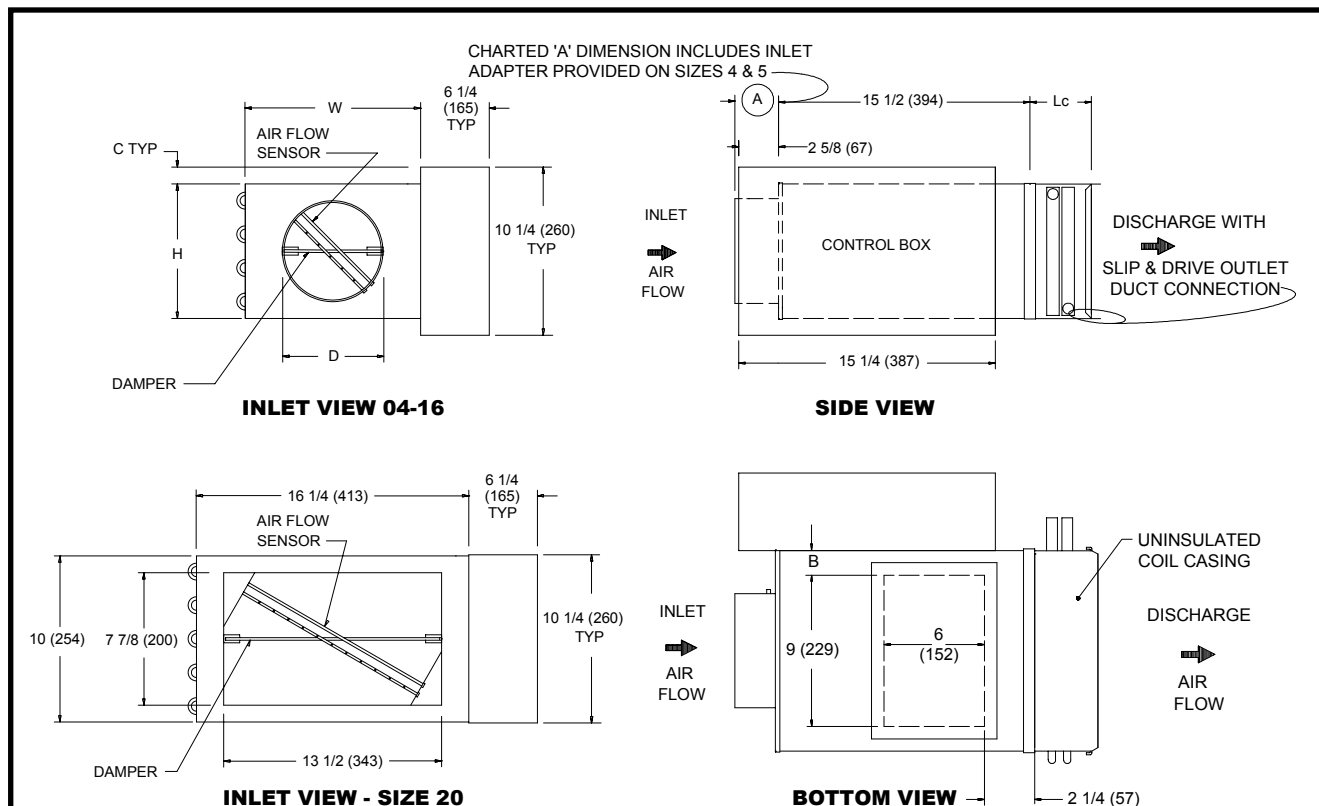


JOB NAME _____
 ARCHITECT _____
 ENGINEER _____
 CONTRACTOR _____
 LOCATION _____

SUBMITTAL SHEET
 Form Number TSLP04-EC.1 Effective Date 6/06
 Replaces Form: TSLP04-EC.0



LMHS
LOW PROFILE UNIT WITH HOT WATER HEAT - ELECTRIC or ELECTRONIC CONTROL



STANDARD FEATURES:

- 22 Ga. Zinc coated steel construction.
- **NEMA 1** steel control enclosure for electronic components
- 1/2" thick dual density fiberglass insulation meeting **NFPA 90A** and **UL 181** safety requirements.
- Linear averaging sensor.
- Hot water coils. See form TS0005 for dimensions and specifications
- Variety of analog and digital control packages for pressure independent systems.
- **ARI** certified sound ratings

NOTE: Right hand configuration shown, left hand available.

OPTIONAL FEATURES:

- 20 Ga. Zinc coated steel construction
- Liners:
 - Cellular insulation
 - Sterilwall
 - 1" dual density fiberglass insulation
- Four quadrant averaging cross flow sensor
- Disconnect switch for electronic controls
- Left hand controls.
- Left hand water coil connection
- Dust tight control enclosure
- Bottom access panel (not available in size 22)
- Cam lock bottom access panel (not available in size 22)
- Hanger brackets
- 24 volt transformer.
- None
- Steriliner
- Perf double wall
- Right hand controls.
- Right hand water coil connection.

DIMENSIONS ARE GIVEN AS INCHES (MM)

INLET SIZE	NOM MAX CFM (L/s)	W	H	A	B	C	D	Lc	
								1 Row	2 Row
4	230 (109)	12 (305)	8 (203)	5 3/8 (136)	1 1/2 (38)	1 1/8 (29)	3 7/8 (98)	5 (127)	7 1/4 (184)
5	360 (170)	12 (305)	8 (203)	5 3/8 (136)	1 1/2 (38)	1 1/8 (29)	4 7/8 (124)	5 (127)	7 1/4 (184)
6	520 (245)	12 (305)	8 (203)	3 3/8 (86)	1 1/2 (38)	1 1/8 (29)	5 7/8 (149)	5 (127)	7 1/4 (184)
7	710 (335)	12 (305)	10 (254)	3 3/8 (86)	1 1/2 (38)	1/8 (3)	6 7/8 (175)	5 (127)	7 1/4 (184)
8	925 (437)	12 (305)	10 (254)	3 3/8 (86)	1 1/2 (38)	1/8 (3)	7 7/8 (200)	5 (127)	7 1/4 (184)
20	2100 (991)	16 1/4 (406)	10 (254)	2 7/8 (73)	3 5/8 (92)	1/8 (3)	N/A	5 (127)	7 1/4 (184)