

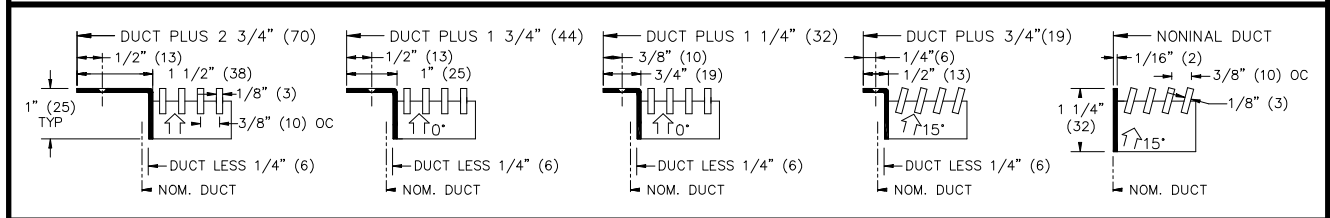
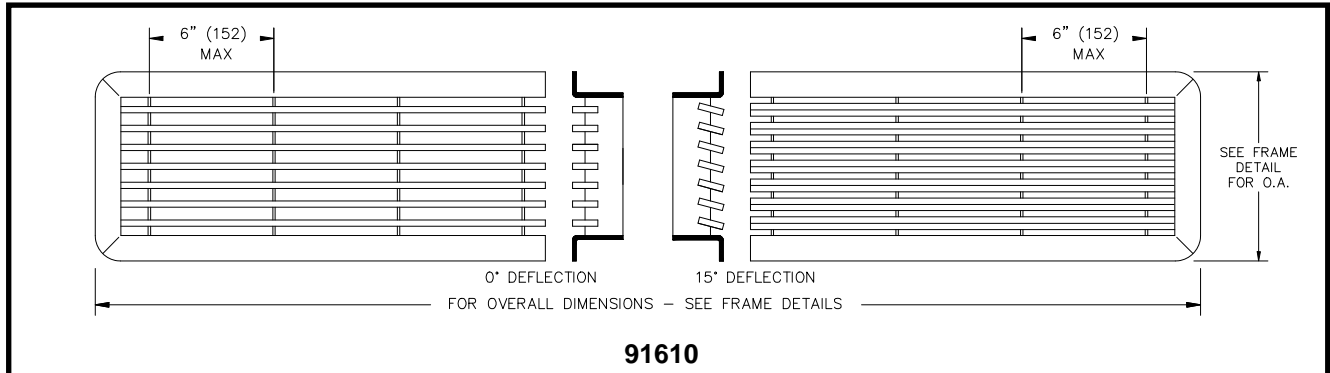
JOB NAME \_\_\_\_\_  
 ARCHITECT \_\_\_\_\_  
 ENGINEER \_\_\_\_\_  
 CONTRACTOR \_\_\_\_\_  
 LOCATION \_\_\_\_\_

**SUBMITTAL SHEET**  
 Form Number GSS015 Effective Date 5/04  
 NEW

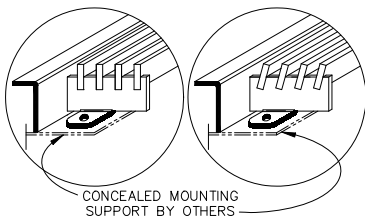


**91610 SERIES**  
**HEAVY DUTY STAINLESS STEEL BAR GRILLE**

**1/8" BARS - 3/8" SPACING**



**F15**       **F10**       **F75**       **F50**       **S1**



**CONCEALED FASTENING  
 DETAILS**

**DIMENSIONS ARE GIVEN AS INCHES (MM)**

**NOTES :**

1. STANDARD CONSTRUCTION IS ALL WELDED, 14 GA. 304 STAINLESS STEEL
2. 1/8"x 1/2" BARS ARE WELDED IN PLACE FOR 0° OR 15° DEFLECTION
3. STANDARD FINISH IS #3 SATIN POLISHED
4. MAX SINGLE SECTION IS 60" x 24".

**OPTIONS :**

- TYPE 316 STAINLESS STEEL
- MILL FINISH
- NO SCREWHOLE
- # 6 x 1 1/4" TRUSS HEAD PHILLIPS STAINLESS STEEL SHEET METAL SCREWS
- 90BD** - 20 GA STAINLESS STEEL OPPOSED BLADE DAMPER IS WELDED TO THE UNIT AND OPERATED BY A SCREWDRIVER
- 9SSG** - ADJUSTABLE STRAIGHTENING GRID IS WELDED TO THE UNIT

