

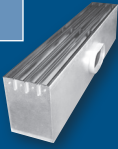


PTBS

This plenum slot supply diffuser features an adjustable blade.

Slots: 1 to 4

Slot Widths: ¾", 1", 1½"



PTBA

This plenum slot supply diffuser features 'Ice Tong' blades.

Slots: 1 to 4

Slot Widths: ¾", 1"

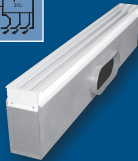


PTBT

This plenum slot supply diffuser features fixed, curved blades.

Slots: 1 to 4*

* 1 to 4 slots available with 1-way deflection, 2 to 4 slots available with 2-way deflection.



PTBSS, PTBSSF, & PFTBS (FR)

These plenum slot supply diffusers feature a fixed curved blade.

Available with fire damper (PFTBS) and factory installed blades (PTBSSF).

Slots: 1 or 2

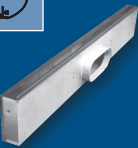
Slot Widths: ¾", 1", 1½"

**¾" Slot width only available on model PFTBS.



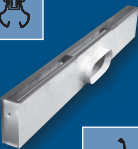
PTBSC, PTBSRC

The plenum slot supply (PTBSC) diffuser features a fixed horizontal pattern controller to provide 1-way airflow; also available with a return slot (PTBSRC).



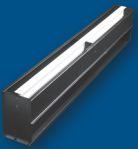
PTBSCDB, PTBSRCDB

The plenum slot supply (PTBSCDB) diffuser features a center downblow and a fixed horizontal pattern controller to provide 1-way airflow; also available with a return slot (PTBSRCDB).



PTBR/PFTBR (FR)

These plenum slot return diffusers are available with a fire damper (PFTBR) or without (PTBR).



PTBS

Introduction & Dimensional Information F1-3
 Accessories..... F1-5
 Reference Charts..... F1-7
 Performance Data..... F1-9
 Engineering Specification F1-27

PTBA

Introduction & Dimensional Information F1-28
 Accessories..... F1-30
 Reference Charts..... F1-31
 Performance Data..... F1-33
 Engineering Specification F1-41

PTBT

Introduction & Dimensional Information F1-42
 Pattern Designations & Plaster Frame..... F1-43
 Inlet Collars F1-44
 Reference Charts..... F1-45
 Performance Data..... F1-47
 Engineering Specification F1-51

PTBSS, PTBSSF & PFTBS (Fire Rated)

Introduction & Dimensional Information F1-52
 Accessories..... F1-54
 Reference Charts..... F1-56
 Performance Data..... F1-58
 Engineering Specifications..... F1-66

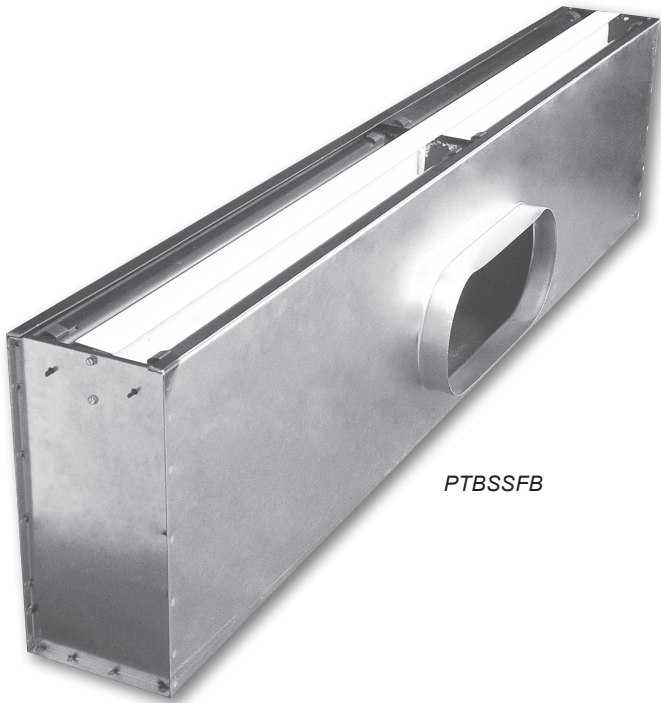
PTBSC, PTBSRC, PTBSCDB, PTBSRCDB

Introduction F1-68
 Dimensional Information F1-69
 Reference Charts..... F1-71
 Performance Data..... F1-73
 Engineering Specifications..... F1-78

PTBR & PFTBR (Fire Rated)

Introduction & Dimensional Information F1-80
 Accessories..... F1-81
 Reference Charts..... F1-82
 Performance Data..... F1-83
 Engineering Specifications..... F1-87

PLENUM SLOT DIFFUSERS



PTBSSFB

Introduction: PTBSS, PTBSSFB, PFTBS —

The PTBSS (or fire rated, PFTBS) series plenum slot diffuser features a curved blade that directs a horizontal discharge air pattern. The PTBSS blades are shipped loose for field installation or the factory can mount the blades (PTBSSFB). The plenum is an integral part of the diffuser and has a drawn inlet collar to prevent plenum air leakage and simplify installation of the diffuser. The fixed horizontal discharge air pattern makes Krueger's PTBSS series diffuser an ideal choice for tenant areas that have short tenant life cycles and VAV cooling applications.

MODELS

- PTBSS - Plenum Slot Diffuser with a Fixed Steel Blade, Shipped Loose
- PTBSSFB - Plenum Slot Diffuser with a Fixed Steel Blade, Factory Installed
- PFTBS - Fire Rated, Plenum Slot Diffuser with a Fixed Steel Blade (Factory Installed)

FEATURES

- Slots: 1 or 2.
- Slot Widths: 1" and 1 1/2".
- Lengths: 24", 36", 48", and 60".
- Double metal thickness at slot face for rigidity and straightness.

ACCESSORIES

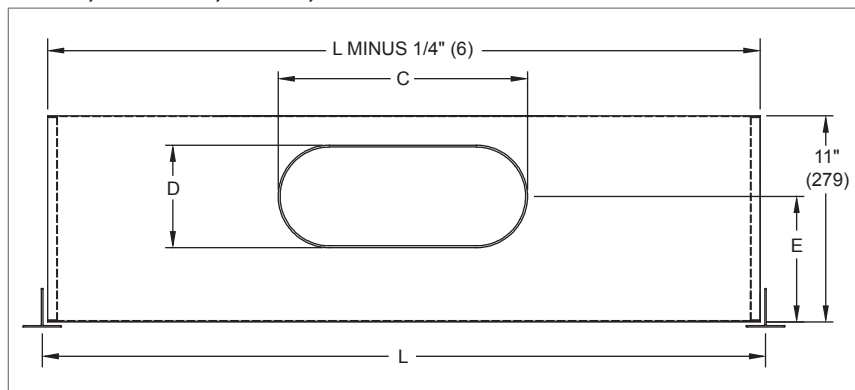
- Factory Installed T-Bars

FINISHES

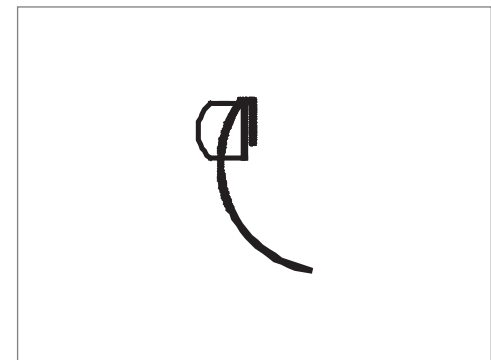
- Standard finish is black face with optional white tees.
- Optional finishes available.

PTBSS, PTBSSFB, PFTBS Dimensional Information

PTBSS, PTBSSFB, PFTBS, INLET SIDE VIEW



PTBSS, PTBSSFB, PFTBS, PATTERN CONTROLLER



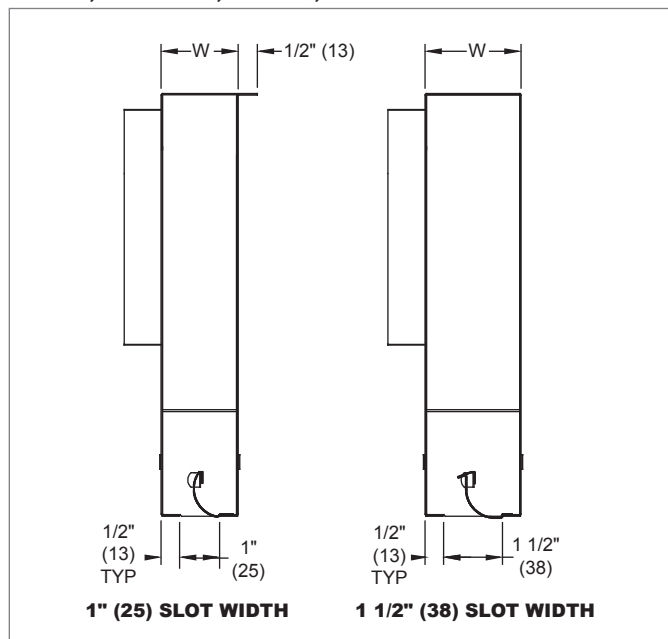
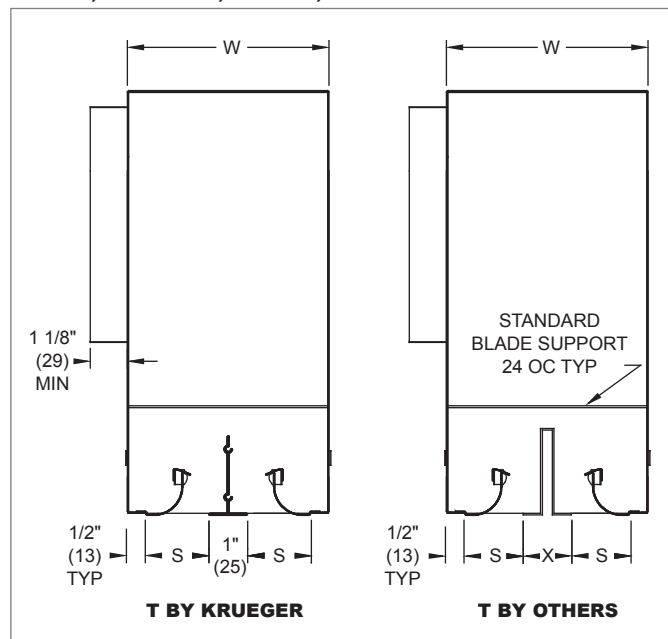
PTBSS, PTBSSFB, PFTBS, AVAILABLE SIZES

| Inlet Size | C | D | E | L |
|----------------|----------------|--------------|---------------|-------------------------|
| 5" (127) Round | 4 7/8" (124) | 4 7/8" (124) | 6 3/16" (157) | 24" (610) - 36" (914) |
| 6" (152) Oval | 6 1/4" (159) | 5 1/4" (133) | 6 3/8" (162) | 24" (610) - 60" (1524) |
| 8" (203) Oval | 9 3/8" (238) | 5 1/4" (133) | 6 3/8" (162) | 24" (610) - 60" (1524) |
| 10" (254) Oval | 12 1/2" (318) | 5 1/4" (133) | 6 3/8" (162) | 24" (610) - 60" (1524) |
| 12" (305) Oval | 15 9/16" (395) | 5 1/4" (133) | 6 3/8" (162) | 48" (1219) - 60" (1524) |

NOTE: Dimensions in parentheses are mm.

PTBSSFB

© KRUEGER 2012

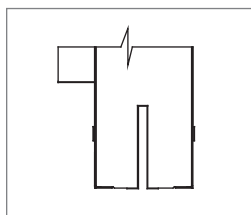
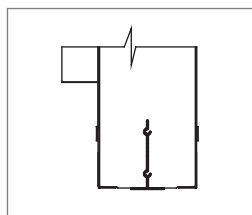
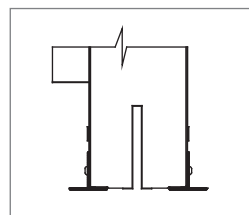
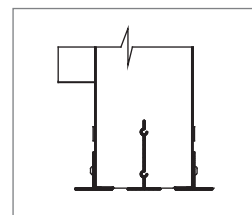
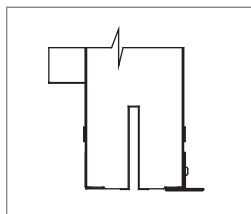
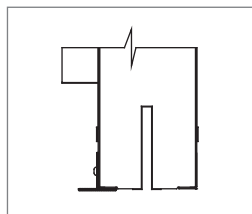
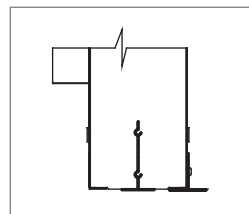
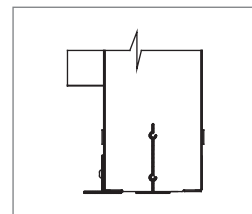
PTBSS, PTBSSFB Dimensional Information
PTBSS, PTBSSFB, 1-SLOT, CROSS SECTION

PTBSS, PTBSSFB, 2-SLOT, CROSS SECTION


PLENUM SLOT DIFFUSERS

PTBSS, PTBSSFB, AVAILABLE SIZES

| S | L | 1 Slot | | 2 Slot | |
|-------------|------------|-------------|--------------|-------------|--|
| | | W | W | X | |
| 1" (25) | 24" (610) | 2" (51) | 4" (102) | 1" (25) | |
| | 36" (914) | | | | |
| | 48" (1219) | | | | |
| | 60" (1524) | | | | |
| 1 1/2" (38) | 24" (610) | 2 1/2" (64) | 5 1/4" (133) | 1 1/4" (32) | |
| | 36" (914) | | | | |
| | 48" (1219) | | | | |
| | 60" (1524) | | | | |

NOTE: Dimensions in parentheses are mm.

**FRAME 23A,
T BY OTHERS**

**FRAME 23B,
CENTER T ONLY**

**FRAME 23C,
T ON BOTH ENDS**

**FRAME 23D,
CENTER & OUTER T**

**FRAME 23EL,
T OPPOSITE OF INLET**

**FRAME 23ER,
T ON INLET SIDE**

**FRAME 23GL,
T ON CENTER &
OPPOSITE INLET**

**FRAME 23GR,
T ON CENTER &
INLET SIDE**


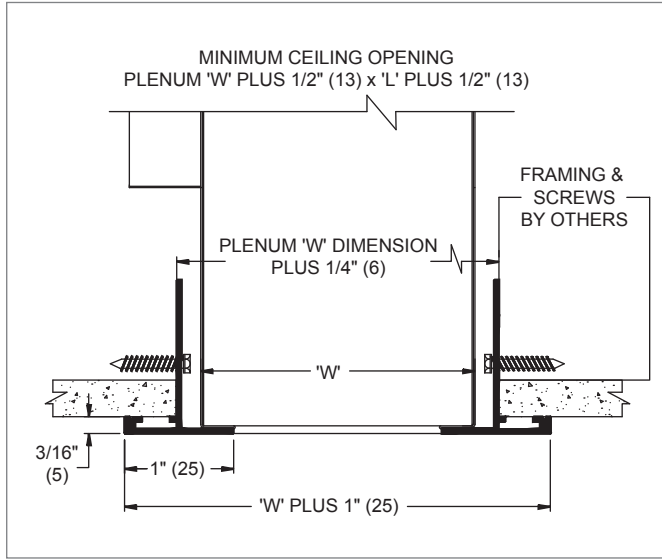
PTBSS - PTBSSFB

PTBSS, PTBSSFB | Curved Blade

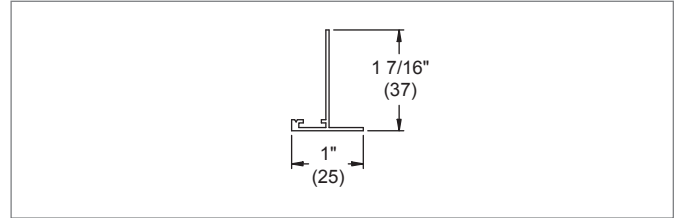
PTBSS, PTBSSFB Accessories for Frame 23 Lay-In T-Bar

PLENUM SLOT DIFFUSERS

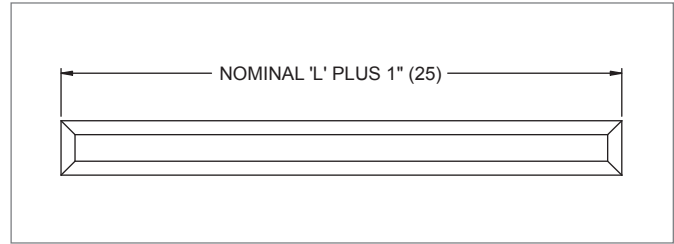
PTBSS, PTBSSFB, PLASTER FRAME ASSEMBLY



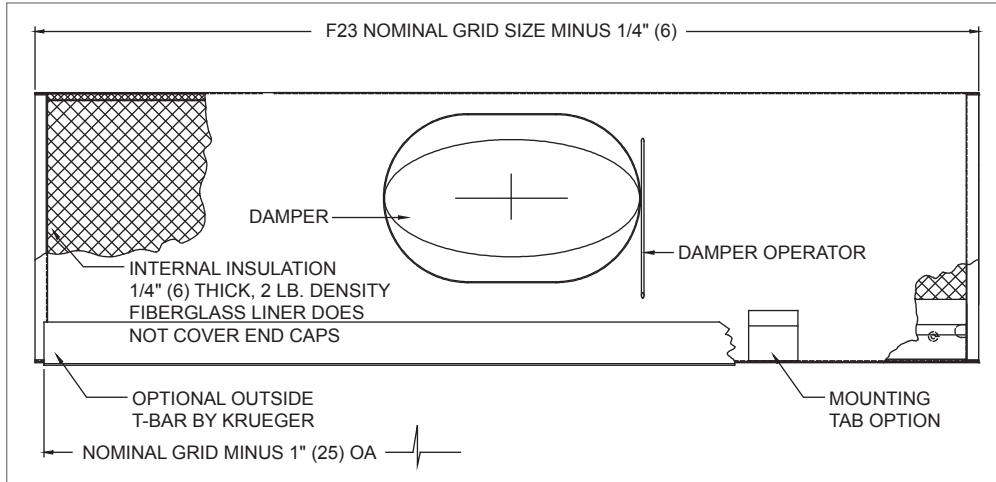
PTBSS, PTBSSFB, PLASTER FRAME ADAPTER, CROSS SECTION



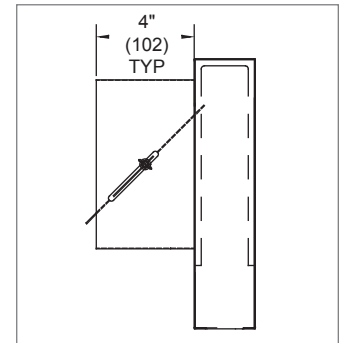
PTBSS/PTBSSFB/PFTBS, PLASTER FRAME, FACE VIEW



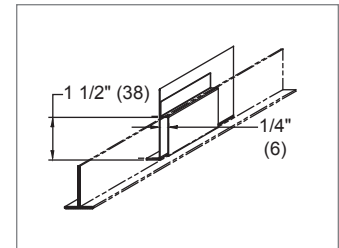
PTBSS, PTBSSFB, CENTER NOTCH DETAIL (CN)



PTBSS, PTBSSFB, QUADRANT DAMPER (QD)



PTBSS, PTBSSFB, MOUNTING TABS (MTT)

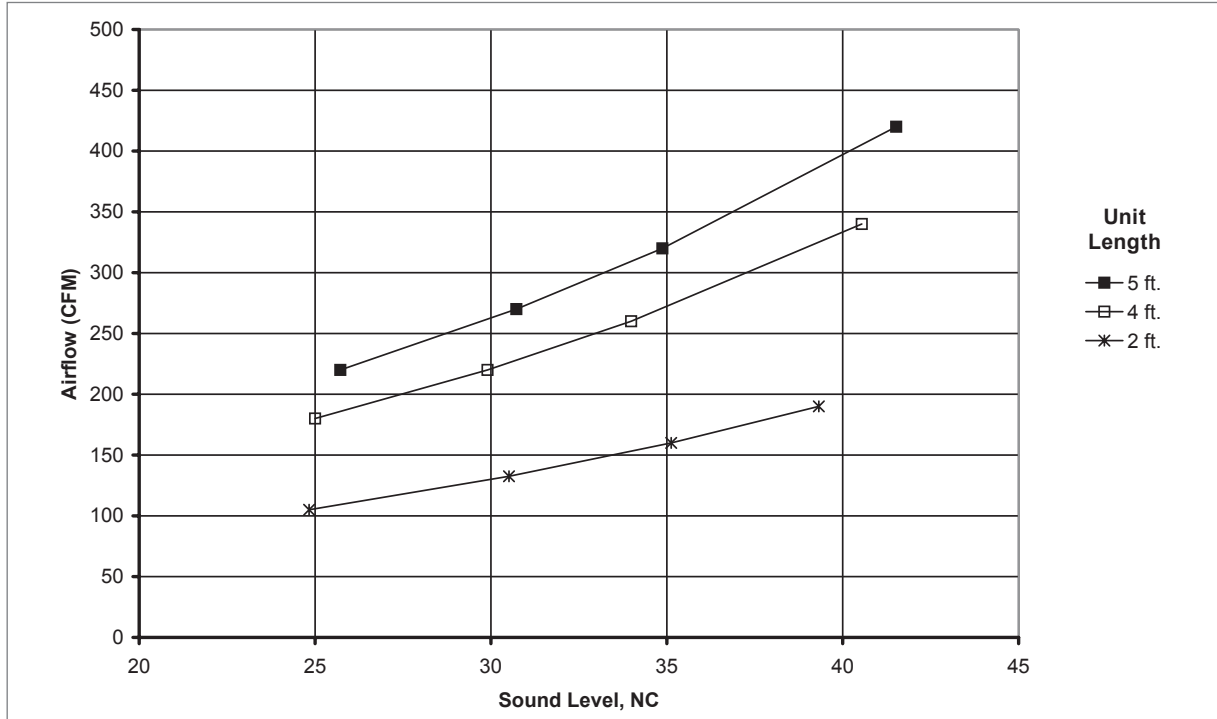


NOTES: Dimensions in parentheses are mm.
MTT1 uses mounting tabs opposite of inlet. MTT2 uses mounting tabs on both sides.
CN = Center Notch; CNT1 = CN+MTT1; CNT2 = CN+MTT2

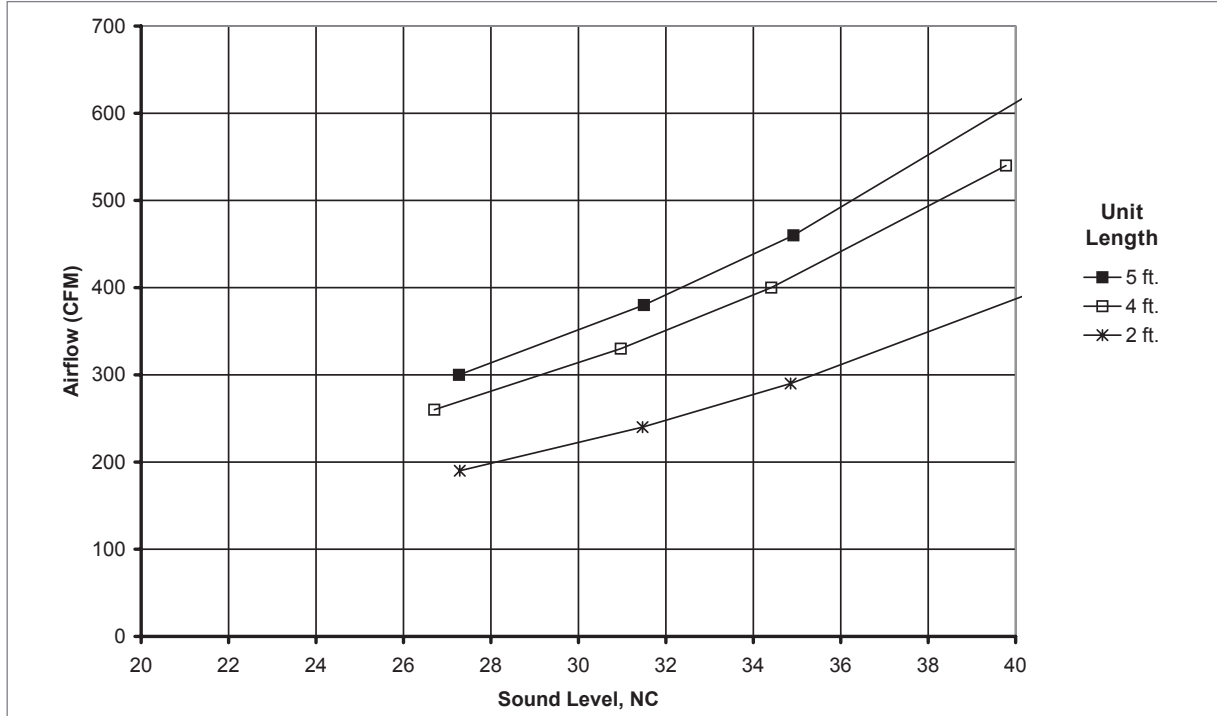
P
T
B
S
S
-
P
T
B
S
S
F
B

PTBSS, PTBSSFB Reference Charts

AIRFLOW VS. NC LEVEL: PTBSS, PTBSSFB, 1" SLOT WIDTH, 1-SLOT, 8" OVAL INLET

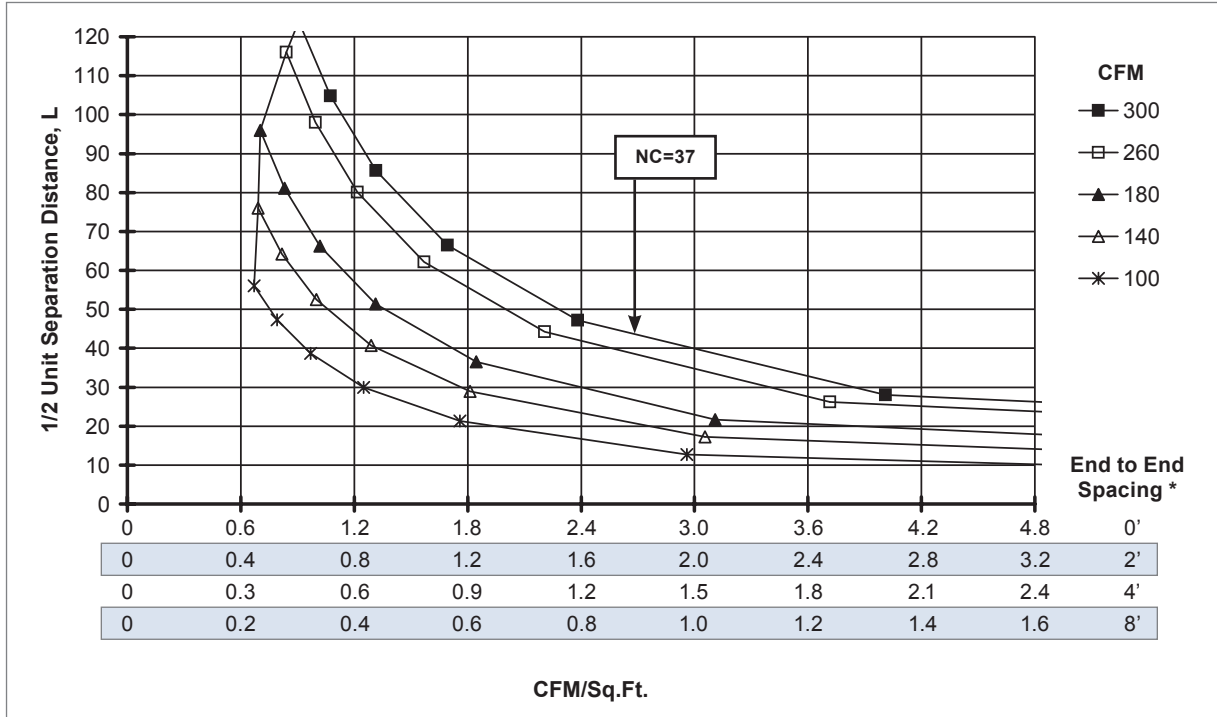


AIRFLOW VS. NC LEVEL: PTBSS, PTBSSFB, 1 1/2" SLOT WIDTH, 2-SLOT, 8" OVAL INLET

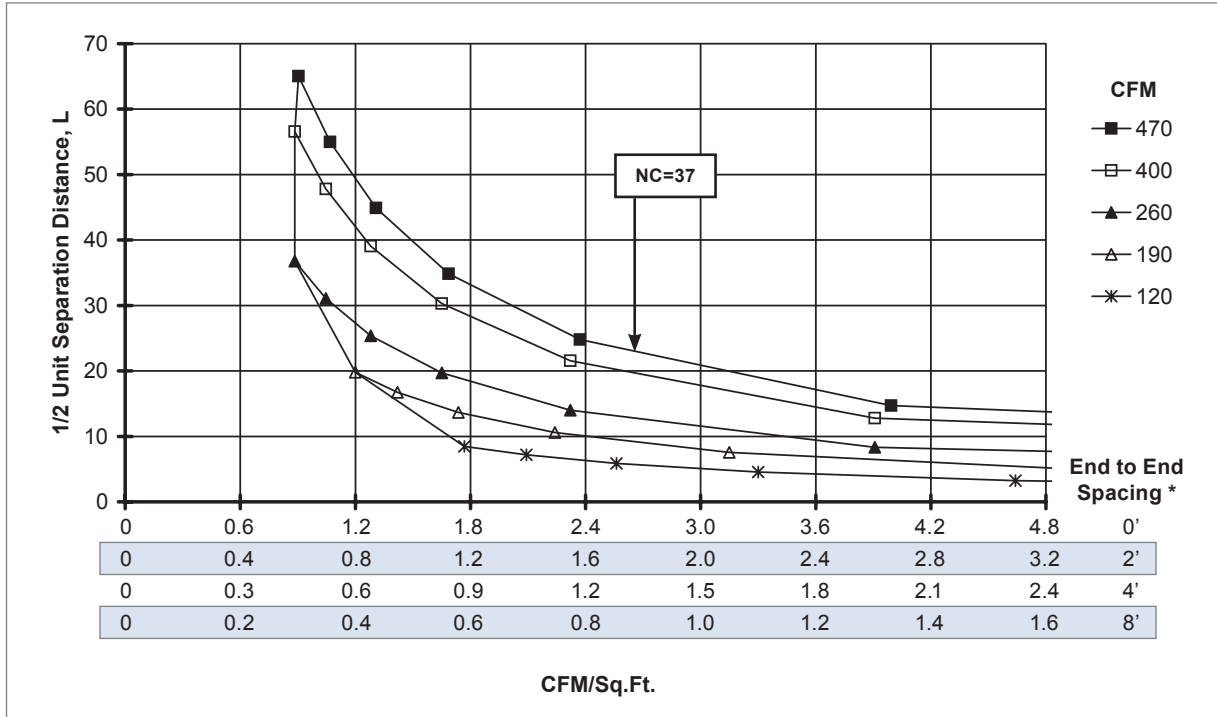


PLENUM SLOT DIFFUSERS

PTBSS - PTBSSFB

PTBSS, PTBSSFB Reference Charts: Horizontal Throw, 4 ft. Length
DIFFUSER SPACING FOR 80% ADPI: PTBSS, PTBSSFB, 1" SLOT WIDTH, 1-SLOT, 8" OVAL INLET, 1-WAY


PLENUM SLOT DIFFUSERS

DIFFUSER SPACING FOR 80% ADPI: PTBSS, PTBSSFB, 1 1/2" SLOT WIDTH, 2-SLOT, 8" OVAL INLET, 2-WAY

 P
T
B
S
S
-
P
T
B
S
S
F
B

NOTES: Charts are at 20 BTUH/ft² loads.

See the Engineering section of this catalog for instructions on how to read these charts and additional ADPI information.

* Separation distance in feet between active supply sections discharging in similar directions.

PTBSS, PTBSSFB Performance Data: Horizontal Throw

IP/METRIC DATA: PTBSS, PTBSSFB, 1" SLOT WIDTH, 1-SLOT (NO DAMPER)

PLENUM SLOT DIFFUSERS

| | Linear Length | IP Data | | | | | NC | Metric Data | | | | Octave Band, dB | | | | | | |
|----------------|---------------|----------|----------|-------|--------------|--------------|-----|-------------|------|-------------------|--------------------|-----------------|----|----|----|----|----|--|
| | | Air Flow | Pressure | | 1-Way Throw | Air Flow | | Pressure | | 1-Way Throw | 2 | 3 | 4 | 5 | 6 | 7 | | |
| | | | Ps | Pt | | | | Ps | Pt | | | | | | | | | |
| | | CFM | "WG | "WG | ft | L/s | | Pa | Pa | m | | | | | | | | |
| 1" Slot Width | 2' | 50 | 0.018 | 0.023 | 5 - 10 - 18 | - | 24 | 4.6 | 5.7 | 1.4 - 3.0 - 5.5 | 33 | 23 | 11 | - | - | - | | |
| | | 95 | 0.066 | 0.083 | 12 - 18 - 25 | 25 | 45 | 16.5 | 20.5 | 3.7 - 5.3 - 7.5 | 39 | 36 | 27 | 19 | 15 | - | | |
| | | 118 | 0.102 | 0.126 | 15 - 20 - 28 | 30 | 55 | 25.3 | 31.4 | 4.6 - 5.9 - 8.4 | 40 | 41 | 33 | 26 | 22 | 16 | | |
| | | 140 | 0.144 | 0.179 | 17 - 21 - 30 | 35 | 66 | 35.9 | 44.6 | 5.3 - 6.5 - 9.2 | 42 | 44 | 37 | 31 | 27 | 21 | | |
| | | 185 | 0.252 | 0.313 | 20 - 24 - 35 | 41 | 87 | 62.7 | 77.9 | 6.1 - 7.4 - 10.5 | 44 | 50 | 44 | 40 | 36 | 30 | | |
| | 6" Oval Inlet | 4 | 80 | 0.021 | 0.033 | 4 - 9 - 22 | - | 38 | 5.3 | 8.1 | 1.2 - 2.8 - 6.7 | 34 | 24 | - | - | - | - | |
| | | | 155 | 0.079 | 0.122 | 14 - 21 - 32 | 24 | 73 | 19.7 | 30.4 | 4.3 - 6.5 - 9.6 | 39 | 37 | 25 | 18 | 12 | - | |
| | | | 193 | 0.122 | 0.188 | 18 - 25 - 35 | 29 | 91 | 30.4 | 46.9 | 5.4 - 7.6 - 10.7 | 41 | 42 | 30 | 24 | 19 | 12 | |
| | | | 230 | 0.174 | 0.269 | 21 - 27 - 39 | 34 | 109 | 43.4 | 66.9 | 6.4 - 8.3 - 11.7 | 43 | 46 | 35 | 30 | 25 | 18 | |
| | | | 305 | 0.307 | 0.473 | 26 - 31 - 44 | 41 | 144 | 76.3 | 117.7 | 7.8 - 9.6 - 13.5 | 45 | 51 | 42 | 38 | 33 | 27 | |
| | 5' | 5' | 90 | 0.022 | 0.037 | 4 - 8 - 22 | - | 42 | 5.5 | 9.1 | 1.1 - 2.5 - 6.7 | 34 | 23 | - | - | - | - | |
| | | | 180 | 0.089 | 0.146 | 15 - 22 - 34 | 24 | 85 | 22.0 | 36.5 | 4.5 - 6.7 - 10.4 | 40 | 38 | 24 | 17 | 11 | - | |
| | | | 225 | 0.138 | 0.229 | 18 - 27 - 38 | 29 | 106 | 34.4 | 57.0 | 5.6 - 8.2 - 11.6 | 42 | 42 | 29 | 24 | 18 | 11 | |
| | | | 270 | 0.199 | 0.329 | 22 - 30 - 42 | 33 | 127 | 49.6 | 82.0 | 6.7 - 9.0 - 12.7 | 43 | 46 | 34 | 29 | 24 | 17 | |
| | | | 360 | 0.354 | 0.586 | 28 - 34 - 48 | 40 | 170 | 88.2 | 145.8 | 8.5 - 10.4 - 14.7 | 45 | 52 | 42 | 38 | 33 | 26 | |
| 8" Oval Inlet | 2' | 50 | 0.016 | 0.018 | 5 - 10 - 18 | - | 24 | 4.1 | 4.5 | 1.4 - 3.0 - 5.5 | 32 | 19 | - | - | - | - | | |
| | | 105 | 0.072 | 0.080 | 14 - 18 - 26 | 25 | 50 | 17.9 | 19.8 | 4.1 - 5.6 - 7.9 | 38 | 35 | 28 | 20 | 16 | - | | |
| | | 133 | 0.115 | 0.127 | 17 - 21 - 29 | 31 | 63 | 28.6 | 31.6 | 5.1 - 6.3 - 8.9 | 40 | 39 | 34 | 27 | 23 | 17 | | |
| | | 160 | 0.167 | 0.185 | 19 - 23 - 32 | 35 | 76 | 41.6 | 46.0 | 5.7 - 6.9 - 9.8 | 41 | 43 | 39 | 32 | 29 | 23 | | |
| | | 190 | 0.236 | 0.261 | 20 - 25 - 35 | 39 | 90 | 58.7 | 64.9 | 6.2 - 7.5 - 10.7 | 43 | 47 | 43 | 37 | 35 | 29 | | |
| | 4' | 4' | 100 | 0.021 | 0.028 | 6 - 14 - 25 | - | 47 | 5.3 | 7.0 | 1.9 - 4.2 - 7.7 | 34 | 25 | 12 | - | - | - | |
| | | | 180 | 0.069 | 0.091 | 16 - 24 - 34 | 25 | 85 | 17.1 | 22.6 | 5.0 - 7.3 - 10.4 | 39 | 37 | 27 | 19 | 15 | - | |
| | | | 220 | 0.102 | 0.136 | 20 - 27 - 38 | 30 | 104 | 25.5 | 33.8 | 6.1 - 8.1 - 11.5 | 41 | 41 | 32 | 25 | 21 | 15 | |
| | | | 260 | 0.143 | 0.190 | 24 - 29 - 41 | 34 | 123 | 35.6 | 47.2 | 7.2 - 8.8 - 12.5 | 42 | 44 | 36 | 30 | 26 | 20 | |
| | | | 340 | 0.245 | 0.324 | 27 - 33 - 47 | 41 | 160 | 60.9 | 80.8 | 8.2 - 10.1 - 14.3 | 44 | 50 | 43 | 38 | 35 | 28 | |
| | 5' | 5' | 120 | 0.024 | 0.033 | 7 - 15 - 28 | - | 57 | 5.9 | 8.3 | 2.0 - 4.5 - 8.5 | 35 | 26 | 12 | - | - | - | |
| | | | 220 | 0.079 | 0.112 | 18 - 27 - 38 | 26 | 104 | 19.7 | 28.0 | 5.5 - 8.1 - 11.5 | 40 | 38 | 27 | 20 | 15 | - | |
| | | | 270 | 0.119 | 0.169 | 22 - 30 - 42 | 31 | 127 | 29.6 | 42.2 | 6.7 - 9.0 - 12.7 | 41 | 42 | 32 | 26 | 21 | 15 | |
| | | | 320 | 0.167 | 0.238 | 26 - 32 - 46 | 35 | 151 | 41.6 | 59.2 | 8.0 - 9.8 - 13.8 | 43 | 46 | 37 | 31 | 27 | 20 | |
| | | | 420 | 0.288 | 0.410 | 30 - 37 - 52 | 42 | 198 | 71.7 | 102.0 | 9.2 - 11.2 - 15.9 | 45 | 51 | 44 | 39 | 35 | 29 | |
| 10" Oval Inlet | 2' | 60 | 0.027 | 0.028 | 7 - 12 - 20 | - | 28 | 6.6 | 7.0 | 2.0 - 3.5 - 6.0 | 32 | 21 | 12 | - | - | - | | |
| | | 110 | 0.090 | 0.094 | 14 - 19 - 27 | 24 | 52 | 22.3 | 23.4 | 4.3 - 5.7 - 8.1 | 37 | 33 | 28 | 19 | 16 | - | | |
| | | 135 | 0.135 | 0.142 | 17 - 21 - 30 | 29 | 64 | 33.6 | 35.3 | 5.2 - 6.4 - 9.0 | 39 | 37 | 33 | 25 | 22 | 17 | | |
| | | 160 | 0.190 | 0.199 | 19 - 23 - 32 | 33 | 76 | 47.3 | 49.6 | 5.7 - 6.9 - 9.8 | 40 | 41 | 37 | 30 | 28 | 22 | | |
| | | 210 | 0.327 | 0.343 | 21 - 26 - 37 | 40 | 99 | 81.4 | 85.4 | 6.5 - 7.9 - 11.2 | 42 | 46 | 44 | 38 | 36 | 31 | | |
| | 4' | 4' | 100 | 0.017 | 0.021 | 6 - 14 - 25 | - | 47 | 4.4 | 5.3 | 1.9 - 4.2 - 7.7 | 33 | 22 | - | - | - | - | |
| | | | 145 | 0.037 | 0.044 | 13 - 20 - 31 | 18 | 68 | 9.2 | 11.1 | 4.0 - 6.1 - 9.3 | 36 | 30 | 20 | 11 | - | - | |
| | | | 235 | 0.097 | 0.117 | 22 - 28 - 39 | 30 | 111 | 24.0 | 29.0 | 6.5 - 8.4 - 11.9 | 40 | 40 | 32 | 25 | 21 | 15 | |
| | | | 280 | 0.137 | 0.166 | 25 - 30 - 43 | 34 | 132 | 34.1 | 41.2 | 7.5 - 9.2 - 12.9 | 41 | 43 | 37 | 30 | 27 | 21 | |
| | | | 370 | 0.239 | 0.289 | 28 - 35 - 49 | 41 | 175 | 59.6 | 72.0 | 8.6 - 10.5 - 14.9 | 44 | 49 | 44 | 39 | 36 | 30 | |
| | 5' | 5' | 120 | 0.018 | 0.023 | 7 - 15 - 28 | - | 57 | 4.5 | 5.8 | 2.0 - 4.5 - 8.5 | 33 | 23 | - | - | - | - | |
| | | | 220 | 0.061 | 0.079 | 18 - 27 - 38 | 24 | 104 | 15.2 | 19.6 | 5.5 - 8.1 - 11.5 | 38 | 36 | 26 | 18 | 13 | - | |
| | | | 270 | 0.092 | 0.119 | 22 - 30 - 42 | 29 | 127 | 22.9 | 29.5 | 6.7 - 9.0 - 12.7 | 40 | 40 | 31 | 24 | 20 | 14 | |
| | | | 320 | 0.129 | 0.167 | 26 - 32 - 46 | 33 | 151 | 32.2 | 41.5 | 8.0 - 9.8 - 13.8 | 41 | 43 | 35 | 29 | 25 | 19 | |
| | | | 420 | 0.223 | 0.287 | 30 - 37 - 52 | 40 | 198 | 55.5 | 71.4 | 9.2 - 11.2 - 15.9 | 44 | 49 | 42 | 37 | 34 | 28 | |
| 12" Oval Inlet | 4' | 120 | 0.024 | 0.026 | 9 - 16 - 28 | - | 57 | 6.0 | 6.5 | 2.8 - 5.0 - 8.5 | 33 | 22 | 13 | - | - | - | | |
| | | 220 | 0.081 | 0.088 | 20 - 27 - 38 | 25 | 104 | 20.2 | 21.8 | 6.1 - 8.1 - 11.5 | 38 | 35 | 29 | 20 | 17 | 11 | | |
| | | 270 | 0.122 | 0.132 | 24 - 30 - 42 | 30 | 127 | 30.4 | 32.8 | 7.3 - 9.0 - 12.7 | 39 | 39 | 34 | 26 | 23 | 17 | | |
| | | 320 | 0.171 | 0.185 | 26 - 32 - 46 | 34 | 151 | 42.7 | 46.1 | 8.0 - 9.8 - 13.8 | 41 | 42 | 38 | 31 | 29 | 23 | | |
| | | 420 | 0.295 | 0.319 | 30 - 37 - 52 | 41 | 198 | 73.5 | 79.4 | 9.2 - 11.2 - 15.9 | 43 | 48 | 45 | 40 | 37 | 32 | | |
| | 5' | 5' | 140 | 0.020 | 0.023 | 9 - 17 - 30 | - | 66 | 5.1 | 5.8 | 2.7 - 5.2 - 9.2 | 33 | 22 | 12 | - | - | - | |
| | | | 260 | 0.071 | 0.080 | 21 - 29 - 41 | 25 | 123 | 17.6 | 19.8 | 6.5 - 8.8 - 12.5 | 38 | 35 | 28 | 20 | 16 | - | |
| | | | 320 | 0.107 | 0.121 | 26 - 32 - 46 | 30 | 151 | 26.6 | 30.1 | 8.0 - 9.8 - 13.8 | 40 | 40 | 33 | 26 | 23 | 17 | |
| | | | 380 | 0.151 | 0.170 | 29 - 35 - 50 | 34 | 179 | 37.5 | 42.4 | 8.7 - 10.7 - 15.1 | 41 | 43 | 38 | 31 | 28 | 22 | |
| | | | 500 | 0.261 | 0.295 | 33 - 40 - 57 | 41 | 236 | 65.0 | 73.4 | 10.0 - 12.2 - 17.3 | 43 | 49 | 45 | 40 | 37 | 31 | |

NOTE: See notes on page F1-59.

© KRUEGER 2012

PTBSS, PTBSSFB Performance Data: Horizontal Throw

IP/METRIC DATA: PTBSS, PTBSSFB, 1" SLOT WIDTH, 2-SLOT (NO DAMPER)

| | Linear Length | IP Data | | | | NC | Metric Data | | | | Octave Band, dB | | | | | | |
|----------------|----------------|----------|----------|--------------|--------------|--------------|-------------|----------|--------------------|--------------------|--------------------|----|----|----|----|----|----|
| | | Air Flow | Pressure | | 1-Way Throw | | Air Flow | Pressure | | 1-Way Throw | 2 | 3 | 4 | 5 | 6 | 7 | |
| | | | Ps | Pt | | | | Ps | Pt | | | | | | | | m |
| | | CFM | "WG | "WG | ft | | L/s | Pa | Pa | m | | | | | | | |
| 1" Slot Width | 2' | 90 | 0.027 | 0.041 | 5 - 12 - 24 | - | 42 | 6.6 | 10.3 | 1.6 - 3.5 - 7.3 | 35 | 26 | 11 | - | - | - | |
| | | 160 | 0.084 | 0.130 | 15 - 22 - 32 | 25 | 76 | 21.0 | 32.4 | 4.5 - 6.7 - 9.8 | 40 | 38 | 26 | 19 | 13 | - | |
| | | 195 | 0.125 | 0.193 | 18 - 25 - 36 | 30 | 92 | 31.2 | 48.1 | 5.4 - 7.6 - 10.8 | 41 | 42 | 31 | 25 | 19 | 13 | |
| | | 230 | 0.174 | 0.269 | 21 - 27 - 39 | 34 | 109 | 43.4 | 66.9 | 6.4 - 8.3 - 11.7 | 43 | 46 | 35 | 30 | 25 | 18 | |
| | | 300 | 0.297 | 0.457 | 25 - 31 - 44 | 40 | 142 | 73.9 | 113.9 | 7.7 - 9.5 - 13.4 | 45 | 51 | 42 | 38 | 33 | 27 | |
| 6" Oval Inlet | 4' | 150 | 0.045 | 0.085 | 5 - 11 - 29 | - | 71 | 11.2 | 21.2 | 1.5 - 3.5 - 8.9 | 36 | 28 | - | - | - | - | |
| | | 270 | 0.146 | 0.276 | 16 - 26 - 42 | 25 | 127 | 36.3 | 68.8 | 5.0 - 8.0 - 12.7 | 41 | 40 | 24 | 18 | 11 | - | |
| | | 330 | 0.218 | 0.413 | 21 - 32 - 46 | 30 | 156 | 54.3 | 102.7 | 6.5 - 9.7 - 14.1 | 43 | 44 | 29 | 24 | 17 | 11 | |
| | | 390 | 0.305 | 0.576 | 25 - 36 - 50 | 34 | 184 | 75.8 | 143.5 | 7.7 - 10.8 - 15.3 | 44 | 47 | 33 | 29 | 23 | 16 | |
| | | 510 | 0.521 | 0.986 | 33 - 41 - 57 | 40 | 241 | 129.7 | 245.4 | 10.0 - 12.4 - 17.5 | 46 | 53 | 40 | 37 | 31 | 24 | |
| 1" Slot Width | 2' | 90 | 0.017 | 0.023 | 5 - 12 - 24 | - | 42 | 4.3 | 5.7 | 1.6 - 3.5 - 7.3 | 33 | 22 | - | - | - | - | |
| | | 170 | 0.061 | 0.081 | 16 - 23 - 33 | 24 | 80 | 15.2 | 20.2 | 4.7 - 7.1 - 10.1 | 38 | 36 | 25 | 17 | 13 | - | |
| | | 210 | 0.093 | 0.124 | 19 - 26 - 37 | 29 | 99 | 23.2 | 30.8 | 5.8 - 7.9 - 11.2 | 40 | 40 | 31 | 24 | 19 | 13 | |
| | | 250 | 0.132 | 0.175 | 23 - 28 - 40 | 33 | 118 | 32.9 | 43.7 | 7.0 - 8.7 - 12.2 | 42 | 44 | 35 | 29 | 25 | 19 | |
| | | 330 | 0.230 | 0.306 | 27 - 33 - 46 | 40 | 156 | 57.4 | 76.1 | 8.1 - 9.9 - 14.1 | 44 | 49 | 42 | 37 | 34 | 28 | |
| | 8" Oval Inlet | 4' | 170 | 0.031 | 0.051 | 7 - 15 - 33 | - | 80 | 7.6 | 12.6 | 2.0 - 4.5 - 10.0 | 35 | 27 | - | - | - | - |
| | | | 300 | 0.095 | 0.157 | 19 - 29 - 44 | 24 | 142 | 23.7 | 39.2 | 5.9 - 8.9 - 13.4 | 40 | 38 | 25 | 18 | 12 | - |
| | | | 365 | 0.141 | 0.233 | 24 - 34 - 49 | 29 | 172 | 35.1 | 58.0 | 7.2 - 10.5 - 14.8 | 42 | 42 | 30 | 24 | 18 | 12 |
| | | | 430 | 0.196 | 0.323 | 28 - 37 - 53 | 33 | 203 | 48.8 | 80.5 | 8.5 - 11.3 - 16.0 | 43 | 46 | 34 | 29 | 23 | 17 |
| | | | 560 | 0.332 | 0.548 | 35 - 43 - 60 | 40 | 264 | 82.7 | 136.5 | 10.6 - 12.9 - 18.3 | 45 | 51 | 41 | 37 | 32 | 25 |
| 5' | 190 | 0.033 | 0.057 | 6 - 13 - 33 | - | 90 | 8.1 | 14.3 | 1.8 - 4.0 - 10.0 | 35 | 26 | - | - | - | - | | |
| | 350 | 0.110 | 0.195 | 20 - 30 - 48 | 24 | 165 | 27.5 | 48.5 | 6.0 - 9.2 - 14.5 | 40 | 39 | 24 | 17 | 11 | - | | |
| | 430 | 0.167 | 0.294 | 25 - 37 - 53 | 29 | 203 | 41.5 | 73.2 | 7.6 - 11.3 - 16.0 | 42 | 43 | 29 | 24 | 18 | 11 | | |
| | 510 | 0.234 | 0.414 | 30 - 41 - 57 | 33 | 241 | 58.4 | 103.0 | 9.0 - 12.4 - 17.5 | 43 | 46 | 34 | 29 | 23 | 16 | | |
| | 670 | 0.405 | 0.714 | 38 - 47 - 66 | 40 | 316 | 100.8 | 177.8 | 11.6 - 14.2 - 20.0 | 46 | 52 | 41 | 37 | 31 | 25 | | |
| 1" Slot Width | 2' | 100 | 0.017 | 0.021 | 6 - 14 - 25 | - | 47 | 4.4 | 5.3 | 1.9 - 4.2 - 7.7 | 33 | 22 | - | - | - | - | |
| | | 190 | 0.063 | 0.076 | 17 - 25 - 35 | 24 | 90 | 15.7 | 19.0 | 5.3 - 7.5 - 10.7 | 38 | 35 | 27 | 19 | 15 | - | |
| | | 235 | 0.097 | 0.117 | 22 - 28 - 39 | 30 | 111 | 24.0 | 29.0 | 6.5 - 8.4 - 11.9 | 40 | 40 | 32 | 25 | 21 | 15 | |
| | | 280 | 0.137 | 0.166 | 25 - 30 - 43 | 34 | 132 | 34.1 | 41.2 | 7.5 - 9.2 - 12.9 | 41 | 43 | 37 | 30 | 27 | 21 | |
| | | 370 | 0.239 | 0.289 | 28 - 35 - 49 | 41 | 175 | 59.6 | 72.0 | 8.6 - 10.5 - 14.9 | 44 | 49 | 44 | 39 | 36 | 30 | |
| | 10" Oval Inlet | 4' | 175 | 0.023 | 0.034 | 7 - 16 - 34 | - | 83 | 5.6 | 8.4 | 2.1 - 4.7 - 10.2 | 34 | 25 | - | - | - | - |
| | | | 258 | 0.049 | 0.073 | 15 - 25 - 41 | 19 | 122 | 12.2 | 18.2 | 4.6 - 7.6 - 12.4 | 38 | 33 | 20 | 11 | - | - |
| | | | 423 | 0.132 | 0.196 | 27 - 37 - 52 | 31 | 199 | 32.8 | 48.9 | 8.3 - 11.2 - 15.9 | 42 | 43 | 32 | 26 | 21 | 15 |
| | | | 505 | 0.188 | 0.281 | 33 - 40 - 57 | 35 | 238 | 46.8 | 69.9 | 9.9 - 12.3 - 17.4 | 43 | 47 | 37 | 32 | 27 | 21 |
| | | | 670 | 0.331 | 0.494 | 38 - 47 - 66 | 42 | 316 | 82.4 | 123.0 | 11.6 - 14.2 - 20.0 | 45 | 52 | 44 | 40 | 36 | 30 |
| 5' | 200 | 0.024 | 0.039 | 6 - 15 - 35 | - | 94 | 6.0 | 9.6 | 2.0 - 4.4 - 10.6 | 34 | 25 | - | - | - | - | | |
| | 380 | 0.087 | 0.139 | 22 - 33 - 50 | 24 | 179 | 21.7 | 34.7 | 6.7 - 10.0 - 15.1 | 40 | 38 | 25 | 18 | 12 | - | | |
| | 470 | 0.133 | 0.213 | 27 - 39 - 55 | 29 | 222 | 33.2 | 53.1 | 8.3 - 11.9 - 16.8 | 41 | 42 | 30 | 24 | 19 | 12 | | |
| | 560 | 0.189 | 0.303 | 32 - 43 - 60 | 34 | 264 | 47.1 | 75.4 | 9.9 - 12.9 - 18.3 | 43 | 46 | 35 | 29 | 24 | 18 | | |
| | 740 | 0.330 | 0.529 | 40 - 49 - 69 | 41 | 349 | 82.2 | 131.7 | 12.2 - 14.9 - 21.1 | 45 | 52 | 42 | 38 | 33 | 27 | | |
| 1" Slot Width | 4' | 200 | 0.019 | 0.025 | 9 - 19 - 36 | - | 94 | 4.8 | 6.2 | 2.7 - 5.9 - 10.9 | 34 | 24 | 11 | - | - | - | |
| | | 370 | 0.067 | 0.085 | 24 - 35 - 49 | 25 | 175 | 16.6 | 21.2 | 7.3 - 10.5 - 14.9 | 39 | 36 | 27 | 19 | 15 | - | |
| | | 455 | 0.101 | 0.129 | 29 - 38 - 54 | 30 | 215 | 25.1 | 32.0 | 9.0 - 11.7 - 16.5 | 40 | 41 | 32 | 25 | 21 | 15 | |
| | | 540 | 0.142 | 0.181 | 34 - 42 - 59 | 34 | 255 | 35.3 | 45.1 | 10.4 - 12.7 - 18.0 | 42 | 44 | 37 | 31 | 27 | 21 | |
| | | 710 | 0.245 | 0.313 | 39 - 48 - 68 | 41 | 335 | 61.0 | 77.9 | 11.9 - 14.6 - 20.6 | 44 | 50 | 44 | 39 | 35 | 29 | |
| 12" Oval Inlet | 5' | 225 | 0.019 | 0.025 | 8 - 18 - 38 | - | 106 | 4.6 | 6.3 | 2.5 - 5.6 - 11.6 | 34 | 23 | - | - | - | - | |
| | | 425 | 0.066 | 0.091 | 25 - 37 - 52 | 24 | 201 | 16.5 | 22.5 | 7.5 - 11.2 - 16.0 | 39 | 36 | 26 | 18 | 13 | - | |
| | | 525 | 0.101 | 0.138 | 30 - 41 - 58 | 29 | 248 | 25.2 | 34.4 | 9.2 - 12.5 - 17.7 | 41 | 41 | 31 | 24 | 20 | 13 | |
| | | 625 | 0.143 | 0.196 | 36 - 45 - 64 | 34 | 295 | 35.6 | 48.8 | 11.0 - 13.7 - 19.3 | 42 | 44 | 36 | 30 | 25 | 19 | |
| | | 825 | 0.249 | 0.341 | 42 - 52 - 73 | 40 | 389 | 62.1 | 85.0 | 12.8 - 15.7 - 22.2 | 44 | 50 | 43 | 38 | 34 | 28 | |

NOTES: Throw values are given for terminal velocities of 150, 100, and 50 FPM (0.75, 0.50, and 0.25 m/s). Throw values are given for isothermal conditions. Airflow is given for the length of the unit. NC values are based on octave band 2 - 7 sound power levels minus a room absorption of 10dB, re10⁻¹² Watts. Dash in space denotes a NC or dB value of less than 10. Data was obtained from tests conducted in accordance with ANSI/ASHRAE Standard 70, ISO Standard 5219, and ISO Standard 3741. See selection software for performance data not shown, including octave band data.

PTBSS, PTBSSFB Performance Data: Horizontal Throw

IP/METRIC DATA: PTBSS, PTBSSFB, 1 1/2" SLOT WIDTH, 1-SLOT (NO DAMPER)

PLENUM SLOT DIFFUSERS

| | Linear Length | IP Data | | | | | NC | Metric Data | | | | | Octave Band, dB | | | | | | |
|-------------------|-------------------|----------|----------|-------|--------------|--------------|-----|-------------|-------|------------------|------------------|----|-----------------|----|----|----|----|--|--|
| | | Air Flow | Pressure | | 1-Way Throw | Air Flow | | Pressure | | 1-Way Throw | 2 | 3 | 4 | 5 | 6 | 7 | | | |
| | | | Ps | Pt | | | | Ps | Pt | | | | | | | | | | |
| | | CFM | "WG | "WG | ft | L/s | | Pa | Pa | m | | | | | | | | | |
| 1 1/2" Slot Width | 2' | 50 | 0.017 | 0.022 | 2 - 4 - 10 | 14 | 24 | 4.3 | 5.4 | 0.5 - 1.2 - 3.0 | 44 | 35 | 28 | 20 | 16 | 12 | | | |
| | | 100 | 0.069 | 0.087 | 7 - 10 - 16 | 26 | 47 | 17.2 | 21.7 | 2.0 - 3.0 - 4.7 | 48 | 47 | 41 | 32 | 29 | 24 | | | |
| | | 125 | 0.108 | 0.136 | 8 - 12 - 17 | 30 | 59 | 26.9 | 33.9 | 2.5 - 3.7 - 5.3 | 49 | 50 | 45 | 36 | 34 | 28 | | | |
| | | 150 | 0.156 | 0.196 | 10 - 13 - 19 | 34 | 71 | 38.8 | 48.8 | 3.0 - 4.1 - 5.8 | 50 | 53 | 48 | 40 | 37 | 31 | | | |
| | 6" Oval Inlet | 4' | 200 | 0.277 | 0.348 | 13 - 16 - 22 | 39 | 94 | 68.9 | 86.7 | 3.9 - 4.7 - 6.7 | 52 | 58 | 54 | 45 | 43 | 36 | | |
| | | | 75 | 0.011 | 0.021 | 1 - 3 - 11 | 15 | 35 | 2.7 | 5.2 | 0.4 - 1.0 - 3.2 | 43 | 37 | 29 | 22 | 18 | 14 | | |
| | | | 145 | 0.041 | 0.079 | 5 - 10 - 19 | 27 | 68 | 10.2 | 19.6 | 1.6 - 3.1 - 5.7 | 47 | 48 | 41 | 34 | 31 | 26 | | |
| | | | 180 | 0.063 | 0.121 | 8 - 13 - 21 | 31 | 85 | 15.8 | 30.2 | 2.5 - 3.8 - 6.3 | 48 | 51 | 45 | 38 | 35 | 29 | | |
| | 5' | 4' | 215 | 0.090 | 0.173 | 10 - 15 - 23 | 34 | 101 | 22.5 | 43.1 | 3.1 - 4.6 - 6.9 | 49 | 54 | 48 | 41 | 39 | 32 | | |
| | | | 285 | 0.159 | 0.304 | 13 - 19 - 26 | 39 | 135 | 39.6 | 75.7 | 4.1 - 5.6 - 8.0 | 51 | 59 | 54 | 46 | 44 | 37 | | |
| | | | 85 | 0.010 | 0.023 | 1 - 3 - 11 | 15 | 40 | 2.5 | 5.7 | 0.4 - 0.9 - 3.2 | 43 | 37 | 29 | 23 | 19 | 15 | | |
| | | | 165 | 0.037 | 0.086 | 5 - 10 - 20 | 27 | 78 | 9.3 | 21.4 | 1.5 - 3.1 - 6.1 | 47 | 48 | 41 | 35 | 32 | 26 | | |
| 1 1/2" Slot Width | 2' | 205 | 0.058 | 0.133 | 8 - 13 - 22 | 31 | 97 | 14.4 | 33.1 | 2.3 - 3.9 - 6.8 | 48 | 52 | 45 | 38 | 36 | 30 | | | |
| | | 245 | 0.083 | 0.190 | 10 - 15 - 24 | 34 | 116 | 20.6 | 47.3 | 3.1 - 4.7 - 7.4 | 49 | 55 | 49 | 42 | 39 | 33 | | | |
| | | 325 | 0.145 | 0.334 | 14 - 20 - 28 | 39 | 153 | 36.2 | 83.2 | 4.1 - 6.0 - 8.5 | 51 | 59 | 54 | 47 | 45 | 38 | | | |
| | | 60 | 0.031 | 0.034 | 3 - 6 - 12 | 13 | 28 | 7.8 | 8.4 | 0.8 - 1.7 - 3.6 | 45 | 34 | 27 | 18 | 14 | 11 | | | |
| | 8" Oval Inlet | 4' | 130 | 0.147 | 0.159 | 9 - 13 - 18 | 27 | 61 | 36.7 | 39.6 | 2.6 - 3.8 - 5.4 | 49 | 47 | 41 | 32 | 29 | 24 | | |
| | | | 165 | 0.237 | 0.256 | 11 - 14 - 20 | 31 | 78 | 59.1 | 63.8 | 3.3 - 4.3 - 6.1 | 50 | 51 | 46 | 36 | 34 | 28 | | |
| | | | 200 | 0.349 | 0.376 | 13 - 16 - 22 | 34 | 94 | 86.8 | 93.7 | 3.9 - 4.7 - 6.7 | 51 | 54 | 49 | 40 | 37 | 31 | | |
| | | | 270 | 0.635 | 0.686 | 15 - 18 - 26 | 40 | 127 | 158.2 | 170.7 | 4.5 - 5.5 - 7.8 | 53 | 59 | 55 | 45 | 43 | 37 | | |
| | 5' | 4' | 90 | 0.014 | 0.020 | 2 - 5 - 13 | 14 | 42 | 3.5 | 4.9 | 0.6 - 1.4 - 3.8 | 44 | 35 | 28 | 20 | 16 | 13 | | |
| | | | 180 | 0.056 | 0.078 | 8 - 13 - 21 | 26 | 85 | 13.9 | 19.5 | 2.5 - 3.8 - 6.3 | 48 | 47 | 41 | 33 | 30 | 25 | | |
| | | | 225 | 0.087 | 0.122 | 11 - 16 - 23 | 30 | 106 | 21.8 | 30.5 | 3.2 - 4.8 - 7.1 | 49 | 51 | 45 | 37 | 34 | 28 | | |
| | | | 270 | 0.126 | 0.176 | 13 - 18 - 26 | 34 | 127 | 31.4 | 43.9 | 3.8 - 5.5 - 7.8 | 50 | 54 | 48 | 40 | 38 | 32 | | |
| 5' | 4' | 360 | 0.224 | 0.313 | 17 - 21 - 30 | 39 | 170 | 55.7 | 78.0 | 5.1 - 6.3 - 9.0 | 52 | 58 | 54 | 45 | 43 | 36 | | | |
| | | 100 | 0.012 | 0.018 | 2 - 4 - 13 | 14 | 47 | 2.9 | 4.6 | 0.5 - 1.2 - 3.8 | 43 | 35 | 28 | 20 | 17 | 13 | | | |
| | | 200 | 0.046 | 0.074 | 7 - 13 - 22 | 26 | 94 | 11.5 | 18.3 | 2.2 - 3.8 - 6.7 | 47 | 47 | 41 | 33 | 30 | 25 | | | |
| | | 250 | 0.072 | 0.115 | 10 - 16 - 25 | 30 | 118 | 17.9 | 28.7 | 3.2 - 4.8 - 7.5 | 49 | 51 | 45 | 37 | 34 | 29 | | | |
| 1 1/2" Slot Width | 4' | 300 | 0.104 | 0.166 | 13 - 19 - 27 | 33 | 142 | 25.8 | 41.3 | 3.8 - 5.7 - 8.2 | 50 | 54 | 48 | 40 | 38 | 32 | | | |
| | | 400 | 0.184 | 0.295 | 17 - 22 - 31 | 39 | 189 | 45.9 | 73.4 | 5.1 - 6.7 - 9.5 | 51 | 58 | 54 | 46 | 43 | 37 | | | |
| | | 110 | 0.021 | 0.026 | 3 - 7 - 15 | 15 | 52 | 5.3 | 6.4 | 0.9 - 2.1 - 4.7 | 45 | 36 | 28 | 20 | 17 | 13 | | | |
| | | 165 | 0.048 | 0.058 | 7 - 12 - 20 | 22 | 78 | 12.0 | 14.4 | 2.1 - 3.5 - 6.1 | 47 | 43 | 36 | 28 | 24 | 20 | | | |
| | 10" Oval Inlet | 5' | 275 | 0.133 | 0.161 | 13 - 18 - 26 | 31 | 130 | 33.2 | 40.1 | 3.9 - 5.5 - 7.8 | 50 | 51 | 46 | 37 | 34 | 29 | | |
| | | | 330 | 0.192 | 0.232 | 15 - 20 - 28 | 34 | 156 | 47.8 | 57.7 | 4.7 - 6.1 - 8.6 | 51 | 54 | 49 | 40 | 38 | 32 | | |
| | | | 440 | 0.342 | 0.412 | 19 - 23 - 33 | 39 | 208 | 85.1 | 102.5 | 5.7 - 7.0 - 9.9 | 52 | 59 | 54 | 46 | 43 | 37 | | |
| | | | 120 | 0.016 | 0.021 | 3 - 6 - 15 | 14 | 57 | 3.9 | 5.2 | 0.8 - 1.8 - 4.6 | 44 | 36 | 28 | 20 | 17 | 13 | | |
| | 1 1/2" Slot Width | 4' | 240 | 0.063 | 0.084 | 10 - 15 - 24 | 27 | 113 | 15.8 | 21.0 | 3.1 - 4.6 - 7.3 | 48 | 47 | 41 | 33 | 30 | 25 | | |
| | | | 300 | 0.099 | 0.132 | 13 - 19 - 27 | 31 | 142 | 24.6 | 32.8 | 3.8 - 5.7 - 8.2 | 49 | 51 | 45 | 37 | 34 | 29 | | |
| | | | 360 | 0.143 | 0.190 | 15 - 21 - 30 | 34 | 170 | 35.5 | 47.2 | 4.6 - 6.3 - 9.0 | 50 | 54 | 49 | 40 | 38 | 32 | | |
| | | | 480 | 0.253 | 0.337 | 20 - 24 - 34 | 39 | 227 | 63.1 | 83.9 | 6.0 - 7.3 - 10.4 | 52 | 59 | 54 | 45 | 43 | 37 | | |
| 12" Oval Inlet | | 5' | 140 | 0.049 | 0.051 | 5 - 10 - 18 | 15 | 66 | 12.1 | 12.8 | 1.5 - 3.0 - 5.6 | 45 | 35 | 28 | 20 | 16 | 12 | | |
| | | | 280 | 0.195 | 0.206 | 13 - 18 - 26 | 27 | 132 | 48.6 | 51.2 | 4.0 - 5.6 - 7.9 | 49 | 47 | 41 | 32 | 29 | 24 | | |
| | | | 350 | 0.305 | 0.321 | 16 - 21 - 29 | 31 | 165 | 75.9 | 80.0 | 5.0 - 6.3 - 8.8 | 51 | 51 | 46 | 36 | 33 | 28 | | |
| | | | 420 | 0.439 | 0.463 | 18 - 23 - 32 | 34 | 198 | 109.3 | 115.2 | 5.6 - 6.9 - 9.7 | 52 | 54 | 49 | 39 | 37 | 31 | | |
| 5' | | 4' | 560 | 0.780 | 0.823 | 21 - 26 - 37 | 39 | 264 | 194.3 | 204.8 | 6.5 - 7.9 - 11.2 | 53 | 58 | 54 | 45 | 42 | 36 | | |
| | | | 170 | 0.037 | 0.041 | 5 - 11 - 20 | 16 | 80 | 9.2 | 10.2 | 1.6 - 3.2 - 6.2 | 46 | 37 | 30 | 21 | 18 | 14 | | |
| | | | 330 | 0.140 | 0.155 | 14 - 20 - 28 | 28 | 156 | 34.8 | 38.5 | 4.2 - 6.1 - 8.6 | 49 | 48 | 42 | 33 | 30 | 25 | | |
| | | | 410 | 0.216 | 0.239 | 17 - 22 - 31 | 32 | 193 | 53.7 | 59.4 | 5.2 - 6.8 - 9.6 | 50 | 51 | 46 | 37 | 35 | 29 | | |
| 5' | 4' | 490 | 0.308 | 0.341 | 20 - 24 - 34 | 35 | 231 | 76.8 | 84.8 | 6.0 - 7.4 - 10.5 | 51 | 54 | 50 | 41 | 38 | 32 | | | |
| | | 650 | 0.542 | 0.599 | 23 - 28 - 40 | 40 | 307 | 135.1 | 149.3 | 7.0 - 8.5 - 12.1 | 53 | 59 | 55 | 46 | 43 | 37 | | | |

NOTES: Throw values are given for terminal velocities of 150, 100, and 50 FPM (0.75, 0.50, and 0.25 m/s). Throw values are given for isothermal conditions. Airflow is given for the length of the unit. NC values are based on octave band 2 - 7 sound power levels minus a room absorption of 10dB, re10⁻¹² Watts. Dash in space denotes a NC or dB value of less than 10. Data was obtained from tests conducted in accordance with ANSI/ASHRAE Standard 70, ISO Standard 5219, and ISO Standard 3741. See selection software for performance data not shown, including octave band data.

© KRUEGER 2012

PTBSS, PTBSSFB Performance Data: Horizontal Throw

IP/METRIC DATA: PTBSS, PTBSSFB, 1 1/2" SLOT WIDTH, 2-SLOT (NO DAMPER)

| | Linear Length | IP Data | | | | | NC | Metric Data | | | | | Octave Band, dB | | | | | | |
|-------------------|---------------|----------|----------------|----------------|--------------|-------------|-----|----------------|----------------|-------------------|-----------------|----|-----------------|----|----|----|----|--|--|
| | | Air Flow | Pressure | | 1-Way Throw | Air Flow | | Pressure | | 1-Way Throw | 2 | 3 | 4 | 5 | 6 | 7 | | | |
| | | | P _s | P _t | | | | P _s | P _t | | | | | | | | m | | |
| | | CFM | "WG | "WG | ft | L/s | | Pa | Pa | m | | | | | | | | | |
| 1 1/2" Slot Width | 2' | 75 | 0.011 | 0.021 | 1 - 3 - 11 | 15 | 35 | 2.7 | 5.2 | 0.4 - 1.0 - 3.2 | 43 | 37 | 29 | 22 | 18 | 14 | | | |
| | | 155 | 0.047 | 0.090 | 6 - 11 - 19 | 28 | 73 | 11.7 | 22.4 | 1.8 - 3.3 - 5.9 | 47 | 49 | 42 | 35 | 32 | 27 | | | |
| | | 195 | 0.074 | 0.142 | 9 - 14 - 22 | 32 | 92 | 18.5 | 35.4 | 2.8 - 4.2 - 6.6 | 49 | 52 | 47 | 39 | 37 | 31 | | | |
| | | 235 | 0.108 | 0.207 | 11 - 16 - 24 | 35 | 111 | 26.9 | 51.5 | 3.3 - 5.0 - 7.2 | 50 | 56 | 50 | 43 | 40 | 34 | | | |
| | | 315 | 0.194 | 0.371 | 15 - 20 - 28 | 41 | 149 | 48.4 | 92.5 | 4.5 - 5.9 - 8.4 | 51 | 60 | 56 | 48 | 46 | 39 | | | |
| | 6" Oval Inlet | 4' | 100 | 0.007 | 0.025 | 1 - 2 - 8 | 14 | 47 | 1.7 | 6.1 | 0.3 - 0.6 - 2.4 | 42 | 36 | 27 | 22 | 19 | 14 | | |
| | | | 200 | 0.027 | 0.098 | 4 - 8 - 20 | 26 | 94 | 6.7 | 24.5 | 1.1 - 2.4 - 6.0 | 46 | 48 | 40 | 34 | 32 | 26 | | |
| | | | 250 | 0.042 | 0.153 | 6 - 12 - 25 | 30 | 118 | 10.4 | 38.2 | 1.7 - 3.8 - 7.5 | 47 | 51 | 45 | 39 | 36 | 30 | | |
| | | | 300 | 0.060 | 0.221 | 8 - 15 - 27 | 34 | 142 | 15.0 | 55.0 | 2.4 - 4.5 - 8.2 | 48 | 54 | 48 | 42 | 40 | 33 | | |
| | | 400 | 0.107 | 0.393 | 13 - 20 - 31 | 39 | 189 | 26.6 | 97.8 | 4.0 - 6.0 - 9.5 | 50 | 59 | 53 | 47 | 45 | 38 | | | |
| | 5' | 120 | 0.007 | 0.033 | 1 - 2 - 8 | 15 | 57 | 1.7 | 8.1 | 0.3 - 0.6 - 2.5 | 42 | 37 | 29 | 24 | 20 | 16 | | | |
| | | 250 | 0.029 | 0.141 | 4 - 9 - 22 | 28 | 118 | 7.3 | 35.1 | 1.2 - 2.7 - 6.7 | 46 | 50 | 42 | 37 | 34 | 28 | | | |
| | | 315 | 0.047 | 0.224 | 6 - 14 - 28 | 32 | 149 | 11.6 | 55.8 | 1.9 - 4.2 - 8.4 | 47 | 54 | 47 | 41 | 39 | 32 | | | |
| | | 380 | 0.068 | 0.326 | 9 - 17 - 30 | 36 | 179 | 16.9 | 81.1 | 2.8 - 5.1 - 9.2 | 48 | 57 | 50 | 44 | 42 | 35 | | | |
| | | 510 | 0.122 | 0.587 | 15 - 23 - 35 | 41 | 241 | 30.4 | 146.1 | 4.6 - 6.9 - 10.7 | 50 | 62 | 56 | 50 | 48 | 40 | | | |
| 8" Oval Inlet | 2' | 90 | 0.014 | 0.020 | 2 - 5 - 13 | 14 | 42 | 3.5 | 4.9 | 0.6 - 1.4 - 3.8 | 44 | 35 | 28 | 20 | 16 | 13 | | | |
| | | 190 | 0.062 | 0.087 | 9 - 13 - 21 | 27 | 90 | 15.5 | 21.7 | 2.7 - 4.1 - 6.5 | 48 | 48 | 42 | 34 | 31 | 25 | | | |
| | | 240 | 0.100 | 0.139 | 11 - 17 - 24 | 31 | 113 | 24.8 | 34.7 | 3.4 - 5.1 - 7.3 | 49 | 52 | 46 | 38 | 35 | 30 | | | |
| | | 290 | 0.145 | 0.203 | 14 - 19 - 26 | 35 | 137 | 36.2 | 50.6 | 4.1 - 5.7 - 8.1 | 50 | 55 | 50 | 41 | 39 | 33 | | | |
| | | 390 | 0.263 | 0.368 | 18 - 22 - 31 | 40 | 184 | 65.4 | 91.5 | 5.4 - 6.6 - 9.3 | 52 | 60 | 55 | 47 | 45 | 38 | | | |
| | 4' | 120 | 0.008 | 0.018 | 1 - 3 - 11 | 13 | 57 | 1.9 | 4.4 | 0.4 - 0.9 - 3.5 | 42 | 35 | 26 | 20 | 17 | 12 | | | |
| | | 260 | 0.036 | 0.083 | 6 - 13 - 25 | 27 | 123 | 9.0 | 20.6 | 1.8 - 3.9 - 7.6 | 47 | 48 | 41 | 34 | 31 | 26 | | | |
| | | 330 | 0.058 | 0.133 | 10 - 16 - 28 | 31 | 156 | 14.5 | 33.2 | 2.9 - 5.0 - 8.6 | 48 | 52 | 45 | 39 | 36 | 30 | | | |
| | | 400 | 0.086 | 0.196 | 13 - 20 - 31 | 34 | 189 | 21.3 | 48.8 | 4.0 - 6.0 - 9.5 | 49 | 55 | 49 | 42 | 40 | 33 | | | |
| | | 540 | 0.156 | 0.357 | 18 - 26 - 36 | 40 | 255 | 38.9 | 89.0 | 5.4 - 7.8 - 11.0 | 51 | 60 | 55 | 47 | 45 | 38 | | | |
| | 5' | 140 | 0.007 | 0.021 | 1 - 3 - 11 | 14 | 66 | 1.9 | 5.2 | 0.4 - 0.8 - 3.4 | 42 | 36 | 27 | 21 | 18 | 13 | | | |
| | | 300 | 0.034 | 0.096 | 6 - 13 - 27 | 27 | 142 | 8.5 | 24.0 | 1.7 - 3.9 - 8.1 | 47 | 48 | 42 | 35 | 32 | 27 | | | |
| | | 380 | 0.055 | 0.154 | 9 - 17 - 30 | 31 | 179 | 13.7 | 38.5 | 2.8 - 5.1 - 9.2 | 48 | 52 | 46 | 39 | 37 | 31 | | | |
| | | 460 | 0.080 | 0.226 | 13 - 20 - 33 | 35 | 217 | 20.0 | 56.4 | 4.1 - 6.2 - 10.1 | 49 | 56 | 50 | 43 | 41 | 34 | | | |
| | | 620 | 0.146 | 0.411 | 18 - 27 - 39 | 40 | 293 | 36.4 | 102.4 | 5.6 - 8.3 - 11.8 | 51 | 60 | 55 | 48 | 46 | 39 | | | |
| 10" Oval Inlet | 2' | 90 | 0.014 | 0.017 | 2 - 5 - 13 | 11 | 42 | 3.6 | 4.3 | 0.6 - 1.4 - 3.8 | 44 | 32 | 25 | 17 | 13 | - | | | |
| | | 210 | 0.078 | 0.094 | 10 - 15 - 23 | 26 | 99 | 19.4 | 23.4 | 3.0 - 4.5 - 6.9 | 48 | 47 | 41 | 32 | 29 | 24 | | | |
| | | 270 | 0.129 | 0.155 | 13 - 18 - 26 | 31 | 127 | 32.0 | 38.6 | 3.8 - 5.5 - 7.8 | 50 | 51 | 45 | 37 | 34 | 28 | | | |
| | | 330 | 0.192 | 0.232 | 15 - 20 - 28 | 34 | 156 | 47.8 | 57.7 | 4.7 - 6.1 - 8.6 | 51 | 54 | 49 | 40 | 38 | 32 | | | |
| | | 450 | 0.357 | 0.431 | 19 - 23 - 33 | 40 | 212 | 89.0 | 107.2 | 5.8 - 7.1 - 10.0 | 53 | 59 | 55 | 46 | 44 | 37 | | | |
| | 4' | 120 | 0.007 | 0.012 | 1 - 3 - 11 | - | 57 | 1.7 | 3.0 | 0.4 - 0.9 - 3.5 | 42 | 32 | 24 | 17 | 13 | - | | | |
| | | 200 | 0.019 | 0.033 | 4 - 8 - 20 | 19 | 94 | 4.7 | 8.3 | 1.1 - 2.4 - 6.0 | 45 | 40 | 33 | 26 | 23 | 18 | | | |
| | | 360 | 0.061 | 0.108 | 11 - 18 - 30 | 30 | 170 | 15.2 | 26.9 | 3.5 - 5.4 - 9.0 | 48 | 50 | 44 | 37 | 34 | 28 | | | |
| | | 440 | 0.091 | 0.161 | 15 - 22 - 33 | 33 | 208 | 22.7 | 40.2 | 4.4 - 6.6 - 9.9 | 49 | 54 | 48 | 40 | 38 | 32 | | | |
| | | 600 | 0.170 | 0.300 | 20 - 27 - 38 | 39 | 283 | 42.2 | 74.7 | 6.0 - 8.2 - 11.6 | 51 | 59 | 54 | 46 | 44 | 37 | | | |
| | 5' | 140 | 0.006 | 0.014 | 1 - 3 - 11 | - | 66 | 1.6 | 3.4 | 0.4 - 0.8 - 3.4 | 42 | 33 | 24 | 18 | 14 | - | | | |
| | | 320 | 0.034 | 0.071 | 6 - 14 - 28 | 26 | 151 | 8.4 | 17.6 | 2.0 - 4.3 - 8.5 | 47 | 47 | 40 | 33 | 30 | 25 | | | |
| | | 410 | 0.055 | 0.116 | 11 - 18 - 31 | 30 | 193 | 13.8 | 28.9 | 3.2 - 5.5 - 9.6 | 48 | 51 | 44 | 37 | 35 | 29 | | | |
| | | 500 | 0.082 | 0.173 | 15 - 22 - 35 | 34 | 236 | 20.5 | 43.0 | 4.5 - 6.7 - 10.6 | 49 | 54 | 48 | 41 | 39 | 32 | | | |
| | | 680 | 0.152 | 0.320 | 20 - 29 - 41 | 39 | 321 | 37.8 | 79.6 | 6.1 - 8.7 - 12.3 | 51 | 59 | 54 | 47 | 45 | 38 | | | |
| 12" Oval Inlet | 4' | 150 | 0.010 | 0.013 | 2 - 4 - 15 | - | 71 | 2.4 | 3.2 | 0.6 - 1.4 - 4.5 | 43 | 31 | 23 | 16 | 12 | - | | | |
| | | 370 | 0.059 | 0.077 | 12 - 18 - 30 | 26 | 175 | 14.6 | 19.2 | 3.7 - 5.6 - 9.1 | 48 | 46 | 40 | 32 | 29 | 24 | | | |
| | | 480 | 0.099 | 0.130 | 16 - 24 - 34 | 30 | 227 | 24.6 | 32.4 | 4.8 - 7.2 - 10.4 | 49 | 51 | 45 | 37 | 34 | 28 | | | |
| | | 590 | 0.150 | 0.196 | 20 - 27 - 38 | 34 | 278 | 37.2 | 48.9 | 5.9 - 8.1 - 11.5 | 50 | 54 | 49 | 40 | 38 | 32 | | | |
| | | 810 | 0.282 | 0.370 | 26 - 31 - 44 | 40 | 382 | 70.2 | 92.2 | 7.8 - 9.5 - 13.5 | 52 | 59 | 55 | 46 | 44 | 37 | | | |
| | 5' | 175 | 0.009 | 0.013 | 2 - 4 - 16 | - | 83 | 2.1 | 3.2 | 0.6 - 1.3 - 4.7 | 43 | 32 | 24 | 17 | 13 | - | | | |
| | | 425 | 0.051 | 0.075 | 11 - 19 - 32 | 26 | 201 | 12.6 | 18.7 | 3.5 - 5.7 - 9.7 | 48 | 47 | 41 | 33 | 30 | 25 | | | |
| | | 550 | 0.085 | 0.126 | 16 - 24 - 36 | 31 | 260 | 21.1 | 31.3 | 4.9 - 7.4 - 11.1 | 49 | 51 | 45 | 37 | 35 | 29 | | | |
| | | 675 | 0.128 | 0.189 | 20 - 29 - 40 | 34 | 319 | 31.8 | 47.1 | 6.1 - 8.7 - 12.3 | 50 | 55 | 49 | 41 | 39 | 33 | | | |
| | | 925 | 0.240 | 0.355 | 27 - 33 - 47 | 40 | 437 | 59.7 | 88.4 | 8.3 - 10.2 - 14.4 | 52 | 60 | 55 | 47 | 45 | 38 | | | |

NOTE: See notes on page F1-60.

PTBSS, PTBSSFB Suggested Specification & Configuration

PTBSS, PTBSSFB

The plenum slot supply diffuser shall be Krueger model PTBSS/PTBSSFB constructed of 24 gage galvanized steel with factory drawn inlet to prevent air leakage. The PTBSS/PTBSSFB shall have 1" or 1 1/2" slot width with 1 or 2 slots. The PTBSS/PTBSSFB shall have 26 gage steel roll formed pattern controllers shipped loose for field installation. The PTBSSFB shall have factory installed extruded aluminum pattern controllers.

Optional plaster frame is available for installation into hard ceilings.

Optional 1/4" thick, 2 lb. density internal insulation is available.

Optional quadrant damper for field attachment to the neck is available.

PERFORMANCE

The manufacturer shall provide published (printed or electronic) performance data for the diffuser. Performance data shall include 2 - 7 octave band sound power levels. The diffuser shall be tested in accordance to the data standards at the time of product introduction or ANSI/ASHRAE Standard 70.

FINISH

The standard finish shall be black on the face and pattern controllers with optional white T-Bars.

1. SERIES: (XXXXXXX)

- PTBSS - Steel Plenum Slot Diffuser
(Pattern Controllers Shipped Loose)
- PTBSSFB - Steel Plenum Slot Diffuser
(Pattern Controllers Factory Installed)

2. INSULATION: (X)

- N - No Insulation
- Y - Insulation

3. SLOT LENGTH: (XX)

- 24", 36", 48", or 60"

4. NUMBER OF SLOTS: (X)

- 1 or 2

5. PLENUM INLET SIZE: (XX)

- 5" Round
- 6", 8", 10", or 12" Oval

6. SLOT WIDTH: (XXX)

- 100 - 1"
- 150 - 1 1/2"

7. DAMPER: (XX)

- 00 - No Damper
- QD - Quadrant Damper

8. FRAME STYLE/T-BAR LOCATION: (XXX)

- 23A - All Tees by Others
- 23B - Center Tee Only
- 23C - Tees on Both Sides
- 23D - Center and Outside Tees

9. MOUNTING TYPE: (XXXX)

- 00 - No Mounting
- PF - Plaster Frame *
- MTT1 - Mounting Tab Opposite Inlet
- MTT2 - Mounting Tabs on Both Sides

10. FINISH: (XX)

- 35 - Black Face and Tees
- 50 - White Exposed Surfaces, Black Pattern Controller, & White Optional Tees
- 55 - Black with Optional White Tees

* Mounting type PF only available with Frame 23A (1 slot only) and Frame 23B.

PLENUM SLOT DIFFUSERS

P
T
B
S
S
-
P
T
B
S
S
F
B

SAMPLE CONFIGURATION: PTBSS - N - 36 - 2 - 10 - 100 - 00 - 23B - PF - 55