



PRISM
This supply diffuser features an arcuate faceplate. Center square appliqué offers nine standard colors to match interior décor.



PLQ & 5PLQ
This supply diffuser features a square plaque faceplate.



PLQR
This supply diffuser features a round plaque faceplate.



PLQLT
This supply diffuser features a square plaque face plate and insulated backpan for low-temperature applications.



PLQIMP
This supply diffuser features a square plaque faceplate with an integrated multi-port ring.



KSD
This architectural supply diffuser features a center swirl.

PRISM

Introduction A1-3
 Dimensional & Appliqué Information A1-4
 Retrofit Installation Information A1-5
 Reference Charts A1-6
 Performance Data A1-9
 Engineering Specification..... A1-11

PLQ, 5PLQ, PLQR, PLQLT, 5PLQLT

PLQ/5PLQ/PLQR Introduction & Dimensional Information..... A1-12
 PLQ/5PLQ/PLQR Frame Styles & Directional Blow Tabs..... A1-13
 PLQLT/5PLQLT Introduction..... A1-14
 PLQLT/5PLQLT Dimensional Information & Frame Styles..... A1-15
 PLQ/5PLQ/PLQLT/5PLQLT Reference Charts A1-16
 PLQ/5PLQ/PLQLT/5PLQLT Performance Data A1-19
 PLQR Reference Charts..... A1-21
 PLQR Performance Data A1-24
 Engineering Specifications..... A1-26

PLQIMP

Introduction A1-28
 Dimensional Information & Frame Styles..... A1-29
 Reference Charts A1-30
 Performance Data A1-32
 Engineering Specifications..... A1-33

KSD

Introduction & Dimensional Data..... A1-34
 Reference Charts A1-35
 Performance Data A1-37
 Engineering Specification..... A1-38

Introduction: Prism

Krueger's Prism diffuser represents a new way of thinking about today's air distribution. Instead of concealing the diffuser, as many have in the past, Krueger has chosen to use it as a tool to compliment the interior design in your office or work environment without sacrificing aesthetics.

The Prism's structure is created from a one-piece, steel stamped face that locks into a one-piece, steel stamped round or square neck backpan. The face is removable for easy access to neck mounted dampers and is offered separately to retrofit most snap-in, perforated series ceiling diffusers. (Contact Krueger for your specific application needs.)

Offering a high induction, 4-way horizontal blow pattern, the Prism delivers excellent room air mixing, which makes it superior for VAV applications. Additionally, the Prism has comparable sound performance to traditional square ceiling diffusers.

In addition to high performance and great aesthetics, the Prism's most exceptional trait is the availability of a wide array of appliqué, which are available in nine standard colors or in any custom color to match your interior décor. Furthermore, you may have your company logo or pattern screened on to the appliqué for a more dramatic effect.

With its striking features and colorful appliqué options, coupled with a variety of frame styles, neck sizes, and paint options, Krueger's Prism will suit your interior decoration needs.

MODEL

PRISM - One-piece Steel Faceplate and
One-piece Steel Backpan

FEATURES

- Nine standard appliqué colors to match interior décor.
- Faceplate retrofits with most existing snap-in, perforated diffusers without removal of backpan or duct work.

PANEL SIZE

- 24"x24"

OPTIONS

- Custom appliqué color matching available using any standard color scheme, such as Pantone®* or Trumatch®**.
- Appliqué available with screened logo or pattern.
- Prism available without appliqué.
- Appliqué sold separately.
- Prism faceplate is sold separately for retrofit applications.

FINISHES

- Standard finish is #44 British White.
- Optional finishes available.

* Pantone®, Pantone Matching System, and Pantone Professional Color System are trademarks of Pantone, Inc. **Trumatch® is a registered trademark of Trumatch, Inc.



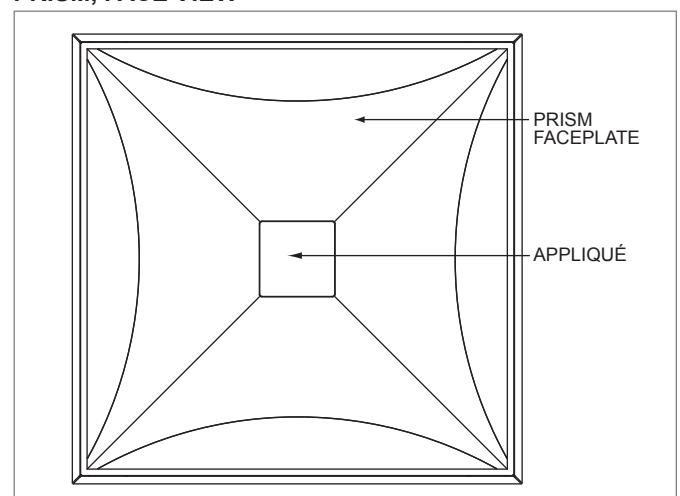
Prism with white center appliqué.



Prism with light grey appliqué.

Prism Product Description

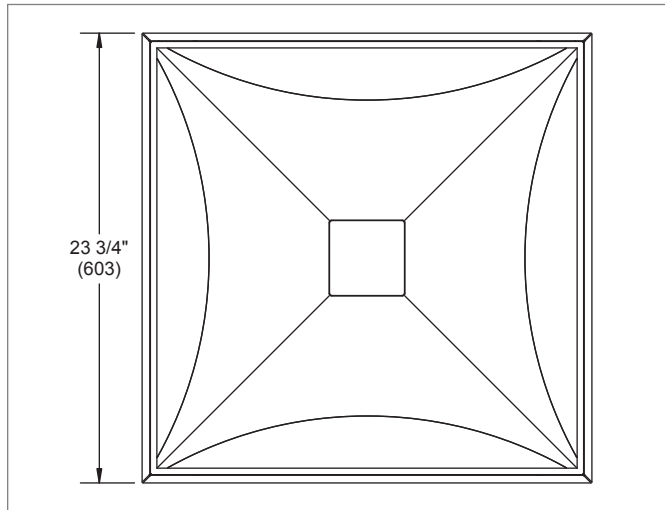
PRISM, FACE VIEW



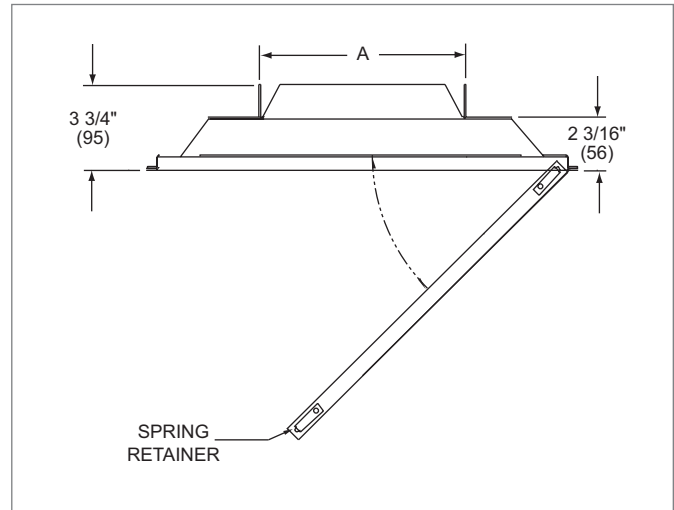
NOTE: Nine standard appliqué colors available: British White, Off White, Light Gray, Medium Gray, Light Beige, Medium Beige, Blue-Gray, Olive, and Rust.

Prism Dimensional Information

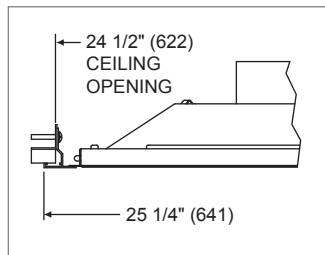
PRISM, FACE VIEW



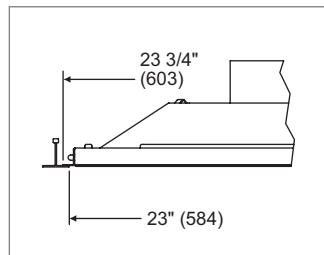
PRISM, CROSS SECTION, SQUARE NECK



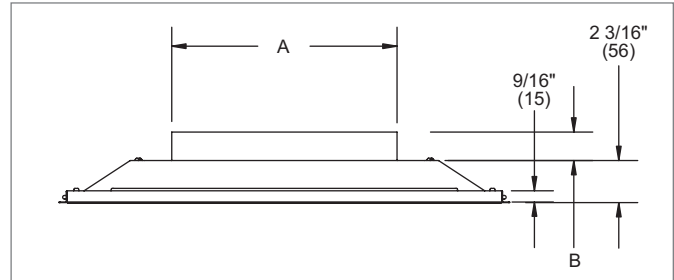
PRISM, FRAME 22 SURFACE MOUNT



PRISM, FRAME 23 LAY-IN T-BAR



PRISM, CROSS SECTION, ROUND NECK



PRISM, AVAILABLE ROUND NECK SIZES

Neck Size	A	B
6" (152)	5 7/8" (149)	1" (25)
8" (203)	7 7/8" (200)	1" (25)
10" (254)	9 7/8" (251)	1 1/2" (38)
12" (305)	11 7/8" (302)	1 1/2" (38)
14" (356)	13 7/8" (352)	1 1/2" (38)
16" (406)	15 7/8" (404)	1 1/2" (38)

PRISM, AVAILABLE SQUARE NECK SIZES

Neck Size	A
6" x 6" (152 x 152)	5 7/8" (149)
8" x 8" (203 x 203)	7 7/8" (200)
10" x 10" (254 x 254)	9 7/8" (251)
12" x 12" (305 x 305)	11 7/8" (302)
14" x 14" (356 x 356)	13 7/8" (352)

NOTE: Dimensions in parentheses are mm.

Prism Appliqué Information

The intended use for the appliqué is on the Krueger Prism ceiling diffuser. The appliqué consists of a matte substrate with an adhesive backing and are individually die cut for precision and consistency. It is fitted to a pre-formed square embossment in the center of the faceplate with the purpose of providing color and soft texture. The appliqué is applied after the diffuser is painted.

Krueger offers nine standard colors to choose from, or you can pick your own color from any major color guide. Also, you have the option of having your logo screened onto the appliqué for an even more professional effect.

Stand-alone replacement appliqué, standard or custom, are available separately to modify existing Prism applications, should the interior décor change.

CUSTOM APPLIQUÉS

- Custom color matching requires that two 2"x2" paint or color chip samples are supplied to Krueger.
- Custom logo screening requires that a high resolution, digital image is supplied to Krueger (3.96"x3.96" viewing size).

ARCHITECTURAL & PLAQUE DIFFUSERS

P
R
I
S
M

© KRUEGER 2012

Prism Appliqué Information & Specifications

Whether you choose one of our nine standard colors, or one of your own, you can count on premium quality and consistency of color with every appliqué. The process in which color is applied allows us to match any given color to $\pm .5\Delta E$, where a difference of $1.0\Delta E$ is the limit to which the average person is able to discern two colors as different. So brighten up your décor with the Prism today!

APPLIQUÉ SPECIFICATIONS

- 0.017" Polycarbonate substrate with opacity film.
- 0.002" Adhesive with peel-off backing.
- 0.019" Total thickness.

NOTES: See appliqué color guide in the back of the catalog. Contact your local Krueger representative to obtain sample appliqué swatches.

Prism Retrofit Information

PERFORATED DIFFUSER



Shown is a typical perforated supply ceiling diffuser. Before beginning the retrofit process, verify that the existing diffuser backpan has the necessary slotted hole to receive the Prism diffuser face spring clip (see corner detail).

REMOVAL OF CORE & PERFORATED FACE



STEP 1: Disengage the perforated diffuser face to access the backpan. Remove the stamped or curved blade core from the backpan, then remove the perforated face.

REPLACEMENT WITH PRISM FACE



STEP 2: Clip the Prism diffuser face into the exiting backpan.

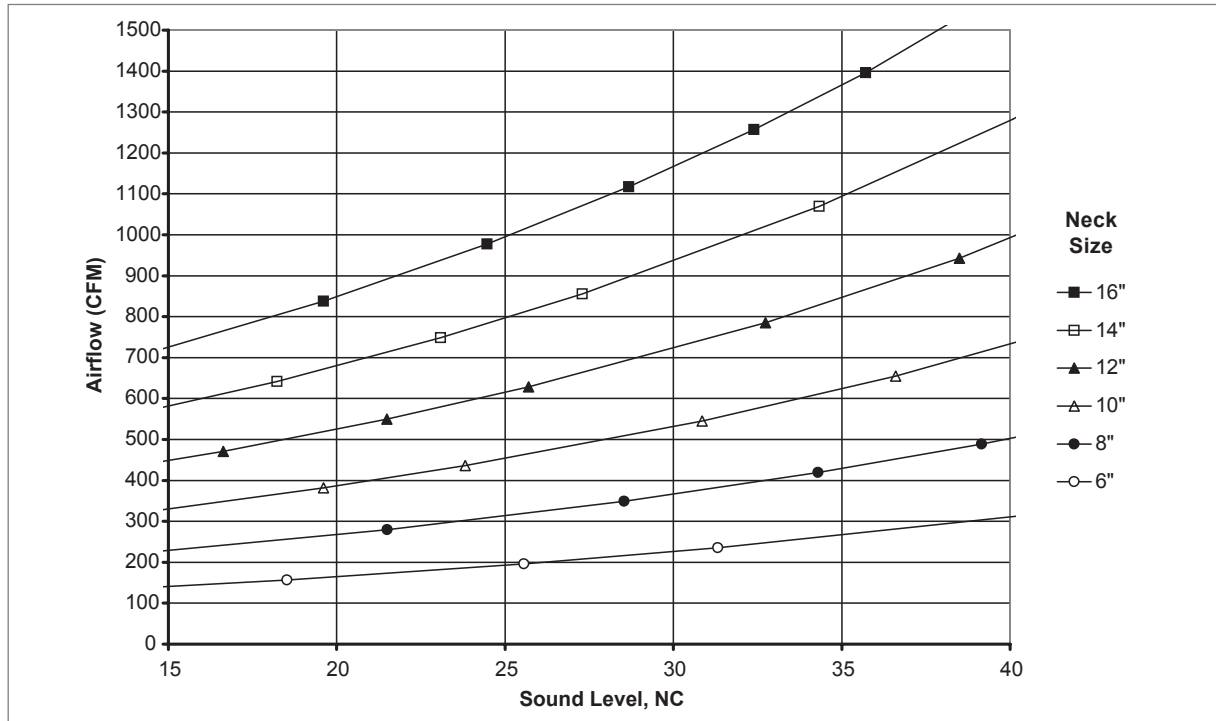
PRISM DIFFUSER



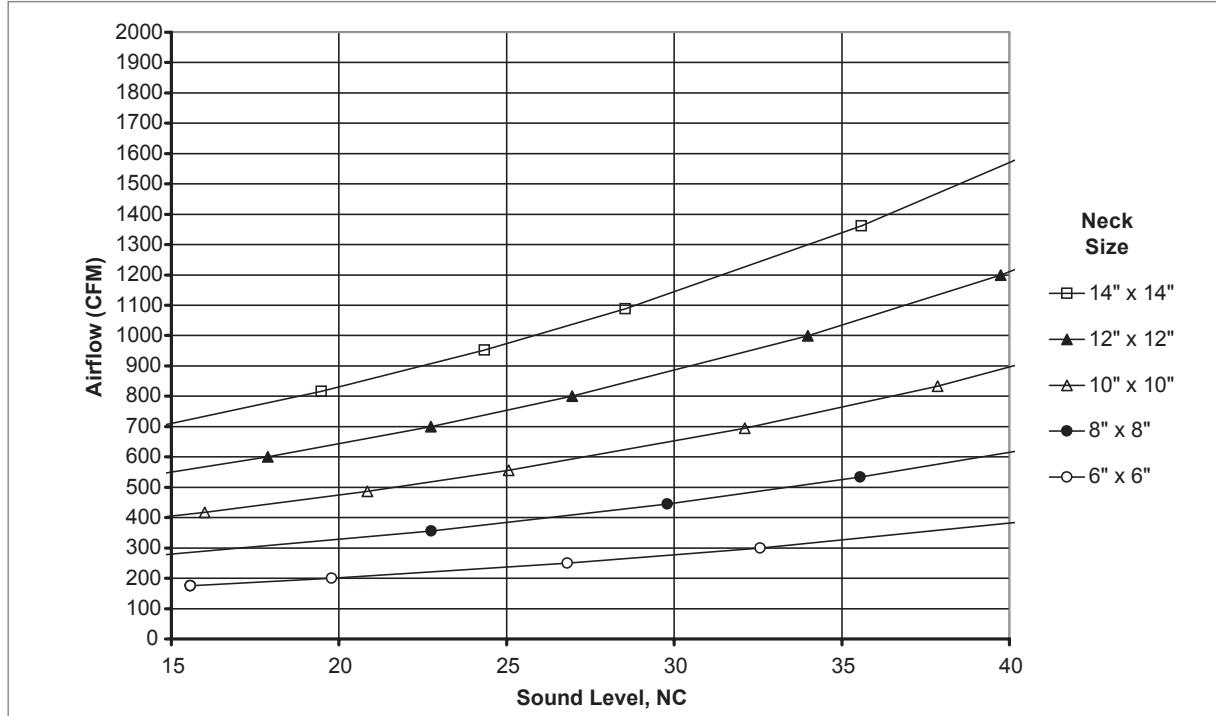
Shown is a completed retrofit without disconnecting duct work/flex duct or removing the existing backpan.

Prism Reference Charts

AIRFLOW VS. NC LEVEL: PRISM, 24"x24" PANEL, ROUND NECK (NO DAMPER)



AIRFLOW VS. NC LEVEL: PRISM, 24"x24" PANEL, SQUARE NECK (NO DAMPER)

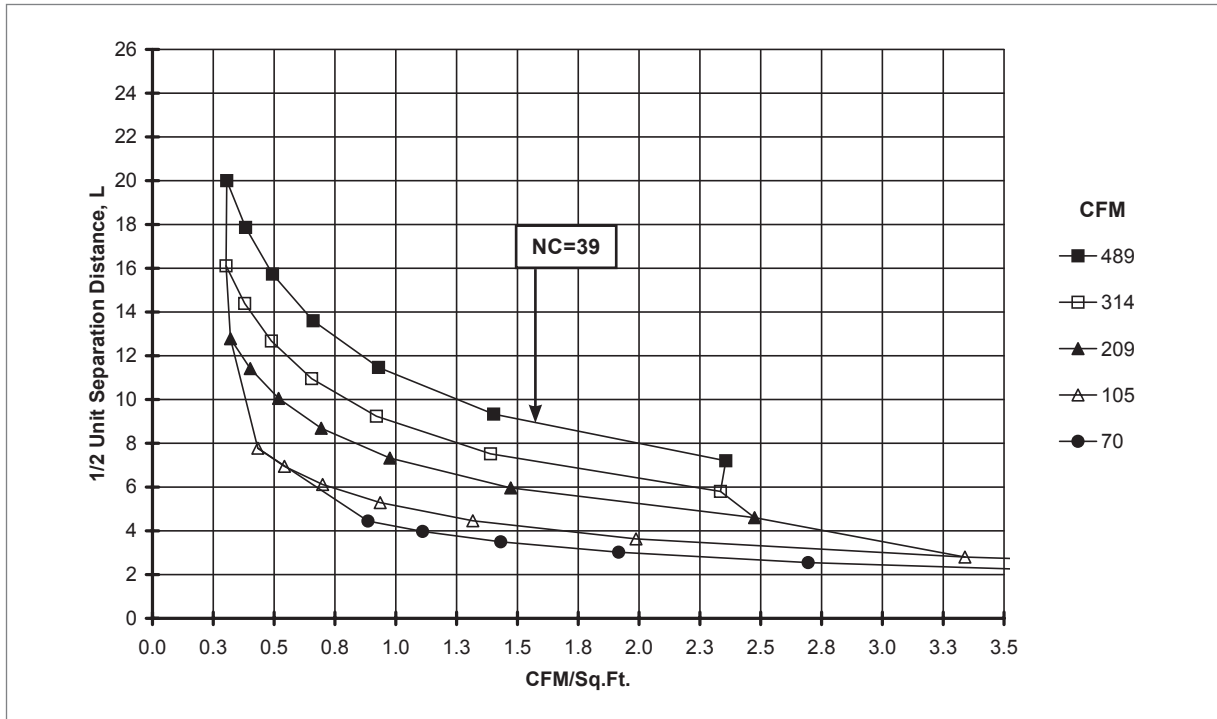


ARCHITECTURAL & PLAQUE DIFFUSERS

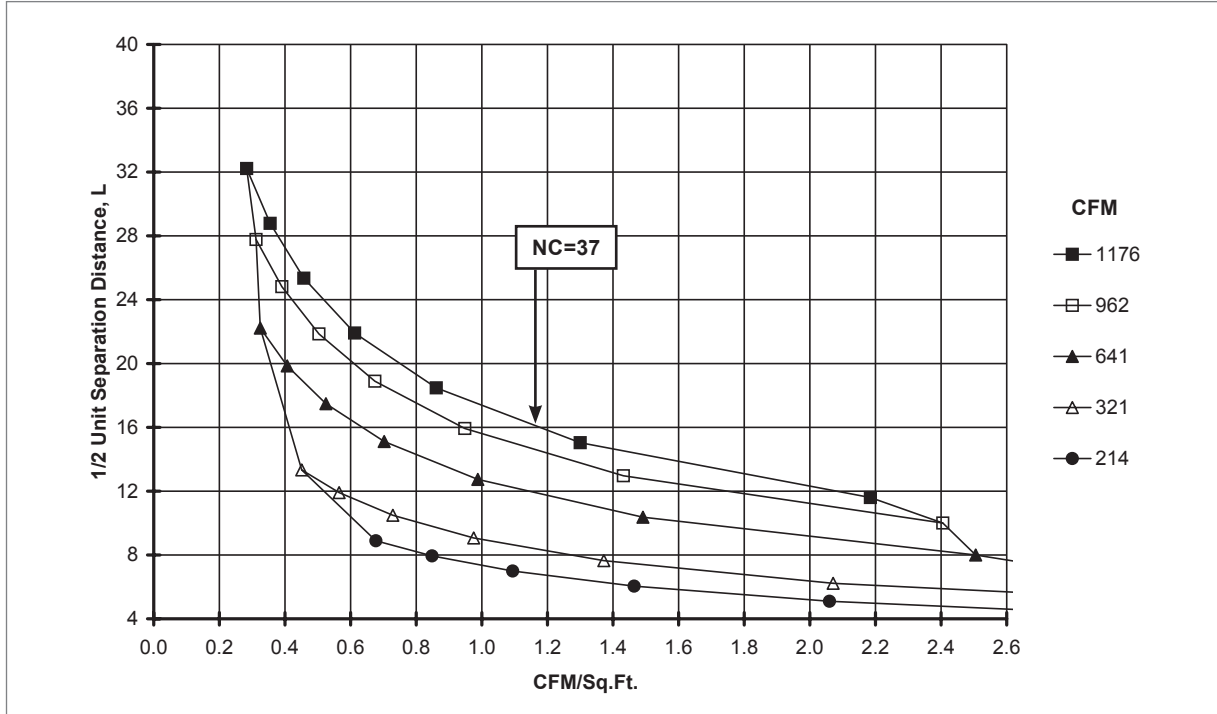
P
R
I
S
M

Prism Reference Charts: Horizontal Throw

DIFFUSER SPACING FOR 80% ADPI: PRISM, 24"x24" PANEL, 8" NECK, 4-WAY (NO DAMPER)



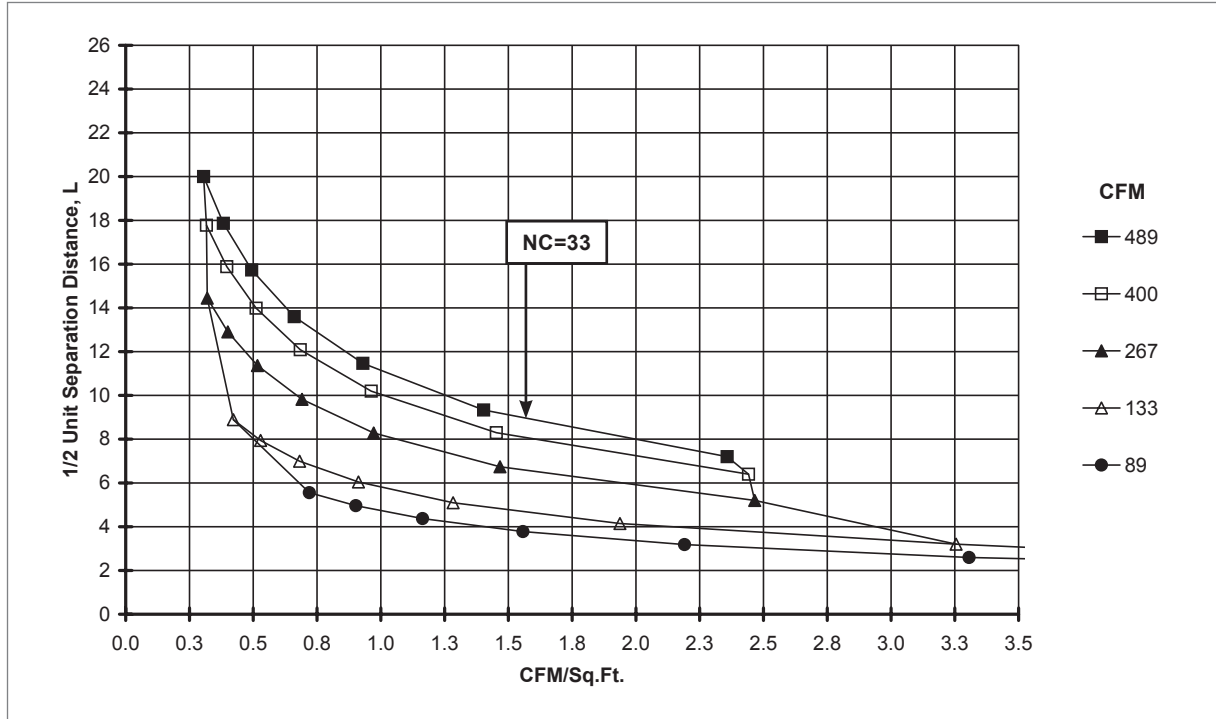
DIFFUSER SPACING FOR 80% ADPI: PRISM, 24"x24" PANEL, 14" NECK, 4-WAY (NO DAMPER)



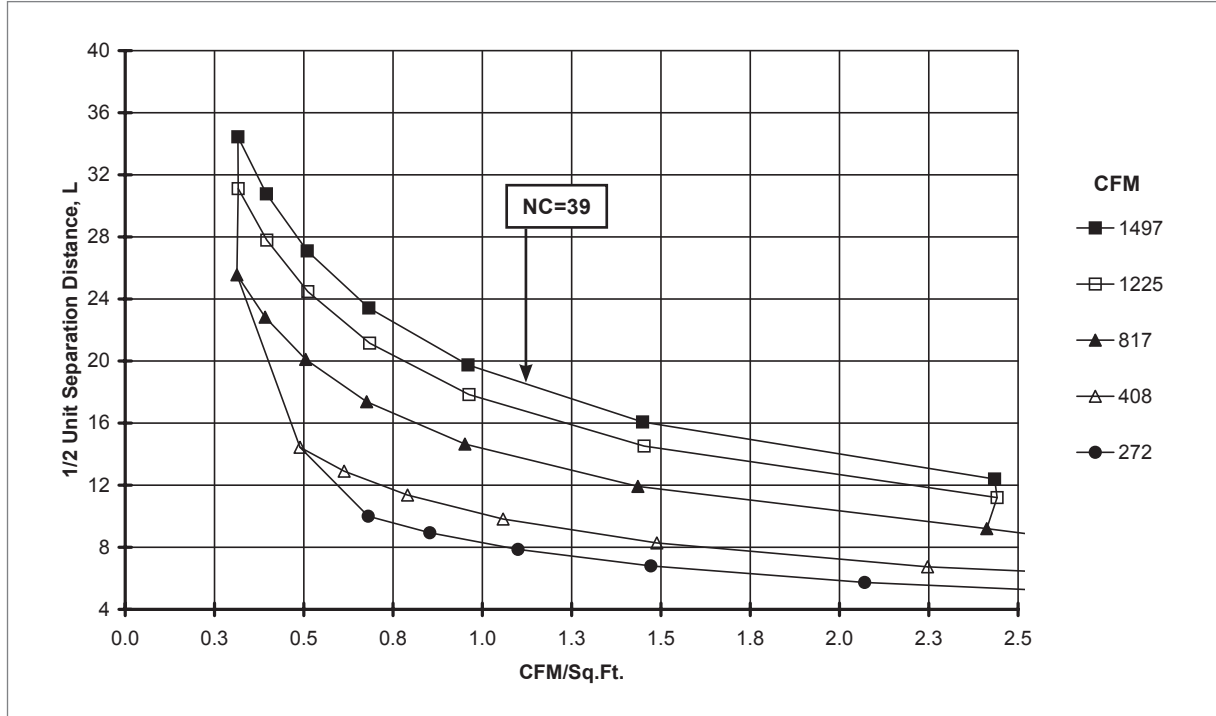
NOTES: Charts are at 20 BTUH/ft² loads. See the Engineering section of this catalog for instructions on how to read these charts and additional ADPI information.

Prism Reference Charts: Horizontal Throw

DIFFUSER SPACING FOR 80% ADPI: PRISM, 24"x24" PANEL, 8"x8" NECK, 4-WAY (NO DAMPER)



DIFFUSER SPACING FOR 80% ADPI: PRISM, 24"x24" PANEL, 14"x14" NECK, 4-WAY (NO DAMPER)



NOTES: Charts are at 20 BTUH/ft² loads. See the Engineering section of this catalog for instructions on how to read these charts and additional ADPI information.

ARCHITECTURAL & PLAQUE DIFFUSERS

P
R
I
S
M

Prism Performance Data: Horizontal Throw
IP/METRIC DATA: PRISM, 24"x24" PANEL, ROUND NECK (NO DAMPER)

	IP Data					NC	Metric Data					Octave Band, dB						
	Neck Vel	Air Flow	Pt	Ps	Throw		Neck Vel	Air Flow	Pt	Ps	Throw	2	3	4	5	6	7	
	FPM	CFM	"WG	"WG	ft		m/s	L/s	Pa	Pa	m							
6" Dia.	200	39	.004	0.002	0 - 1 - 3	-	1.02	19	1.1	0.5	0.1 - 0.3 - 1.0	17	-	-	-	-	-	
	300	59	.010	0.004	1 - 2 - 5	-	1.52	28	2.4	1.0	0.3 - 0.6 - 1.5	24	14	11	-	-	-	
	500	98	.027	0.011	3 - 4 - 8	-	2.54	46	6.7	2.9	0.8 - 1.3 - 2.4	33	25	23	18	-	-	
	600	118	.039	0.017	3 - 5 - 9	-	3.05	56	9.7	4.1	1.0 - 1.5 - 2.6	36	29	28	23	11	-	
	700	137	.053	0.022	4 - 6 - 9	14	3.56	65	13.2	5.6	1.2 - 1.8 - 2.9	39	32	31	27	16	-	
	800	157	.069	0.029	4 - 7 - 10	19	4.06	74	17.2	7.3	1.4 - 2.0 - 3.1	41	35	35	31	21	-	
	900	177	.088	0.037	5 - 8 - 11	22	4.57	83	21.8	9.2	1.5 - 2.3 - 3.2	43	38	37	34	25	14	
	1000	196	.108	0.046	6 - 8 - 11	26	5.08	93	26.9	11.4	1.7 - 2.4 - 3.4	45	40	40	37	29	18	
1100	216	.131	0.055	6 - 8 - 12	29	5.59	102	32.6	13.8	1.9 - 2.5 - 3.6	46	42	42	40	33	22		
8" Dia.	200	70	.007	0.004	1 - 1 - 4	-	1.02	33	1.7	1.1	0.2 - 0.4 - 1.4	18	-	-	-	-	-	
	300	105	.016	0.010	1 - 3 - 7	-	1.52	49	3.9	2.5	0.4 - 0.8 - 2.0	25	17	13	-	-	-	
	500	175	.043	0.028	3 - 6 - 11	-	2.54	82	10.8	6.9	1.0 - 1.7 - 3.2	34	28	25	20	-	-	
	600	209	.062	0.040	4 - 7 - 12	12	3.05	99	15.5	9.9	1.4 - 2.0 - 3.5	38	32	30	25	15	-	
	700	244	.085	0.054	5 - 8 - 13	17	3.56	115	21.1	13.5	1.6 - 2.4 - 3.8	40	35	33	30	21	-	
	800	279	.111	0.071	6 - 9 - 13	22	4.06	132	27.5	17.6	1.8 - 2.7 - 4.1	43	38	37	33	25	14	
	900	314	.140	0.089	7 - 10 - 14	25	4.57	148	34.8	22.3	2.0 - 3.1 - 4.3	45	40	39	37	30	19	
	1000	349	.173	0.110	7 - 11 - 15	29	5.08	165	43.0	27.5	2.3 - 3.2 - 4.6	46	43	42	39	33	23	
1100	384	.209	0.134	8 - 11 - 16	32	5.59	181	52.0	33.3	2.5 - 3.4 - 4.8	48	45	44	42	37	26		
10" Dia.	200	109	.010	0.008	1 - 2 - 6	-	1.02	51	2.5	1.9	0.2 - 0.5 - 1.7	20	-	-	-	-	-	
	300	164	.023	0.017	2 - 3 - 8	-	1.52	77	5.7	4.3	0.5 - 1.0 - 2.5	27	19	15	-	-	-	
	500	273	.064	0.048	4 - 7 - 13	-	2.54	129	15.9	12.0	1.3 - 2.1 - 4.0	36	30	27	22	12	-	
	600	327	.092	0.070	6 - 8 - 14	15	3.05	154	22.9	17.3	1.7 - 2.5 - 4.4	39	34	31	27	18	-	
	700	382	.125	0.095	7 - 10 - 16	20	3.56	180	31.2	23.6	2.0 - 3.0 - 4.8	41	37	35	31	24	13	
	800	436	.164	0.124	7 - 11 - 17	24	4.06	206	40.8	30.8	2.3 - 3.4 - 5.1	44	40	38	35	29	18	
	900	491	.207	0.157	8 - 13 - 18	28	4.57	232	51.6	39.0	2.5 - 3.8 - 5.4	46	43	41	38	33	22	
	1000	545	.256	0.193	9 - 13 - 19	31	5.08	257	63.7	48.2	2.8 - 4.0 - 5.7	48	45	44	41	37	26	
1100	600	.309	0.234	10 - 14 - 20	34	5.59	283	77.0	58.3	3.1 - 4.2 - 6.0	49	47	46	44	40	30		
12" Dia.	200	157	.014	0.012	1 - 2 - 7	-	1.02	74	3.6	2.9	0.2 - 0.5 - 2.0	21	12	-	-	-	-	
	300	236	.032	0.027	2 - 4 - 10	-	1.52	111	8.0	6.6	0.5 - 1.2 - 3.1	28	20	16	-	-	-	
	500	393	.089	0.074	5 - 8 - 16	11	2.54	185	22.2	18.4	1.5 - 2.5 - 4.8	37	31	28	23	15	-	
	600	471	.129	0.106	7 - 10 - 17	17	3.05	222	32.0	26.4	2.0 - 3.1 - 5.3	40	35	33	28	21	-	
	700	550	.175	0.144	8 - 12 - 19	21	3.56	259	43.6	36.0	2.4 - 3.6 - 5.7	43	39	36	33	27	16	
	800	628	.229	0.189	9 - 13 - 20	26	4.06	297	56.9	47.0	2.7 - 4.1 - 6.1	45	42	40	36	31	21	
	900	707	.289	0.239	10 - 15 - 21	29	4.57	334	72.0	59.5	3.1 - 4.6 - 6.5	47	44	42	40	36	25	
	1000	785	.357	0.295	11 - 16 - 22	33	5.08	371	88.9	73.4	3.4 - 4.8 - 6.8	49	46	45	43	39	29	
1100	864	.432	0.357	12 - 17 - 24	36	5.59	408	107.6	88.8	3.7 - 5.1 - 7.2	50	48	47	45	43	32		
14" Dia.	200	214	.019	0.017	1 - 2 - 8	-	1.02	101	4.8	4.1	0.3 - 0.6 - 2.4	21	13	-	-	-	-	
	300	321	.043	0.037	2 - 5 - 12	-	1.52	151	10.7	9.3	0.6 - 1.4 - 3.6	29	22	17	-	-	-	
	500	535	.119	0.104	6 - 10 - 19	12	2.54	252	29.7	25.8	1.8 - 3.0 - 5.6	37	33	29	25	17	-	
	600	641	.172	0.149	8 - 12 - 20	18	3.05	303	42.8	37.2	2.4 - 3.6 - 6.2	41	37	34	30	23	13	
	700	748	.234	0.203	9 - 14 - 22	23	3.56	353	58.2	50.6	2.8 - 4.2 - 6.7	43	40	37	34	29	18	
	800	855	.305	0.265	10 - 16 - 23	27	4.06	404	76.0	66.1	3.2 - 4.8 - 7.1	46	43	41	38	34	23	
	900	962	.386	0.336	12 - 18 - 25	31	4.57	454	96.2	83.6	3.6 - 5.3 - 7.6	48	46	43	41	38	28	
	1000	1069	.477	0.415	13 - 19 - 26	34	5.08	505	118.8	103.3	4.0 - 5.6 - 8.0	50	48	46	44	42	31	
1100	1176	.577	0.502	14 - 19 - 27	37	5.59	555	143.7	124.9	4.4 - 5.9 - 8.4	51	50	48	47	45	35		
16" Dia.	200	279	.025	0.022	1 - 2 - 9	-	1.02	132	6.1	5.5	0.3 - 0.7 - 2.7	22	14	-	-	-	-	
	300	419	.055	0.050	2 - 5 - 13	-	1.52	198	13.8	12.4	0.7 - 1.6 - 4.1	29	23	18	11	-	-	
	500	698	.154	0.138	7 - 11 - 21	14	2.54	329	38.3	34.4	2.0 - 3.4 - 6.4	38	34	30	26	19	-	
	600	838	.222	0.199	9 - 13 - 23	20	3.05	395	55.2	49.6	2.7 - 4.1 - 7.1	41	38	35	31	25	15	
	700	977	.302	0.271	10 - 16 - 25	24	3.56	461	75.1	67.5	3.2 - 4.8 - 7.6	44	41	38	35	31	21	
	800	1117	.394	0.354	12 - 18 - 27	29	4.06	527	98.1	88.1	3.6 - 5.4 - 8.1	46	44	42	39	36	25	
	900	1257	.498	0.448	13 - 20 - 28	32	4.57	593	124.1	111.5	4.1 - 6.1 - 8.6	49	47	44	42	40	30	
	1000	1396	.615	0.553	15 - 21 - 30	36	5.08	659	153.2	137.7	4.5 - 6.4 - 9.1	50	49	47	45	44	33	
1100	1536	.745	0.669	16 - 22 - 31	39	5.59	725	185.4	166.6	5.0 - 6.8 - 9.5	52	51	49	48	47	37		

NOTES: Throw values are given for isothermal conditions and terminal velocities of 150, 100, and 50 FPM (0.75, 0.50, and 0.25 m/s). NC values are based on octave band 2 - 7 sound power levels minus a room absorption of 10dB, re 10⁻¹² Watts. Dash in space denotes a NC or dB value of less than 10. Nominal duct is duct width. Data was obtained from tests conducted in accordance with ANSI/ASHRAE Standard 70, ISO Standard 5219, and ISO Standard 3741. See Krueger's selection software for performance data not shown, including octave band data.

Prism | Architectural, Arcuate Plaque Face

Prism Performance Data: Horizontal Throw

IP/METRIC DATA: PRISM, 24"x24" PANEL, SQUARE NECK (NO DAMPER)

	IP Data					NC	Metric Data					Octave Band, dB						
	Neck Vel	Air Flow	Pt	Ps	Throw		Neck Vel	Air Flow	Pt	Ps	Throw	2	3	4	5	6	7	
	FPM	CFM	"WG	"WG	ft		m/s	L/s	Pa	Pa	m							
6" x 6"	200	50	.005	0.003	0 - 1 - 4	-	1.02	24	1.3	0.7	0.1 - 0.3 - 1.1	17	-	-	-	-	-	
	300	75	.012	0.006	1 - 2 - 6	-	1.52	35	2.9	1.5	0.3 - 0.7 - 1.7	24	15	12	-	-	-	
	500	125	.033	0.017	3 - 5 - 9	-	2.54	59	8.1	4.3	0.9 - 1.4 - 2.7	33	26	24	19	-	-	
	600	150	.047	0.025	4 - 6 - 10	11	3.05	71	11.7	6.1	1.1 - 1.7 - 3.0	37	30	29	24	13	-	
	700	175	.064	0.034	4 - 7 - 11	16	3.56	83	16.0	8.4	1.3 - 2.0 - 3.2	39	34	32	28	18	-	
	800	200	.084	0.044	5 - 8 - 11	20	4.06	94	20.9	10.9	1.5 - 2.3 - 3.4	42	36	35	32	23	12	
	900	225	.106	0.056	6 - 9 - 12	23	4.57	106	26.4	13.8	1.7 - 2.6 - 3.7	44	39	38	35	27	16	
	1000	250	.131	0.069	6 - 9 - 13	27	5.08	118	32.6	17.1	1.9 - 2.7 - 3.9	45	41	41	38	31	20	
1100	275	.158	0.083	7 - 9 - 13	30	5.59	130	39.4	20.6	2.1 - 2.9 - 4.0	47	43	43	41	34	23		
8" x 8"	200	89	.009	0.006	1 - 1 - 5	-	1.02	42	2.1	1.5	0.2 - 0.4 - 1.5	19	-	-	-	-	-	
	300	133	.019	0.014	1 - 3 - 8	-	1.52	63	4.8	3.4	0.4 - 0.9 - 2.3	26	18	14	-	-	-	
	500	222	.053	0.038	4 - 6 - 12	-	2.54	105	13.3	9.4	1.1 - 1.9 - 3.6	35	29	26	21	-	-	
	600	267	.077	0.054	5 - 8 - 13	14	3.05	126	19.1	13.5	1.5 - 2.3 - 4.0	38	33	31	26	17	-	
	700	311	.104	0.074	6 - 9 - 14	19	3.56	147	26.0	18.4	1.8 - 2.7 - 4.3	41	36	34	30	22	12	
	800	356	.136	0.096	7 - 10 - 15	23	4.06	168	34.0	24.0	2.0 - 3.1 - 4.6	43	39	37	34	27	16	
	900	400	.173	0.122	8 - 11 - 16	26	4.57	189	43.0	30.4	2.3 - 3.4 - 4.9	45	42	40	38	31	21	
	1000	444	.213	0.151	8 - 12 - 17	30	5.08	210	53.1	37.5	2.6 - 3.6 - 5.1	47	44	43	40	35	24	
1100	489	.258	0.182	9 - 13 - 18	33	5.59	231	64.2	45.4	2.8 - 3.8 - 5.4	49	46	45	43	39	28		
10" x 10"	200	139	.013	0.010	1 - 2 - 6	-	1.02	66	3.2	2.6	0.2 - 0.5 - 1.9	20	11	-	-	-	-	
	300	208	.029	0.023	2 - 4 - 9	-	1.52	98	7.1	5.7	0.5 - 1.2 - 2.9	27	20	15	-	-	-	
	500	347	.080	0.064	5 - 8 - 15	-	2.54	164	19.8	16.0	1.4 - 2.4 - 4.5	36	31	28	23	14	-	
	600	417	.115	0.092	6 - 9 - 16	16	3.05	197	28.6	23.0	1.9 - 2.9 - 5.0	39	35	32	28	20	-	
	700	486	.156	0.126	7 - 11 - 18	21	3.56	229	38.9	31.3	2.2 - 3.4 - 5.4	42	38	36	32	26	15	
	800	556	.204	0.164	8 - 13 - 19	25	4.06	262	50.8	40.9	2.6 - 3.8 - 5.7	44	41	39	36	31	20	
	900	625	.258	0.208	9 - 14 - 20	29	4.57	295	64.3	51.7	2.9 - 4.3 - 6.1	47	44	42	39	35	24	
	1000	694	.319	0.256	10 - 15 - 21	32	5.08	328	79.4	63.8	3.2 - 4.5 - 6.4	48	46	44	42	39	28	
1100	764	.386	0.310	12 - 16 - 22	35	5.59	361	96.0	77.2	3.5 - 4.8 - 6.7	50	48	47	45	42	31		
12" x 12"	200	200	.018	0.015	1 - 2 - 8	-	1.02	94	4.5	3.8	0.3 - 0.6 - 2.3	21	13	-	-	-	-	
	300	300	.040	0.035	2 - 5 - 11	-	1.52	142	10.0	8.6	0.6 - 1.4 - 3.4	28	22	17	-	-	-	
	500	500	.112	0.096	6 - 9 - 18	12	2.54	236	27.9	24.0	1.7 - 2.9 - 5.4	37	33	29	24	16	-	
	600	600	.161	0.139	8 - 11 - 20	18	3.05	283	40.1	34.6	2.3 - 3.4 - 6.0	40	36	33	29	23	12	
	700	700	.219	0.189	9 - 13 - 21	23	3.56	330	54.6	47.0	2.7 - 4.0 - 6.4	43	40	37	34	28	18	
	800	800	.287	0.247	10 - 15 - 23	27	4.06	378	71.4	61.4	3.1 - 4.6 - 6.9	46	43	40	37	33	23	
	900	900	.363	0.312	11 - 17 - 24	31	4.57	425	90.3	77.8	3.4 - 5.2 - 7.3	48	45	43	41	37	27	
	1000	1000	.448	0.386	13 - 18 - 25	34	5.08	472	111.5	96.0	3.8 - 5.4 - 7.7	49	48	46	44	41	31	
1100	1100	.542	0.466	14 - 19 - 27	37	5.59	519	134.9	116.2	4.2 - 5.7 - 8.1	51	50	48	46	45	34		
14" x 14"	200	272	.024	0.022	1 - 2 - 9	-	1.02	128	6.0	5.4	0.3 - 0.7 - 2.7	22	14	-	-	-	-	
	300	408	.054	0.048	2 - 5 - 13	-	1.52	193	13.5	12.1	0.7 - 1.6 - 4.0	29	23	18	11	-	-	
	500	681	.150	0.135	7 - 11 - 21	14	2.54	321	37.4	33.5	2.0 - 3.4 - 6.4	38	34	30	25	19	-	
	600	817	.216	0.194	9 - 13 - 23	19	3.05	385	53.8	48.2	2.7 - 4.0 - 7.0	41	38	35	31	25	15	
	700	953	.294	0.264	10 - 15 - 25	24	3.56	450	73.3	65.7	3.1 - 4.7 - 7.5	44	41	38	35	31	20	
	800	1089	.384	0.344	12 - 18 - 26	29	4.06	514	95.7	85.8	3.6 - 5.4 - 8.0	46	44	41	39	36	25	
	900	1225	.486	0.436	13 - 20 - 28	32	4.57	578	121.1	108.5	4.0 - 6.0 - 8.5	48	47	44	42	40	29	
	1000	1361	.601	0.538	15 - 21 - 30	36	5.08	642	149.5	134.0	4.5 - 6.4 - 9.0	50	49	47	45	43	33	
1100	1497	.727	0.651	16 - 22 - 31	39	5.59	707	180.9	162.1	4.9 - 6.7 - 9.4	52	51	49	48	47	37		

NOTES: Throw values are given for isothermal conditions and terminal velocities of 150, 100, and 50 FPM (0.75, 0.50, and 0.25 m/s). NC values are based on octave band 2 - 7 sound power levels minus a room absorption of 10dB, re 10⁻¹² Watts. Dash in space denotes a NC or dB value of less than 10. Nominal duct is duct width. Data was obtained from tests conducted in accordance with ANSI/ASHRAE Standard 70, ISO Standard 5219, and ISO Standard 3741. See Krueger's selection software for performance data not shown, including octave band data.

ARCHITECTURAL & PLAQUE DIFFUSERS

P R I S M

© KRUEGER 2012

Prism Suggested Specification & Configuration

1. **SERIES: (XXXXX)**
PRISM - Architectural Square Panel Diffuser
2. **PATTERN: (XX)**
RD - Round Neck
SQ - Square Neck
3. **NECK TYPE PATTERN: (XX)**
06" - 16" in 2" increments - Round Neck
06" - 14" in 2" increments - Square Neck
4. **FRAME: (XXX)**
F22 - Surface Mount *
F23 - Lay-in T-Bar
5. **PANEL: (XX)x(XX)**
24"x24"
6. **ACCESSORY APPLIQUÉ: (XX)**
NA - No Appliqué
00 - #44, British White
01 - #49, Off White
02 - Light Grey
03 - Medium Grey
04 - Light Beige
05 - Medium Beige
06 - Blue/Grey
07 - Olive
08 - Rust
92 - 2 Color Custom Logo
93 - 3 Color Custom Logo
94 - 4 Color Custom Logo
99 - 1 Color Custom Logo / Single Color Match
7. **FINISH: (XX)**
01 - Mill
03 - White Face, Black Backpan
10 - Alumican
35 - Black
44 - British White
49 - Off White

* Frame 22 (F22) option includes separate plaster frame shipped loose for field installation.

PRISM

The architectural, square panel ceiling diffusers of the sizes and mounting types shown on the plans or outlet schedule shall be the model Prism by Krueger and constructed of heavy gage steel. The Prism shall have an arcuate (bow shaped or resembling an arch) faceplate with a square color customizable appliqué. The arcuate faceplate shall be precision die-stamped in one piece and removable for access to the optional damper. The faceplate shall have four arcuate openings, each in one of four quadrants. The arcuate opening shall have an integral transition that is tangent to the backpan and permits the air to leave the backpan in a single continuous flow. Diffusers must discharge in the horizontal plane of the room. The diffuser backpan shall be one piece stamped construction of heavy gage steel and have an integrally drawn round or square neck.

Optional duct or neck mounted round damper or square neck OBD shall be constructed of heavy gage steel. Damper shall be operable from the face of the diffuser.

APPLIQUÉ

The appliqué shall be constructed of .017" polycarbonate which includes an opacity film to prevent light transmission. The appliqué shall use a .002" thick acrylic adhesive to attach to the Prism.

PERFORMANCE

The manufacturer shall provide published (printed or electronic) performance data for the diffuser. Performance data shall include 2 - 7 octave band sound power levels. The diffuser shall be tested in accordance to the data standards at the time of product introduction or ANSI/ASHRAE Standard 70.

FINISH

The paint finish shall be #44 British White and be an anodic acrylic paint, baked at 315°F for 30 minutes. The paint thickness shall be 0.8 - 1.0 mils, gloss at 60° per ASTM D523-89 of 50 - 85%, pencil hardness per ASTM D3363-92A of HB - H, crosshatch adhesion per ASTM D3359-83 of 4B - 5B, impact per ASTM D2794-93 of direct impact >100 in/lb and reverse impact >80 in/lb, salt spray per ASTM B117-9048 of 96 hours, humidity per ASTM D2247-92 of >500 hours and water soak per ASTM D870-92 of 250 hours.