

**Introduction: PRD10**
**MODEL**

PRD10 - Duct Mounted, Radial Opposed Blade Damper with Adapter Ring, Steel Construction

**FEATURES**

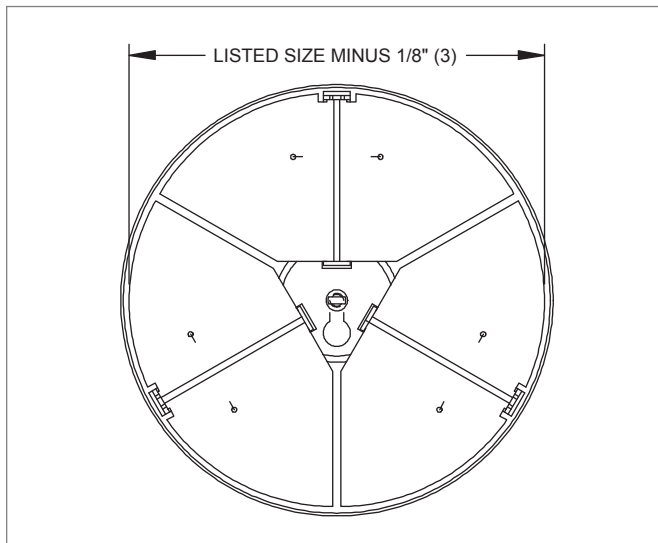
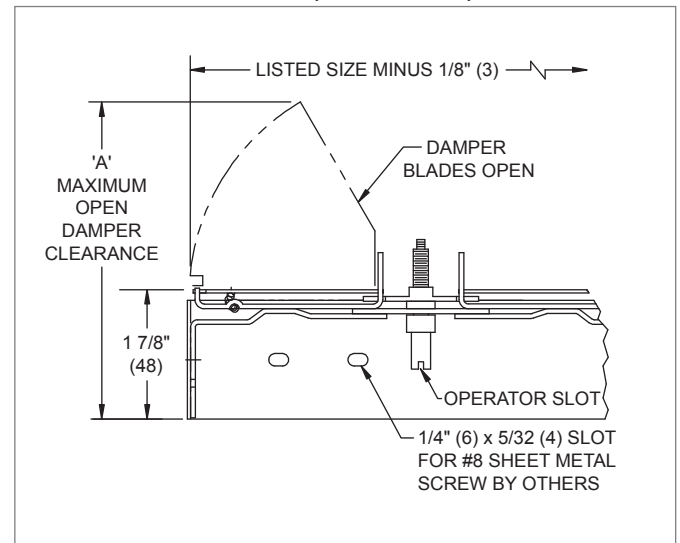
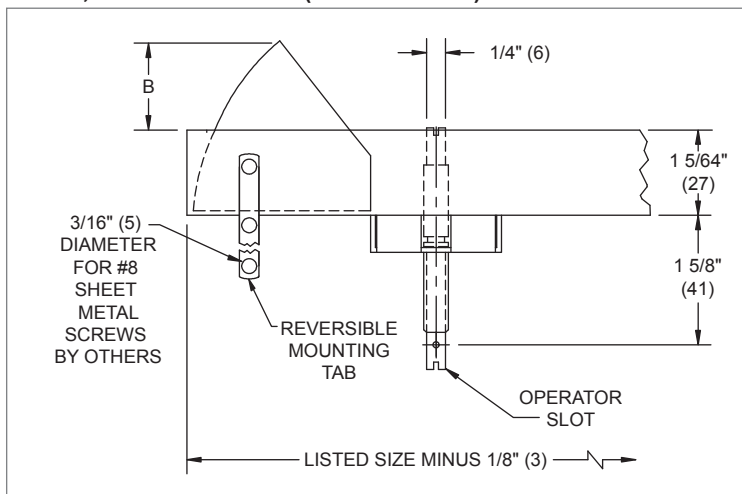
- Used for round duct applications.
- Gang operated blades distribute air evenly.
  - 3 Sets of blades for sizes 6" to 12".
  - 4 Sets of blades for sizes 14" to 20".
  - 6 Sets of blades for sizes 24", 30", and 36".
- Adjustable by flat-head screwdriver at the operator slot.
- Shipped loose for field installation.

**FINISHES**

- Standard finish is Mill (Sizes 6"-12") or Black (Sizes 14"-36").



PRD10

**PRD10 Dimensional Information**
**PRD10, FACE VIEW**

**PRD10, CROSS SECTION (SIZES 6"-12")**

**PRD10, CROSS SECTION (SIZES 14"-36")**

**AVAILABLE SIZES**

Size	A*
6" (152)	4 1/4" (108)
7" (178)	4 11/16" (119)
8" (203)	5 1/8" (130)
10" (254)	6" (152)
12" (305)	6 7/8" (175)

Size	B*
14" (356)	4 1/4" (108)
15" (381)	4 11/16" (119)
16" (406)	5 1/8" (130)
18" (457)	6" (152)
20" (508)	6 7/8" (175)
24" (610)	4 13/16" (122)
30" (762)	6 1/16" (154)
36" (914)	7 9/16" (192)

NOTES: Dimensions in parentheses are mm.  
 Reference page Q1-26 for applicable product.  
 \* Damper blade position fully open.