

Introduction: 5DMGPR, 5DMGPU

The 5DMGPR and 5DMGPU spiral duct supply grilles are designed to be installed directly on spiral duct, eliminating the need for costly register taps. Each unit is offered with a perforated face as well as an extractor damper for volume control. The 5DMGPR series features curved end caps, which fit your specific duct diameter requirements for a clean, unobtrusive appearance. For added flexibility, the 5DMGPU offers foam universal end caps, which allow one grille size to fit multiple round duct work diameters. The exceptional performance and ease of installation makes Krueger's 5DMGPR and 5DMGPU spiral duct supply grilles an ideal choice for exposed duct ceiling applications.

MODEL

5DMGPR -

Perforated spiral duct supply grille with end caps curved to fit a specific duct diameter.

5DMGPU -

Perforated spiral duct supply grille with universal end caps to accommodate multiple duct diameters.

FEATURES

- Perforated Pattern: 5/32" holes on 3/16" centers (63% free area).
- All aluminum construction.

ACCESSORIES

- Damper/Extractor

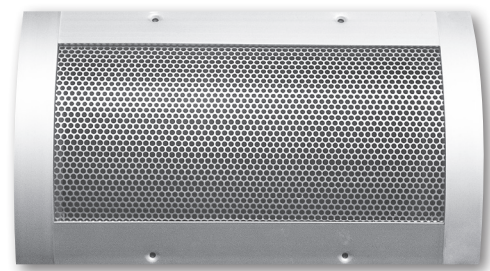
FINISHES

- Standard finish is #44 British White or #81 Clear Anodize.

RELATED DEFINITIONS

- **ENTRAINED JET:** A jet that is near enough to a ceiling or wall to become attached or develop the Coanda Effect.*

* For further information regarding entrained jets, reference [ASHRAE Handbook Fundamentals](#).



5DMGPR Radius End Cap Duct Mounted Grille, face view.



5DMGPR Radius End Cap side view (left) and 5DMGPU Universal End Cap side view (right).