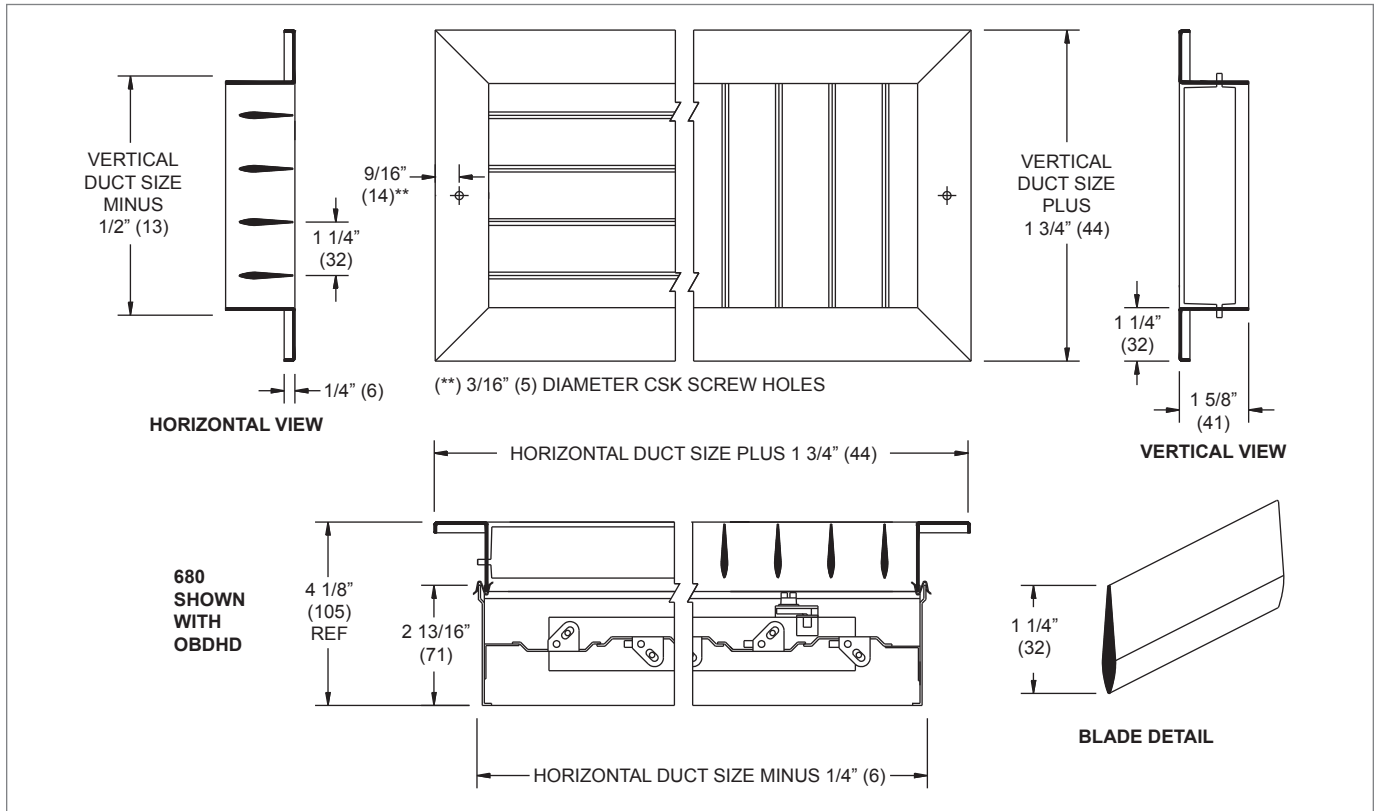
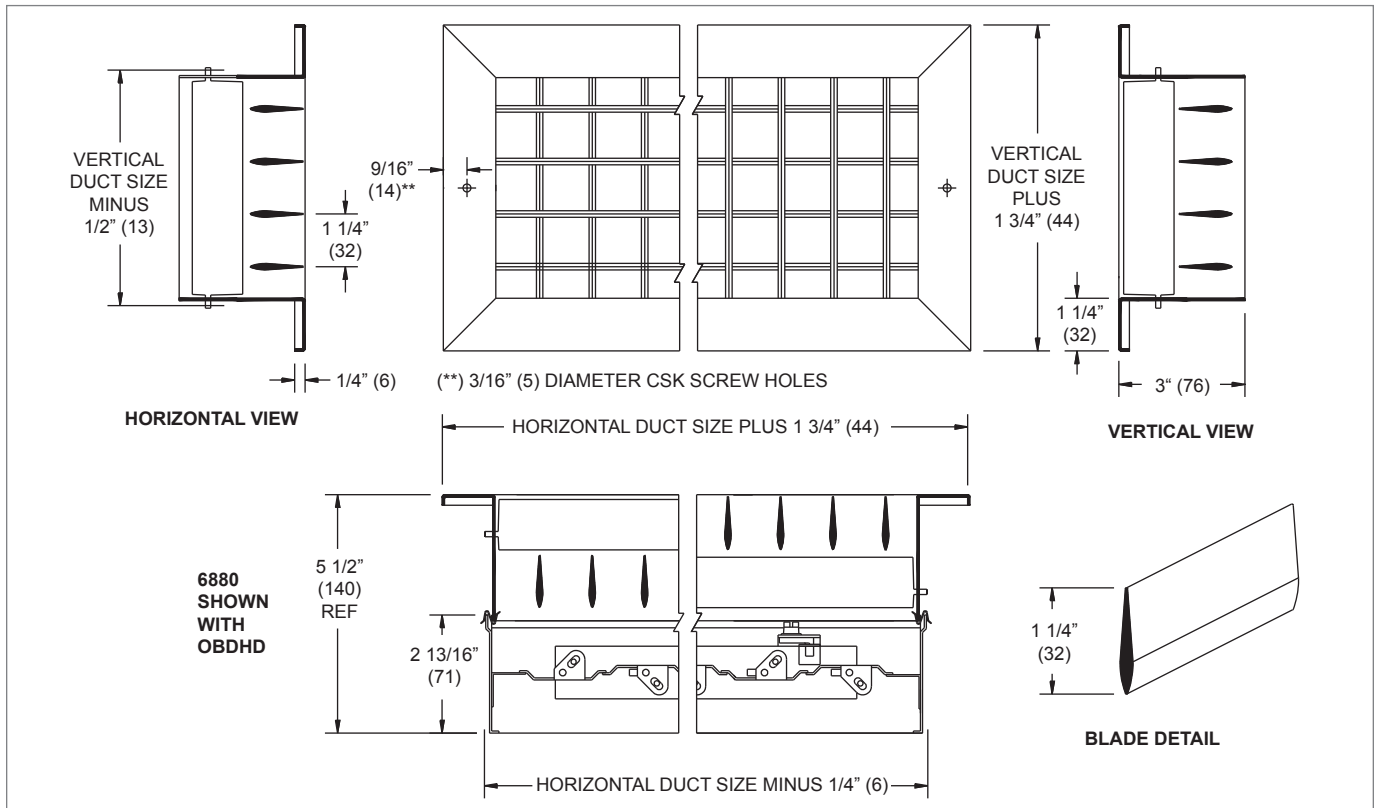


**680, 5680, 6880, 56880 Dimensional Data**

**680, 5680, 1 1/4" BLADE SPACING: FACE VIEW, SIDE VIEW, CROSS SECTIONS, & BLADE DETAIL**



**6880, 56880, 1 1/4" BLADE SPACING: FACE VIEW, SIDE VIEW, CROSS SECTIONS, & BLADE DETAIL**



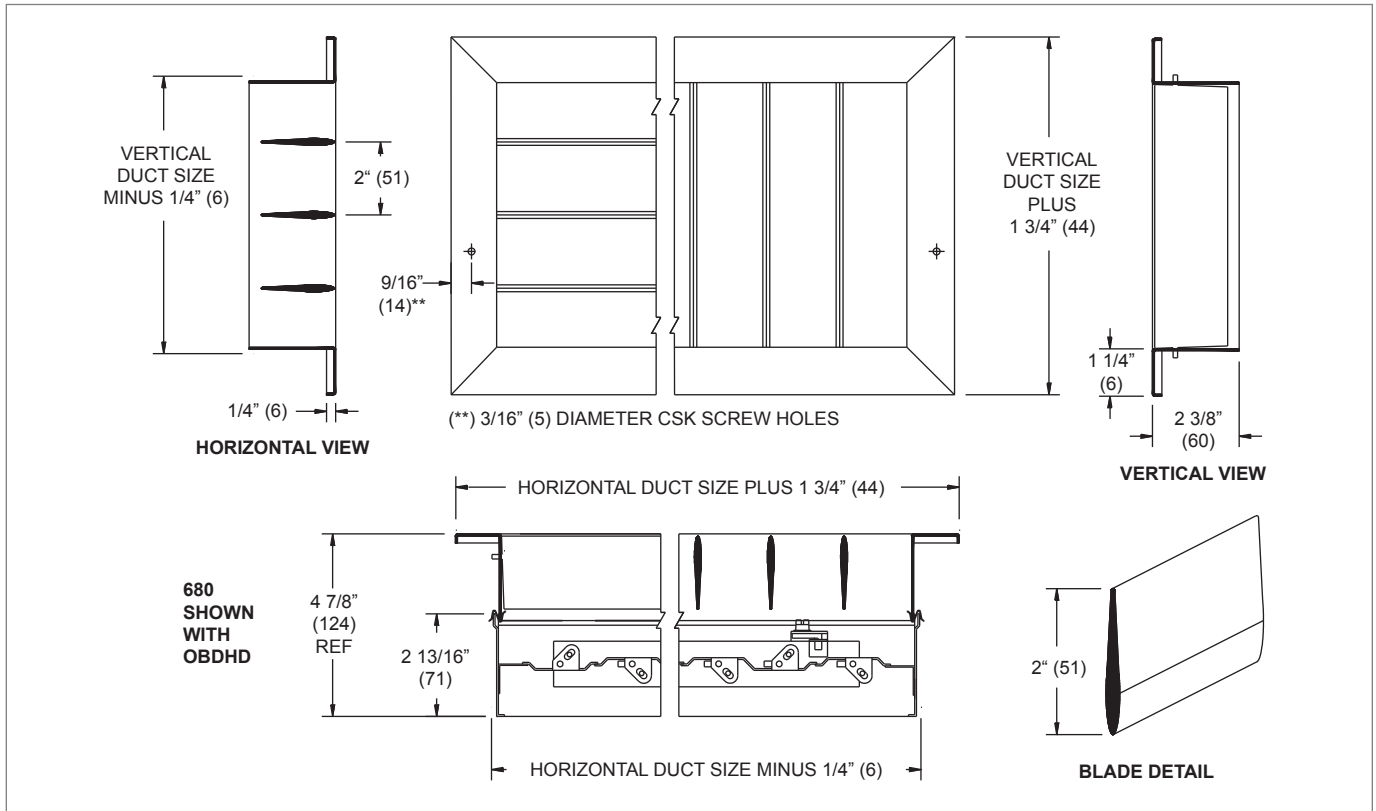
NOTE: Dimensions in parentheses are mm.

INDUSTRIAL GRILLES

680 - 5680 - 6880 - 56880 - M1 P

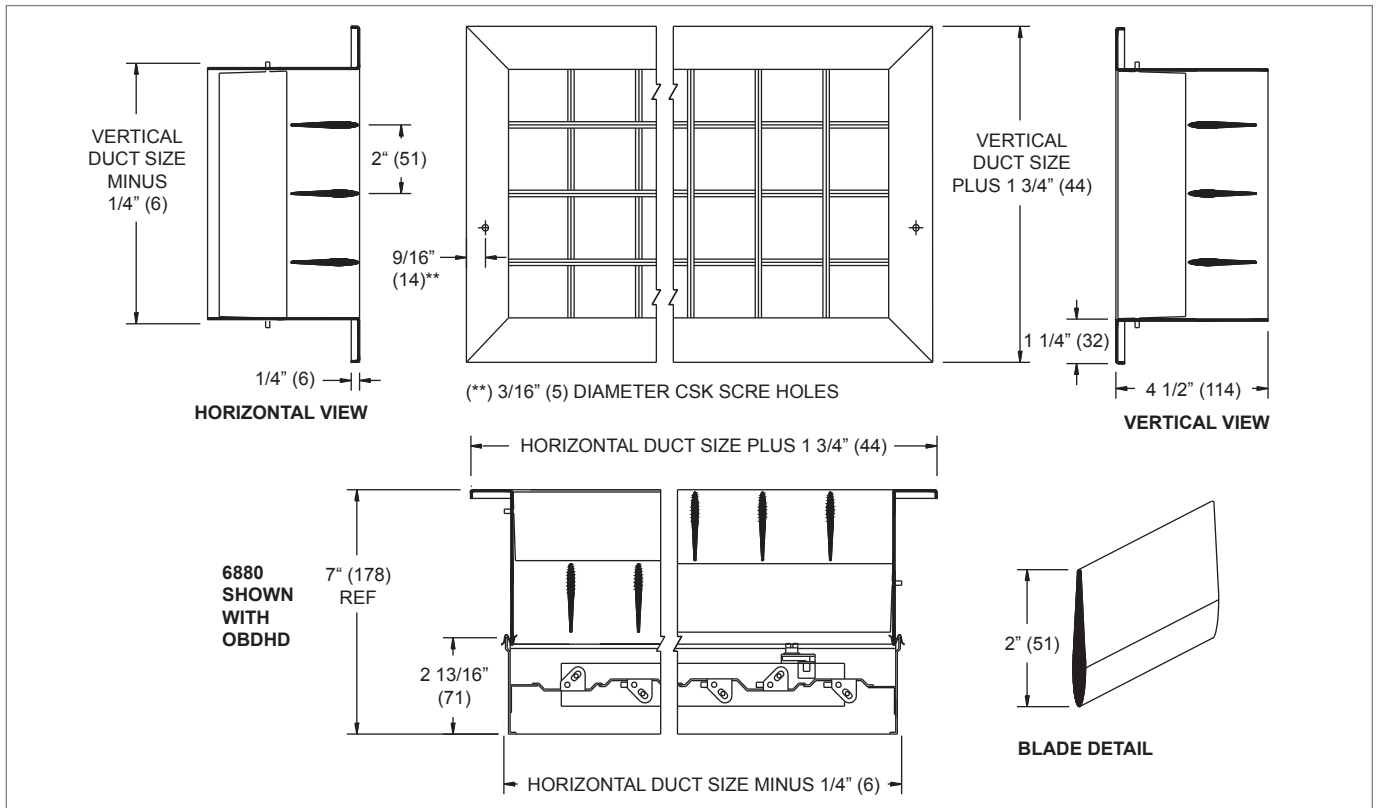
**680, 5680, 6880, 56880 Dimensional Data**

**680, 5680, 2" BLADE SPACING: FACE VIEW, SIDE VIEW, CROSS SECTIONS, & BLADE DETAIL**



INDUSTRIAL GRILLES

**6880, 56880, 2" BLADE SPACING: FACE VIEW, SIDE VIEW, CROSS SECTIONS, & BLADE DETAIL**



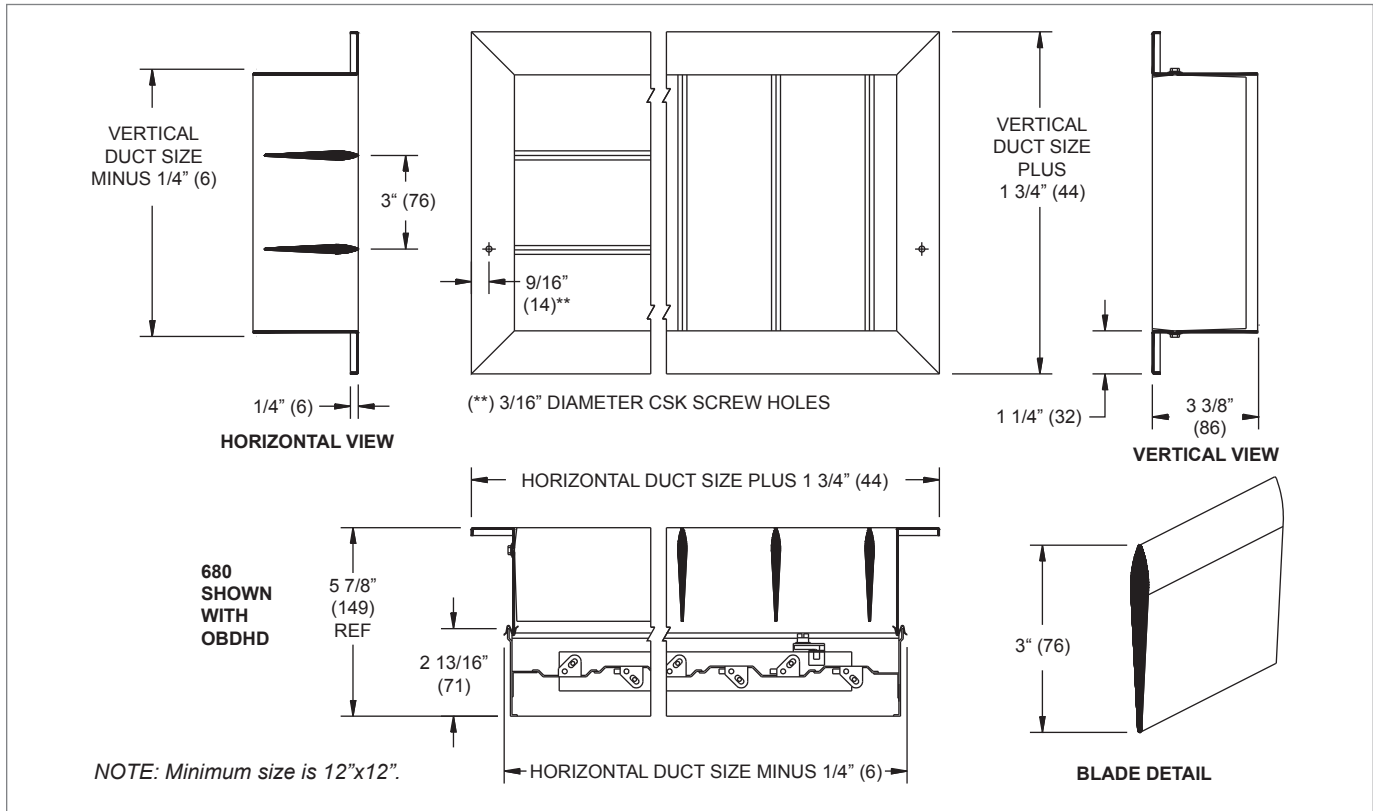
6  
8  
0  
-  
5  
6  
8  
0  
-  
6  
8  
8  
0  
-  
5  
6  
8  
8  
0  
-  
6  
8  
8  
0  
P

© KRUEGER 2012

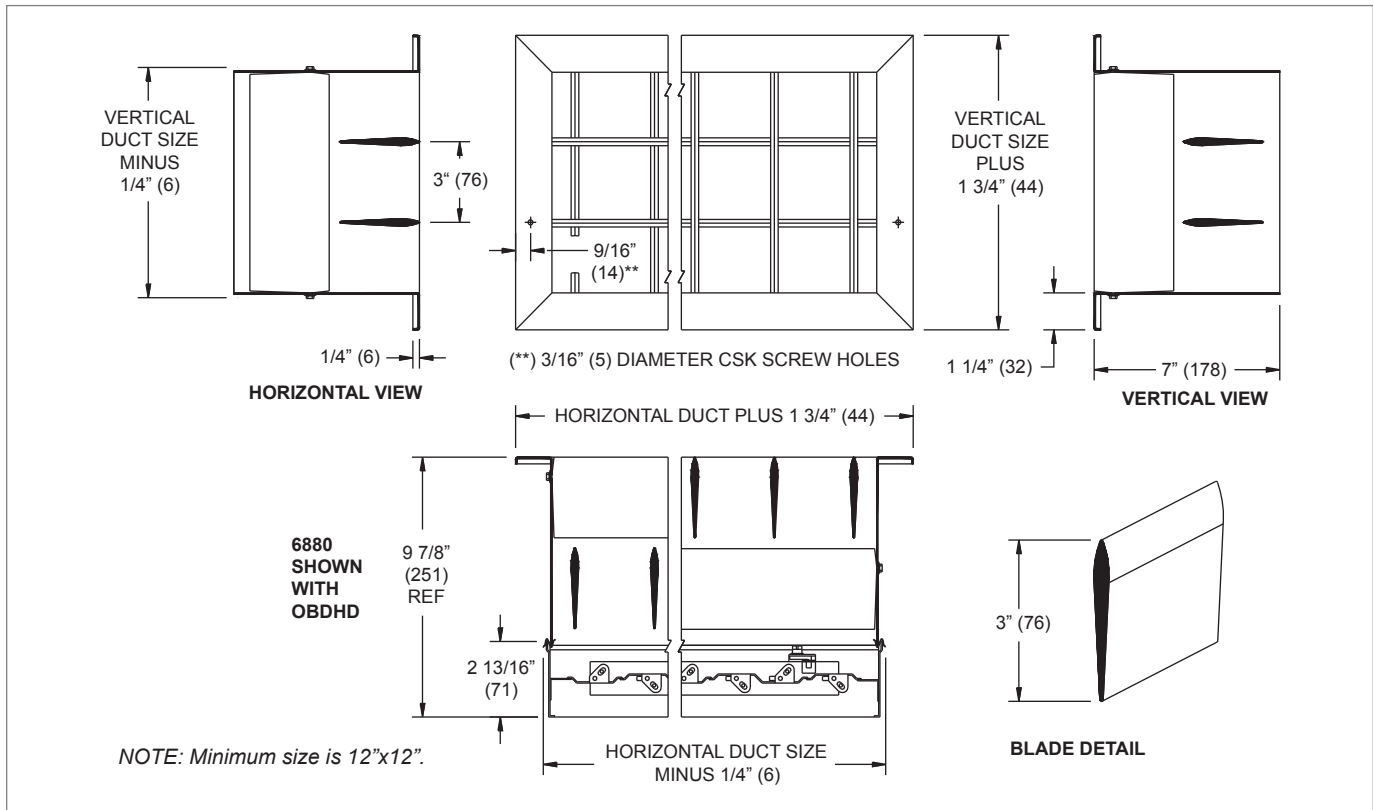
*NOTE: Dimensions in parentheses are mm.*

**680, 5680, 6880, 56880 Dimensional Data**

**680, 5680, 3" BLADE SPACING: FACE VIEW, SIDE VIEW, CROSS SECTIONS, & BLADE DETAIL**



**6880, 56880, 3" BLADE SPACING: FACE VIEW, SIDE VIEW, CROSS SECTIONS, & BLADE DETAIL**



NOTE: Dimensions in parentheses are mm.

INDUSTRIAL GRILLES

680 - 5680 - 6880 - 56880 M P

© KRUEGER 2012