

**Introduction: 1310, 1310TF, 51310**

The 1310/51310 series maximum security grilles feature a perforated face plate that makes finger penetration difficult in areas that need a secure environment. The 46% free area perforation provides minimum pressure loss, making the 1310/51310 an ideal choice for secure areas that require large amounts of supply or return air.

**MODELS**

- 1310 - Maximum security steel grille with 3/16" thick perforated face and 5/16" holes on 7/16" staggered centers.
- 1310TF - Maximum security steel transfer grille with two 3/16" thick perforated faces and 5/16" holes on 7/16" staggered centers.
- 51310 - Medium security aluminum grille with 1/8" thick perforated face and 5/16" holes on 7/16" staggered centers.

**FEATURES**

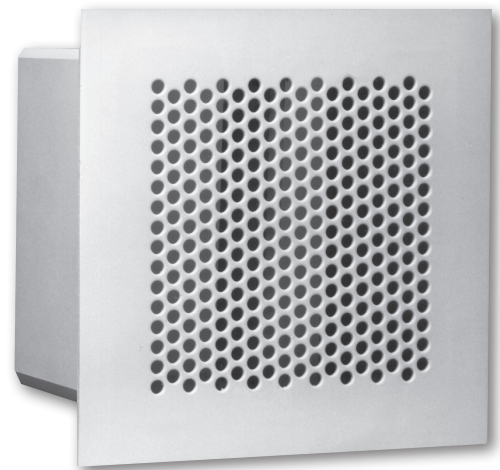
- 3/16" Thick stitch welded sleeve (steel),  
1/8" Thick stitch welded sleeve (aluminum).
- 30"x30" Maximum single unit size.
- 6", 8", 10", 12", 14", 16", and 18" Sleeve lengths.

**ACCESSORIES**

- Angle frame shipped loose and unpainted.  
(Steel is constructed of 1 1/2"x1 1/2"x3/16" angle;  
aluminum is constructed of 1 1/2"x1 1/2"x1/8" angle.)
- Security bars on 6" centers.  
(Steel is constructed of 3/4" diameter bars;  
aluminum is constructed of 1/2" diameter bars.)
- Anchor bars. (Steel is constructed of 3"x3/4" diameter bars;  
aluminum is constructed of 3"x1/2" diameter bars.)
- Two loose angles shipped loose and unpainted.  
(Steel is constructed of 1 1/2"x1 1/2"x3/16" angle;  
aluminum is constructed of 1 1/2"x1 1/2"x1/8" angle.)
- Front or rear operated OBD.

**FINISHES**

- Standard finish is #44 British White.
- Optional finish is Mill.



1310



1310TF