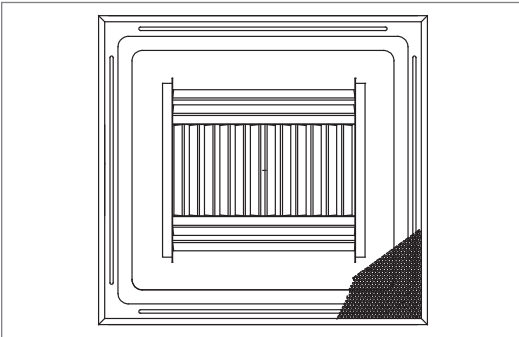
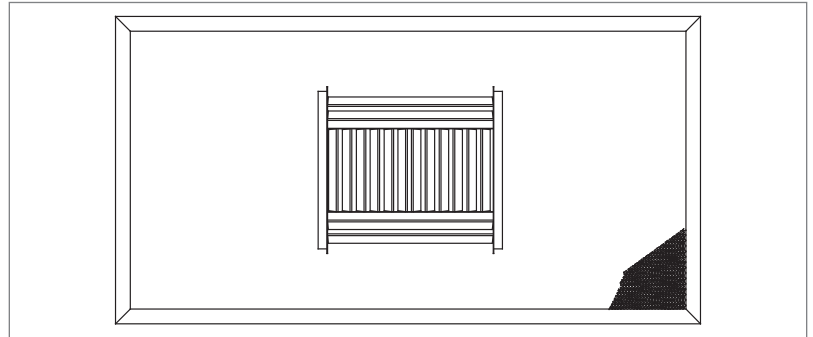
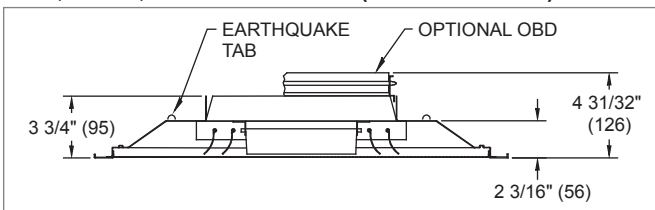
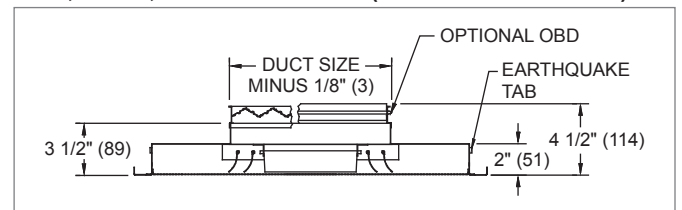
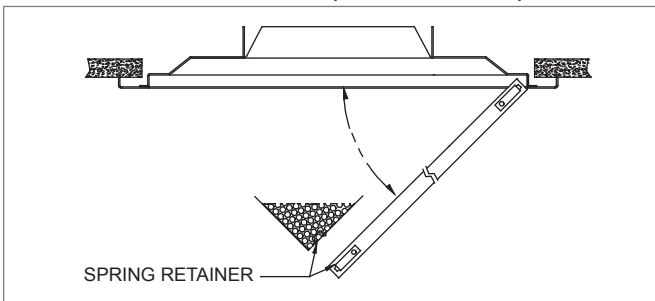
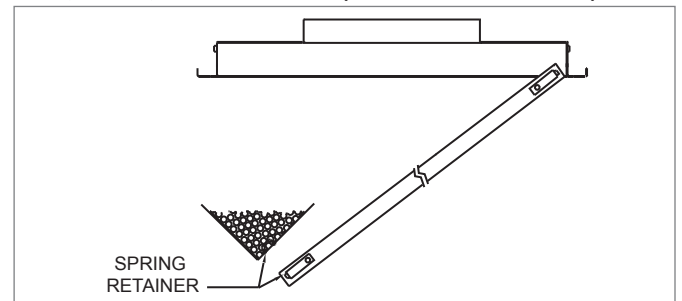
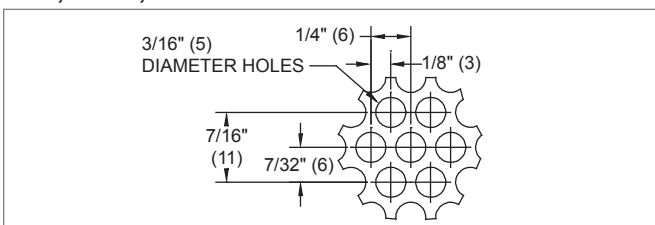
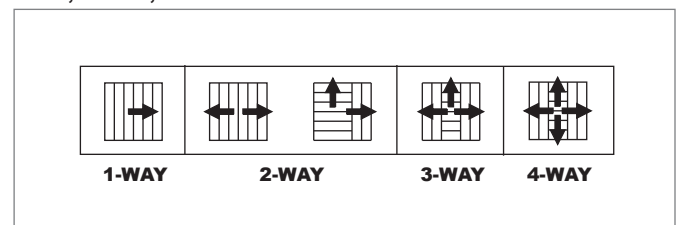


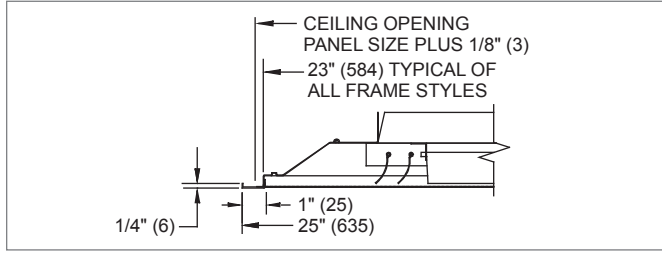
6200, 56200 (Supply) Dimensional Information
6200, 56200, FACE VIEW (24"x24" PANEL)

6200, 56200, FACE VIEW (ALL OTHER PANELS)

6200, 56200, CROSS SECTION (24"x24" PANEL)

6200, 56200, CROSS SECTION (ALL OTHER PANELS)

6200, 56200, HINGE DETAIL (24"x24" PANEL)

6200, 56200, HINGE DETAIL (ALL OTHER PANELS)

6200, 56200, PERFORATION DETAIL

6200, 56200, DISCHARGE AIR PATTERNS

6200, 56200, AVAILABLE SIZES

Neck Size	Panel Size					
	12" x 12" (305 x 305)	16" x 16" (406 x 406)	20" x 20" (508 x 508)	24" x 24" (610 x 610)	12" x 24" (305 x 610)	24" x 48" (610 x 1219)
6" x 6" (152 x 152)
8" x 8" (203 x 203)
10" x 10" (254 x 254)
12" x 12" (305 x 305)
14" x 14" (356 x 356)
16" x 16" (406 x 406)
18" x 18" (457 x 457)

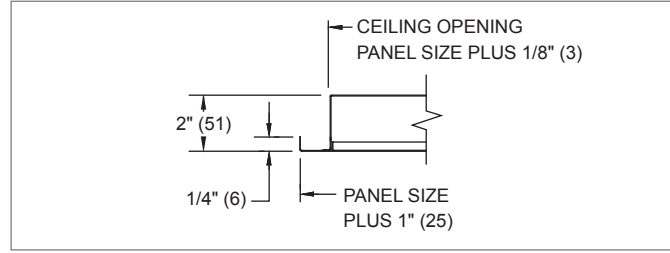
NOTES: Dimensions in parentheses are mm. Dot indicates applicable.
 The 16"x16" and 18"x18" neck sizes with a 24"x24" panel are constructed like "All Other Panels".

6200, 56200 (Supply) Frame Styles

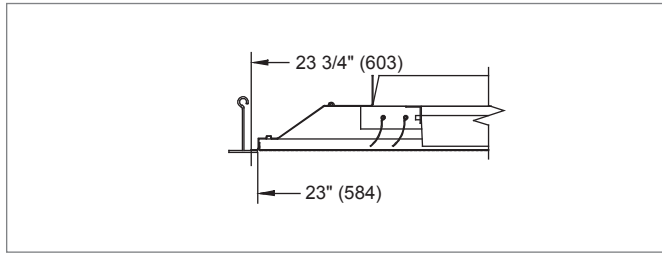
**6200, 56200, FRAME 20, SURFACE MOUNT
(24"x24" PANEL)**



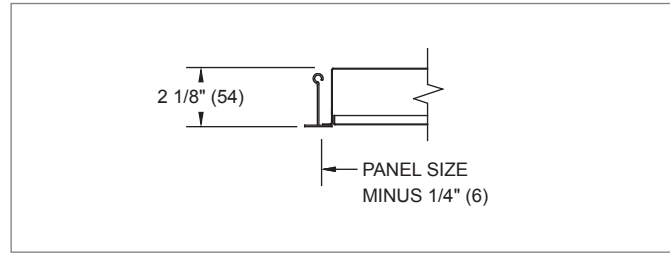
**6200, 56200, FRAME 20, SURFACE MOUNT
(ALL OTHER PANELS)**



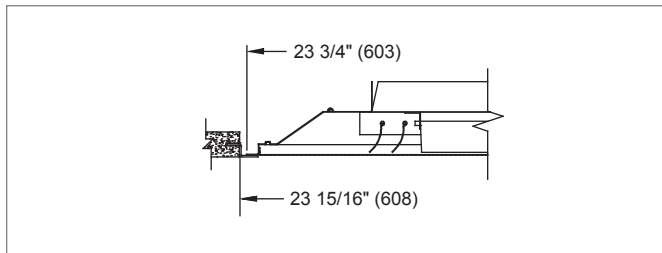
**6200, 56200, FRAME 23, LAY-IN T-BAR
(24"x24" PANEL)**



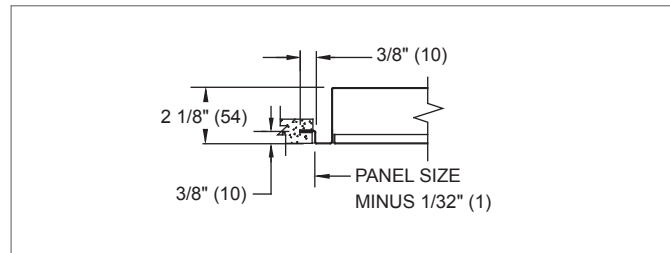
**6200, 56200, FRAME 23, LAY-IN T-BAR
(ALL OTHER PANELS)**



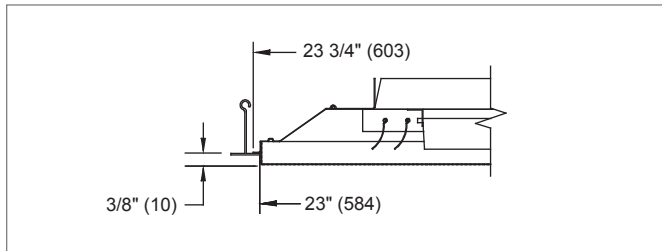
**6200, 56200, FRAME 27, SPLINE
(24"x24" PANEL)**



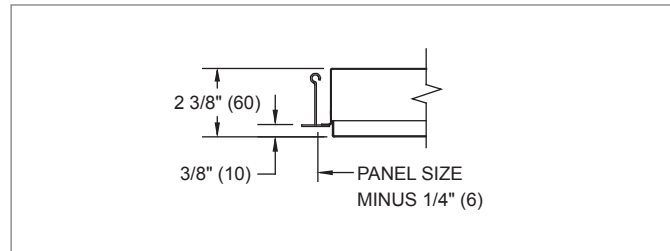
**6200, 56200, FRAME 27, SPLINE
(ALL OTHER PANELS)**



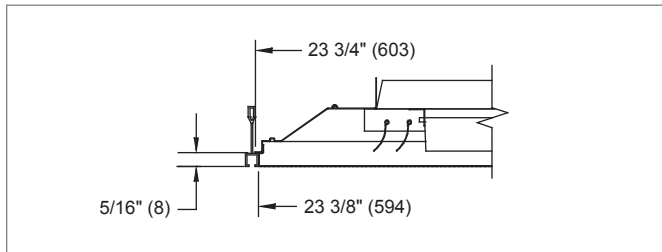
**6200, 56200, FRAME 30, DROP FACE
(24"x24" PANEL)**



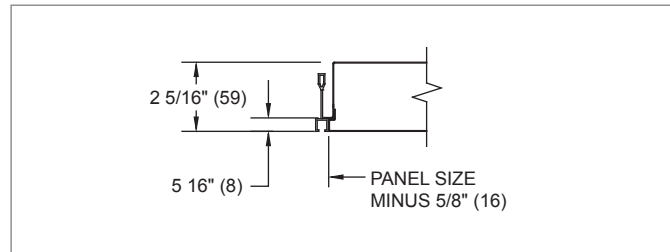
**6200, 56200, FRAME 30, DROP FACE
(ALL OTHER PANELS)**



**6200, 56200, FRAME 98, NARROW-T
(24"x24" PANEL)**



**6200, 56200, FRAME 98, NARROW-T
(ALL OTHER PANELS)**



NOTES: Dimensions in parentheses are mm. The 16"x16" and 18"x18" neck sizes with a 24"x24" panel are constructed like "All Other Panels".

PERFORATED FACE DIFFUSERS

6
2
0
0
-
5
6
2
0
0

© KRUEGER 2012