

Introduction: Prism

Krueger's Prism diffuser represents a new way of thinking about today's air distribution. Instead of concealing the diffuser, as many have in the past, Krueger has chosen to use it as a tool to compliment the interior design in your office or work environment without sacrificing aesthetics.

The Prism's structure is created from a one-piece, steel stamped face that locks into a one-piece, steel stamped round or square neck backpan. The face is removable for easy access to neck mounted dampers and is offered separately to retrofit most snap-in, perforated series ceiling diffusers. (Contact Krueger for your specific application needs.)

Offering a high induction, 4-way horizontal blow pattern, the Prism delivers excellent room air mixing, which makes it superior for VAV applications. Additionally, the Prism has comparable sound performance to traditional square ceiling diffusers.

In addition to high performance and great aesthetics, the Prism's most exceptional trait is the availability of a wide array of appliqué, which are available in nine standard colors or in any custom color to match your interior décor. Furthermore, you may have your company logo or pattern screened on to the appliqué for a more dramatic effect.

With its striking features and colorful appliqué options, coupled with a variety of frame styles, neck sizes, and paint options, Krueger's Prism will suit your interior decoration needs.

MODEL

PRISM - One-piece Steel Faceplate and
One-piece Steel Backpan

FEATURES

- Nine standard appliqué colors to match interior décor.
- Faceplate retrofits with most existing snap-in, perforated diffusers without removal of backpan or duct work.

PANEL SIZE

- 24"x24"

OPTIONS

- Custom appliqué color matching available using any standard color scheme, such as Pantone®* or Trumatch®**.
- Appliqué available with screened logo or pattern.
- Prism available without appliqué.
- Appliqué sold separately.
- Prism faceplate is sold separately for retrofit applications.

FINISHES

- Standard finish is #44 British White.
- Optional finishes available.

* Pantone®, Pantone Matching System, and Pantone Professional Color System are trademarks of Pantone, Inc. **Trumatch® is a registered trademark of Trumatch, Inc.



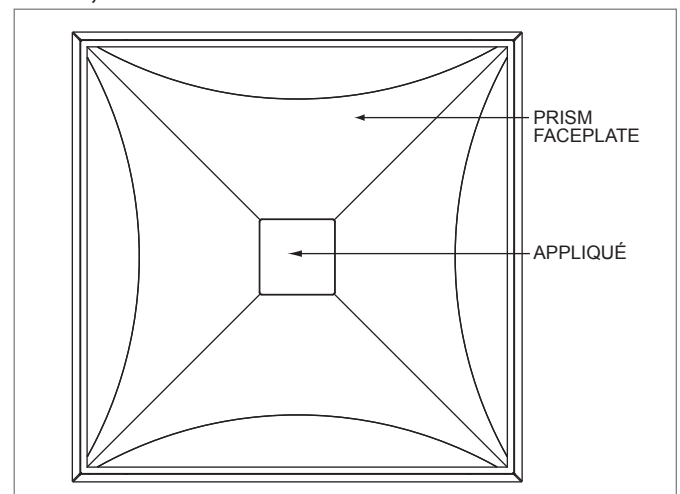
Prism with white center appliqué.



Prism with light grey appliqué.

Prism Product Description

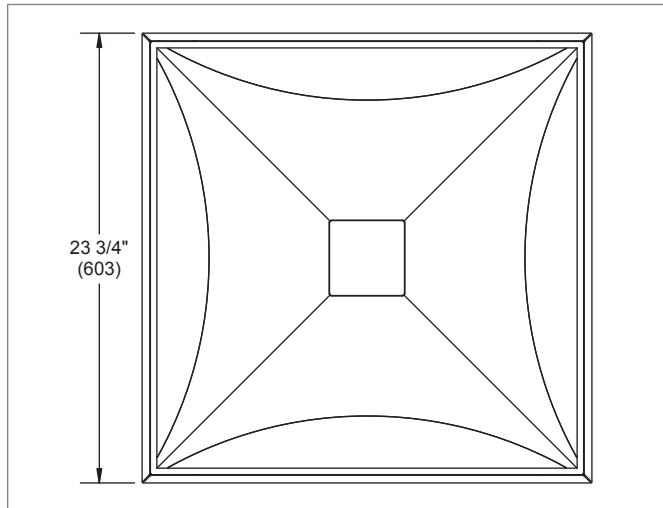
PRISM, FACE VIEW



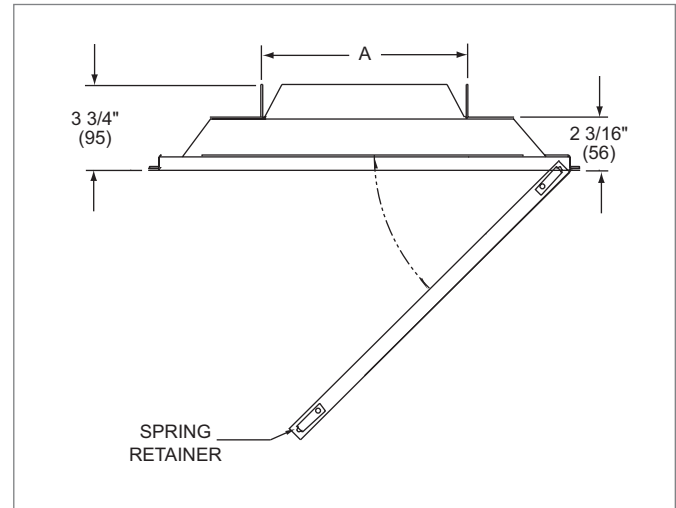
NOTE: Nine standard appliqué colors available: British White, Off White, Light Gray, Medium Gray, Light Beige, Medium Beige, Blue-Gray, Olive, and Rust.

Prism Dimensional Information

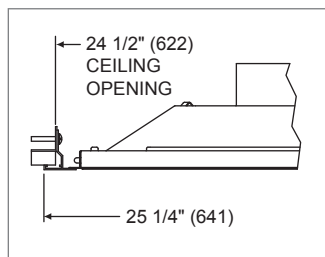
PRISM, FACE VIEW



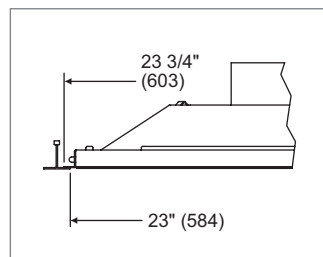
PRISM, CROSS SECTION, SQUARE NECK



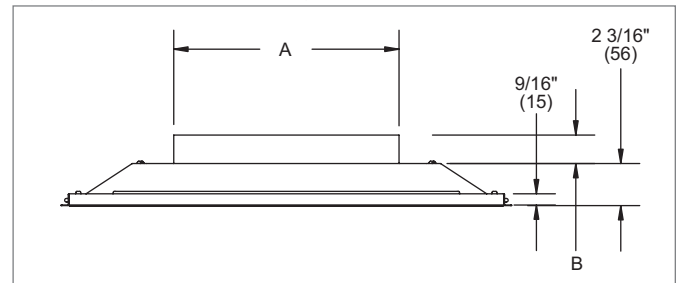
PRISM, FRAME 22
SURFACE MOUNT



PRISM, FRAME 23
LAY-IN T-BAR



PRISM, CROSS SECTION, ROUND NECK



PRISM, AVAILABLE ROUND NECK SIZES

Neck Size	A	B
6" (152)	5 7/8" (149)	1" (25)
8" (203)	7 7/8" (200)	1" (25)
10" (254)	9 7/8" (251)	1 1/2" (38)
12" (305)	11 7/8" (302)	1 1/2" (38)
14" (356)	13 7/8" (352)	1 1/2" (38)
16" (406)	15 7/8" (404)	1 1/2" (38)

PRISM, AVAILABLE SQUARE NECK SIZES

Neck Size	A
6" x 6" (152 x 152)	5 7/8" (149)
8" x 8" (203 x 203)	7 7/8" (200)
10" x 10" (254 x 254)	9 7/8" (251)
12" x 12" (305 x 305)	11 7/8" (302)
14" x 14" (356 x 356)	13 7/8" (352)

NOTE: Dimensions in parentheses are mm.

Prism Appliqué Information

The intended use for the appliqué is on the Krueger Prism ceiling diffuser. The appliqué consists of a matte substrate with an adhesive backing and are individually die cut for precision and consistency. It is fitted to a pre-formed square embossment in the center of the faceplate with the purpose of providing color and soft texture. The appliqué is applied after the diffuser is painted.

Krueger offers nine standard colors to choose from, or you can pick your own color from any major color guide. Also, you have the option of having your logo screened onto the appliqué for an even more professional effect.

Stand-alone replacement appliqué, standard or custom, are available separately to modify existing Prism applications, should the interior décor change.

CUSTOM APPLIQUÉS

- Custom color matching requires that two 2"x2" paint or color chip samples are supplied to Krueger.
- Custom logo screening requires that a high resolution, digital image is supplied to Krueger (3.96"x3.96" viewing size).

Prism Appliqué Information & Specifications

Whether you choose one of our nine standard colors, or one of your own, you can count on premium quality and consistency of color with every appliqué. The process in which color is applied allows us to match any given color to $\pm .5\Delta E$, where a difference of $1.0\Delta E$ is the limit to which the average person is able to discern two colors as different. So brighten up your décor with the Prism today!

APPLIQUÉ SPECIFICATIONS

- 0.017" Polycarbonate substrate with opacity film.
- 0.002" Adhesive with peel-off backing.
- 0.019" Total thickness.

NOTES: See appliqué color guide in the back of the catalog. Contact your local Krueger representative to obtain sample appliqué swatches.

Prism Retrofit Information

PERFORATED DIFFUSER



Shown is a typical perforated supply ceiling diffuser. Before beginning the retrofit process, verify that the existing diffuser backpan has the necessary slotted hole to receive the Prism diffuser face spring clip (see corner detail).

REMOVAL OF CORE & PERFORATED FACE



STEP 1: Disengage the perforated diffuser face to access the backpan. Remove the stamped or curved blade core from the backpan, then remove the perforated face.

REPLACEMENT WITH PRISM FACE



STEP 2: Clip the Prism diffuser face into the exiting backpan.

PRISM DIFFUSER



Shown is a completed retrofit without disconnecting duct work/flex duct or removing the existing backpan.