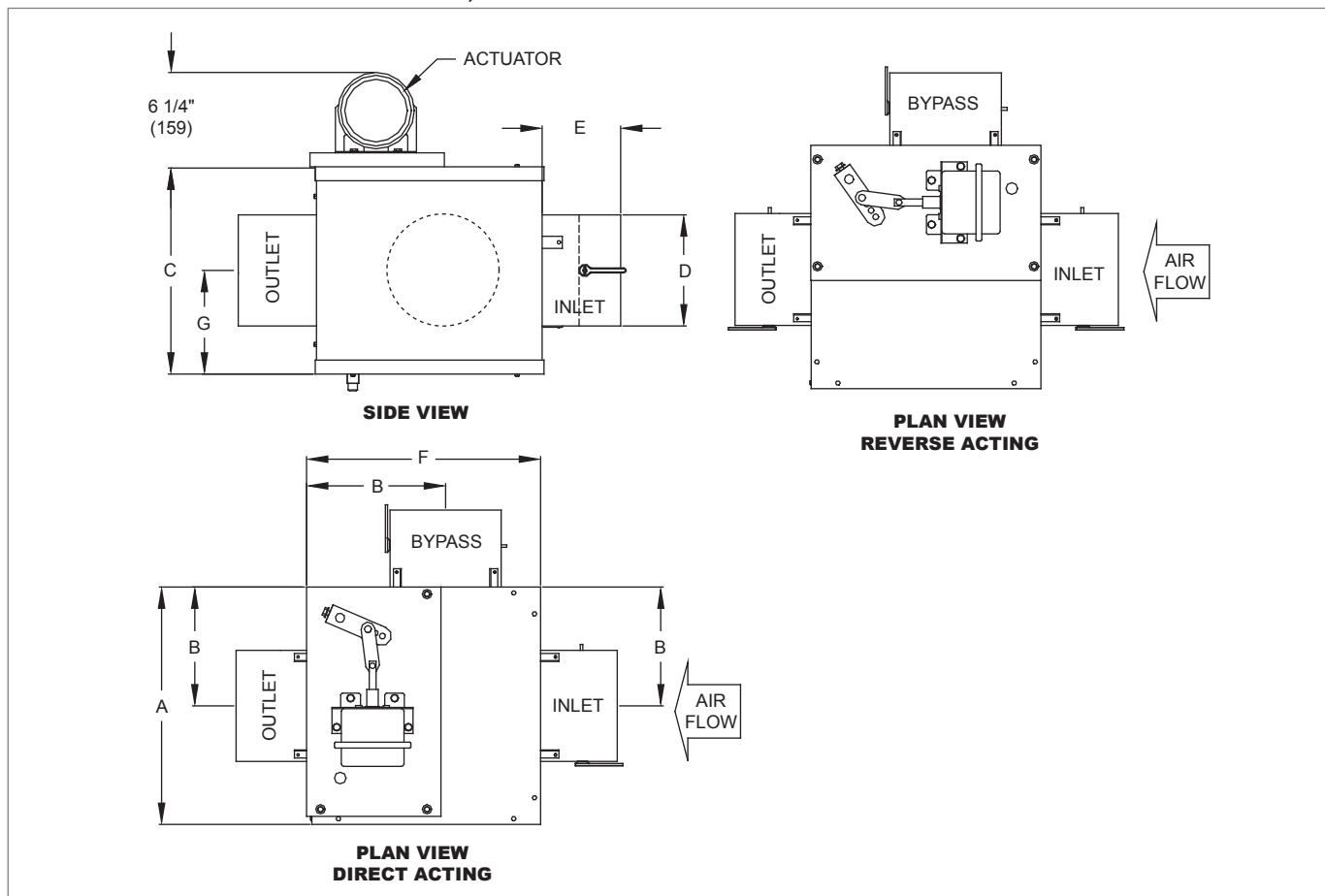


KLB Unit with Pneumatic Controls Dimensional Information
KLB UNIT WITH PNEUMATIC CONTROLS, PLAN & SIDE VIEWS


RETROFIT/BYPASS TERMINAL UNITS

KLB UNIT WITH PNEUMATIC CONTROLS, DIMENSIONAL DETAILS

Unit Size	Max. CFM [L/s]	A	B	C	D	E	F	G
6	500 [236]	12 7/8" (327)	7 1/8" (182)	11 1/8" (283)	5 7/8" (149)	4 1/4" (108)	12 3/8" (314)	5 9/16" (141)
8	900 [425]	12 7/8" (327)	7 1/8" (182)	11 1/8" (283)	7 7/8" (200)	5 1/4" (133)	12 3/8" (314)	5 9/16" (141)
10	1300 [614]	14 7/8" (378)	8 1/8" (210)	13 1/8" (333)	9 7/8" (251)	6 1/4" (159)	14 3/8" (365)	6 9/16" (167)
12	2000 [944]	18 7/8" (479)	10 1/8" (257)	17 1/8" (435)	11 7/8" (302)	7 1/4" (184)	18 3/8" (467)	8 9/16" (217)
14	2500 [1180]	18 7/8" (479)	10 1/8" (257)	17 1/8" (435)	13 7/8" (352)	8 1/4" (210)	18 3/8" (467)	8 9/16" (217)
16	3600 [1699]	22 7/8" (581)	12 1/8" (308)	21 1/8" (537)	15 7/8" (403)	9 1/4" (235)	22 3/8" (568)	10 9/16" (268)
18	4400 [2077]	22 7/8" (581)	12 1/8" (308)	21 1/8" (537)	17 7/8" (454)	10 1/4" (260)	22 3/8" (568)	10 9/16" (268)

NOTES: Dimensions in parentheses are mm. 'D' dimension is diameter of inlet, bypass, and outlet connections. Unit may be job site rotated 180° to have controls located on the bottom of the unit.

KLB Unit with Pneumatic Controls Features & Options
STANDARD FEATURES

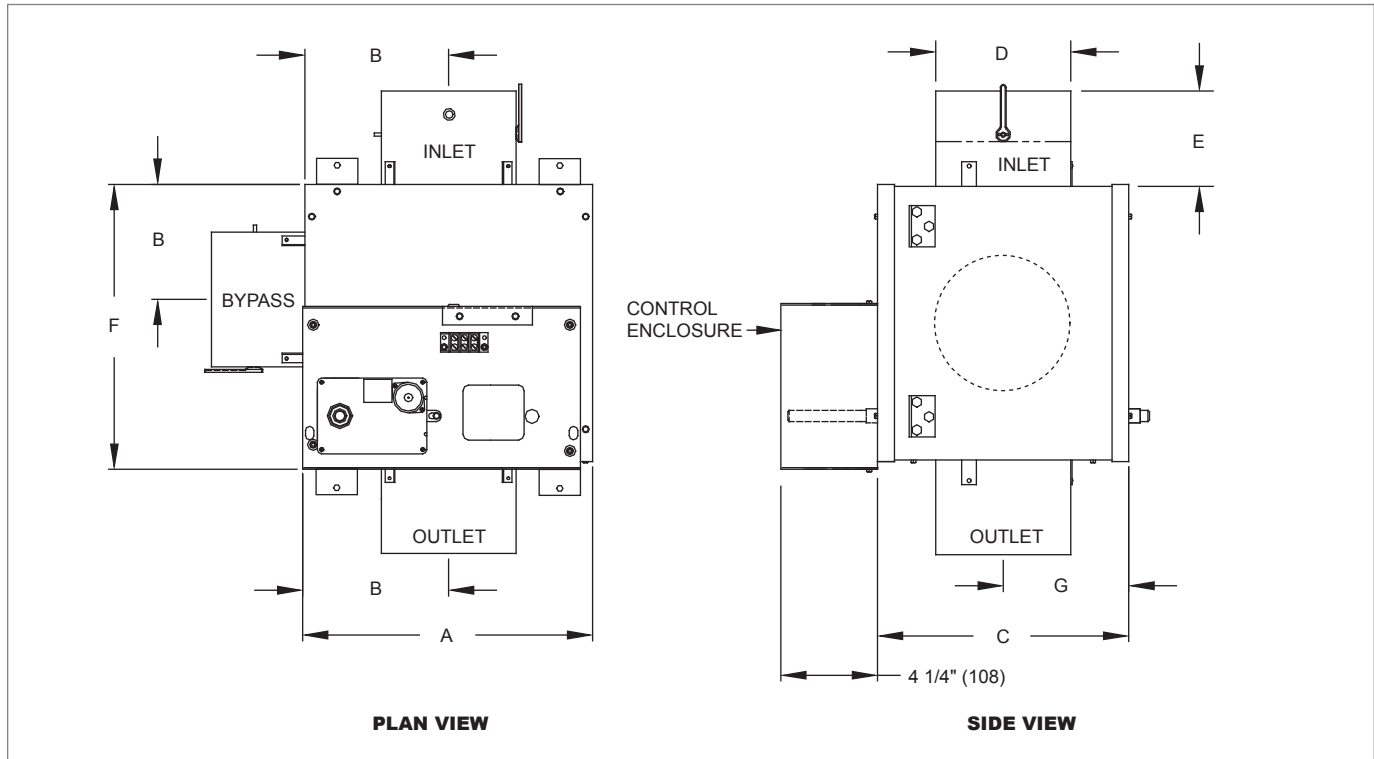
- 20 Gage galvanized steel casing construction.
- 1/2" Thick Dual Density Fiberglass Insulation that meets NFPA 90A and UL 181 safety requirements.
- Bypass discharge collar.
- Outlet discharge collar.
- 5-10 psi spring range actuator.
- Balancing damper operates on a 0-20 psi thermostat signal.

OPTIONAL FEATURES

- Manual inlet damper.
- Manual bypass damper.
- Hanger brackets.
- Thermostat.

KLB Unit with Electric Controls Dimensional Information

KLB UNIT WITH ELECTRIC CONTROLS, PLAN & SIDE VIEWS



KLB UNIT WITH ELECTRIC CONTROLS, DIMENSIONAL DETAILS

Unit Size	Max. CFM [L/s]	A	B	C	D	E	F	G
6	500 [236]	12 7/8" (327)	7 1/8" (182)	11 1/8" (283)	5 7/8" (149)	4 1/4" (108)	12 3/8" (314)	5 9/16" (141)
8	900 [425]	12 7/8" (327)	7 1/8" (182)	11 1/8" (283)	7 7/8" (200)	5 1/4" (133)	12 3/8" (314)	5 9/16" (141)
10	1300 [614]	14 7/8" (378)	8 1/8" (210)	13 1/8" (333)	9 7/8" (251)	6 1/4" (159)	14 3/8" (365)	6 9/16" (167)
12	2000 [944]	18 7/8" (479)	10 1/8" (257)	17 1/8" (435)	11 7/8" (302)	7 1/4" (184)	18 3/8" (467)	8 9/16" (217)
14	2500 [1180]	18 7/8" (479)	10 1/8" (257)	17 1/8" (435)	13 7/8" (352)	8 1/4" (210)	18 3/8" (467)	8 9/16" (217)
16	3600 [1699]	22 7/8" (581)	12 1/8" (308)	21 1/8" (537)	15 7/8" (403)	9 1/4" (235)	22 3/8" (568)	10 9/16" (268)
18	4400 [2077]	22 7/8" (581)	12 1/8" (308)	21 1/8" (537)	17 7/8" (454)	10 1/4" (260)	22 3/8" (568)	10 9/16" (268)

NOTES: Dimensions in parentheses are mm. 'D' dimension is diameter of inlet, bypass, and outlet connections. Unit may be job site rotated 180° to have controls located on the bottom of the unit.

KLB Unit with Electric Controls Features & Options

STANDARD FEATURES

- 20 Gage galvanized steel casing construction.
- 1/2" Thick Dual Density Fiberglass Insulation that meets NFPA 90A and UL 181 safety requirements.
- Bypass collar.
- Round discharge to room.
- 24 VAC actuator.

OPTIONAL FEATURES

- Manual inlet damper.
- Manual bypass damper.
- Balancing damper.
- Hanger brackets.
- Thermostat.
- 24 Volt transformer.

RETROFIT/BYPASS TERMINAL UNITS

K
L
B