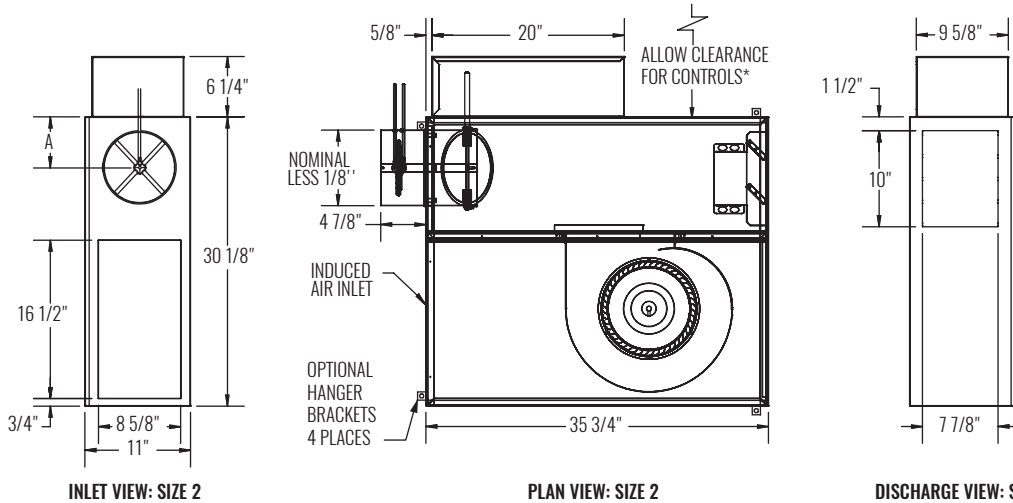


DIMENSIONAL DATA | BASE UNIT

SIZE 2		
INLET SIZE	A	
06"	5"	
08"	6"	
10"	7"	

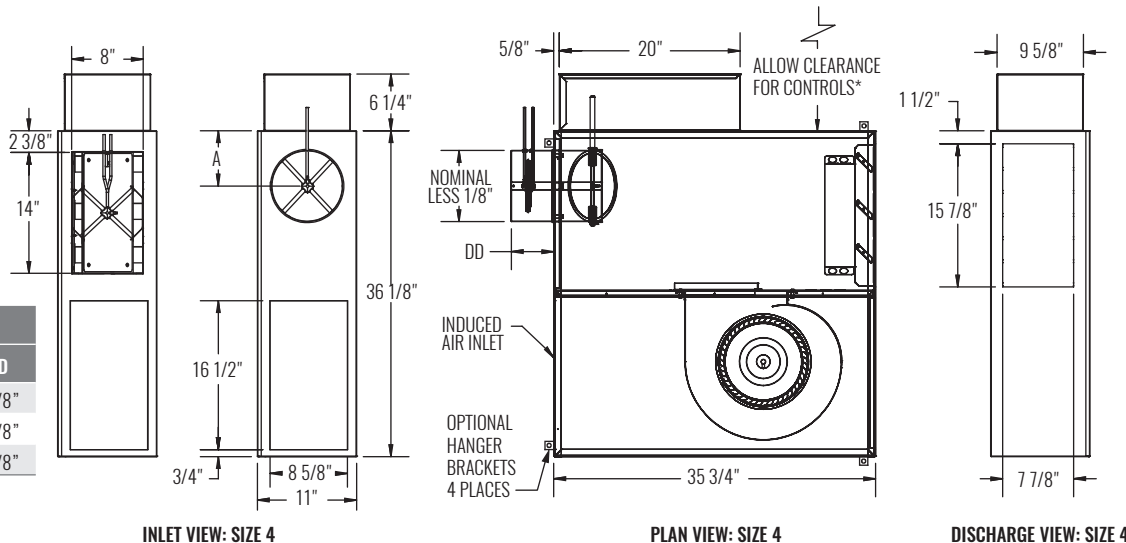


INLET VIEW: SIZE 2

PLAN VIEW: SIZE 2

DISCHARGE VIEW: SIZE 2

SIZE 4			
INLET SIZE	A	DD	
08"	7"	4 7/8"	
10"	9"	4 7/8"	
12" (8"x14")	-	3 7/8"	



INLET VIEW: SIZE 4

PLAN VIEW: SIZE 4

DISCHARGE VIEW: SIZE 4

* Check NEC for unit clearance requirements.

NOTE: Left-hand base unit with electronic control enclosure shown; right-hand is available.

STANDARD FEATURES

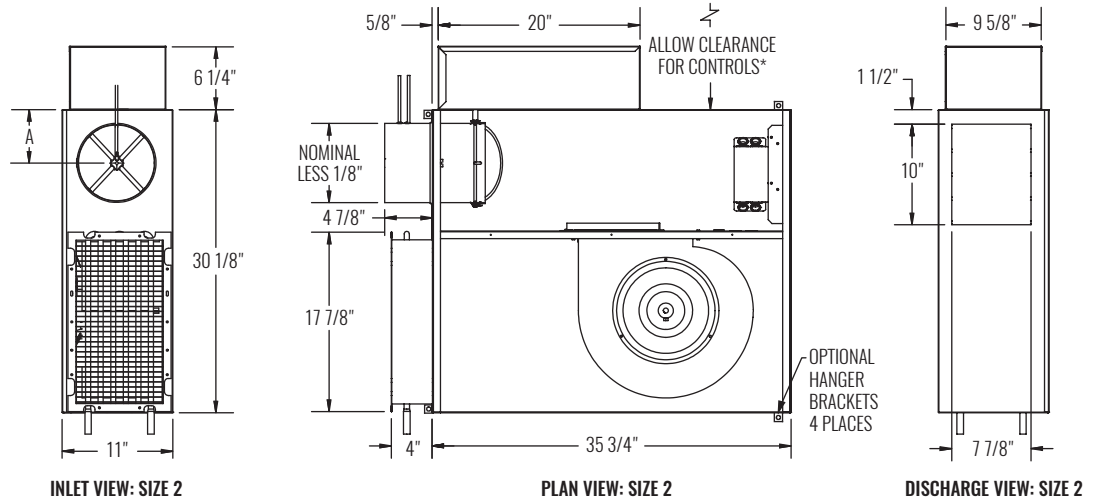
- 20 gage galvanized steel casing construction
- Height is 11"
- Control enclosure for electronic components
- 1/2" thick, dual density fiberglass insulation that meets NFPA 90A and UL 181 safety requirements
- [120, 208/240, or 277 volt, single-voltage, 1-phase, single speed] permanently lubricated PSC motors
- Field adjustable fan speed controller
- Removable bottom panel allows easy access to all internal components for maintenance
- Four quadrant, center averaging airflow sensor
- Includes 24 volt control transformer
- ETL listed; adherence to UL 60335-2-40 and CSA C22.2 No. 60335-2-40
- AHRI certified sound ratings

OPTIONAL FEATURES

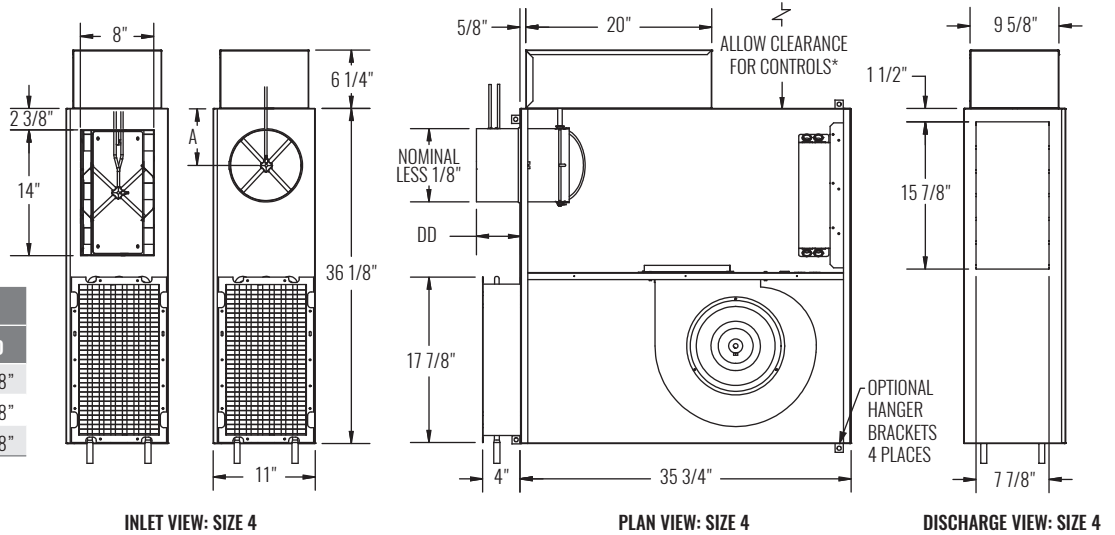
- Liners: 1/2" Cellular insulation, 1/2" Foil encapsulated fiberglass insulation, Sterilwall, or Perforated doublewall
- Linear averaging airflow sensor
- [120, 208/240, or 277 volt, single-voltage] ECM motor with manual or remote adjustable speed controller
- Left-hand or right-hand control enclosure
- Motor toggle disconnect switch
- Motor fusing
- Induced air filter, construction type; 18"x11"x1"
- Hanger brackets

DIMENSIONAL DATA | BASE UNIT WITH HOT WATER HEAT

SIZE 2	
INLET SIZE	A
06"	5"
08"	6"
10"	7"



SIZE 4		
INLET SIZE	A	DD
08"	7"	4 7/8"
10"	9"	4 7/8"
12" (8"x14")	-	3 7/8"



* Check NEC for unit clearance requirements.

NOTE: Left-hand base unit with electronic control enclosure shown; right-hand is available.

STANDARD FEATURES

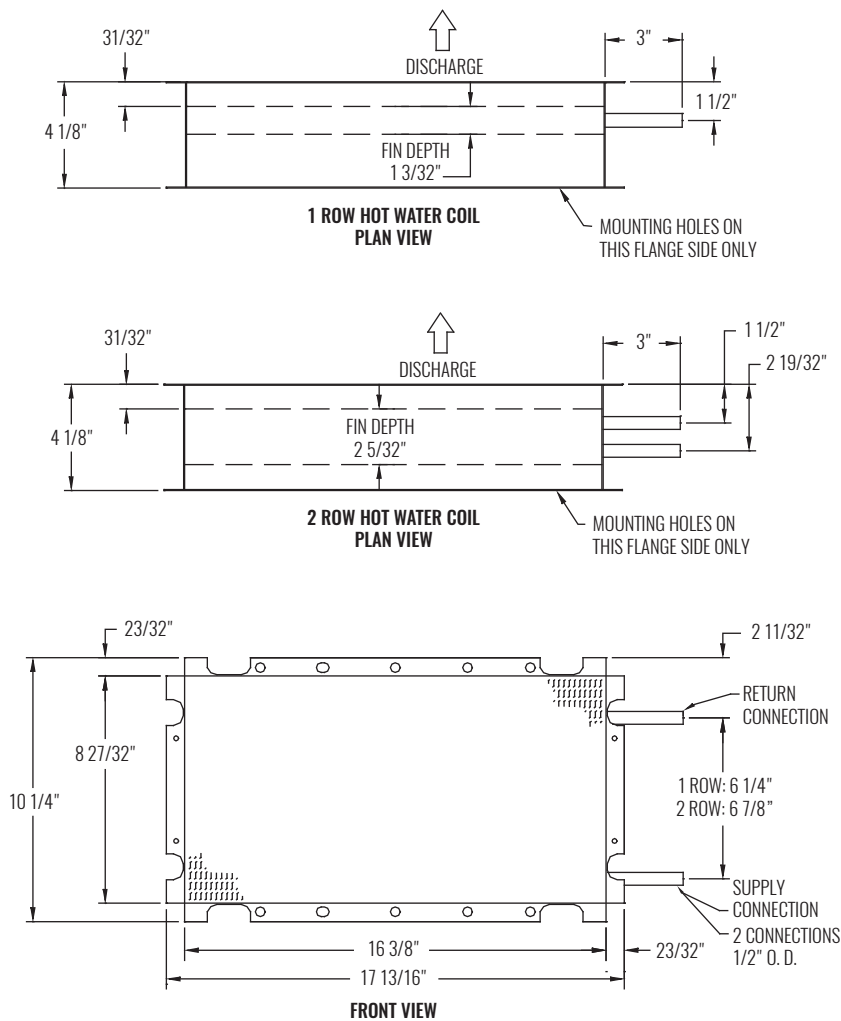
- 20 gage galvanized steel casing construction
- Height is 11"
- Control enclosure for electronic components
- 1/2" thick, dual density fiberglass insulation that meets NFPA 90A and UL 181 safety requirements
- [120, 208/240, or 277 volt, single-voltage, 1-phase, single speed] permanently lubricated PSC motors
- Field adjustable fan speed controller
- Removable bottom fan panel allows easy access to all internal components for maintenance
- Four quadrant, center averaging airflow sensor
- Includes 24 volt control transformer
- ETL listed; adherence to UL 60335-2-40 and CSA C22.2 No. 60335-2-40
- AHRI certified sound ratings

OPTIONAL FEATURES

- Liners: 1/2" Cellular insulation, 1/2" Foil encapsulated fiberglass insulation, Sterilwall, or Perforated doublewall
- Linear averaging airflow sensor
- [120, 208/240, or 277 volt, single-voltage] ECM motor with manual or remote adjustable speed controller
- Left-hand or right-hand control enclosure
- Left-hand or right-hand hot water coil connection; hot water coil connection is opposite of control enclosure
- Motor toggle disconnect switch
- Motor fusing
- Induced air filter, construction type; 18"x11"x1"
- Dust tight control enclosure
- Hanger brackets

TERMINAL UNITS | FAN POWERED

DIMENSIONAL DATA | HEATING COIL



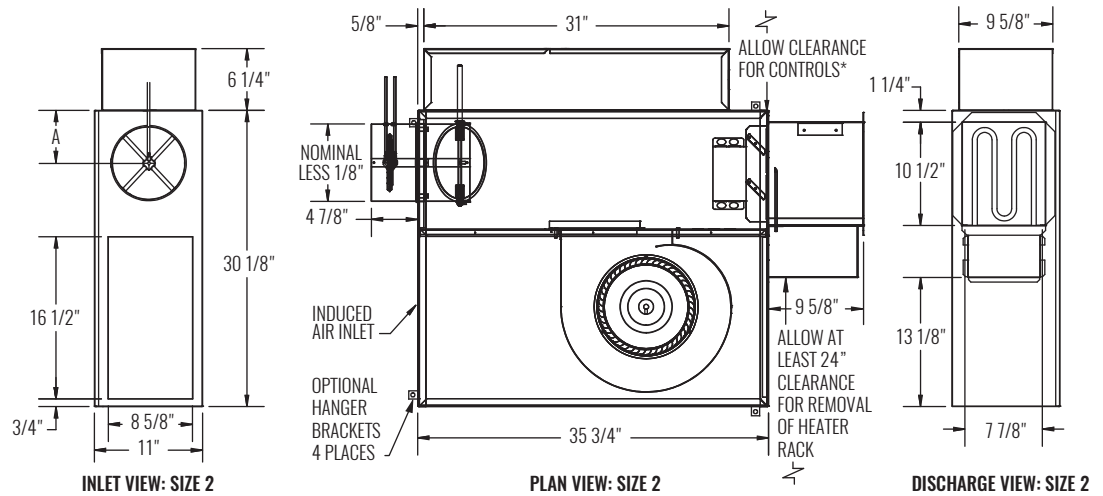
STANDARD FEATURES

- KLPP Coils are shipped from the factory attached to the induced air inlet
- Hot water coils are configured for a flanged ductwork connection; coil section is uninsulated
- Coils are not for steam applications
- Contact your Krueger Representative for high capacity or steam coil information
- Connection Tubing - $\frac{1}{2}$ " O. D. male solder
- Coil Casing - 20 gage galvanized steel
- Coil Tubing - $\frac{1}{2}$ " O. D. x 0.016" thick copper
- Coil Fins - 0.0045" thick aluminum, 10 per inch; mechanically bonded to tubing

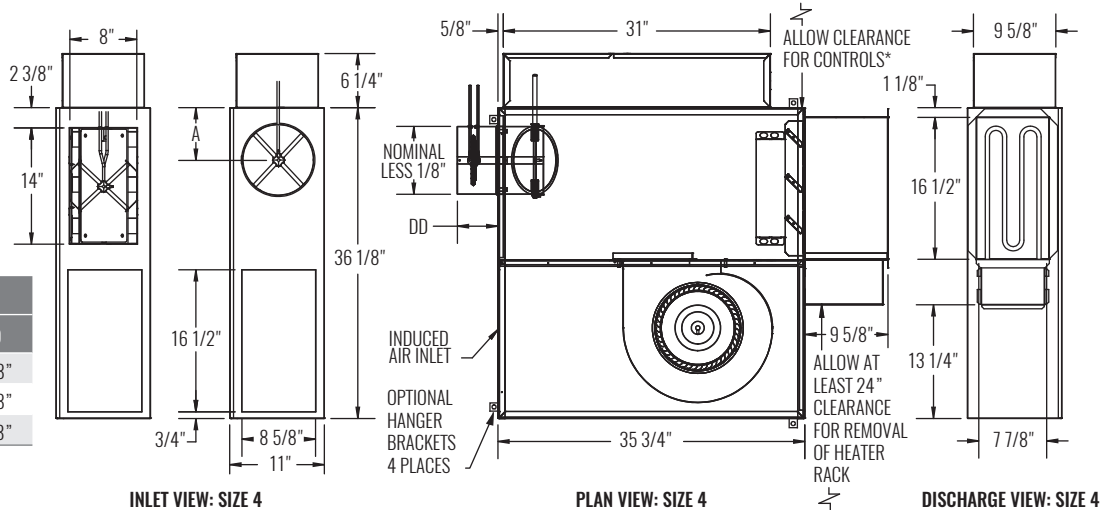
NOTE: For hot water performance data tables, visit the Krueger website at www.krueger-hvac.com or download the Krueger selection software to run customized selections. The selection program can provide performance data with different entering air and water conditions as well as show effects of altitude and glycol on the heating performance of the water coil. The selection software also allows selections to be saved in a schedule format that can be imported onto a set of project drawings.

DIMENSIONAL DATA | BASE UNIT WITH ELECTRIC HEAT

SIZE 2	
INLET SIZE	A
06"	5"
08"	6"
10"	7"



SIZE 4		
INLET SIZE	A	DD
08"	7"	4 7/8"
10"	9"	4 7/8"
12" (8"x14")	-	3 7/8"



* Check NEC for unit clearance requirements.

NOTES: Left-hand base unit with electronic control enclosure shown; right-hand is available. See next page for electric heat standard features.

STANDARD FEATURES

- 20 gage galvanized steel casing construction
- Height is 11"
- Control enclosure for electronic components
- 1/2" thick, dual density fiberglass insulation that meets NFPA 90A and UL 181 safety requirements
- [120, 208/240, or 277 volt, single-voltage, 1-phase, single speed] permanently lubricated PSC motors
- Field adjustable fan speed controller
- Removable bottom panel allows easy access to all internal components for maintenance
- Four quadrant, center averaging airflow sensor
- Flanged discharge connection on electric heat coil
- Single point electrical connection
- Includes 24 volt control transformer
- ETL listed; adherence to UL 60335-2-40 and CSA C22.2 No. 60335-2-40
- AHRI certified sound ratings

OPTIONAL FEATURES

- LineaHeat solid state electronic controlled heater with or without leaving air temperature control
- Liners: 1/2" Cellular insulation, 1/2" Foil encapsulated fiberglass insulation, Sterilwall, or Perforated doublewall
- Linear averaging airflow sensor
- [120, 208/240, or 277 volt, single-voltage] ECM motor with manual or remote adjustable speed controller
- Left-hand or right-hand control enclosure
- Induced air filter, construction type; 18"x10"x1"
- Fused or non-fused door interlocking disconnect
- Dust tight control enclosure
- Motor fusing
- Manual reset cutout
- Hanger brackets
- AC Solid State Relays
- Fuse-block

