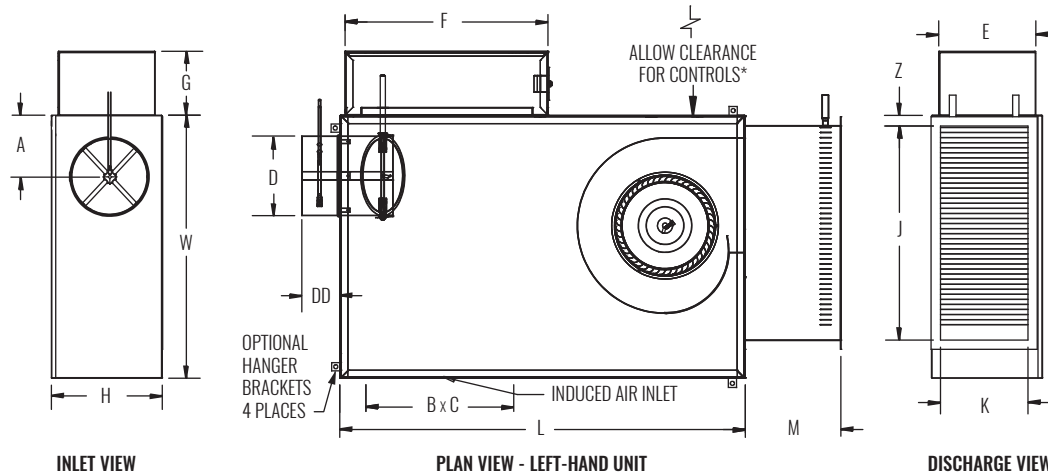


DIMENSIONAL DATA | BASE UNIT WITH HOT WATER HEAT | SIZES 1, 2, 3, 5



* Check NEC for unit clearance requirements.

UNIT SIZE	INLET SIZE	PSC MOTOR HP	ECM MOTOR HP	L	W	H	A	INDUCED AIR INLET		D	DD	CONTROL ENCLOSURE			DISCHARGE		M	Z
								B	C			E	F	G	J	K		
1	04	N/A	1/3	48"	32"	8 5/8"	5"	18"	6 3/4"	3 7/8"	6 7/8"	8 1/8"	32 1/8"	8 1/8"	20 1/2"	7 5/8"	9 1/2"	1 1/2"
	05									4 7/8"	6 7/8"							
	06									5 7/8"	4 7/8"							
	07									6 7/8"	4 7/8"							
2	06	N/A	1/3	48"	32"	9 1/2"	5"	18"	6"	5 7/8"	4 7/8"	8 1/8"	32 1/8"	8 1/8"	20 1/2"	7 5/8"	9 1/2"	1 1/2"
	08						6"		7 7/8"	4 7/8"								
3	08	1/4	1/3	40"	26"	11"	5"	14 5/8"	9"	7 7/8"	4 7/8"	9 5/8"	20"	6 1/4"	21 7/8"	8 3/4"	9 1/2"	1"
	10						6"			9 7/8"	4 7/8"							
5	08	1/2	1/2	46"	36"	17"	6"	17"	14"	7 7/8"	4 7/8"	12"	20"	6 1/4"	22"	15"	9 3/16"	2 1/4"
	10						7"			9 7/8"	4 7/8"							
	12						8"			11 7/8"	6 7/8"							
	14						10"			13 7/8"	6 7/8"							

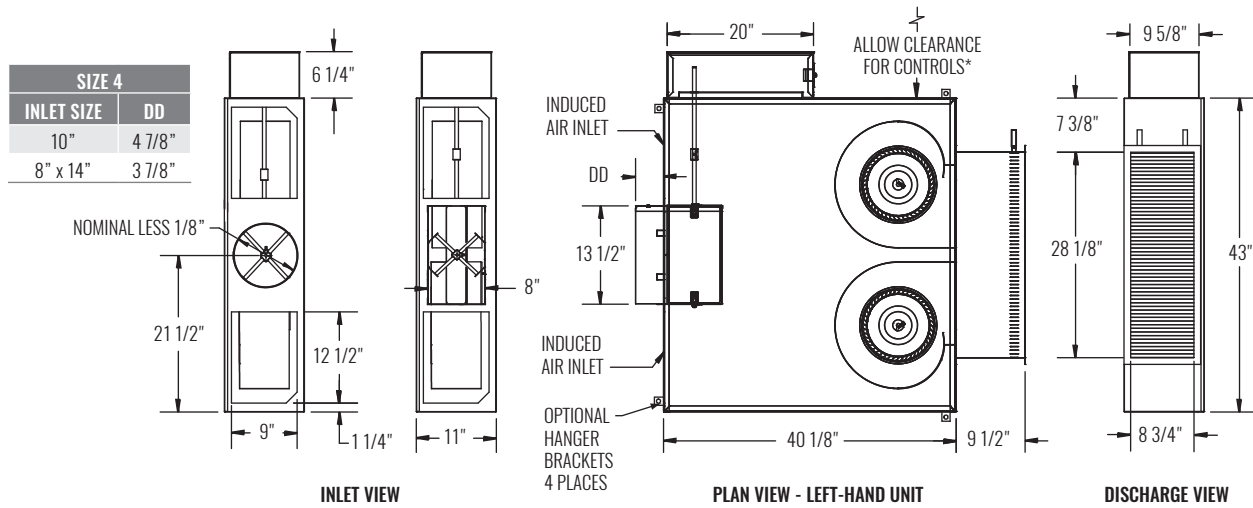
NOTE: Left-hand base unit with electronic control enclosure shown; right-hand is available.

STANDARD FEATURES

- 20 Gage galvanized steel casing construction
- Available heights for unit size 1 (8 5/8"), unit size 2 (9 1/2"), unit size 3 (11"), and unit size 5 (17").
- Control enclosure for electronic components
- 1/2" Thick, Dual density fiberglass insulation that meets NFPA 90A and UL 181 safety requirements
- [120, 208/240, or 277 volt, single-voltage, 1-phase, single-speed] permanently lubricated PSC motors (unit size 3 and 5 only)
- Field adjustable fan speed control
- Removable bottom panel allows easy access to all internal components for maintenance
- Flanged discharge connection on hot water coil
- Four quadrant center averaging airflow sensor
- Includes 24 volt control transformer
- ETL listed; adherence to UL 60335-2-40 and CSA C22.2 No. 60335-2-40
- AHRI certified sound ratings

OPTIONAL FEATURES

- Liners: 1/2" or 1" Cellular insulation, 1/2" or 1" Foil encapsulated fiberglass insulation, Sterilwall, or Perforated doublewall. *NOTE: 1" thick liner options are available on unit size 5 only.*
- Linear averaging airflow sensor
- Left-hand or right-hand hot water coil connections
- Left-hand or right-hand control enclosure
- [120, 208/240, or 277 volt, single-voltage] ECM motor with manual or remote adjustable speed controller
- Motor toggle disconnect switch
- Motor fusing
- Induced air filter, construction type; unit size 1 (18 7/8"x7 1/2"x1"), unit size 2 (19"x8 5/8"x1"), unit size 3 (17"x11"x1"), and unit size 5 (19"x16 1/2"x1")
- Dust tight control enclosure
- Hanger brackets
- Dual access panels with optional Cam locks

DIMENSIONAL DATA | BASE UNIT WITH HOT WATER HEAT | SIZE 4


* Check NEC for unit clearance requirements.

NOTE: Left-hand base unit with electronic control enclosure shown; right-hand is available.

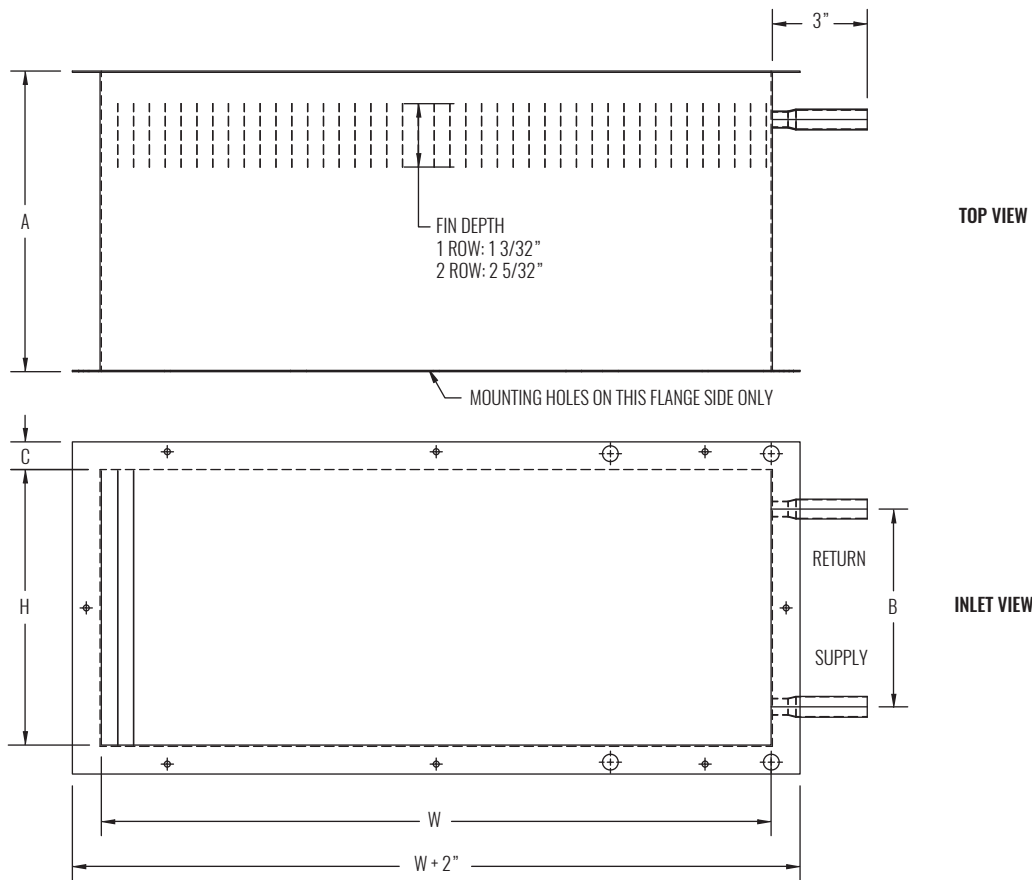
STANDARD FEATURES

- 20 Gage galvanized steel casing construction
- Height is 11"
- Control enclosure for electronic components
- 1/2" Thick, Dual density fiberglass insulation that meets NFPA 90A and UL 181 safety requirements
- [120, 208/240, or 277 volt, single-voltage, 1-phase, single-speed] permanently lubricated PSC motors
- Field adjustable fan speed control
- Removable bottom panel allows easy access to all internal components for maintenance
- Flanged discharge connection on hot water coil
- Four quadrant center averaging airflow sensor
- Includes 24 volt control transformer
- ETL listed; adherence to UL 60335-2-40 and CSA C22.2 No. 60335-2-40
- AHRI certified sound ratings

OPTIONAL FEATURES

- Liners: 1/2" Cellular insulation, 1/2" Foil encapsulated fiberglass insulation, Sterilwall, or Perforated doublewall
- Linear averaging airflow sensor
- Left-hand or right-hand hot water coil connections
- Left-hand or right-hand control enclosure
- [120, 208/240, or 277 volt, single-voltage] ECM motor with manual or remote adjustable speed controller
- Motor toggle disconnect switch
- Motor fusing
- Induced air filter, construction type (15"x11"x1"), quantity 2
- Dust tight control enclosure
- Hanger brackets
- Dual access panels with optional Cam locks

DIMENSIONAL DATA | HEATING COIL



UNIT SIZE	NUMBER OF ROWS	W	H	A	B	C
1, 2	1	20 1/2"	6 5/8"	9 1/2"	4 9/16"	1/2" *
	2					
3	1	21 1/8"	8 3/4"	9 1/2"	6 1/4"	7/8"
	2					
4	1	28 1/8"	8 3/4"	9 1/2"	6 1/4"	7/8"
	2					
5	1	22"	15"	8"	14"	1/2"
	2			9 3/16"	13 3/4"	

NOTE: For hot water performance data tables, visit the Krueger website at www.krueger-hvac.com or download the Krueger selection software to run customized selections. The selection program can provide performance data with different entering air and water conditions as well as show effects of altitude and glycol on the heating performance of the water coil. The selection software also allows selections to be saved in a schedule format that can be imported onto a set of project drawings.

NOTE: The top and bottom flange on the unit size 1 and 2 hot water coils turn inward.

STANDARD FEATURES

- KLPS coils are shipped from the factory attached to the unit discharge
- Hot water coils are configured for a flanged ductwork connection; coil section is uninsulated
- Coils are not for steam applications
- Contact your Krueger Representative for high capacity or steam coil information
- Connection Tubing: 1/2" O. D. male solder
- Coil Casing: 20 gage galvanized steel
- Coil Tubing: 1/2" O. D. x 0.016" thick copper
- Coil Fins: 0.0045" thick aluminum, 10 per inch; mechanically bonded to tubing