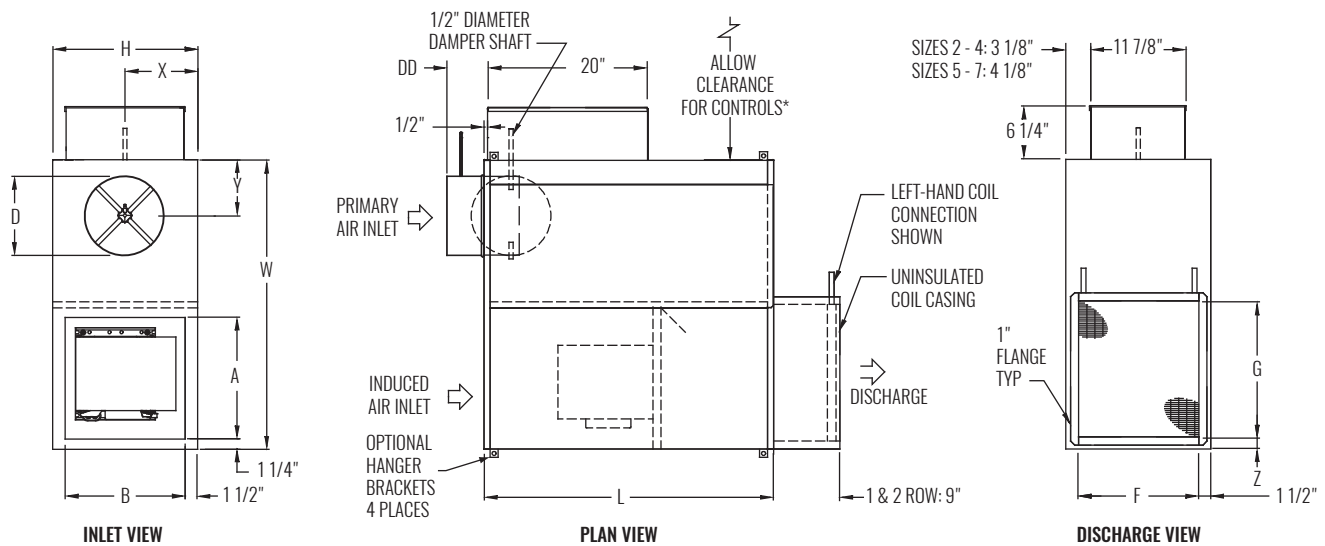


**DIMENSIONAL DATA | BASE UNIT WITH HOT WATER HEAT ON DISCHARGE**



\* Check NEC for unit clearance requirements.

| UNIT SIZE | INLET SIZE | MAX PRIMARY CFM | MAX FAN CFM |       | PSC HP | L       | W       | H        | INDUCED AIR |     |         | DISCHARGE |     |     | X       | Y  | Z |
|-----------|------------|-----------------|-------------|-------|--------|---------|---------|----------|-------------|-----|---------|-----------|-----|-----|---------|----|---|
|           |            |                 | 1 ROW       | 2 ROW |        |         |         |          | A           | B   | D       | F         | G   |     |         |    |   |
| 2         | 06         | 515             | 525         | 520   | 1/4    | 36 1/8" | 36 1/8" | 18 1/16" | 15 1/8"     | 15" | 5 7/8"  | 15 1/8"   | 17" | 9"  | 6"      | 2" |   |
| 2         | 08         | 920             | 525         | 520   | 1/4    | 36 1/8" | 36 1/8" | 18 1/16" | 15 1/8"     | 15" | 7 7/8"  | 15 1/8"   | 17" | 9"  | 6"      | 2" |   |
| 3         | 08         | 920             | 865         | 860   | 1/4    | 36 1/8" | 36 1/8" | 18 1/16" | 15 1/8"     | 15" | 7 7/8"  | 15 1/8"   | 17" | 9"  | 6"      | 2" |   |
| 3         | 10         | 1430            | 865         | 860   | 1/4    | 36 1/8" | 36 1/8" | 18 1/16" | 15 1/8"     | 15" | 9 7/8"  | 15 1/8"   | 17" | 9"  | 7"      | 2" |   |
| 4         | 10         | 1430            | 960         | 955   | 1/4    | 36 1/8" | 36 1/8" | 18 1/16" | 15 1/8"     | 15" | 9 7/8"  | 15 1/8"   | 17" | 9"  | 7"      | 2" |   |
| 4         | 12         | 2060            | 960         | 955   | 1/4    | 36 1/8" | 36 1/8" | 18 1/16" | 15 1/8"     | 15" | 11 7/8" | 15 1/8"   | 17" | 9"  | 8"      | 2" |   |
| 5         | 12         | 2060            | 1810        | 1780  | 1/2    | 42 1/8" | 46 1/8" | 20 1/16" | 20 1/8"     | 17" | 11 7/8" | 17 5/8"   | 25" | 10" | 8"      | 1" |   |
| 5         | 14         | 2800            | 1810        | 1780  | 1/2    | 42 1/8" | 46 1/8" | 20 1/16" | 20 1/8"     | 17" | 13 7/8" | 17 5/8"   | 25" | 10" | 10"     | 1" |   |
| 6         | 14         | 2800            | 1810        | 1780  | 1/2    | 42 1/8" | 46 1/8" | 20 1/16" | 20 1/8"     | 17" | 13 7/8" | 17 5/8"   | 25" | 10" | 10"     | 1" |   |
| 6         | 16         | 3660            | 1810        | 1780  | 1/2    | 42 1/8" | 46 1/8" | 20 1/16" | 20 1/8"     | 17" | 15 7/8" | 17 5/8"   | 25" | 10" | 10 1/4" | 1" |   |
| 7         | 16         | 3660            | 2050        | 1990  | 3/4    | 42 1/8" | 46 1/8" | 20 1/16" | 20 1/8"     | 17" | 15 7/8" | 17 5/8"   | 25" | 10" | 10 1/4" | 1" |   |

NOTES: Left-hand base unit with electronic control enclosure shown; right-hand is available. For a complete list of available inlet sizes, see page B2-39

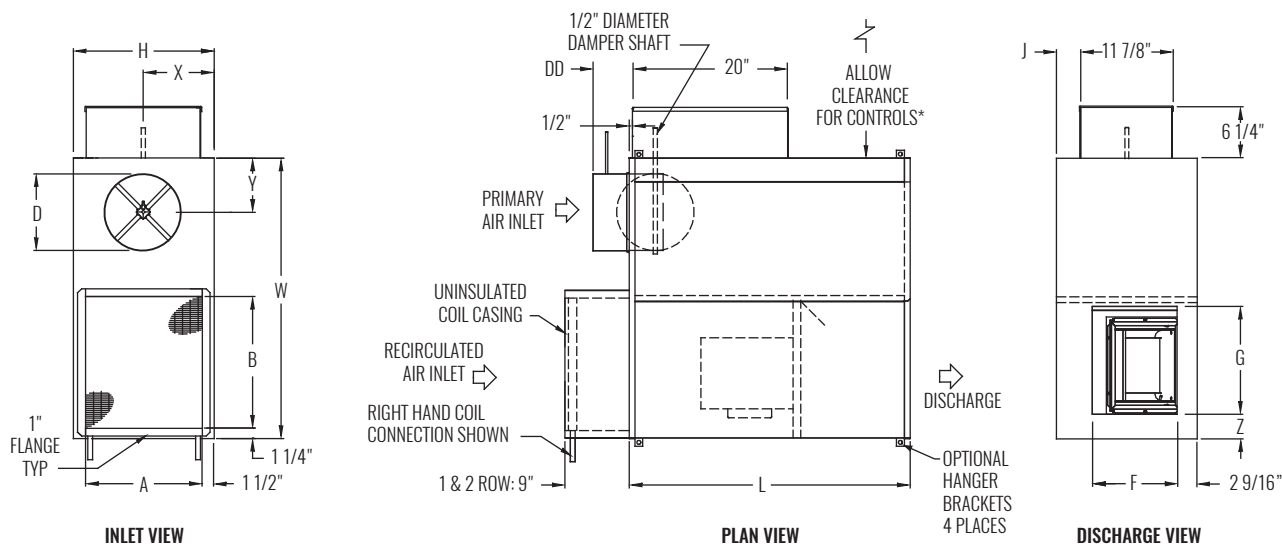
**STANDARD FEATURES**

- 20 Gage galvanized steel casing construction
- Control enclosure for electronic components
- 1/2" Thick, Dual density fiberglass insulation that meets NFPA 90A and UL 181 safety requirements
- [120, 208/240, or 277 volt, multi-voltage, 1-phase, single-speed] permanently lubricated PSC motors
- Field adjustable fan speed control
- Integral induced air attenuator
- Motor/blower isolation
- Removable bottom panel allows easy access to motor/blower assembly and primary air damper
- Four quadrant center averaging airflow sensor; inlet sizes 6 - 10 (DD = 4 7/8"); sizes 12 - 16 (DD = 6 7/8")
- Discharge requires flanged duct; connection by others
- Includes 24 volt control transformer
- Backdraft damper assembly
- ETL listed; adherence to UL 60335-2-40 and CSA C22.2 No. 60335-2-40
- AHRI certified sound ratings

**OPTIONAL FEATURES**

- Liners: 1/2" or 1" Cellular insulation, 1" Dual density fiberglass insulation, 1/2" or 1" Foil encapsulated fiberglass insulation, Sterilwall, Steriliner, Perforated doublewall, or no liner
- Linear averaging airflow sensor; inlet sizes 6 - 10 (DD = 4 7/8"), sizes 12 - 16 (DD = 6 7/8")
- [120, 208/240, or 277 volt, single-voltage] ECM motor with manual or remote adjustable speed controller (on unit sizes 4 and 7)
- Left-hand or right-hand control enclosure
- Hot water coil vent and drain
- Motor disconnect
- Induced air filter, construction type; unit sizes 2 - 4 (17"x17"x1"); unit sizes 5 - 7 (22"x19"x1")
- Hanger brackets (not available with Sterilwall or Perforated doublewall liner options)
- Dust tight control enclosure
- Motor fusing
- Cam locks (access panel)

## DIMENSIONAL DATA | BASE UNIT WITH HOT WATER HEAT ON INDUCED AIR INLET



\* Check NEC for unit clearance requirements.

| UNIT SIZE | INLET SIZE | MAX PRIMARY CFM | MAX FAN CFM |       | PSC HP | L       | W       | H        | INDUCED AIR |     |         | DISCHARGE |     | J      | X   | Y       | Z      |
|-----------|------------|-----------------|-------------|-------|--------|---------|---------|----------|-------------|-----|---------|-----------|-----|--------|-----|---------|--------|
|           |            |                 | 1 ROW       | 2 ROW |        |         |         |          | A           | B   | D       | F         | G   |        |     |         |        |
| 2         | 06         | 515             | 525         | 520   | 1/4    | 36 1/8" | 36 1/8" | 18 1/16" | 15 1/8"     | 17" | 5 7/8"  | 11"       | 14" | 3 1/8" | 9"  | 6"      | 2 5/8" |
| 2         | 08         | 920             | 525         | 520   | 1/4    | 36 1/8" | 36 1/8" | 18 1/16" | 15 1/8"     | 17" | 7 7/8"  | 11"       | 14" | 3 1/8" | 9"  | 6"      | 2 5/8" |
| 3         | 08         | 920             | 865         | 860   | 1/4    | 36 1/8" | 36 1/8" | 18 1/16" | 15 1/8"     | 17" | 7 7/8"  | 11"       | 14" | 3 1/8" | 9"  | 6"      | 2 5/8" |
| 3         | 10         | 1430            | 865         | 860   | 1/4    | 36 1/8" | 36 1/8" | 18 1/16" | 15 1/8"     | 17" | 9 7/8"  | 11"       | 14" | 3 1/8" | 9"  | 7"      | 2 5/8" |
| 4         | 10         | 1430            | 960         | 955   | 1/4    | 36 1/8" | 36 1/8" | 18 1/16" | 15 1/8"     | 17" | 9 7/8"  | 11"       | 14" | 3 1/8" | 9"  | 7"      | 2 5/8" |
| 4         | 12         | 2060            | 960         | 955   | 1/4    | 36 1/8" | 36 1/8" | 18 1/16" | 15 1/8"     | 17" | 11 7/8" | 11"       | 14" | 3 1/8" | 9"  | 8"      | 2 5/8" |
| 5         | 12         | 2060            | 1810        | 1780  | 1/2    | 42 1/8" | 46 1/8" | 20 1/16" | 17 1/8"     | 25" | 11 7/8" | 15"       | 17" | 4 1/8" | 10" | 8"      | 4 7/8" |
| 5         | 14         | 2800            | 1810        | 1780  | 1/2    | 42 1/8" | 46 1/8" | 20 1/16" | 17 1/8"     | 25" | 13 7/8" | 15"       | 17" | 4 1/8" | 10" | 10"     | 4 7/8" |
| 6         | 14         | 2800            | 1810        | 1780  | 1/2    | 42 1/8" | 46 1/8" | 20 1/16" | 17 1/8"     | 25" | 13 7/8" | 15"       | 17" | 4 1/8" | 10" | 10"     | 4 7/8" |
| 6         | 16         | 3660            | 1810        | 1780  | 1/2    | 42 1/8" | 46 1/8" | 20 1/16" | 17 1/8"     | 25" | 15 7/8" | 15"       | 17" | 4 1/8" | 10" | 10 1/4" | 4 7/8" |
| 7         | 16         | 3660            | 2050        | 1990  | 3/4    | 42 1/8" | 46 1/8" | 20 1/16" | 17 1/8"     | 25" | 15 7/8" | 15"       | 17" | 4 1/8" | 10" | 10 1/4" | 4 7/8" |

NOTES: Left-hand base unit with electronic control enclosure shown; right-hand is available. For a complete list of available inlet sizes, see page B2-39.

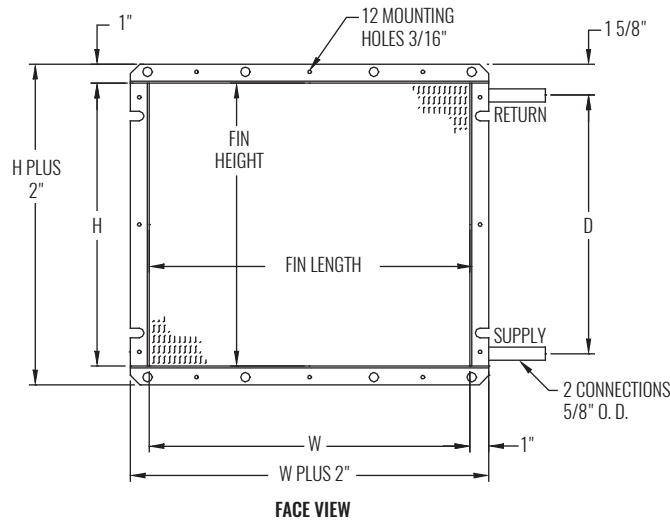
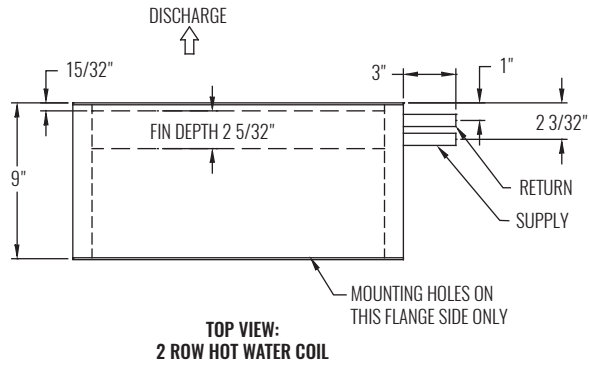
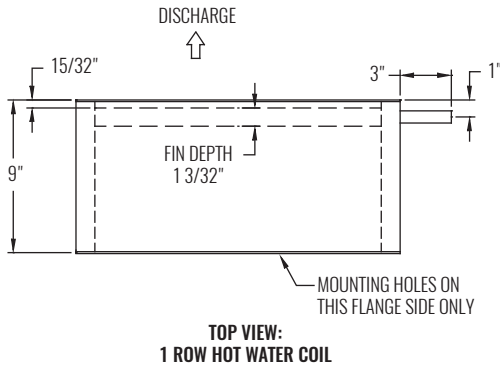
### STANDARD FEATURES

- 20 Gage galvanized steel casing construction
- Control enclosure for electronic components
- 1/2" Thick, Dual density fiberglass insulation that meets NFPA 90A and UL 181 safety requirements
- [120, 208/240, or 277 volt, multi-voltage, 1-phase, single-speed] permanently lubricated PSC motors
- Field adjustable fan speed control
- Integral induced air attenuator
- Motor/blower isolation
- Removable bottom panel allows easy access to motor/blower assembly and primary air damper
- Four quadrant center averaging airflow sensor; inlet sizes 6 - 10 (DD = 4 7/8"); sizes 12 - 16 (DD = 6 7/8")
- Discharge requires flanged duct; connection by others
- Includes 24 volt control transformer
- Backdraft damper assembly
- ETL listed; adherence to UL 60335-2-40 and CSA C22.2 No. 60335-2-40
- AHRI certified sound ratings

### OPTIONAL FEATURES

- Liners: 1/2" or 1" Cellular insulation, 1" Dual density fiberglass insulation, 1/2" or 1" Foil encapsulated fiberglass insulation, Sterilwall, Steriliner, Perforated doublewall, or no liner
- Linear averaging airflow sensor; inlet sizes 6 - 10 (DD = 4 7/8"), sizes 12 - 16 (DD = 6 7/8")
- [120, 208/240, or 277 volt, single-voltage] ECM motor with manual or remote adjustable speed controller (on unit sizes 4 and 7).
- Left-hand or right-hand control enclosure
- Hot water coil vent and drain
- Heater disconnect, fused or not fused
- Hanger brackets (not available with Sterilwall or Perforated doublewall liner options)
- Induced air filter, construction type; unit sizes 2 - 4 (19"x17"x1"); unit sizes 5 - 7 (27"x20"x1")
- Cam locks (access panel) • Motor fusing
- Dust tight control enclosure • Motor disconnect

**DIMENSIONAL DATA | HOT WATER COILS**



| UNIT SIZE | W   | H       | D       |
|-----------|-----|---------|---------|
| 2         | 17" | 15 1/8" | 13 3/4" |
| 3         |     |         |         |
| 4         |     |         |         |
| 5         | 25" | 17 5/8" | 16 1/4" |
| 6         |     |         |         |
| 7         |     |         |         |

NOTE: For hot water performance data tables, visit the Krueger website at [www.krueger-hvac.com](http://www.krueger-hvac.com) or download the Krueger selection software to run customized selections. The selection program can provide performance data with different entering air and water conditions as well as show effects of altitude and glycol on the heating performance of the water coil. The selection software also allows selections to be saved in a schedule format that can be imported onto a set of project drawings.

**STANDARD FEATURES**

- KQFP Coils are shipped from the factory attached to the unit discharge or induced air inlet
- Hot water coils are configured for a flanged ductwork connection. Coil section is uninsulated
- Coils are not for steam applications
- Contact your Krueger Representative for high capacity or steam coil information
- Connection Tubing - 5/8" O. D. male solder
- Coil Casing - 20 gage galvanized steel
- Coil Tubing - 1/2" O. D. x 0.016" thick copper
- Coil Fins - 0.0045" thick aluminum, 10 per inch; mechanically bonded to tubing
- Optional vent and drain