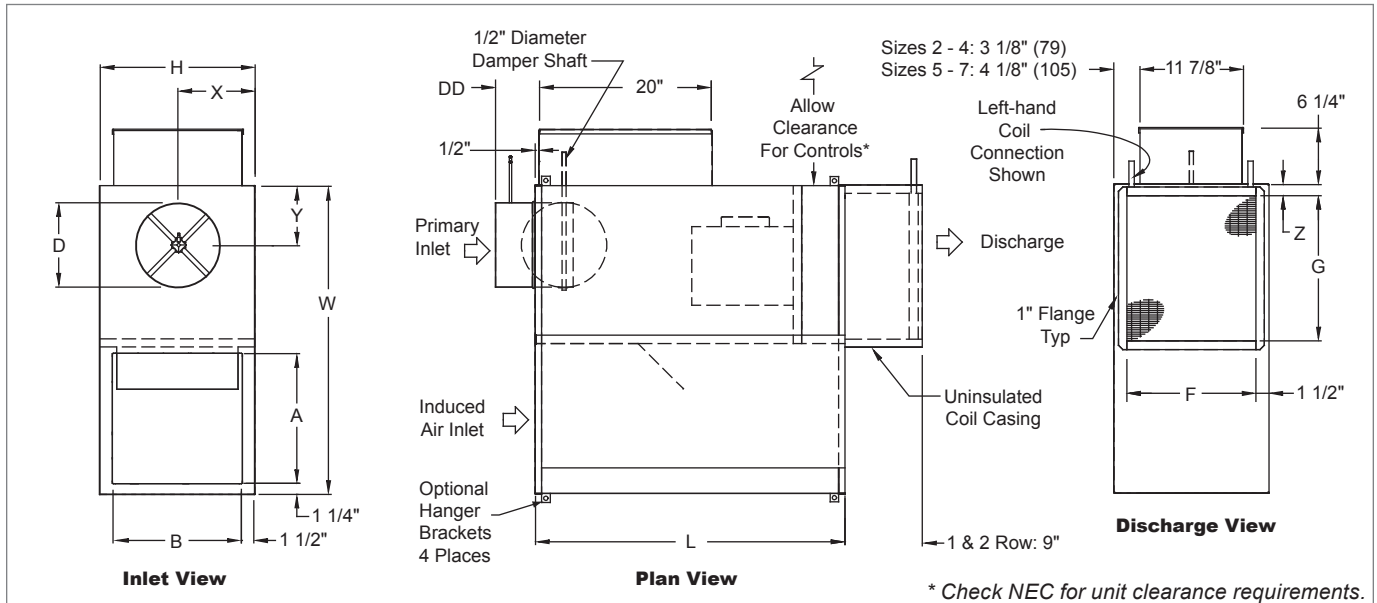


## KQFS Unit with Hot Water Heat Dimensional Information

### KQFS UNIT WITH HOT WATER HEAT, INLET, PLAN, AND DISCHARGE VIEWS



### KQFS UNIT WITH HOT WATER HEAT, DIMENSIONAL DETAILS

Unit Size	Inlet Size	Max. Primary CFM	Max. Fan CFM		Inlet Size	L	W	H	Induced Air		D	Discharge		X	Y	Z
			1 Row	2 Row					A	B		F	G			
2	06	505	515	505	06	39 1/2"	36 1/8"	18 1/16"	15 1/8"	15"	5 7/8"	15 1/8"	17"	9"	6"	2"
2	08	505	515	505	08	39 1/2"	36 1/8"	18 1/16"	15 1/8"	15"	7 7/8"	15 1/8"	17"	9"	6"	2"
3	08	920	1045	1025	08	39 1/2"	36 1/8"	18 1/16"	15 1/8"	15"	7 7/8"	15 1/8"	17"	9"	6"	2"
3	10	1025	1045	1025	10	39 1/2"	36 1/8"	18 1/16"	15 1/8"	15"	9 7/8"	15 1/8"	17"	9"	7"	2"
4	10	1245	1275	1245	10	42 1/8"	46 1/8"	20 1/16"	20 1/8"	17"	9 7/8"	15 1/8"	17"	10"	7"	3 3/16"
4	12	1245	1275	1245	12	42 1/8"	46 1/8"	20 1/16"	20 1/8"	17"	11 7/8"	15 1/8"	17"	10"	8"	3 3/16"
5	12	1740	1775	1740	12	42 1/8"	46 1/8"	20 1/16"	20 1/8"	17"	11 7/8"	17 5/8"	25"	10"	8"	1"
5	14	1740	1775	1740	14	42 1/8"	46 1/8"	20 1/16"	20 1/8"	17"	13 7/8"	17 5/8"	25"	10"	10"	1"
6	14	2425	2475	2425	14	42 1/8"	46 1/8"	20 1/16"	20 1/8"	17"	13 7/8"	17 5/8"	25"	10"	10"	1"
6	16	2425	2475	2425	16	42 1/8"	46 1/8"	20 1/16"	20 1/8"	17"	15 7/8"	17 5/8"	25"	10"	10 1/4"	1"
7	16	2765	2855	2765	16	42 1/8"	46 1/8"	20 1/16"	20 1/8"	17"	15 7/8"	17 5/8"	25"	10"	10 1/4"	1"

NOTES: Left-hand base unit with electronic control enclosure shown; right-hand is available. For a complete list of available inlet sizes, see page B2-7.

## KQFS Unit with Hot Water Heat Features & Options

### STANDARD FEATURES

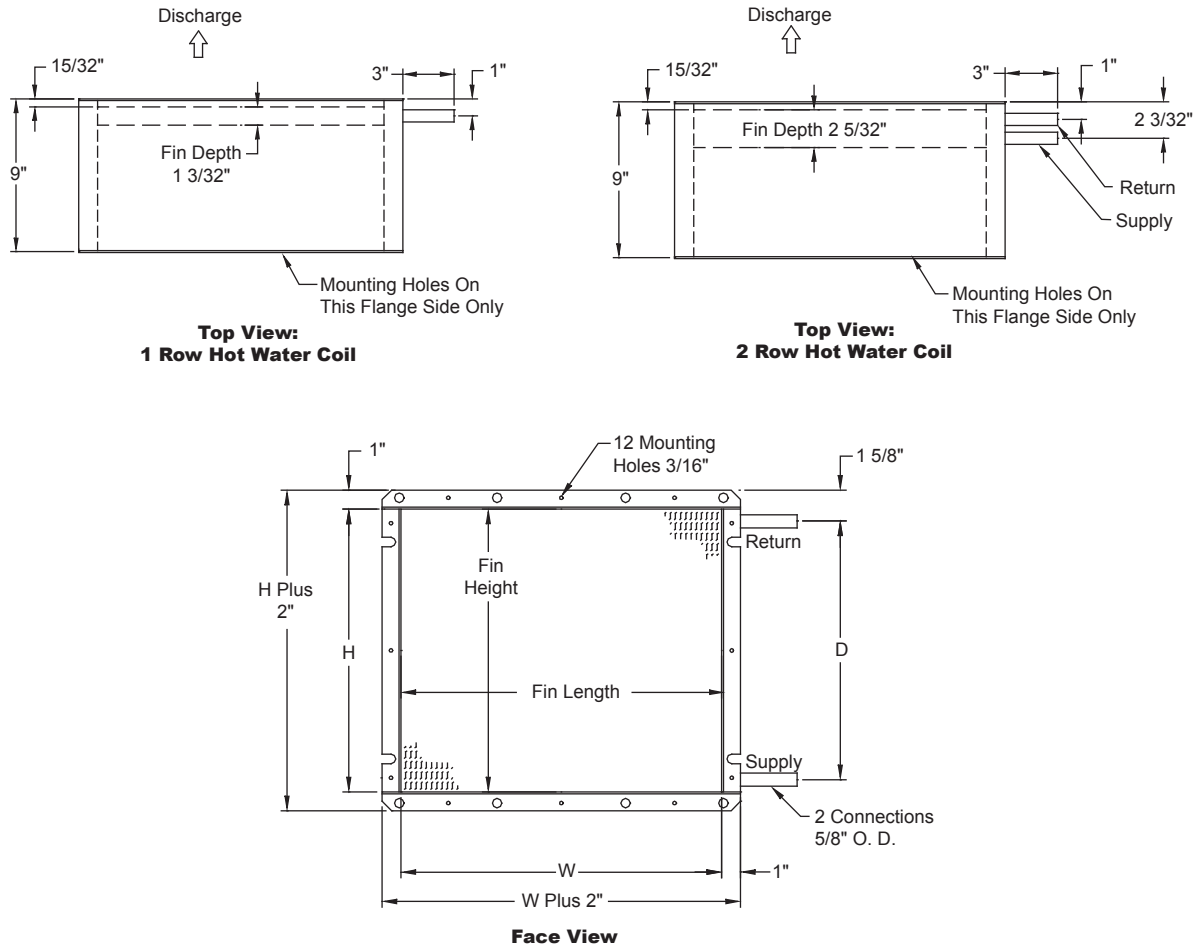
- 20 Gage galvanized steel casing construction.
- Control enclosure for electronic components.
- 1/2" Thick, Dual density fiberglass insulation that meets NFPA 90A and UL 181 safety requirements.
- Unit sizes 2 to 6 include [120, 208/240, or 277 volt, multi-voltage, single-phase, single-speed] permanently lubricated PSC motors. Unit size 7 includes [208/240 or 277 volt, single-phase, single-speed] permanently lubricated PSC motors.
- Field adjustable fan speed control.
- Integral induced air attenuator. • Motor/blower isolation.
- Removable bottom panel allows easy access to motor/blower assembly and primary air damper.
- Four quadrant center averaging airflow sensor; inlet sizes 6 - 10 (DD = 4 7/8"); sizes 12 - 16 (DD = 6 7/8").
- Discharge requires flanged duct; connection by others.
- Includes 24 volt control transformer.
- ETL listed; adherence to UL 1995 and CSA C22.2 No. 236.95
- AHRI certified sound ratings.

### OPTIONAL FEATURES

- Liners: 1/2" or 1" Cellular insulation, 1" Dual density fiberglass insulation, 1/2" or 1" Foil encapsulated fiberglass insulation, Sterilwall, Steriliner, Perforated doublewall, or no liner.
- Linear averaging airflow sensor; inlet sizes 6 - 10 (DD = 4 7/8"), sizes 12 - 16 (DD = 6 7/8").
- [120, 208/240, or 277 volt, single-voltage] ECM motor with manual or remote adjustable speed controller (on unit sizes 3, 6, and 7).
- Left-hand or right-hand control enclosure.
- Hot water coil vent and drain.
- Motor fusing.
- Motor disconnect.
- Dust tight control enclosure.
- Induced air filter, construction type; unit sizes 2 - 3 (17"x17"x1"); unit sizes 4 - 7 (22"x19"x1").
- Cam locks (access panel).
- Hanger brackets (not available with sterilwall or perforated doublewall liner options).

## KQFS Hot Water Coil Dimensional Information

### KQFS HOT WATER COIL, TOP AND FACE VIEWS



### KQFS HOT WATER COIL, DIMENSIONAL DETAILS

Unit Size	W	H	D
2	17"	15 1/8"	13 3/4"
3			
4			
5	25"	17 5/8"	16 1/4"
6			
7			

### NOTE:

For hot water performance data tables, visit the Krueger website at [www.krueger-hvac.com](http://www.krueger-hvac.com) or download the Krueger selection software to run customized selections. The selection program can provide performance data with different entering air and water conditions as well as show effects of altitude and glycol on the heating performance of the water coil. The selection software also allows selections to be saved in a schedule format that can be imported onto a set of project drawings.

### KQFS Hot Water Coil Features & Options

#### STANDARD FEATURES

- KQFS Coils are shipped from the factory attached to the unit discharge.
- Hot water coils are configured for a flanged ductwork connection. Coil section is uninsulated.
- Coils are not for steam applications.
- Contact your Krueger Representative for high capacity or steam coil information.
- Connection Tubing - 5/8" O. D. male solder.
- Coil Casing - 20 gage galvanized steel.
- Coil Tubing - 1/2" O. D. x 0.016" thick copper.
- Coil Fins - 0.0045" thick aluminum, 10 per inch; mechanically bonded to tubing.
- Vent and drain option available.