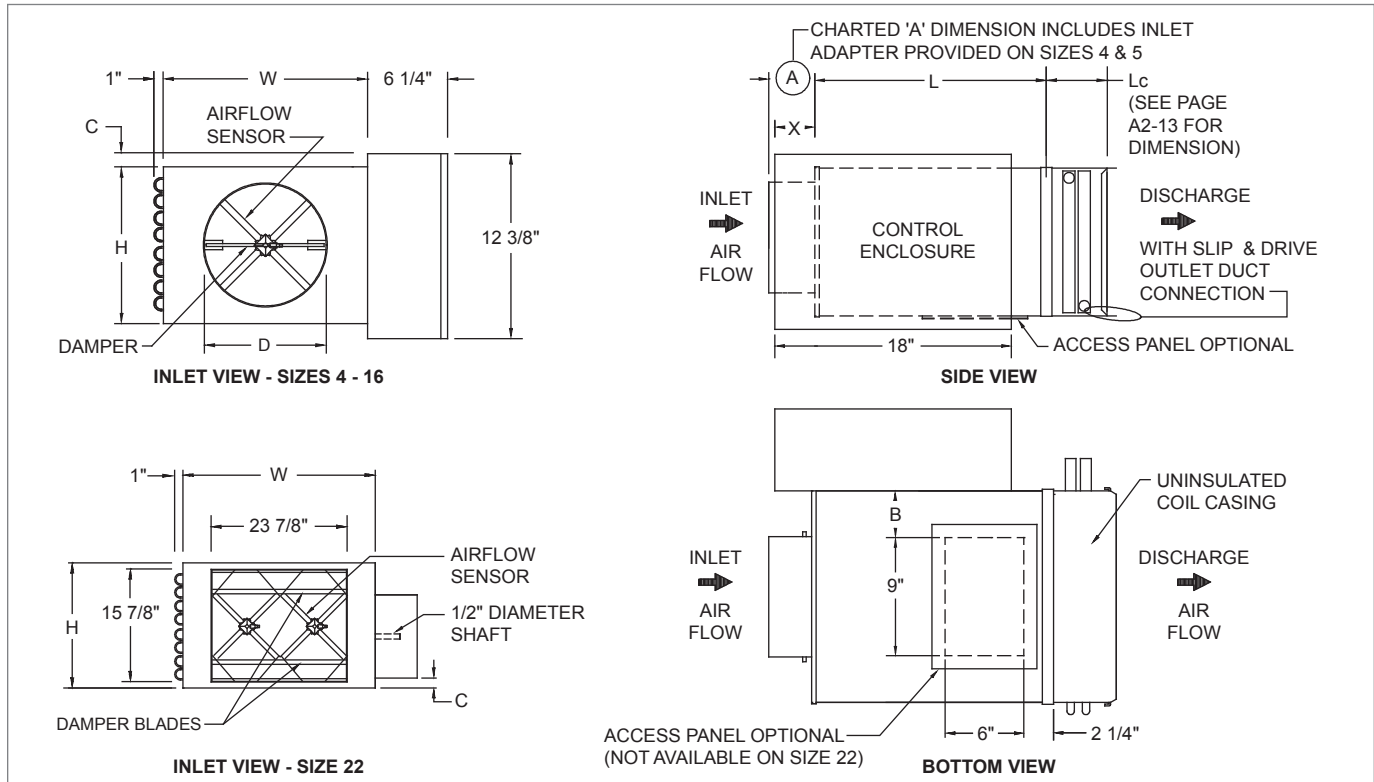


LMHS

LMHS Unit with Hot Water Heat Dimensional Information

LMHS UNIT WITH HOT WATER HEAT, INLET, SIDE, & BOTTOM VIEWS



LMHS UNIT WITH HOT WATER HEAT, DIMENSIONAL DETAILS

Inlet Size	Max. CFM [L/s]	L	W	H	A	B	C	D	X
4	230 [109]	15 1/2"	12"	8"	5 3/8"	1 1/2"	2 1/8"	3 7/8"	7 1/4"
5	360 [170]	15 1/2"	12"	8"	5 3/8"	1 1/2"	2 1/8"	4 7/8"	7 1/4"
6	515 [243]	15 1/2"	12"	8"	3 3/8"	1 1/2"	2 1/8"	5 7/8"	7 1/4"
7	700 [330]	15 1/2"	12"	10"	3 3/8"	1 1/2"	1 1/8"	6 7/8"	7 1/4"
8	920 [434]	15 1/2"	12"	10"	3 3/8"	1 1/2"	1 1/8"	7 7/8"	7 1/4"
9	1160 [547]	15 1/2"	14"	12 1/2"	3 3/8"	2 1/2"	-	8 7/8"	5 1/4"
10	1430 [675]	15 1/2"	14"	12 1/2"	3 3/8"	2 1/2"	-	9 7/8"	5 1/4"
12	2060 [972]	15 1/2"	16"	15"	3 3/8"	3 1/2"	-	11 7/8"	5 1/4"
14	2800 [1321]	15 1/2"	20"	17 1/2"	3 3/8"	5 1/2"	-	13 7/8"	3 1/4"
16	3660 [1727]	15 1/2"	24"	18"	3 3/8"	7 1/2"	-	15 7/8"	3 1/4"
22	7000 [3304]	15"	38"	18"	4 1/4"	14 1/2"	1 1/8"	23 7/8" x 15 7/8"	5 1/4"

NOTES: Right-hand base unit with electronic control enclosure shown; left-hand is available.

LMHS Unit with Hot Water Heat Features & Options

STANDARD FEATURES

- 22 Gage galvanized steel casing construction.
- NEMA 2 steel control enclosure for electric or electronic components.
- 1/2" Thick dual density fiberglass insulation that meets NFPA 90A and UL 181 safety requirements.
- Four quadrant center averaging airflow sensor.
- Hot water coils.
- Variety of pneumatic, analog, and factory mounted direct digital control packages for pressure dependent and pressure independent systems.
- ETL Listed - Adherence to UL 429 for electrically operated valves.

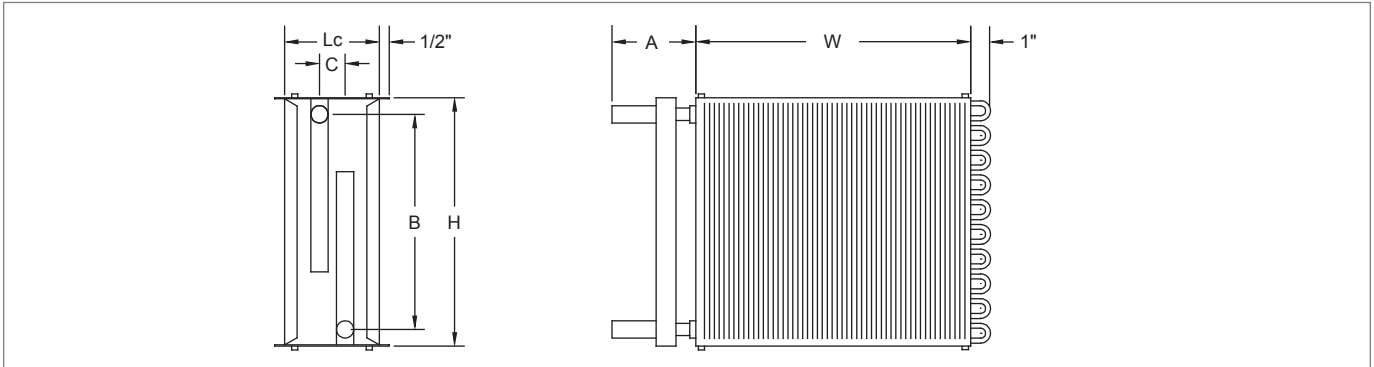
OPTIONAL FEATURES

- 20 Gage galvanized steel casing construction.
- Liners: 1/2" or 1" Cellular Insulation, 1" Dual Density Fiberglass Insulation, Sterilwall, Steriliner, Perforated Doublewall, or no liner.
- Linear averaging airflow sensor.
- 24 Volt transformer.
- Disconnect switch for electronic controls.
- Dust tight control enclosure.
- Left-hand or right-hand control enclosure.
- Left-hand or right-hand water coil connection.
- Bottom access panel.
- Hanger brackets.
- Cam locks.
- Vent and drain water coils.

SINGLE DUCT TERMINAL UNITS

LMHS

© KRUEGER 2012

LMHS Hot Water Coil Dimensional Information
LMHS HOT WATER COIL, SIDE & FACE VIEWS

LMHS HOT WATER COIL, DIMENSIONAL DETAILS

LMHS Size	Number of Coils	H	W	Lc	A	B	C	Water Connection*
4, 5, 6	1 Row	8"	12"	5"	3"	6 1/4"	-	1/2"
	2 Row	8"	12"	5"	4 1/4"	6 7/8"	1 1/8"	7/8"
	3 Row	8"	12"	7 1/4"	4 1/4"	6 7/8"	2 1/8"	7/8"
	4 Row	8"	12"	7 1/4"	4 1/4"	6 7/8"	3 1/4"	7/8"
7, 8	1 Row	10"	12"	5"	3"	8 3/4"	-	1/2"
	2 Row	10"	12"	5"	4 1/4"	9"	1 1/8"	7/8"
	3 Row	10"	12"	7 1/4"	4 1/4"	9"	2 1/8"	7/8"
	4 Row	10"	12"	7 1/4"	4 1/4"	9"	3 1/4"	7/8"
9, 10	1 Row	12 1/2"	14"	5"	4 1/4"	10 7/8"	1 1/4"	7/8"
	2 Row	12 1/2"	14"	5"	4 1/4"	11 1/2"	1 1/8"	7/8"
	3 Row	12 1/2"	14"	7 1/4"	4 1/4"	10 1/4"	2 1/8"	7/8"
	4 Row	12 1/2"	14"	7 1/4"	4 1/4"	10 1/4"	3 1/4"	7/8"
12	1 Row	15"	16"	5"	4 1/4"	13 3/4"	1 1/4"	7/8"
	2 Row	15"	16"	5"	4 1/4"	13 3/4"	1 1/8"	7/8"
	3 Row	15"	16"	7 1/4"	4 1/4"	14"	2 5/8"	7/8"
	4 Row	15"	16"	7 1/4"	4 1/4"	14"	3 1/4"	7/8"
14	1 Row	17 1/2"	20"	7 1/2"	4 1/4"	15 7/8"	1 1/4"	7/8"
	2 Row	17 1/2"	20"	7 1/2"	4 1/4"	16 1/2"	1 1/8"	7/8"
	3 Row	17 1/2"	20"	9 3/4"	4 1/4"	14"	2 1/8"	7/8"
	4 Row	17 1/2"	20"	9 3/4"	4 1/4"	14"	3 1/4"	7/8"
16	1 Row	18"	24"	7 1/2"	4 1/4"	15 7/8"	1 1/4"	7/8"
	2 Row	18"	24"	7 1/2"	4 1/4"	16 1/2"	1 1/8"	7/8"
	3 Row	18"	24"	9 3/4"	4 1/4"	14"	2 1/8"	7/8"
	4 Row	18"	24"	9 3/4"	4 1/4"	14"	3 1/4"	7/8"
20	1 Row	10 1/4"	15 7/8"	5"	3"	8 3/4"	-	7/8"
	2 Row	10 1/4"	15 7/8"	5"	4 1/4"	9"	1 1/16"	7/8"
	3 Row	10 1/4"	15 7/8"	5"	4 1/4"	9"	2 3/16"	7/8"
	4 Row	10 1/4"	15 7/8"	5"	4 1/4"	9"	3 1/4"	7/8"
22	1 Row	18"	38"	5"	3 5/8"	15 7/8"	1 5/16"	7/8"
	2 Row	18"	38"	5"	3 5/8"	16 1/2"	1 3/32"	7/8"
	3 Row	18"	38"	7 1/4"	3 5/8"	14"	2 5/32"	7/8"
	4 Row	18"	38"	7 1/4"	3 5/8"	14"	3 1/4"	7/8"

*NOTES: Water connection dimension is O.D.

LMHS Hot Water Coil Features & Options
STANDARD FEATURES

- LMHS coils are shipped from the factory attached to the unit discharge. Coil discharge is configured for slip and drive field duct work installation. Coil section is uninsulated.
- Coils are not for steam applications.
- Contact your Krueger Representative for high capacity or steam coil information.
- Connection Tubing – 0.032" Thick copper, male solder connection. Refer to connection diameter shown in the table above.
- Coil Casing – 20 Gage Galvanized Steel
- Coil Tubing – 1/2" O. D. x 0.016" Thick Copper
- Coil Fins – 0.0045" Thick aluminum, 10 per inch, mechanically bonded to tubing.
- Coil Accessories: Optional air vent and drain.

LMHS Hot Water Coil Engineering Data**NOTE:**

For hot water performance data tables, visit the Krueger website at www.krueger-hvac.com or download the Krueger selection software to run customized selections. The selection program can provide performance data with different entering air and water conditions as well as show effects of altitude and glycol on the heating performance of the water coil. The selection software also allows selections to be saved in a schedule format that can be imported onto a set of project drawings.

GLOSSARY OF ABBREVIATIONS

- EAT - Entering Air Temperature (°F)
- EWT - Entering Water Temperature (°F)
- CFM - Cubic Feet/Minute (Air Volume)
- Btuh - Heating Capacity (British Thermal Units/hr)
- MBH - 1,000 Btuh
- WTD - Water Temperature Drop (°F)
- ATR - Air Temperature Rise (°F)
- LAT - Leaving Air Temperature (°F)
- kW - Heating Capacity (kilowatts)
- Ps - Static Pressure Drop ("WG)
- GPM - Gallon Per Minute
- WPD - Water Pressure Drop or Head Loss (ft WG)