

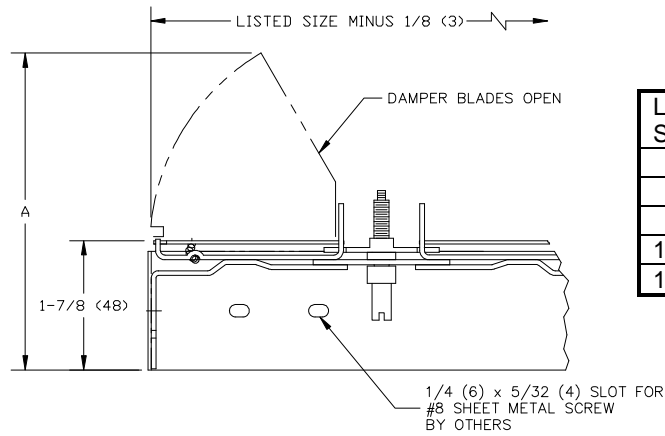
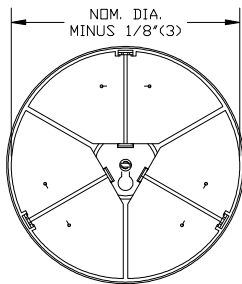
JOB NAME \_\_\_\_\_  
 ARCHITECT \_\_\_\_\_  
 ENGINEER \_\_\_\_\_  
 CONTRACTOR \_\_\_\_\_  
 LOCATION \_\_\_\_\_

**SUBMITTAL SHEET**  
 Form Number DS1010 Effective Date 2/97  
 new



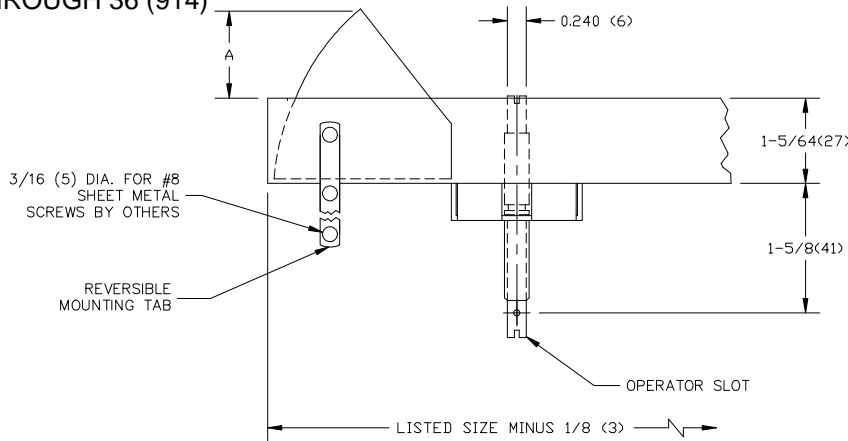
## PRD10 SERIES Damper for Round Neck Diffusers

SIZES 6 (152)  
 THROUGH 12 (305)



LISTED SIZE	A
6 (152)	4-1/4 (108)
7 (178)	4-11/16 (119)
8 (203)	5-1/8 (130)
10 (254)	6 (152)
12 (305)	6-7/8 (175)

SIZES 14 (356)  
 THROUGH 36 (914)



LISTED SIZE	A
14 (356)	4-1/4 (108)
15 (381)	4-11/16 (119)
16 (406)	5-1/8 (130)
18 (457)	6 (152)
20 (508)	6-7/8 (175)
24 (610)	4-13/16 (122)
30 (762)	6-1/16 (154)
36 (914)	7-9/16 (192)

**NOTES:**

1. The Krueger PRD 10 is a duct mounted opposed blade damper used in round duct applications.
2. Gang operated blades (3 sets on sizes 6"-12" (152)-(305), 4 sets on sizes 14"-20" (356)-(508), 6 sets on sizes 24"-36" (610)-(914) distribute air evenly through the diffuser or duct. Not recommended for flexible duct applications.
3. Adjustable by screwdriver at the operator slot.
4. shipped loose for field installation
5. Steel construction.
6. Dimensions are in inches.
7. Dimensions in parenthesis are in mm.
8. Standard finish: 6"-12" Galvanized; 14"-36" Black Enamel.

Product Information is Subject to Change Without Notice