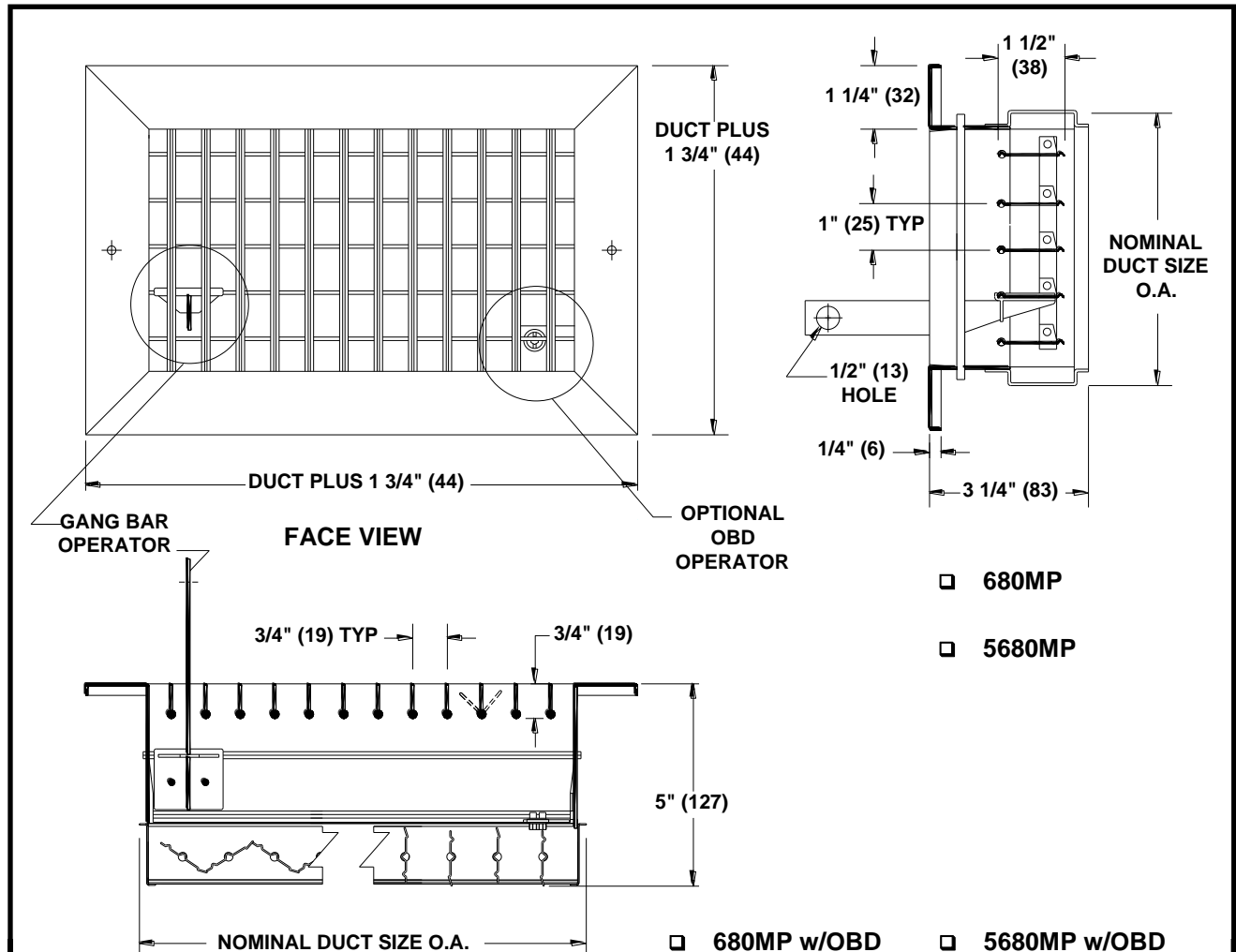


JOB NAME _____
 ARCHITECT _____
 ENGINEER _____
 CONTRACTOR _____
 LOCATION _____

SUBMITTAL SHEET
 Form Number GS0050.3 Effective Date 5/13
 Replaces Form GS0050.2



680MP, 5680MP SERIES INDUSTRIAL MULTI DIRECTIONAL POLE OPERATED SUPPLY GRILLE



NOTES :

1. **680MP** SERIES IS STEEL CONSTRUCTION WITH INDIVIDUALLY ADJUSTABLE ALUMINUM FRONT BLADES
2. **5680MP** SERIES IS ALUMINUM CONSTRUCTION WITH INDIVIDUALLY ADJUSTABLE ALUMINUM FRONT BLADES
3. MAXIMUM SINGLE UNIT SIZE IS 40"x36" (1016x914). WHEN GANG OPERATED MULTILOUVER SIZE EXCEEDS 24" (610) TWO POLE OPERATORS ARE REQUIRED

**DIMENSIONS ARE GIVEN AS
 INCHES (MM)**

OPTIONS :

- ☐ **OBD** – STEEL OPPOSED BLADE DAMPER
- ☐ **POBD** – PAINTED STEEL OPPOSED BLADE DAMPER
- ☐ **SOBD** – ALUMINUM OPPOSED BLADE DAMPER