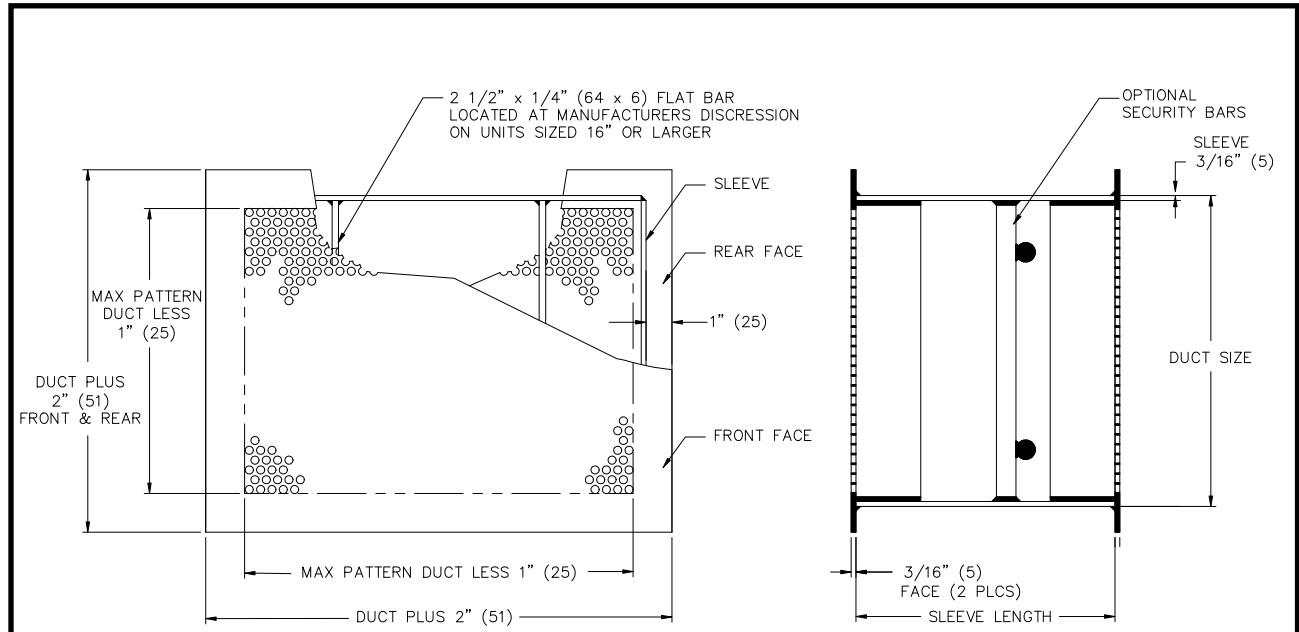


JOB NAME _____
 ARCHITECT _____
 ENGINEER _____
 CONTRACTOR _____
 LOCATION _____

SUBMITTALSHEET
 Form Number SG7026.3 Effective Date 10/12
 SG7026.2



1310TF Security Series Steel Transfer Grille



FACE VIEW

CROSS SECTION

STANDARD FEATURES :

1. **FACE PLATES :** 3/16" (5) steel with 5/16" (8) round holes on 7/16" (11) staggered centers.
2. **SLEEVE :** 3/16" (5) stitch welded.
3. All welded construction.
4. **FINISH :** 44 British white.
5. **SIZES :** available in 2" (51) increments only.*

DUCT MIN 6" (152) x 4" (102)
 MAX 30" (762) x 30" (762)
 *only odd size available is 9" x 9" (229 x 229)

6. **SLEEVE LENGTH :** Available in the following lengths only.

6" (152)	8" (203)	10" (254)
12" (305)	14" (356)	16" (406)
18" (457)		

OPTIONS :

see FORM SG7050 and SG7051 for dimensional details

- 3/4" (19) dia. **SECURITY BAR** grid is tack welded twice at each intersection and welded completely around at the sleeve joint.
- ANCHOR BARS** 3/4" (19) dia. x 3" (76) long are welded around at the sleeve joint. (not shown here – see FORM SG7050)

RECOMMENDED OPENING = DUCT SIZE + 1/2"

DIMENSIONS ARE GIVEN AS INCHES (MM).