

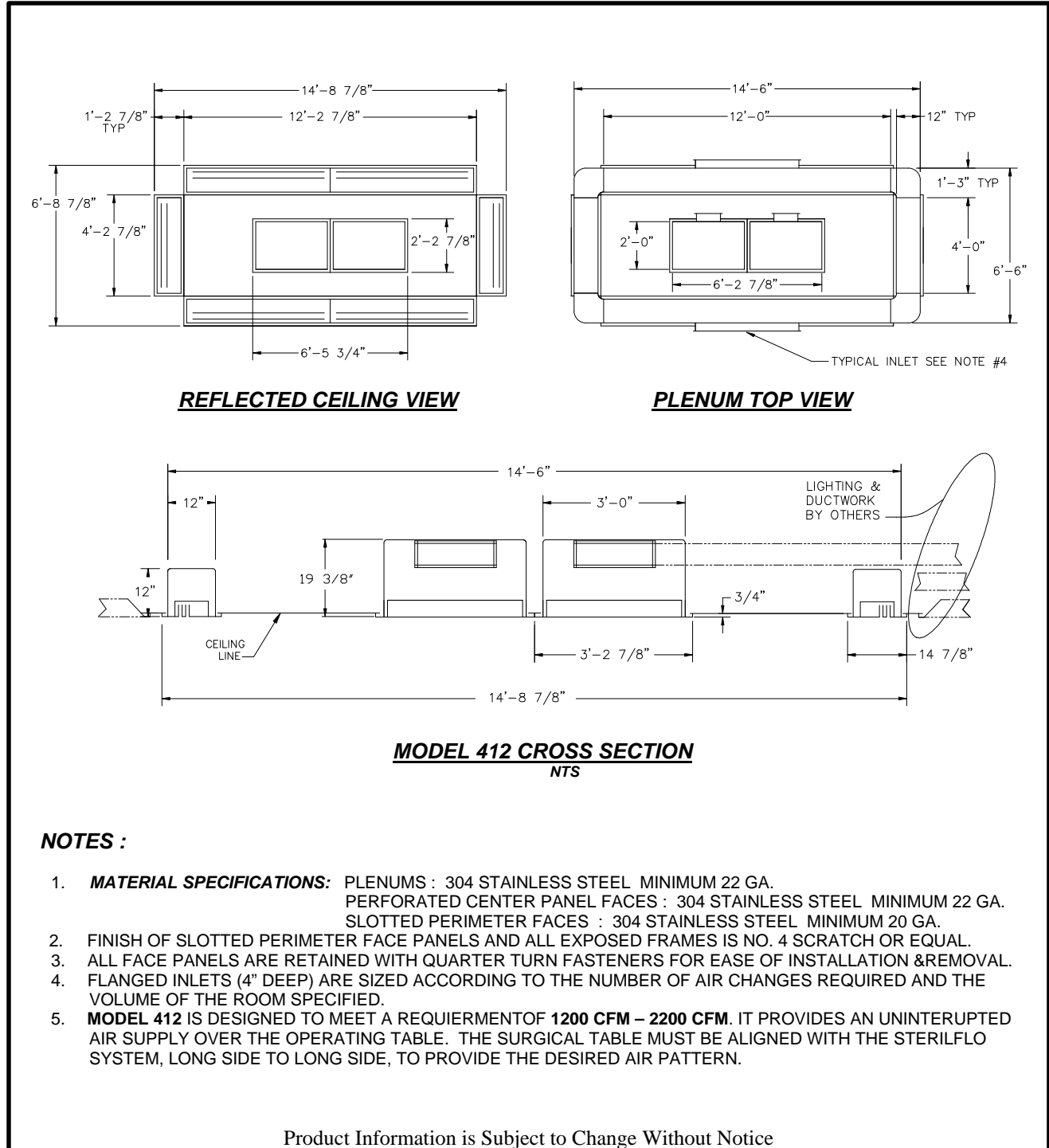
SUBMITTALSHEET

Form Number SS0003 Effective Date 11/97
replaces FORM SS-S-0003

JOB NAME _____
ARCHITECT _____
ENGINEER _____
CONTRACTOR _____
LOCATION _____



STERILFLO SYSTEM MODEL 412 OPERATING ROOM PARTICULATE CONTROL SYSTEM



NOTES :

- MATERIAL SPECIFICATIONS:** PLENUMS : 304 STAINLESS STEEL MINIMUM 22 GA.
PERFORATED CENTER PANEL FACES : 304 STAINLESS STEEL MINIMUM 22 GA.
SLOTTED PERIMETER FACES : 304 STAINLESS STEEL MINIMUM 20 GA.
- FINISH OF SLOTTED PERIMETER FACE PANELS AND ALL EXPOSED FRAMES IS NO. 4 SCRATCH OR EQUAL.
- ALL FACE PANELS ARE RETAINED WITH QUARTER TURN FASTENERS FOR EASE OF INSTALLATION & REMOVAL.
- FLANGED INLETS (4" DEEP) ARE SIZED ACCORDING TO THE NUMBER OF AIR CHANGES REQUIRED AND THE VOLUME OF THE ROOM SPECIFIED.
- MODEL 412 IS DESIGNED TO MEET A REQUIREMENT OF 1200 CFM – 2200 CFM.** IT PROVIDES AN UNINTERRUPTED AIR SUPPLY OVER THE OPERATING TABLE. THE SURGICAL TABLE MUST BE ALIGNED WITH THE STERILFLO SYSTEM, LONG SIDE TO LONG SIDE, TO PROVIDE THE DESIRED AIR PATTERN.