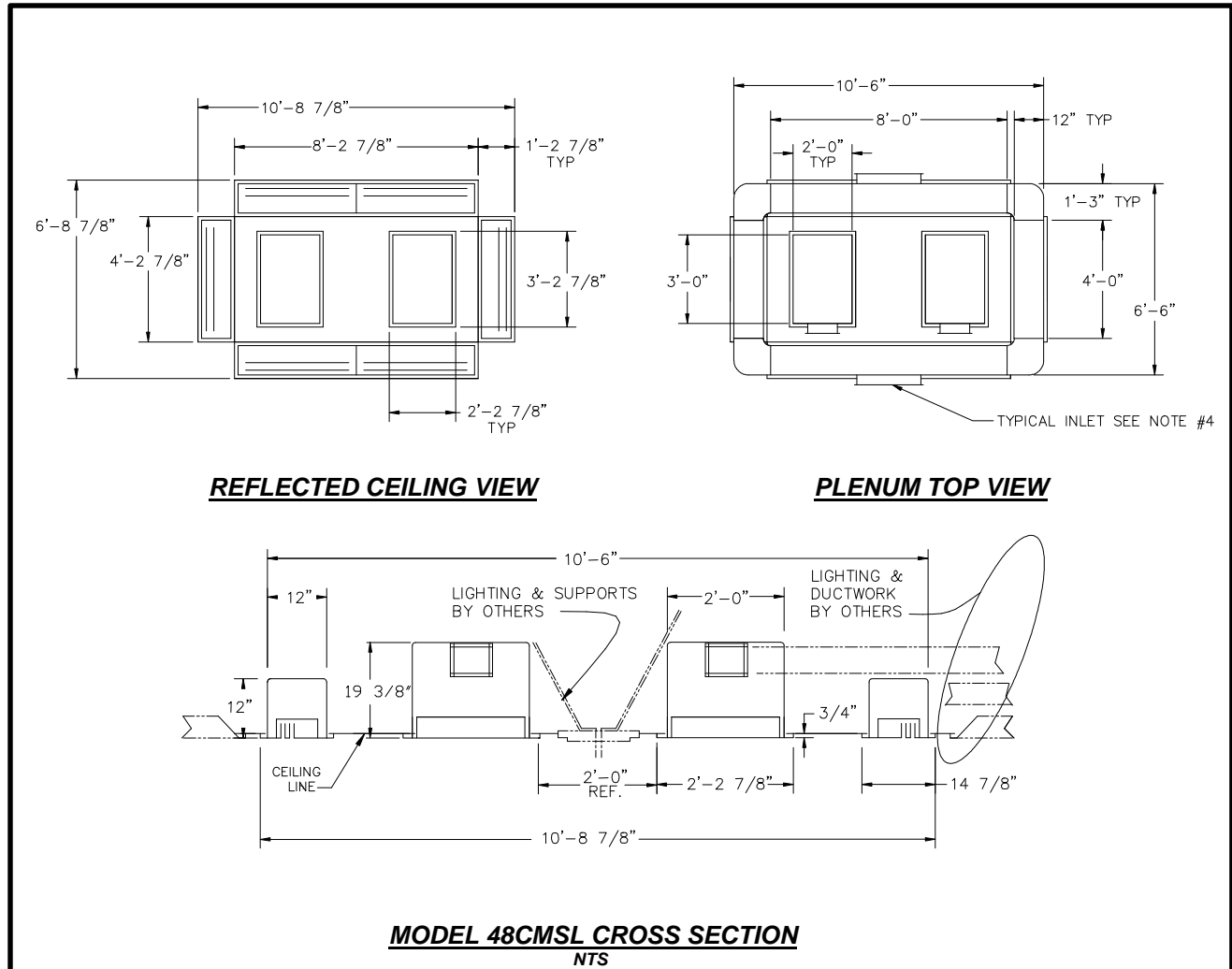


JOB NAME _____
 ARCHITECT _____
 ENGINEER _____
 CONTRACTOR _____
 LOCATION _____

SUBMITTALSHEET
 Form Number SS0002 Effective Date 11/97
 replaces FORM SS-S-0002



STERILFLO SYSTEM MODEL 48CMSL
OPERATING ROOM PARTICULATE CONTROL SYSTEM



NOTES :

- MATERIAL SPECIFICATIONS:** PLENUMS : 304 STAINLESS STEEL MINIMUM 22 GA.
 PERFORATED CENTER PANEL FACES : 304 STAINLESS STEEL MINIMUM 22 GA.
 SLOTTED PERIMETER FACES : 304 STAINLESS STEEL MINIMUM 20 GA.
- FINISH OF SLOTTED PERIMETER FACE PANELS AND ALL EXPOSED FRAMES IS NO. 4 SCRATCH OR EQUAL.
- ALL FACE PANELS ARE RETAINED WITH QUARTER TURN FASTENERS FOR EASE OF INSTALLATION & REMOVAL.
- FLANGED INLETS (4" DEEP) ARE SIZED ACCORDING TO THE NUMBER OF AIR CHANGES REQUIRED AND THE VOLUME OF THE ROOM SPECIFIED.
- MODEL 48CMSL** IS DESIGNED TO MEET A REQUIREMENT OF **900 CFM – 1600 CFM**. IT ALLOWS INSTALLATION OF A CENTER MOUNT SURGICAL LIGHT. THE SURGICAL TABLE MUST BE ALIGNED WITH THE STERILFLO SYSTEM, LONG SIDE TO LONG SIDE, TO PROVIDE THE DESIRED AIR PATTERN.