

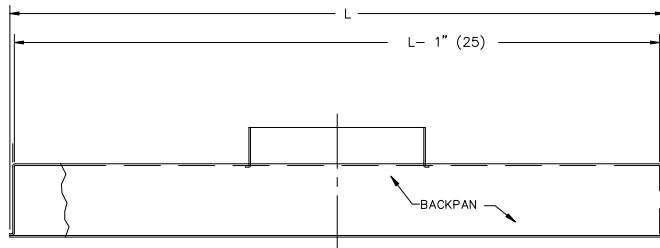
SUBMITTAL SHEET

Form Number DS0212.1 Effective Date 11/12
Replaces DS0212

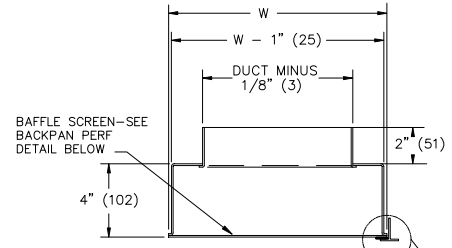
JOB NAME _____
ARCHITECT _____
ENGINEER _____
CONTRACTOR _____
LOCATION _____



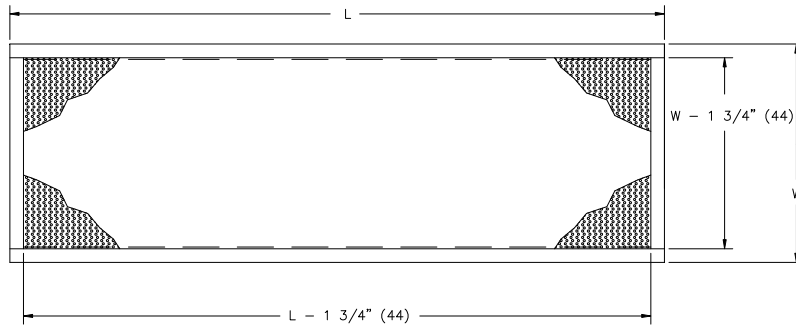
TAD / TADSS BACKPAN



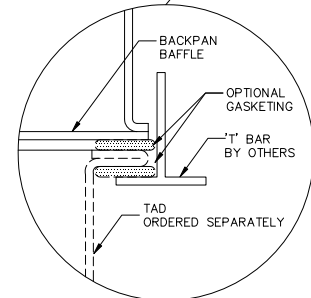
CURVED SIDE VIEW



CROSS SECTION



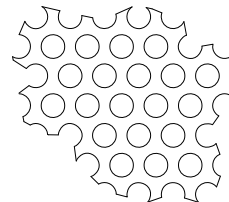
FACE VIEW



INSTALLATION DETAIL

NOTES :

1. Standard construction is an aluminum with an optional steel or aluminum backpan
2. Stainless steel TAD and backpan is an available option
3. Standard finish is 44 white
4. Stainless steel finish if 01 mill
5. mm shown in ()
6. Gaskets ordered & shipped loose for field installation
7. Total Air Diffuser is a trademark of Total Air, Inc.
8. The Total Air Diffuser is a patented device (U.S. Patent 4,616,558)



**BACK PAN BAFFLE
PERF DETAIL**
.04 (1) DIA HOLES ON
.058 (1) STAG CENTERS
43% OPEN AREA

TAD/TADSS BACKPAN				
	Panel Size	W	L	Ø Duct
1-Way	12" x 48" (305 x 1219)	11 3/4" (298)	47 3/4" (1213)	8" (203)
	24" x 24" (610 x 610)	23 3/4" (603)	23 3/4" (603)	8" (203)
	24" x 48" (610 x 1219)	23 3/4" (603)	23 3/4" (603)	12" (305)
2-Way	24" x 24" (610 x 610)	23 3/4" (603)	23 3/4" (603)	8" (203)
	24" x 48" (610 x 1219)	23 3/4" (603)	47 3/4" (1213)	12" (305)

**DIMENSIONS ARE SHOWN AS
INCHES (MM)**