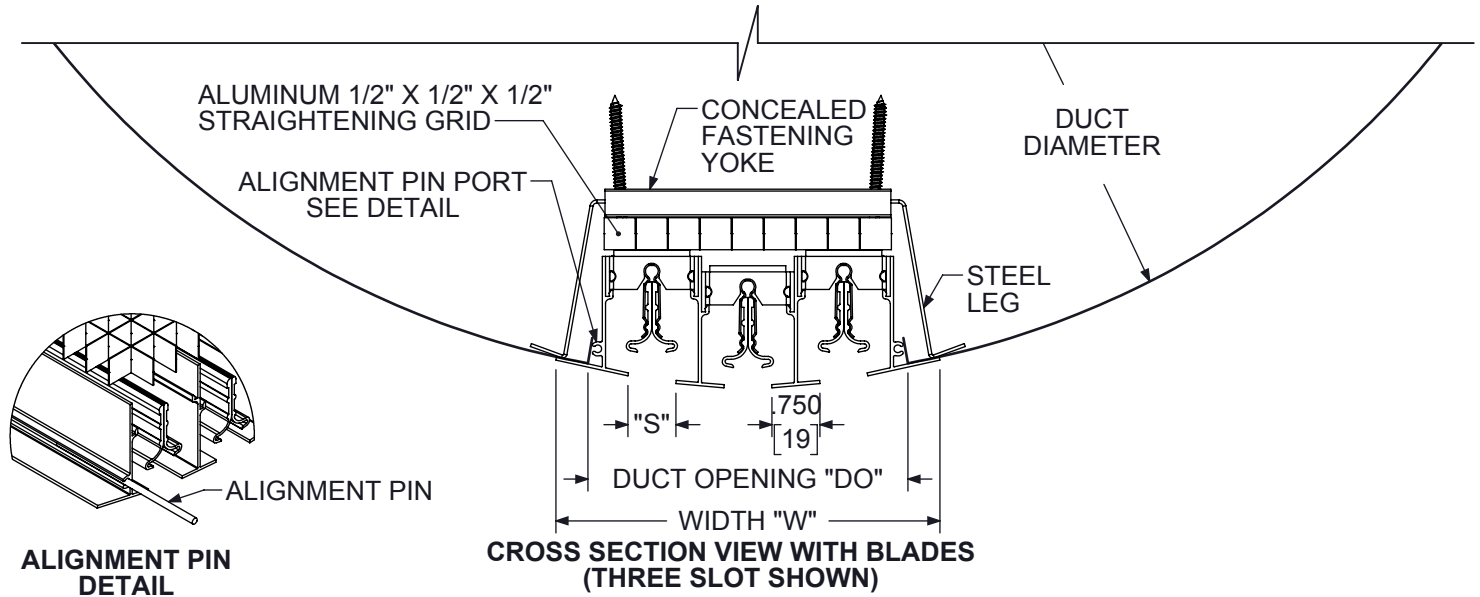


1900 SERIES LINEAR SLOT DIFFUSER

FRAME STYLE 'L'

SUBMITTAL SHEET

LINEAR SLOT DIFFUSER FOR EXPOSED SPIRAL DUCT



1975 SLOTS	DUCT DIAMETER Ø	"W"	"DO"	"S"
1	10 (254) - 24 (610)	3 (76)	2 (51)	0.75 (19)
2	12 (305) - 24 (610)	4.5 (114)	3.5 (89)	
3	14 (356) - 30 (762)	6 (152)	5 (127)	
4	20 (508) - 30 (762)	7.5 (191)	6.5 (165)	
5	28 (711) - 48 (1219)	9 (229)	8 (203)	

NOTES :

1. Individual Sections Range from 12" (305) to 72" (1829).
2. Longer Sections Butt Together with Alignment Pins.
3. See Form DS0710 for Length Details
4. Dimensions Given as Inches (MM)

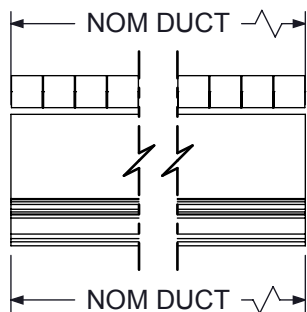
Material Specifications:

- Standard Finish is 44 British White with Black Blades
- 'T' Bars and Blades are Extruded Aluminum
- Concealed Mounting Bracket is Aluminum with Steel Leg
- Blade Clips are Steel

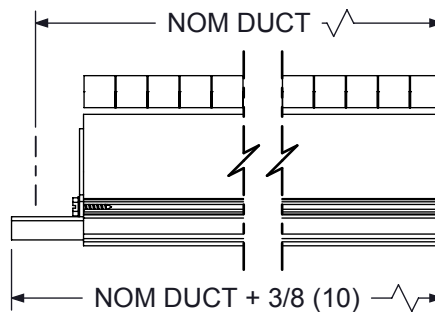
1910 SLOTS	DUCT DIAMETER Ø	"W"	"DO"	"S"
1	10 (254) - 24 (610)	3.25 (83)	2.25 (57)	1 (25)
2	12 (305) - 28 (711)	5 (127)	4 (102)	
3	16 (406) - 32 (813)	6.75 (171)	5.75 (146)	
4	26 (660) - 48 (1219)	8.5 (216)	7.5 (191)	
5	36 (914) - 48 (1219)	10.25 (260)	9.25 (235)	

OPTIONS:

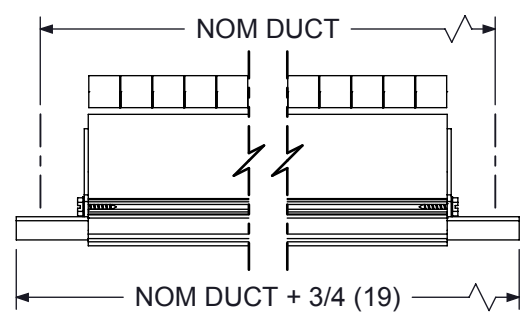
- NO BLADES



TYPE B
 BUTT CUT
 BOTH ENDS



TYPE F
 ONE END CAP
 ONE BUTT CUT



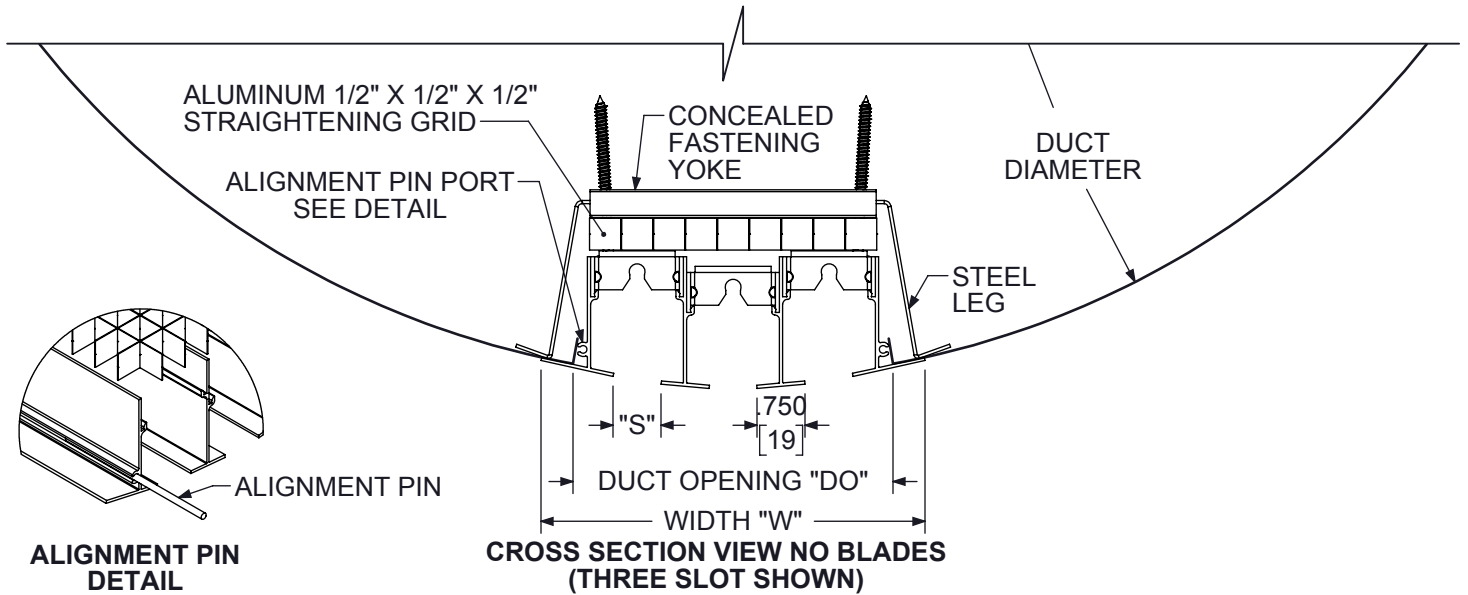
TYPE E
 END CAP
 BOTH ENDS

1900 SERIES LINEAR SLOT DIFFUSER

FRAME STYLE 'L'

SUBMITTAL SHEET

LINEAR SLOT DIFFUSER FOR EXPOSED SPIRAL DUCT



1975 SLOTS	DUCT DIAMETER Ø	"W"	"DO"	"S"
1	10 (254) - 24 (610)	3 (76)	2 (51)	0.75 (19)
2	12 (305) - 24 (610)	4.5 (114)	3.5 (89)	
3	14 (356) - 30 (762)	6 (152)	5 (127)	
4	20 (508) - 30 (762)	7.5 (191)	6.5 (165)	
5	28 (711) - 48 (1219)	9 (229)	8 (203)	

NOTES:

- Individual Sections Range from 12" (305) to 72" (1829).
- Longer Sections Butt Together with Alignment Pins.
- See Form DS0710 for Length Details
- Dimensions Given as Inches (MM)

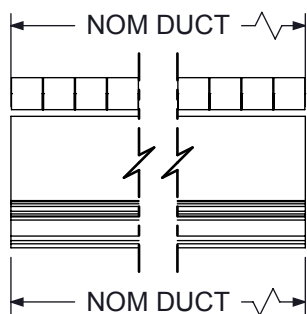
Material Specifications:

- Standard Finish is 44 British White with Black Blades
- 'T' Bars and Blades are Extruded Aluminum
- Concealed Mounting Bracket is Aluminum with Steel Leg
- Blade Clips are Steel

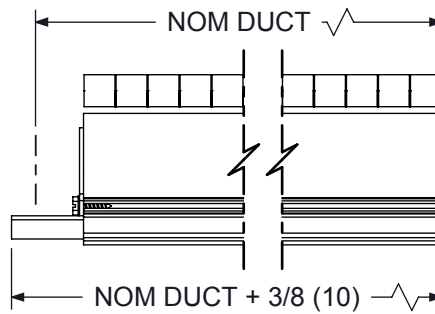
1910 SLOTS	DUCT DIAMETER Ø	"W"	"DO"	"S"
1	10 (254) - 24 (610)	3.25 (83)	2.25 (57)	1 (25)
2	12 (305) - 28 (711)	5 (127)	4 (102)	
3	16 (406) - 32 (813)	6.75 (171)	5.75 (146)	
4	26 (660) - 48 (1219)	8.5 (216)	7.5 (191)	
5	36 (914) - 48 (1219)	10.25 (260)	9.25 (235)	

OPTIONS:

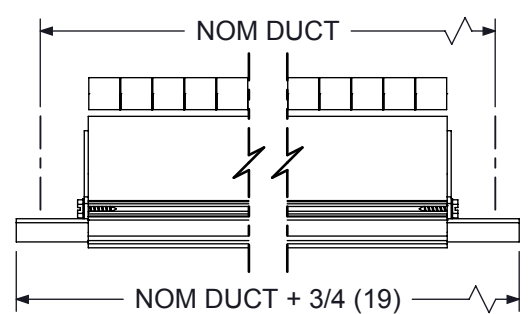
- WITH BLADES



TYPE B
 BUTT CUT
 BOTH ENDS



TYPE F
 ONE END CAP
 ONE BUTT CUT



TYPE E
 END CAP
 BOTH ENDS