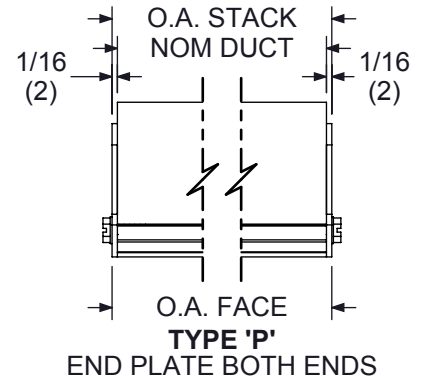
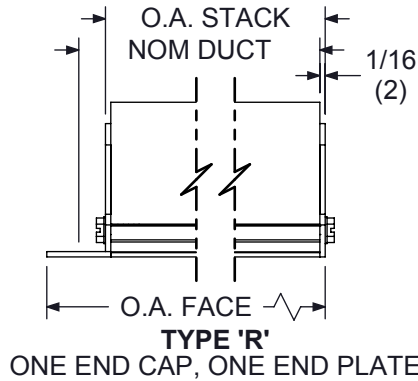
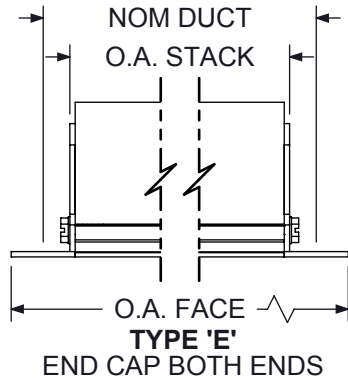


1900 LENGTH DIMENSIONAL DETAILS

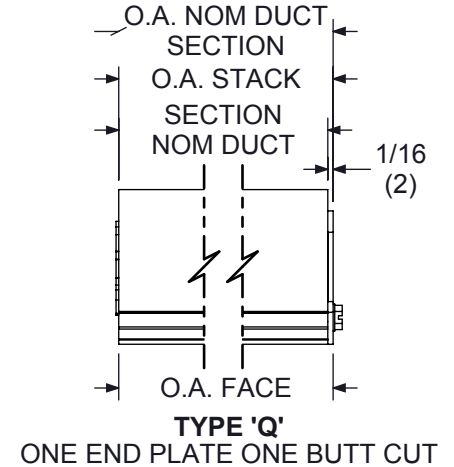
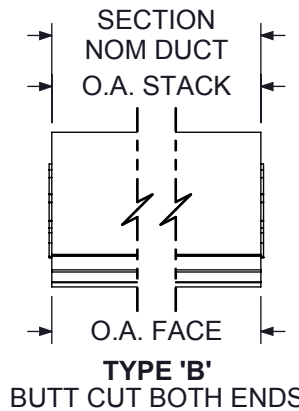
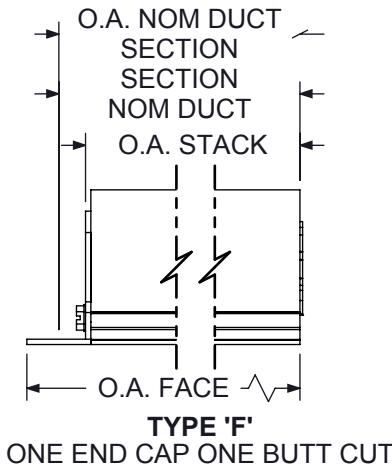
SIZING GUIDE - FRAMES 'B' THROUGH 'M'

SUBMITTAL SHEET



FULL FRAME STYLES

FRAME STYLE	UNIT TYPE 'E'		UNIT TYPE 'R'		UNIT TYPE 'P'	
	O.A. STACK	O.A. FACE	O.A. STACK	O.A. FACE	O.A. STACK	O.A. FACE
B	$D - 1 \frac{3}{8}$ (35)	$D + \frac{3}{4}$ (19)	$D - \frac{5}{8}$ (16)	$D + \frac{7}{16}$ (11)	$D + \frac{1}{8}$ (3)	$D + \frac{1}{8}$ (3)
C						
D						
E						
F	N/A					
I	$D - \frac{11}{16}$ (17)	DUCT	$D - \frac{1}{4}$ (6)	$D + \frac{1}{16}$ (1.5)		
J	$D - 1 \frac{3}{8}$ (35)	$D + \frac{3}{4}$ (19)	$D - \frac{5}{8}$ (16)	$D + \frac{7}{16}$ (11)		
K	$D - \frac{17}{16}$ (27)	$D - \frac{1}{4}$ (6)			N/A	
L	$D - 1 \frac{3}{8}$ (35)	$D + \frac{3}{4}$ (19)			N/A	
****M	$D - 1 \frac{3}{16}$ (27)	$D + 1 \frac{1}{16}$ (27)			N/A	
N	N/A				$D - \frac{3}{4}$ (19)	$D - \frac{5}{8}$ (16)
S	$D - 1 \frac{1}{2}$ (38)	$D - \frac{3}{16}$ (5)			N/A	



SECTIONAL COMPONENTS

FRAME STYLE	SECTION TYPE 'F'		SECTION TYPE 'B'		SECTION TYPE 'Q'	
	O.A. STACK	O.A. FACE	O.A. STACK	O.A. FACE	O.A. STACK	O.A. FACE
B	$D - \frac{11}{16}$ (17)	$D + \frac{3}{8}$ (10)	DUCT	DUCT	$D + \frac{1}{16}$ (1.5)	$D + \frac{1}{16}$ (1.5)
C						
D						
E						
F	N/A					
I	$D - \frac{5}{16}$ (8)	DUCT				
J	$D - \frac{11}{16}$ (17)	$D + \frac{3}{8}$ (10)				
K		$D - \frac{1}{8}$ (3)			N/A	
L		$D + \frac{3}{8}$ (10)			N/A	
****M		$D - \frac{19}{32}$ (15)	$D + \frac{17}{32}$ (13)			N/A

NOTES:

- D EQUALS NOMINAL DUCT LENGTH
- 6'-0" (1829) MAX PER SECTION
- ****FRAME M WILL ALWAYS UTILIZE NON-REMOVABLE MITERED END CAPS, IF AN ENDCAP IS SELECTED

DIMENSIONS GIVEN AS INCHES (MM)

Revision Date: 7/26/2024

Form: DS0710.10

Replaces: DS0710.9

Product Information is Subject to Change Without Notice