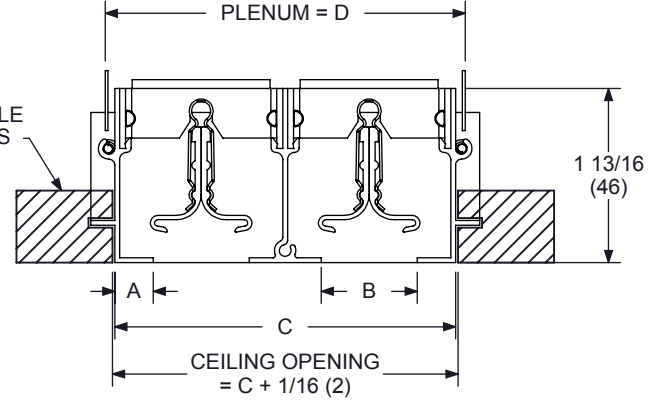


**SIDE VIEW**



**SECTION A-A  
WITH BLADES**

1950I (1/2" Spacing)				
SLOT	A	B	C	D
1	7/16 (11)	1/2 (13)	1-3/8 (35)	1-7/16 (37)
2	7/16 (11)	1/2 (13)	2-5/8 (67)	2-11/16 (68)
3	7/16 (11)	1/2 (13)	3-7/8 (98)	3-15/16 (100)
4	7/16 (11)	1/2 (13)	5-1/8 (130)	5-3/16 (132)
5	7/16 (11)	1/2 (13)	6-3/8 (162)	6-7/16 (164)
6	7/16 (11)	1/2 (13)	7-5/8 (194)	7-11/16 (195)
7	7/16 (11)	1/2 (13)	8-7/8 (225)	8-15/16 (227)
8	7/16 (11)	1/2 (13)	10-1/8 (257)	10-3/16 (259)

1975I (3/4" Spacing)				
SLOT	A	B	C	D
1	7/16 (11)	3/4 (19)	1-5/8 (41)	1-11/16 (43)
2	7/16 (11)	3/4 (19)	3-1/8 (79)	3-3/16 (81)
3	7/16 (11)	3/4 (19)	4-5/8 (117)	4-11/16 (119)
4	7/16 (11)	3/4 (19)	6-1/8 (156)	6-3/16 (157)
5	7/16 (11)	3/4 (19)	7-5/8 (194)	7-11/16 (195)
6	7/16 (11)	3/4 (19)	9-1/8 (232)	9-3/16 (233)
7	7/16 (11)	3/4 (19)	10-5/8 (270)	10-11/16 (271)
8	7/16 (11)	3/4 (19)	12-1/8 (308)	12-3/16 (310)

1910I (1" Spacing)				
SLOT	A	B	C	D
1	7/16 (11)	1 (25)	1-7/8 (48)	1-15/16 (49)
2	7/16 (11)	1 (25)	3-5/8 (92)	3-11/16 (94)
3	7/16 (11)	1 (25)	5-3/8 (137)	5-7/16 (138)
4	7/16 (11)	1 (25)	7-1/8 (181)	7-3/16 (183)
5	7/16 (11)	1 (25)	8-7/8 (225)	8-15/16 (227)
6	7/16 (11)	1 (25)	10-5/8 (270)	10-11/16 (271)
7	7/16 (11)	1 (25)	12-3/8 (314)	12-7/16 (316)
8	7/16 (11)	1 (25)	14-1/8 (359)	14-3/16 (360)

1915I (1-1/2" Spacing)				
SLOT	A	B	C	D
1	7/16 (11)	1-1/2 (38)	2-3/8 (60)	2-7/16 (62)
2	7/16 (11)	1-1/2 (38)	4-5/8 (117)	4-11/16 (119)
3	7/16 (11)	1-1/2 (38)	6-7/8 (175)	6-15/16 (176)
4	7/16 (11)	1-1/2 (38)	9-1/8 (232)	9-3/16 (233)
1920I (2" Spacing)				
1	7/16 (11)	2 (51)	2-7/8 (73)	2-15/16 (75)
2	7/16 (11)	2 (51)	5-5/8 (143)	5-11/16 (144)
3	7/16 (11)	2 (51)	8-3/8 (213)	8-7/16 (214)
4	7/16 (11)	2 (51)	11-1/8 (283)	11-3/16 (284)

**NOTES :**

- Individual Sections Range from 12" (305) to 72" (1829) Long. Longer Units will Consist of Sections Butted Together with Alignment Pins
- See Form DS0710 for Length Details
- See Form DS0711 for 1900 Boot Information
- Construction is Extruded Aluminum with Steel Clips
- Standard Finish : Straight Frame - White, Blades - Back
- Standard Finish : Curved Frame - White, Deflectors - White

**OPTIONS :**

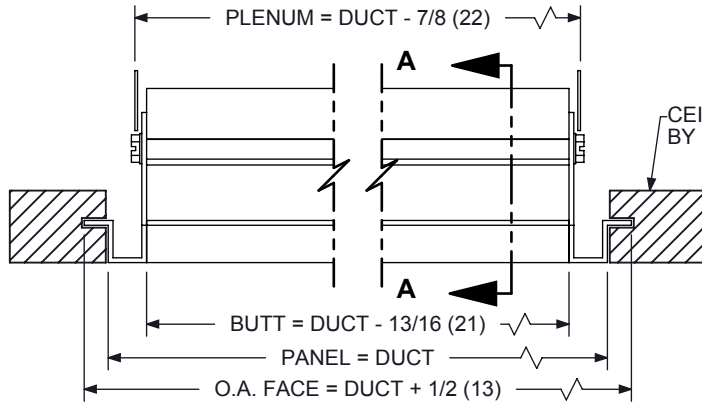
- STEEL BLANK OFF STRIPS
- NO BLADES

**DIMENSIONS GIVEN AS  
INCHES (MM)**

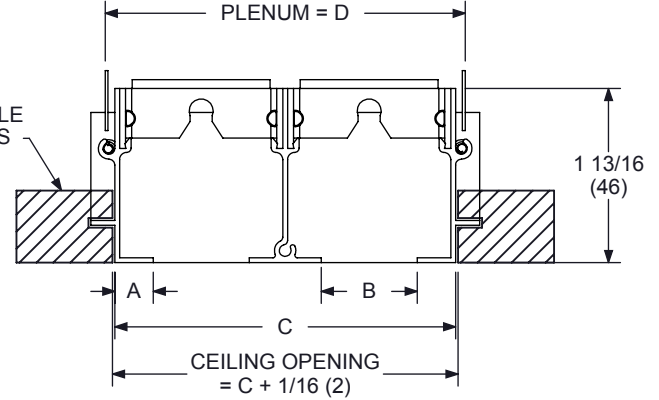
## 1900 SERIES LINEAR SLOT DIFFUSER FRAME STYLE 'I' SPLINE CEILING MOUNT

JOB NAME \_\_\_\_\_  
ENGINEER \_\_\_\_\_  
CONTRACTOR \_\_\_\_\_  
TAG \_\_\_\_\_

## SUBMITTAL SHEET



**SIDE VIEW**



**SECTION A-A  
NO BLADES**

1950I (1/2" Spacing)				
SLOT	A	B	C	D
1	7/16 (11)	1/2 (13)	1-3/8 (35)	1-7/16 (37)
2	7/16 (11)	1/2 (13)	2-5/8 (67)	2-11/16 (68)
3	7/16 (11)	1/2 (13)	3-7/8 (98)	3-15/16 (100)
4	7/16 (11)	1/2 (13)	5-1/8 (130)	5-3/16 (132)
5	7/16 (11)	1/2 (13)	6-3/8 (162)	6-7/16 (164)
6	7/16 (11)	1/2 (13)	7-5/8 (194)	7-11/16 (195)
7	7/16 (11)	1/2 (13)	8-7/8 (225)	8-15/16 (227)
8	7/16 (11)	1/2 (13)	10-1/8 (257)	10-3/16 (259)

1975I (3/4" Spacing)				
SLOT	A	B	C	D
1	7/16 (11)	3/4 (19)	1-5/8 (41)	1-11/16 (43)
2	7/16 (11)	3/4 (19)	3-1/8 (79)	3-3/16 (81)
3	7/16 (11)	3/4 (19)	4-5/8 (117)	4-11/16 (119)
4	7/16 (11)	3/4 (19)	6-1/8 (156)	6-3/16 (157)
5	7/16 (11)	3/4 (19)	7-5/8 (194)	7-11/16 (195)
6	7/16 (11)	3/4 (19)	9-1/8 (232)	9-3/16 (233)
7	7/16 (11)	3/4 (19)	10-5/8 (270)	10-11/16 (271)
8	7/16 (11)	3/4 (19)	12-1/8 (308)	12-3/16 (310)

1910I (1" Spacing)				
SLOT	A	B	C	D
1	7/16 (11)	1 (25)	1-7/8 (48)	1-15/16 (49)
2	7/16 (11)	1 (25)	3-5/8 (92)	3-11/16 (94)
3	7/16 (11)	1 (25)	5-3/8 (137)	5-7/16 (138)
4	7/16 (11)	1 (25)	7-1/8 (181)	7-3/16 (183)
5	7/16 (11)	1 (25)	8-7/8 (225)	8-15/16 (227)
6	7/16 (11)	1 (25)	10-5/8 (270)	10-11/16 (271)
7	7/16 (11)	1 (25)	12-3/8 (314)	12-7/16 (316)
8	7/16 (11)	1 (25)	14-1/8 (359)	14-3/16 (360)

1915I (1-1/2" Spacing)				
SLOT	A	B	C	D
1	7/16 (11)	1-1/2 (38)	2-3/8 (60)	2-7/16 (62)
2	7/16 (11)	1-1/2 (38)	4-5/8 (117)	4-11/16 (119)
3	7/16 (11)	1-1/2 (38)	6-7/8 (175)	6-15/16 (176)
4	7/16 (11)	1-1/2 (38)	9-1/8 (232)	9-3/16 (233)
1920I (2" Spacing)				
1	7/16 (11)	2 (51)	2-7/8 (73)	2-15/16 (75)
2	7/16 (11)	2 (51)	5-5/8 (143)	5-11/16 (144)
3	7/16 (11)	2 (51)	8-3/8 (213)	8-7/16 (214)
4	7/16 (11)	2 (51)	11-1/8 (283)	11-3/16 (284)

**NOTES :**

- Individual Sections Range from 12" (305) to 72" (1829) Long. Longer Units will Consist of Sections Butted Together with Alignment Pins
- See Form DS0710 for Length Details
- See Form DS0711 for 1900 Boot Information
- Construction is Extruded Aluminum with Steel Clips
- Standard Finish : Straight Frame - White, Blades - Back
- Standard Finish : Curved Frame - White, Deflectors - White

**OPTIONS :**

- STEEL BLANK OFF STRIPS
- WITH BLADES

**DIMENSIONS GIVEN AS  
INCHES (MM)**