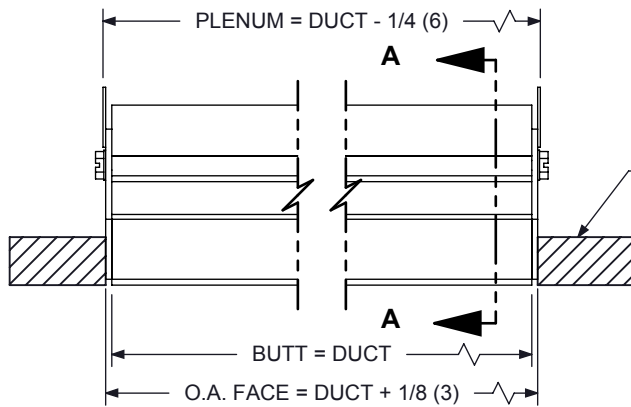


1900 SERIES LINEAR SLOT DIFFUSER

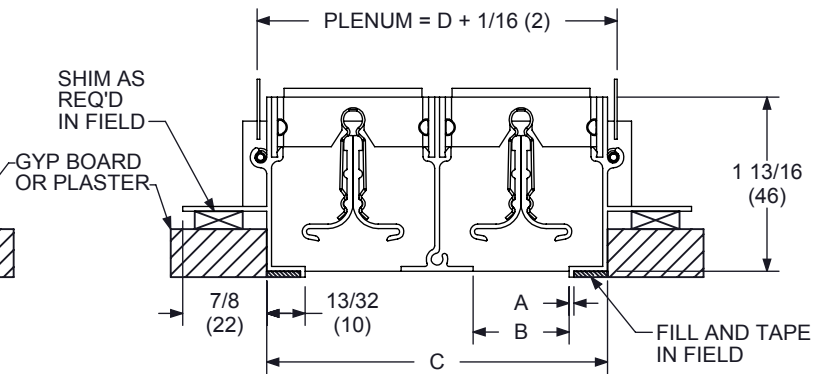
FRAME STYLE 'F'

SUBMITTAL SHEET

PLASTER/TILE MOUNT WITH CONCEALED FLUSH-FACE



SIDE VIEW



SECTION A-A WITH BLADES

1950F (1/2" Spacing)				
SLOT	A	B	C	D
1	1/16 (2)	1/2 (13)	1-5/16 (33)	1-3/8 (35)
2	1/16 (2)	1/2 (13)	2-9/16 (65)	2-5/8 (67)
3	1/16 (2)	1/2 (13)	3-13/16 (97)	3-7/8 (98)
4	1/16 (2)	1/2 (13)	5-1/16 (129)	5-1/8 (130)
5	1/16 (2)	1/2 (13)	6-5/16 (160)	6-3/8 (162)
6	1/16 (2)	1/2 (13)	7-9/16 (192)	7-5/8 (194)
7	1/16 (2)	1/2 (13)	8-13/16 (224)	8-7/8 (225)
8	1/16 (2)	1/2 (13)	10-1/16 (256)	10-1/8 (257)

1975F (3/4" Spacing)				
SLOT	A	B	C	D
1	1/16 (2)	3/4 (19)	1-9/16 (40)	1-5/8 (41)
2	1/16 (2)	3/4 (19)	3-1/16 (78)	3-1/8 (79)
3	1/16 (2)	3/4 (19)	4-9/16 (116)	4-5/8 (117)
4	1/16 (2)	3/4 (19)	6-1/16 (154)	6-1/8 (156)
5	1/16 (2)	3/4 (19)	7-9/16 (192)	7-5/8 (194)
6	1/16 (2)	3/4 (19)	9-1/16 (230)	9-1/8 (232)
7	1/16 (2)	3/4 (19)	10-9/16 (268)	10-5/8 (270)
8	1/16 (2)	3/4 (19)	12-1/16 (306)	12-1/8 (308)

1910F (1" Spacing)				
SLOT	A	B	C	D
1	1/16 (2)	1 (25)	1-13/16 (46)	1-7/8 (48)
2	1/16 (2)	1 (25)	3-9/16 (90)	3-5/8 (92)
3	1/16 (2)	1 (25)	5-5/16 (135)	5-3/8 (137)
4	1/16 (2)	1 (25)	7-1/16 (179)	7-1/8 (181)
5	1/16 (2)	1 (25)	8-13/16 (224)	8-7/8 (225)
6	1/16 (2)	1 (25)	10-9/16 (268)	10-5/8 (270)
7	1/16 (2)	1 (25)	12-5/16 (313)	12-3/8 (314)
8	1/16 (2)	1 (25)	14-1/16 (357)	14-1/8 (359)

1915F (1-1/2" Spacing)				
SLOT	A	B	C	D
1	1/16 (2)	1-1/2 (38)	2-5/16 (59)	2-3/8 (60)
2	1/16 (2)	1-1/2 (38)	4-9/16 (116)	4-5/8 (117)
3	1/16 (2)	1-1/2 (38)	6-13/16 (173)	6-7/8 (175)
4	1/16 (2)	1-1/2 (38)	9-1/16 (230)	9-1/8 (232)
1920F (2" Spacing)				
1	1/16 (2)	2 (51)	2-13/16 (71)	2-7/8 (73)
2	1/16 (2)	2 (51)	5-9/16 (141)	5-5/8 (143)
3	1/16 (2)	2 (51)	8-5/16 (211)	8-3/8 (213)
4	1/16 (2)	2 (51)	11-1/16 (281)	11-1/8 (283)

NOTES :

- Individual Sections Range from 12" (305) to 72" (1829) Long. Longer Units will Consist of Sections Butted Together with Alignment Pins
- See Form DS0710 for Length Details
- See Form DS0711 for 1900 Boot Information
- Construction is Extruded Aluminum with Steel Clips
- Standard Finish : Straight Frame - White, Blades - Back
- Standard Finish : Curved Frame - White, Deflectors - White

OPTIONS :

- STEEL BLANK OFF STRIPS
- NO BLADES

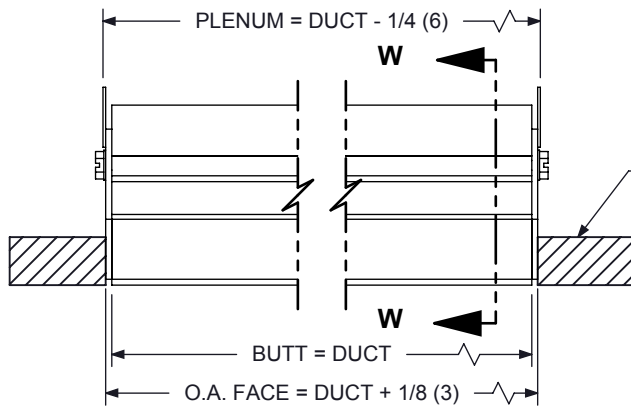
DIMENSIONS GIVEN AS INCHES (MM)

1900 SERIES LINEAR SLOT DIFFUSER

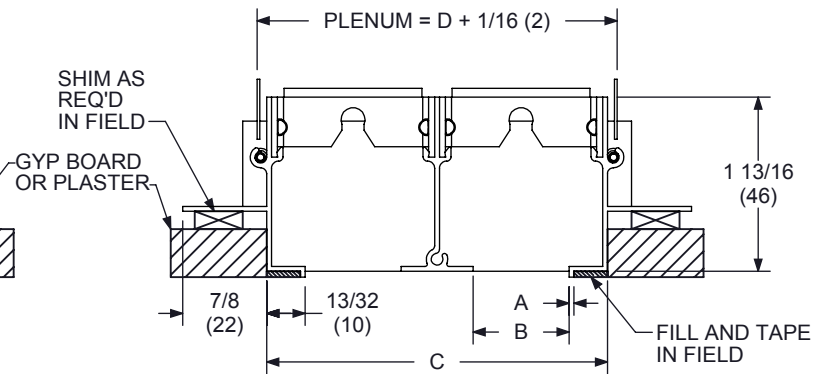
FRAME STYLE 'F'

SUBMITTAL SHEET

PLASTER/TILE MOUNT WITH CONCEALED FLUSH-FACE



SIDE VIEW



**SECTION W-W
NO BLADES**

1950F (1/2" Spacing)				
SLOT	A	B	C	D
1	1/16 (2)	1/2 (13)	1-5/16 (33)	1-3/8 (35)
2	1/16 (2)	1/2 (13)	2-9/16 (65)	2-5/8 (67)
3	1/16 (2)	1/2 (13)	3-13/16 (97)	3-7/8 (98)
4	1/16 (2)	1/2 (13)	5-1/16 (129)	5-1/8 (130)
5	1/16 (2)	1/2 (13)	6-5/16 (160)	6-3/8 (162)
6	1/16 (2)	1/2 (13)	7-9/16 (192)	7-5/8 (194)
7	1/16 (2)	1/2 (13)	8-13/16 (224)	8-7/8 (225)
8	1/16 (2)	1/2 (13)	10-1/16 (256)	10-1/8 (257)

1975F (3/4" Spacing)				
SLOT	A	B	C	D
1	1/16 (2)	3/4 (19)	1-9/16 (40)	1-5/8 (41)
2	1/16 (2)	3/4 (19)	3-1/16 (78)	3-1/8 (79)
3	1/16 (2)	3/4 (19)	4-9/16 (116)	4-5/8 (117)
4	1/16 (2)	3/4 (19)	6-1/16 (154)	6-1/8 (156)
5	1/16 (2)	3/4 (19)	7-9/16 (192)	7-5/8 (194)
6	1/16 (2)	3/4 (19)	9-1/16 (230)	9-1/8 (232)
7	1/16 (2)	3/4 (19)	10-9/16 (268)	10-5/8 (270)
8	1/16 (2)	3/4 (19)	12-1/16 (306)	12-1/8 (308)

1910F (1" Spacing)				
SLOT	A	B	C	D
1	1/16 (2)	1 (25)	1-13/16 (46)	1-7/8 (48)
2	1/16 (2)	1 (25)	3-9/16 (90)	3-5/8 (92)
3	1/16 (2)	1 (25)	5-5/16 (135)	5-3/8 (137)
4	1/16 (2)	1 (25)	7-1/16 (179)	7-1/8 (181)
5	1/16 (2)	1 (25)	8-13/16 (224)	8-7/8 (225)
6	1/16 (2)	1 (25)	10-9/16 (268)	10-5/8 (270)
7	1/16 (2)	1 (25)	12-5/16 (313)	12-3/8 (314)
8	1/16 (2)	1 (25)	14-1/16 (357)	14-1/8 (359)

1915F (1-1/2" Spacing)				
SLOT	A	B	C	D
1	1/16 (2)	1-1/2 (38)	2-5/16 (59)	2-3/8 (60)
2	1/16 (2)	1-1/2 (38)	4-9/16 (116)	4-5/8 (117)
3	1/16 (2)	1-1/2 (38)	6-13/16 (173)	6-7/8 (175)
4	1/16 (2)	1-1/2 (38)	9-1/16 (230)	9-1/8 (232)
1920F (2" Spacing)				
1	1/16 (2)	2 (51)	2-13/16 (71)	2-7/8 (73)
2	1/16 (2)	2 (51)	5-9/16 (141)	5-5/8 (143)
3	1/16 (2)	2 (51)	8-5/16 (211)	8-3/8 (213)
4	1/16 (2)	2 (51)	11-1/16 (281)	11-1/8 (283)

NOTES :

- Individual Sections Range from 12" (305) to 72" (1829) Long. Longer Units will Consist of Sections Butted Together with Alignment Pins
- See Form DS0710 for Length Details
- See Form DS0711 for 1900 Boot Information
- Construction is Extruded Aluminum with Steel Clips
- Standard Finish : Straight Frame - White, Blades - Back
- Standard Finish : Curved Frame - White, Deflectors - White

OPTIONS :

- STEEL BLANK OFF STRIPS
- WITH BLADES

**DIMENSIONS GIVEN AS
INCHES (MM)**