

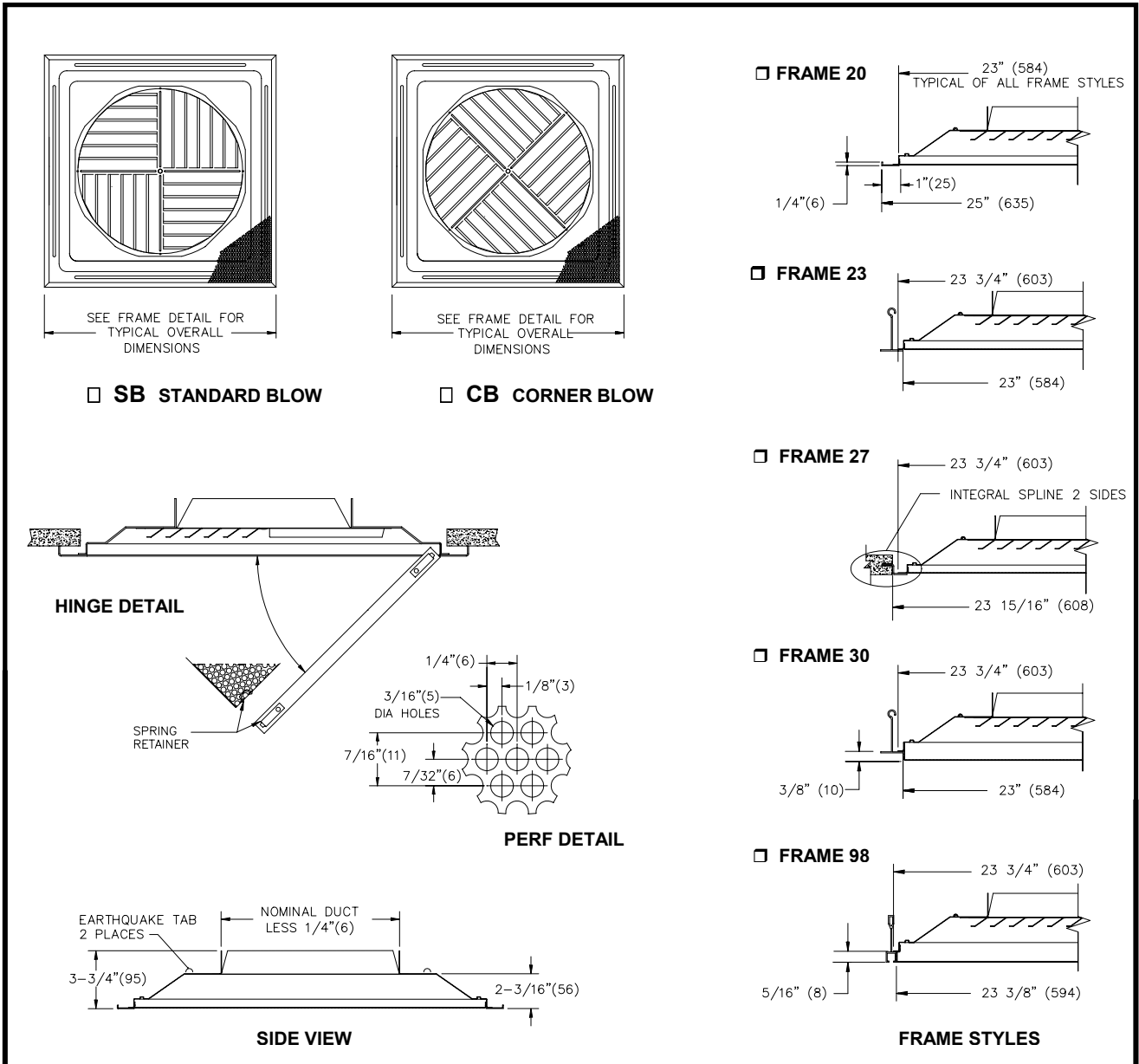
JOB NAME _____
 ARCHITECT _____
 ENGINEER _____
 CONTRACTOR _____
 LOCATION _____

SUBMITTAL SHEET
 Form Number DS6150.2 Effective Date 8/03
 Replaces Form DS6150.1



6150 / 56150 Four Way Series
Perforated Diffuser, Square Neck & Stamped Core

24"x24" PANEL



		PANEL SIZES					
		12x12 (305x305)	16x16 (406x406)	20x20 (508x508)	24x24 (610x610)	24x12 (610x305)	48x24(1219x610)
INLET SIZES AVAILABLE	N/A	N/A	N/A	6x6 (152x152)	N/A	N/A	
	DIMENSIONS ARE IN GIVEN AS INCHES (MM)				8x8 (203x203)	SEE SERIES 6290 OR 56290 FOR MATCHING RETURN	
				10x10 (254x254)			

- NOTE :**
1. 6150 CONSTRUCTION IS ALL STEEL.
 2. 56150 CONSTRUCTION IS STEEL WITH ALUMINUM PERF.
 3. SB AND CB SELF CENTERING CORES CAN BE ROTATED IN 45° INCREMENTS IN THE FIELD.
 4. STANDARD FINISH IS BRITISH WHITE