

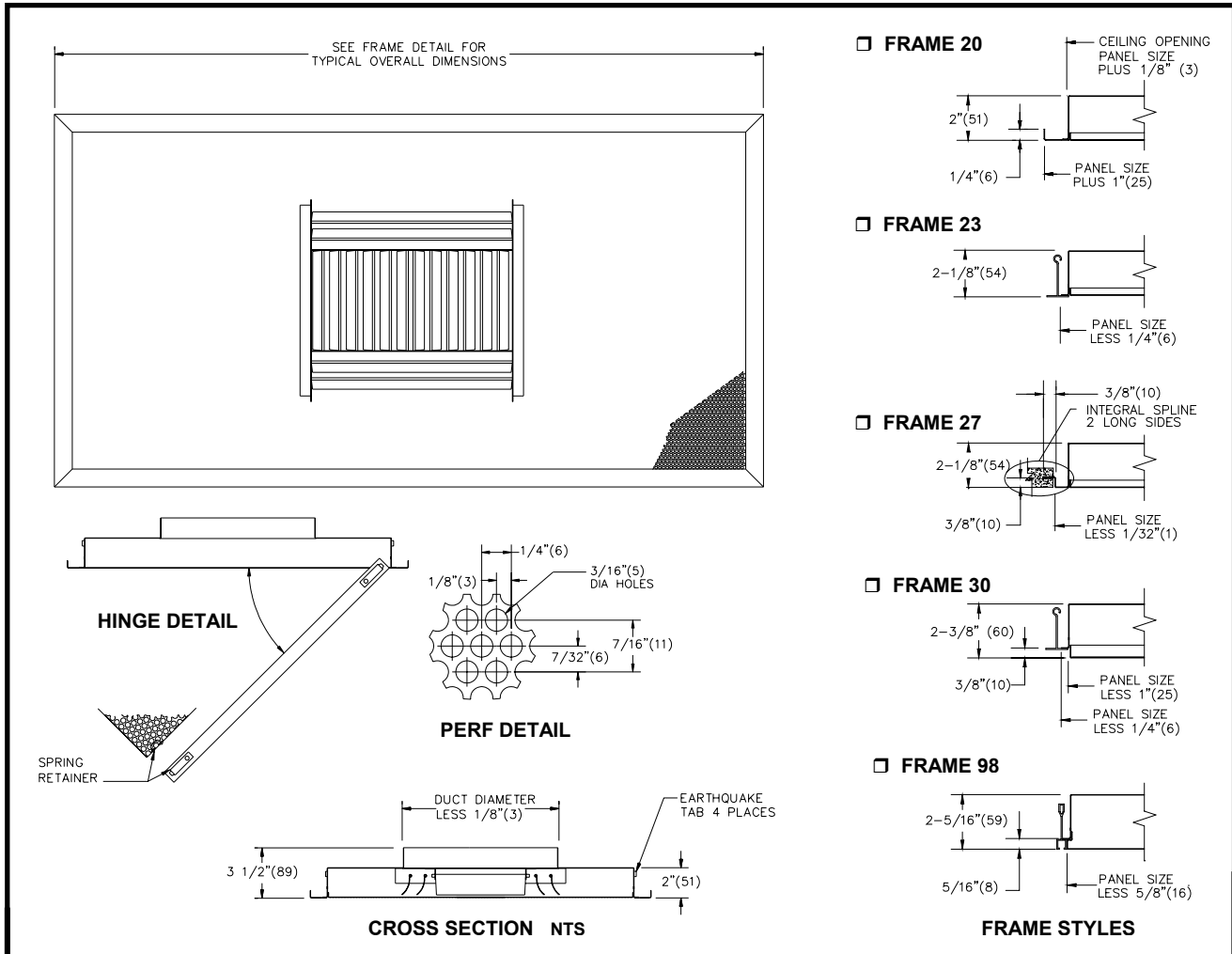
JOB NAME _____
 ARCHITECT _____
 ENGINEER _____
 CONTRACTOR _____
 LOCATION _____

SUBMITTAL SHEET
 Form Number DS6026.2 Effective Date 4/03
 Replaces Forms DS6026.1



6500 / 56500 SERIES

Perforated Diffuser, Round Neck & Adjustable Curved Blades



	6501	6502	6502C	6503	6504
DEFLECTION PATTERN OPTIONS					

PANEL SIZES						
	12x12 (305x305)	16x16 (406x406)	20x20 (508x508)	24x24 (610x610)	24x12 (610x305)	48x24 (1219x610)
INLET SIZES AVAILABLE	6 (152)	6 (152)	6 (152)	SEE FORM DS6024 FOR ADDITIONAL SIZES AVAILABLE 16 (406)	6 (152)	6 (152)
		8 (203)	8 (203)			8 (203)
		10 (254)	10 (254)			10 (254)
			12 (305)			12 (305)
						14 (356)
						16 (406)
DIMENSIONS ARE IN GIVEN AS INCHES (MM)						

NOTE : 1. 6500 CONSTRUCTION IS ALL STEEL.
 2. 56500 CONSTRUCTION IS STEEL WITH ALUMINUM PERF.

3. STANDARD FINISH IS BRITISH WHITE

Product Information is Subject to Change Without Notice

Product Information is Subject to Change Without Notice