

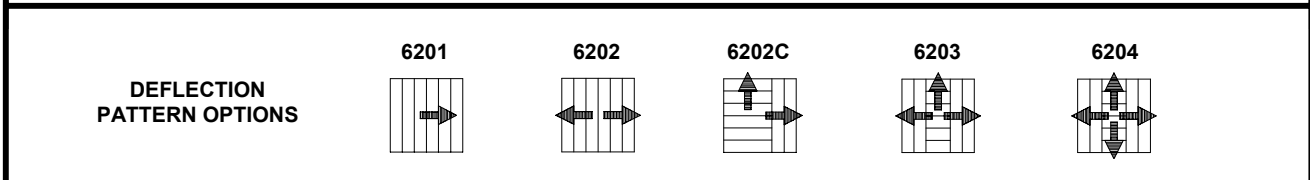
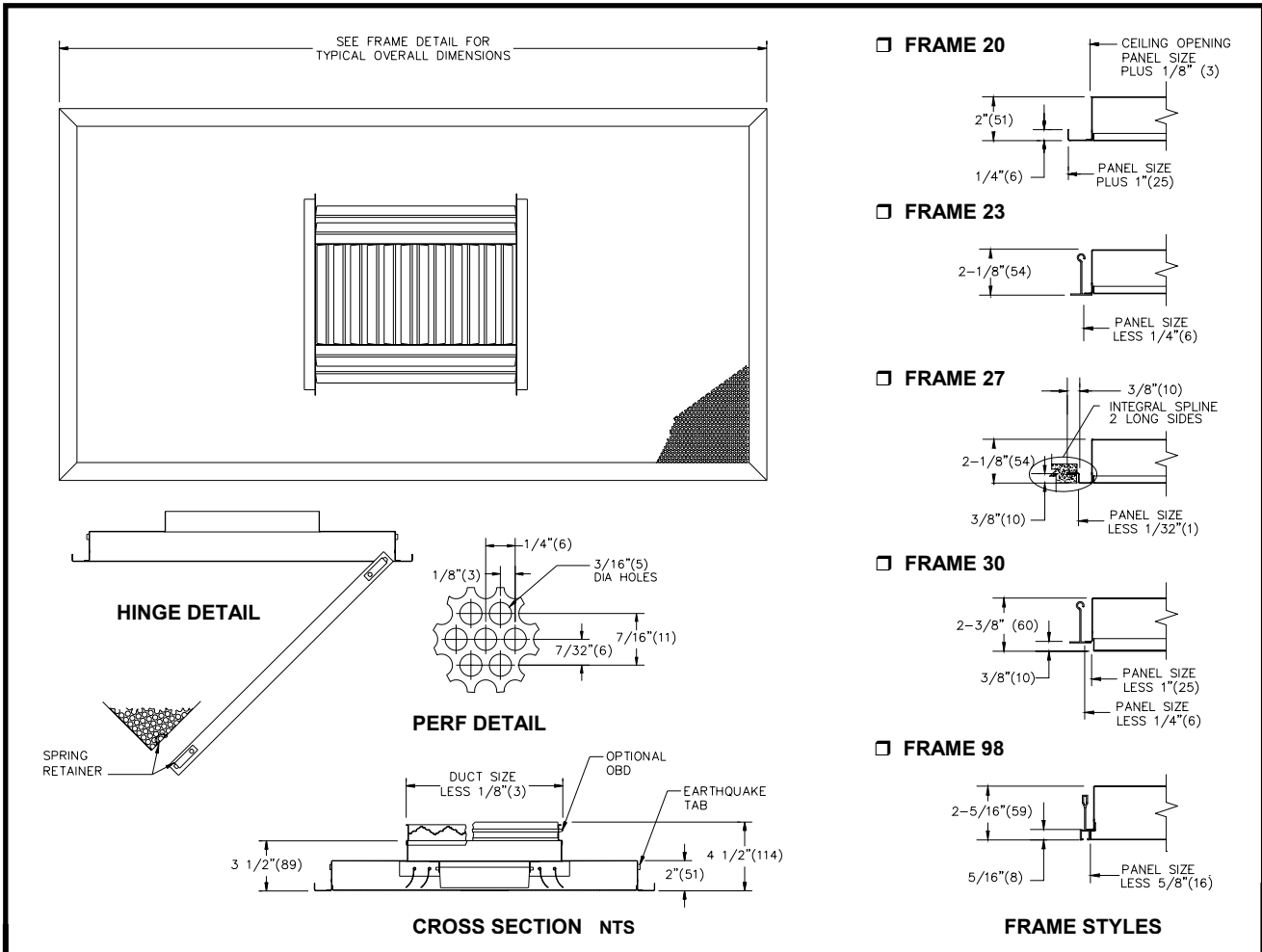
JOB NAME \_\_\_\_\_  
 ARCHITECT \_\_\_\_\_  
 ENGINEER \_\_\_\_\_  
 CONTRACTOR \_\_\_\_\_  
 LOCATION \_\_\_\_\_

**SUBMITTAL SHEET**  
 Form Number DS6005.2 Effective Date 4/03  
 Replaces Form DS6005.1



## 6200 / 56200 SERIES

### Perforated Diffuser, Square Neck & Adjustable Curved Blades



PANEL SIZES						
	12x12 (305x305)	16x16 (406x406)	20x20 (508x508)	24x24 (610x610)	24x12 (610x305)	48x24 (1219x610)
INLET SIZES AVAILABLE	6x6 (152x152)	6x6 (152x152)	6x6 (152x152)	SEE FORM DS6003 FOR ADDITIONAL SIZES AVAILABLE 16x16 (406x406) 18x18 (457x457)	6x6 (152x152)	6x6 (152x152)
		8x8 (203x203)	8x8 (203x203)			8x8 (203x203)
		10x10 (254x254)	10x10 (254x254)			10x10 (254x254)
			12x12 (305x305)			12x12 (305x305)
						14x14 (356x356)
						16x16 (406x406)
						18x18 (457x457)

DIMENSIONS ARE IN GIVEN AS INCHES (MM)

**NOTE :** 1. 6200 CONSTRUCTION IS ALL STEEL.      3. STANDARD FINISH IS BRITISH WHITE  
 2. 56200 CONSTRUCTION IS STEEL WITH ALUMINUM PERF.